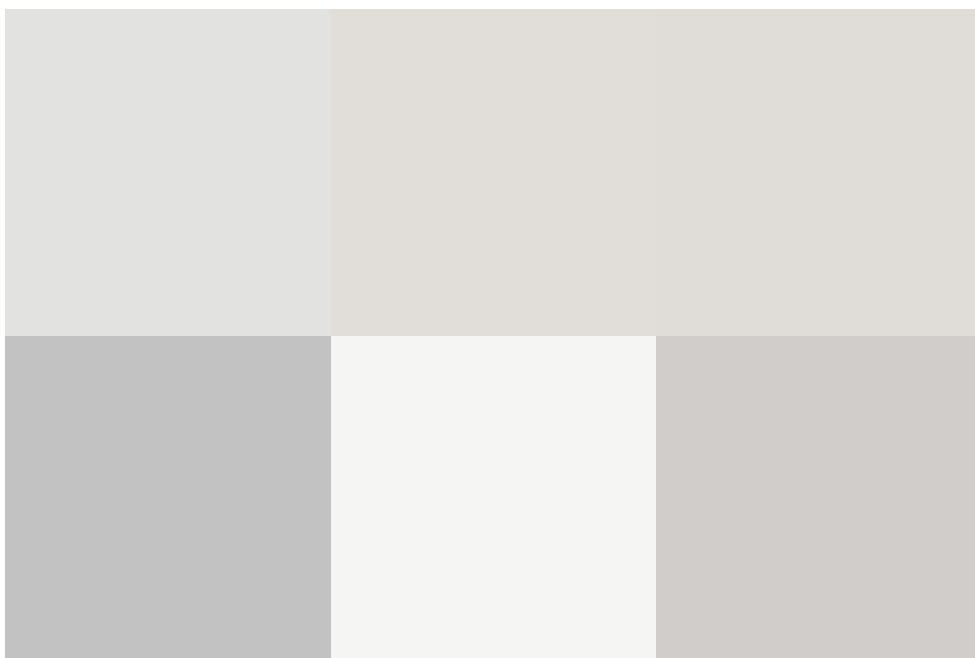
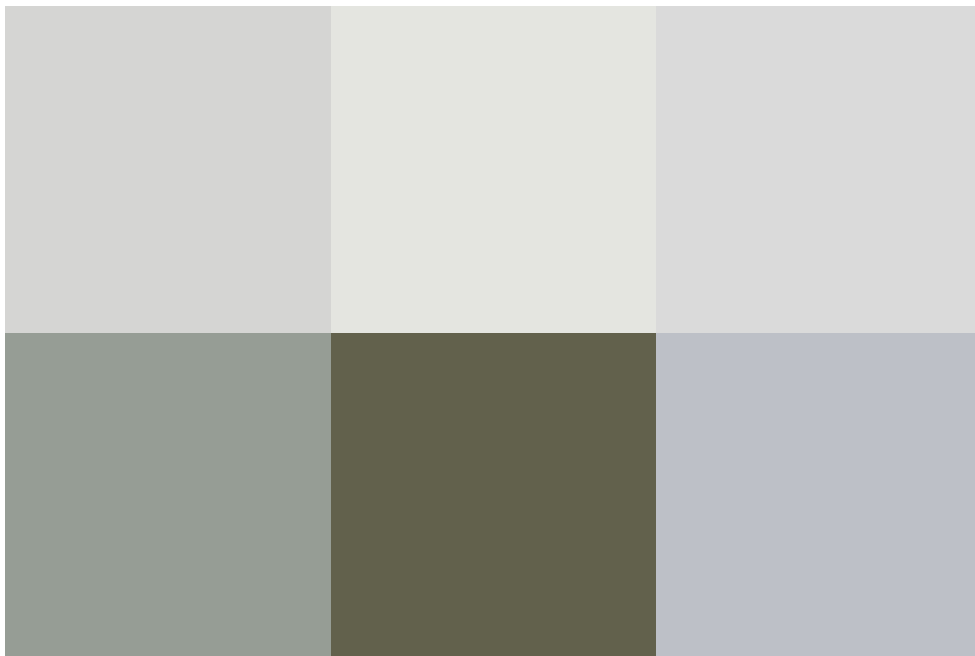


Abington Way, Queensfield, SN2 7SZ

guide price **£280,000**

0



freehold energy efficiency rating

D

GUIDE PRICE OF £280K-290K

TWO BEDROOM BUNGALOW WHICH HAS BEEN UPDATED BY THE CURRENT OWNERS ALLOWING A LARGER KITCHEN SPACE WITH UTILITY SPACE.

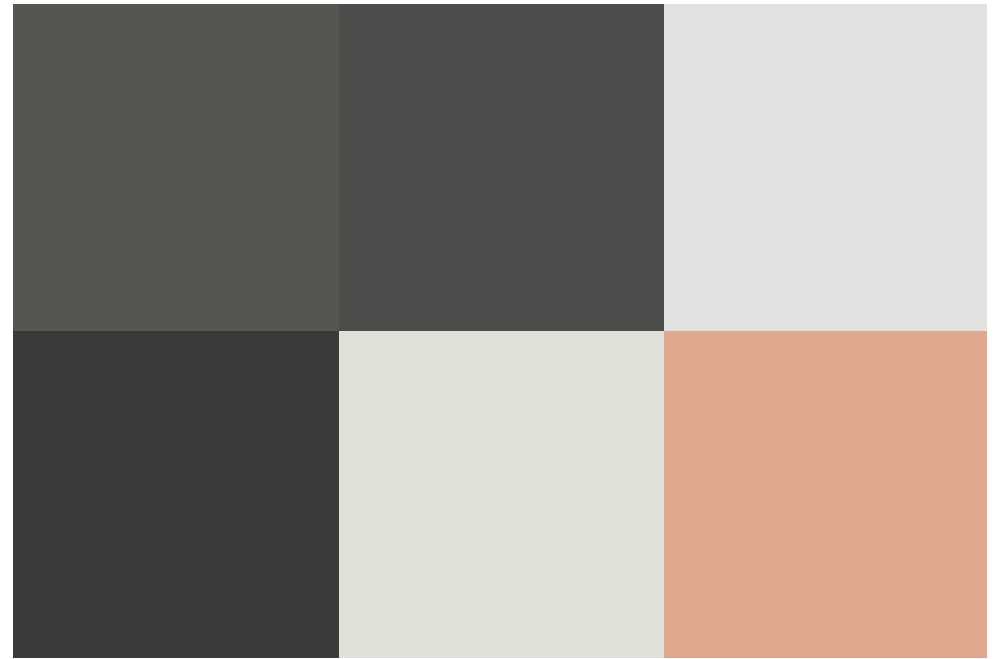
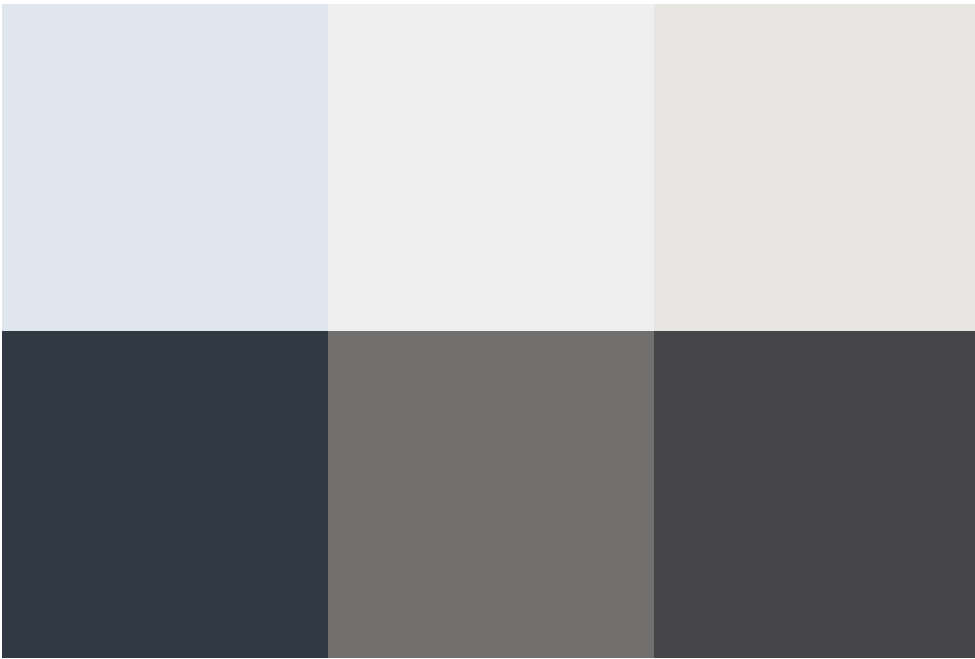
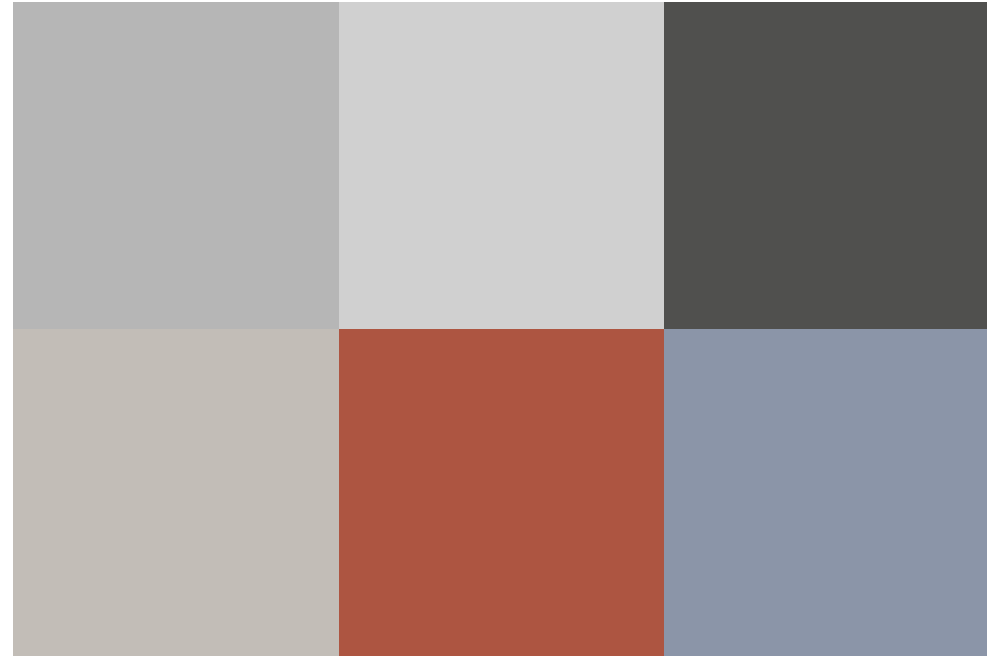
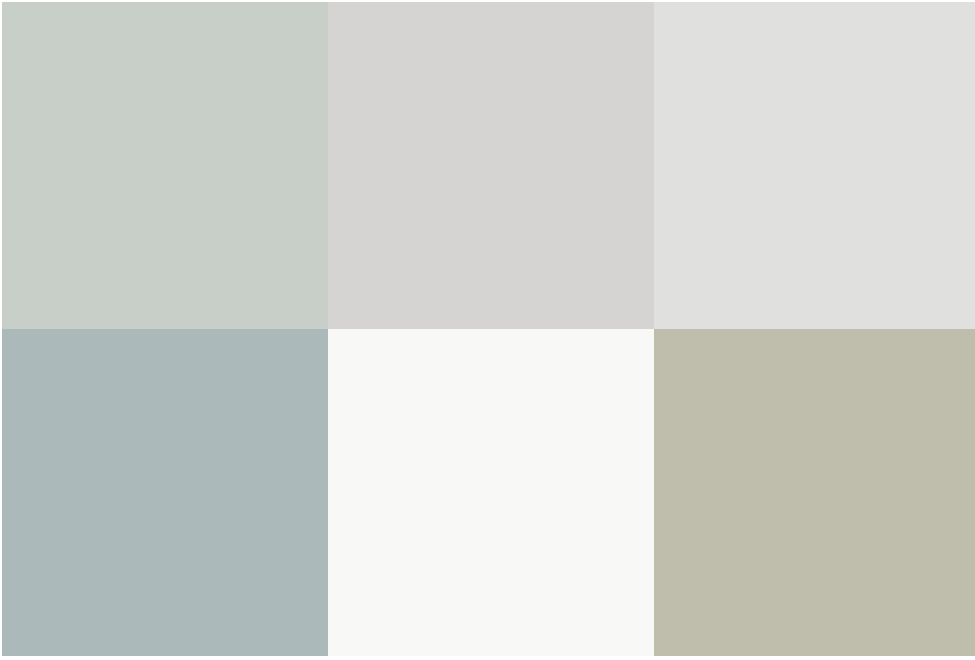
The property is placed on a quiet street in upper Stratton providing plenty of parking, easy access to transport links and ready to move straight into.

There are two bedrooms, a modern bathroom with tiles, large kitchen area with double doors into the garden and space for dining as well as a large lounge to the front.

Externally you have parking on the driveway as well as a garden to the rear which is low maintenance.

This home is being sold with NO ONWARD CHAIN.

we highly recommend a viewing.



exceptional service

Our team will guide you through the process of buying or selling your home.

We have a team of dedicated sales progressors in place to ensure your purchase or sale runs smoothly through to completion, keeping you in the loop and a close eye on your chain while moving you in as swiftly and smoothly as possible.

- Honest valuations in current market conditions
- Dedicated sales progression team
- Recommended financial advisors
- 5* service from valuation to completion
- Award winning lettings service
- Ahead of the game marketing strategies
- Professional photography
- Social media marketing
- Top listings on Rightmove and Zoopla

call us for a free
valuation on your
property

eastswindon@richardjames.uk

Grange Drive | Stratton | SN3 4LA

Richard James & their clients give notice that:

1. These sales and particulars do not constitute any part of an offer of contract, and are for the guidance of prospective purchasers only and should not be relied on as statements of fact.
2. No representations are made in these particulars as to the condition of the property or as to whether any service or facilities are in good working order.
3. All Measurements are approximate.

