



Piernik Close, Haydon End, SN25 1AS

guide price **£220,000-£230,000**

**richard
james**



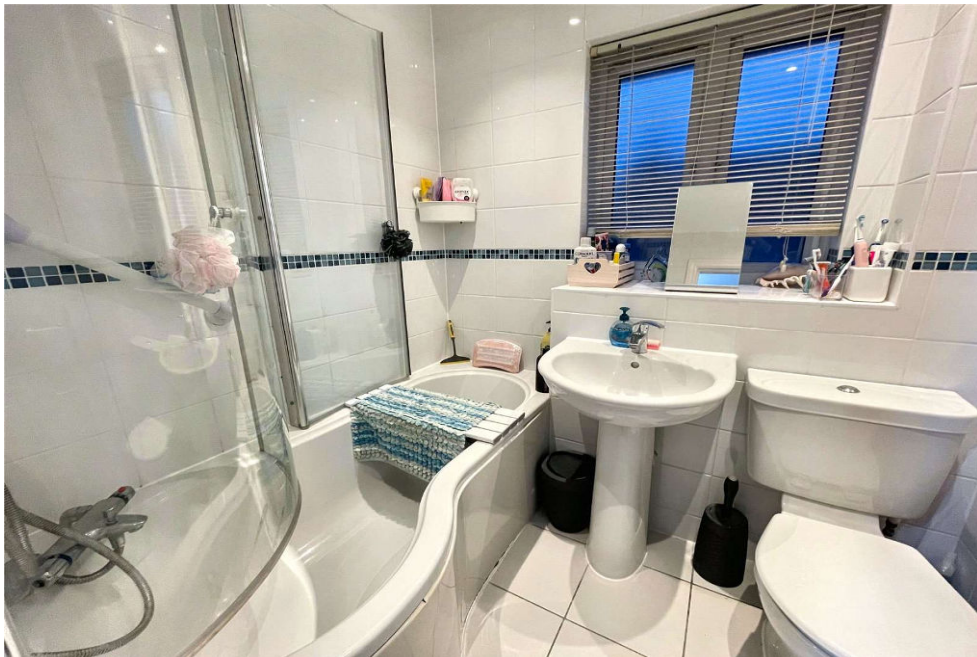
freehold energy efficiency rating

A very well presented terraced home, occupying a quiet position with lovely outlook and situated within the popular Haydon End area of North Swindon. Ideally located just a short walk from the Northern Orbital Centre, with its many amenities and bus routes into the Town Centre and surrounding area.

The property comprises: Storm Porch, Hall, Cloakroom, fitted Kitchen and Sitting Room, with PVCu double glazed doors opening into the low maintenance, landscaped Rear Garden. With the Two generous Bedrooms and Family Bathroom, with white three piece suite to the first floor.

Further features include the pleasant enclosed Rear Garden, allocated Parking Space to rear, PVCu Double Glazing and Gas Radiator Heating.

Viewing recommended by the vendors Sole Agents, Richard James.



exceptional service

Our team will guide you through the process of buying or selling your home.

We have a team of dedicated sales progressors in place to ensure your purchase or sale runs smoothly through to completion, keeping you in the loop and a close eye on your chain while moving you in as swiftly and smoothly as possible.

- Honest valuations in current market conditions
- Dedicated sales progression team
- Recommended financial advisors
- 5* service from valuation to completion
- Award winning lettings service
- Ahead of the game marketing strategies
- Professional photography
- Social media marketing
- Top listings on Rightmove and Zoopla

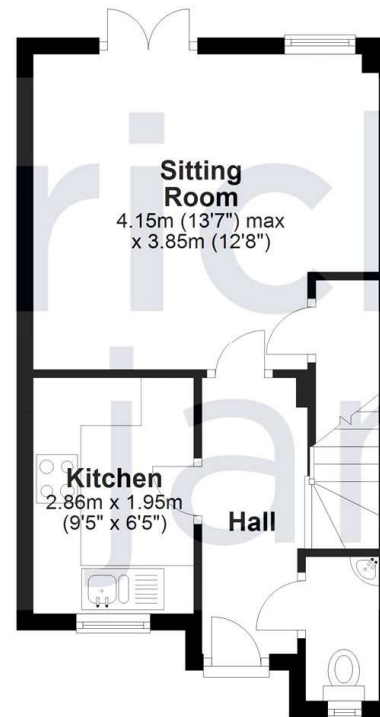
call us for a free
valuation on your
property

northswindon@richardjames.uk

Gemini House | Hargreaves Road | SN25 5AZ

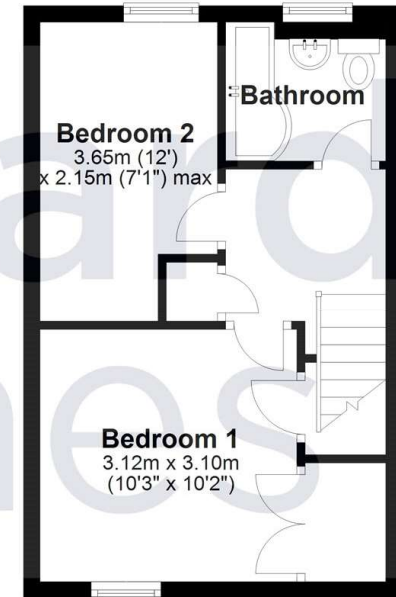
Ground Floor

Approx. 30.0 sq. metres (323.3 sq. feet)



First Floor

Approx. 28.7 sq. metres (309.2 sq. feet)



Total area: approx. 58.8 sq. metres (632.6 sq. feet)

Richard James & their clients give notice that:

1. These sales and particulars do not constitute any part of an offer of contract, and are for the guidance of prospective purchasers only and should not be relied on as statements of fact.
2. No representations are made in these particulars as to the condition of the property or as to whether any service or facilities are in good working order.
3. All Measurements are approximate.

rightmove 