



Gaveller Road, Redhouse, SN25 2DG

asking price **£360,000**

**richard  
james**



- COMPLETE CHAIN
- THREE BEDROOMS
- DETACHED
- EN SUITE TO MASTER
- CONSERVATORY
- GARAGE AND DRIVEWAY

This three bedroom detached home can be found tucked into a quiet area in Redhouse, North Swindon within walking distance to ample amenities such as shops and schools as well as being a short distance from the ever-popular Orbital retail park.

The property comprises; entrance hall, WC, kitchen diner, spacious living room and generous conservatory room with access into the tidy side garden. Upstairs you'll find the bedrooms and the family bathroom, with the master bedroom boasting a large en suite with double shower. The side garden is laid to patio and lawn, with access into the garage at the rear as well as parking in front with gated access.

Get in touch for your chance to view this amazing home!

EPC: TBC  
Council Tax: D









## exceptional service

Our team will guide you through the process of buying or selling your home.

We have a team of dedicated sales progressors in place to ensure your purchase or sale runs smoothly through to completion, keeping you in the loop and a close eye on your chain while moving you in as swiftly and smoothly as possible.

- Honest valuations in current market conditions
- Dedicated sales progression team
- Recommended financial advisors
- 5\* service from valuation to completion
- Award winning lettings service
- Ahead of the game marketing strategies
- Professional photography
- Social media marketing
- Top listings on Rightmove and Zoopla

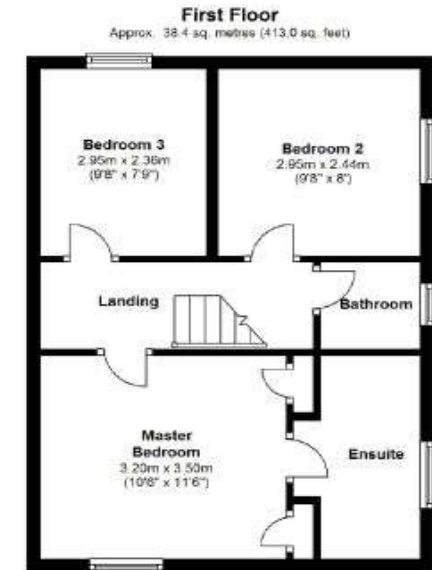
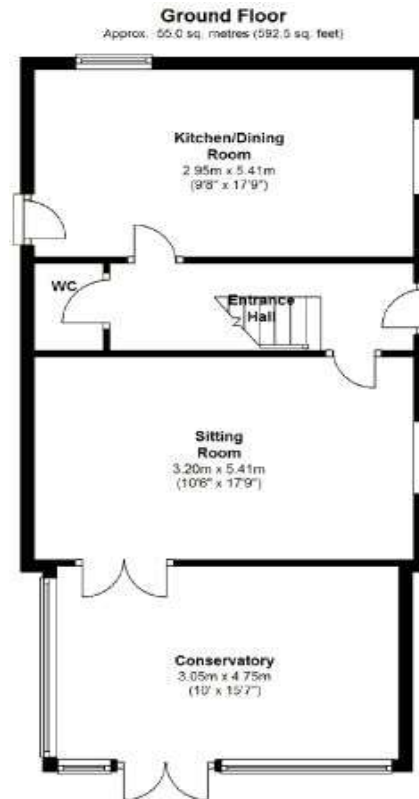
---

call us for a free  
valuation on your property

---

[northswindon@richardjames.uk](mailto:northswindon@richardjames.uk)

Gemini House | Hargreaves Road | SN25 5AZ



Total area: approx. 93.4 sq. metres (1005.5 sq. feet)

### Richard James & their clients give notice that:

1. These sales and particulars do not constitute any part of an offer of contract, and are for the guidance of prospective purchasers only and should not be relied on as statements of fact.
2. No representations are made in these particulars as to the condition of the property or as to whether any service or facilities are in good working order.
3. All Measurements are approximate.

rightmove 