

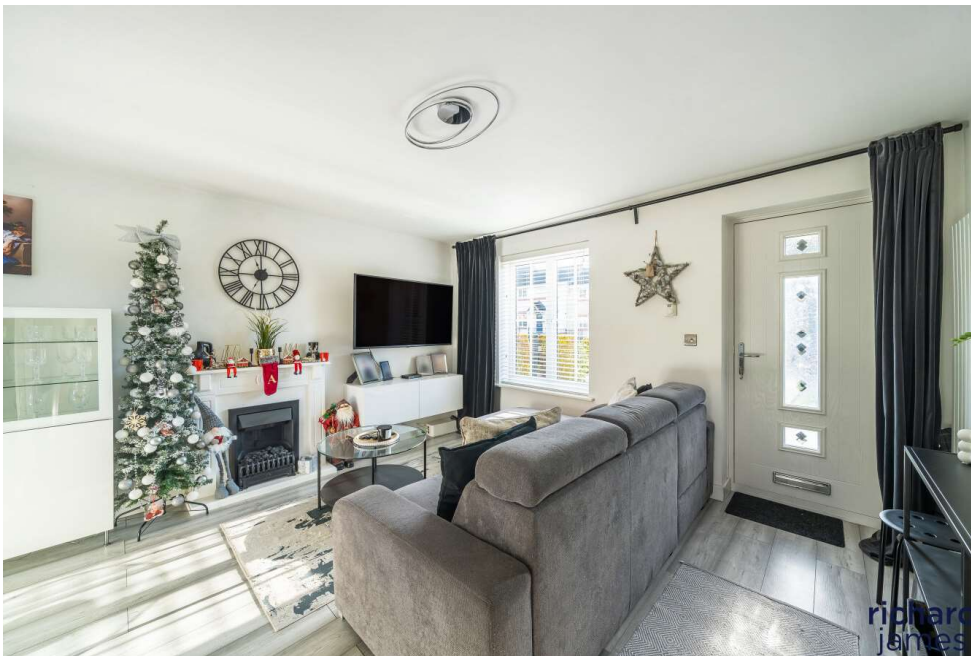


Gable Close, Abbey Meads, SN25 4XG

asking price **£250,000**

**richard  
james**





- VERY WELL PRESENTED - TWO DOUBLE BEDROOMS - REFURBISHED BATHROOM SUITE - GARAGE AND OFF-STREET PARKING -

Nestled in the highly sought-after and tranquil Gable Close, this beautifully presented two-bedroom terraced property offers modern living in a peaceful setting.

On the ground floor, you'll find a stylishly decorated living room, perfect for relaxing or entertaining. This flows seamlessly into the bright kitchen and dining area, which offers a contemporary layout with convenient access to a WC and the beautifully landscaped rear garden.

Upstairs, the property boasts two generously sized double bedrooms and a stunning three-piece bathroom suite, designed to a high standard.

The rear garden is a true highlight, providing a serene outdoor space ideal for relaxing or entertaining. A gate leads directly to your allocated parking space and garage, adding to the convenience of this wonderful home.

Located in the desirable Abbey Meads area, this property combines modern comforts with a quiet and welcoming community. Don't miss the chance to make this house your home!

Council Tax Band - C  
EPC Rating - TBC



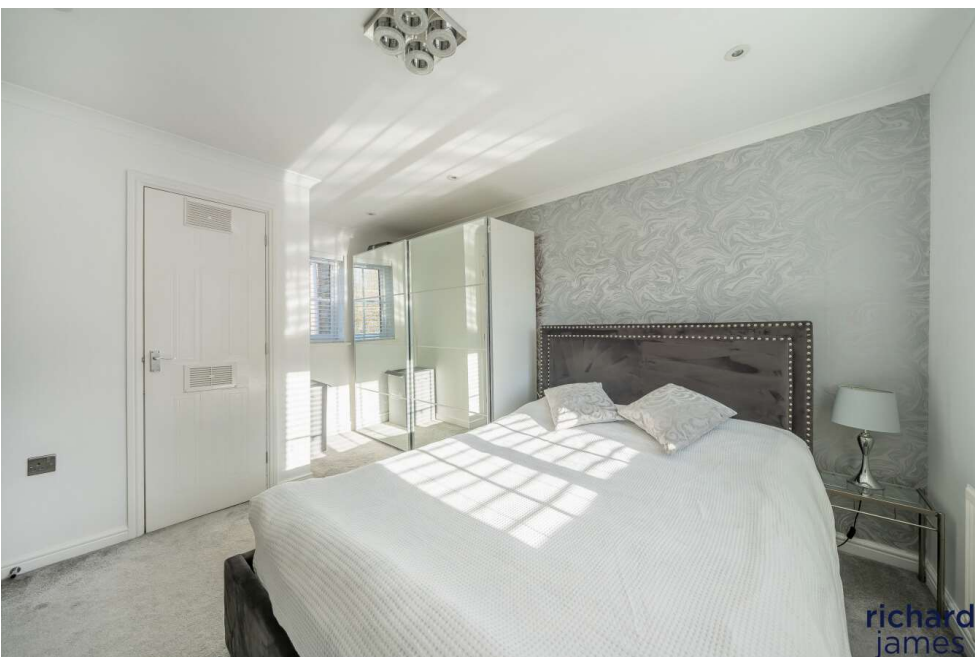
richard  
james



richard  
james



richard  
james



richard  
james





richard  
james



richard  
james





## exceptional service

Our team will guide you through the process of buying or selling your home.

We have a team of dedicated sales progressors in place to ensure your purchase or sale runs smoothly through to completion, keeping you in the loop and a close eye on your chain while moving you in as swiftly and smoothly as possible.

- Honest valuations in current market conditions
- Dedicated sales progression team
- Recommended financial advisors
- 5\* service from valuation to completion
- Award winning lettings service
- Ahead of the game marketing strategies
- Professional photography
- Social media marketing
- Top listings on Rightmove and Zoopla

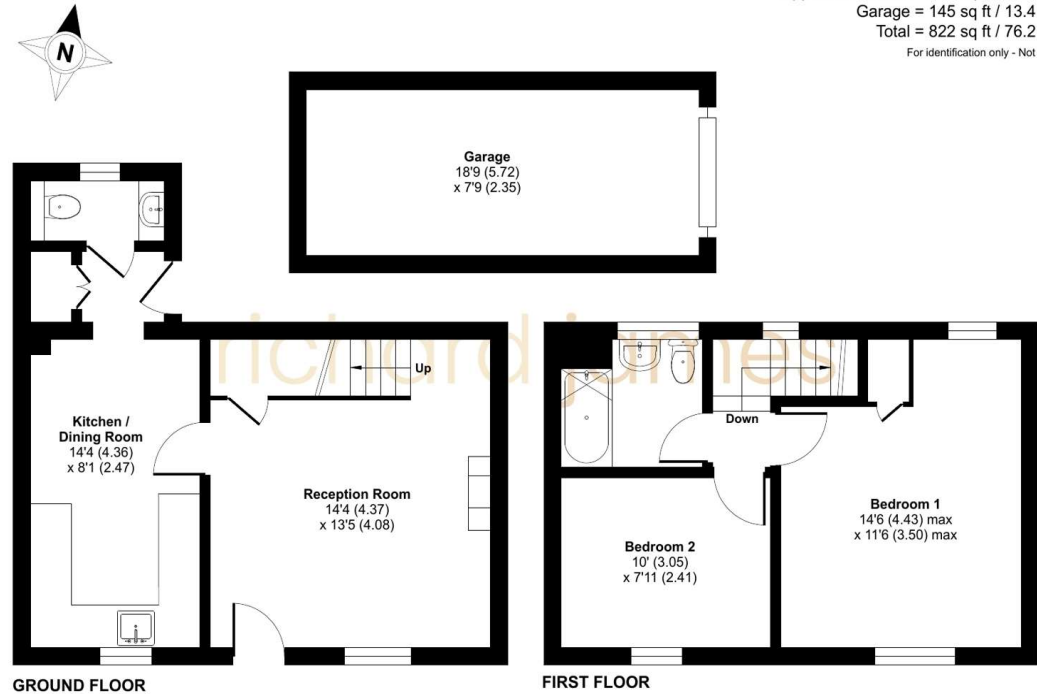
---

call us for a free  
valuation on your property

---

[northswindon@richardjames.uk](mailto:northswindon@richardjames.uk)

Gemini House | Hargreaves Road | SN25 5AZ



 Floor plan produced in accordance with RICS Property Measurement 2nd Edition, Incorporating International Property Measurement Standards (IPMS2 Residential). © nichecom 2024. Produced for Richard James Estate Agents Ltd. REF: 1219506

### Richard James & their clients give notice that:

1. These sales and particulars do not constitute any part of an offer of contract, and are for the guidance of prospective purchasers only and should not be relied on as statements of fact.
2. No representations are made in these particulars as to the condition of the property or as to whether any service or facilities are in good working order.
3. All Measurements are approximate.

rightmove 