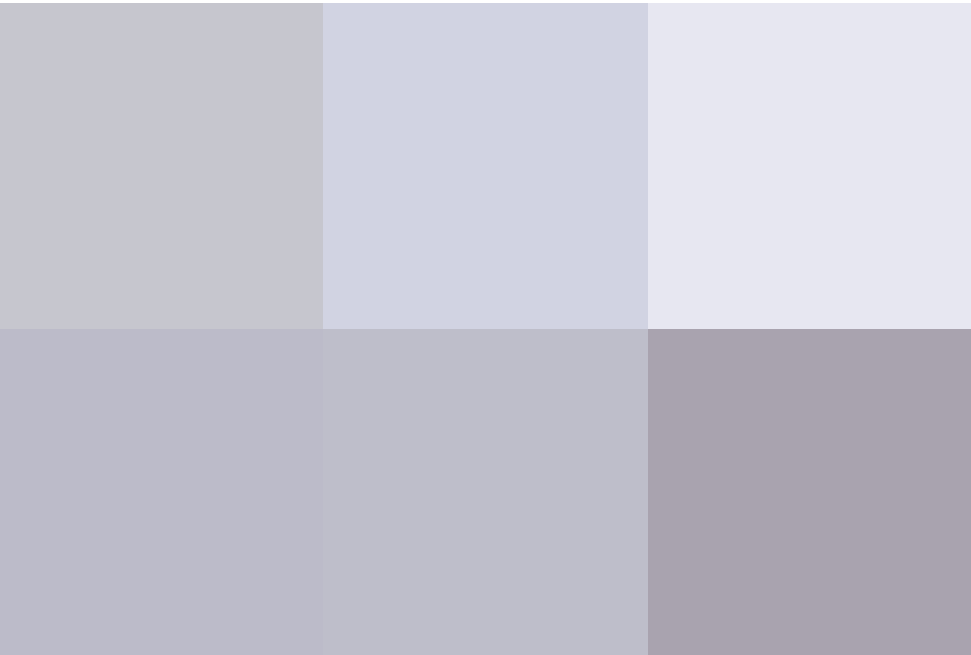
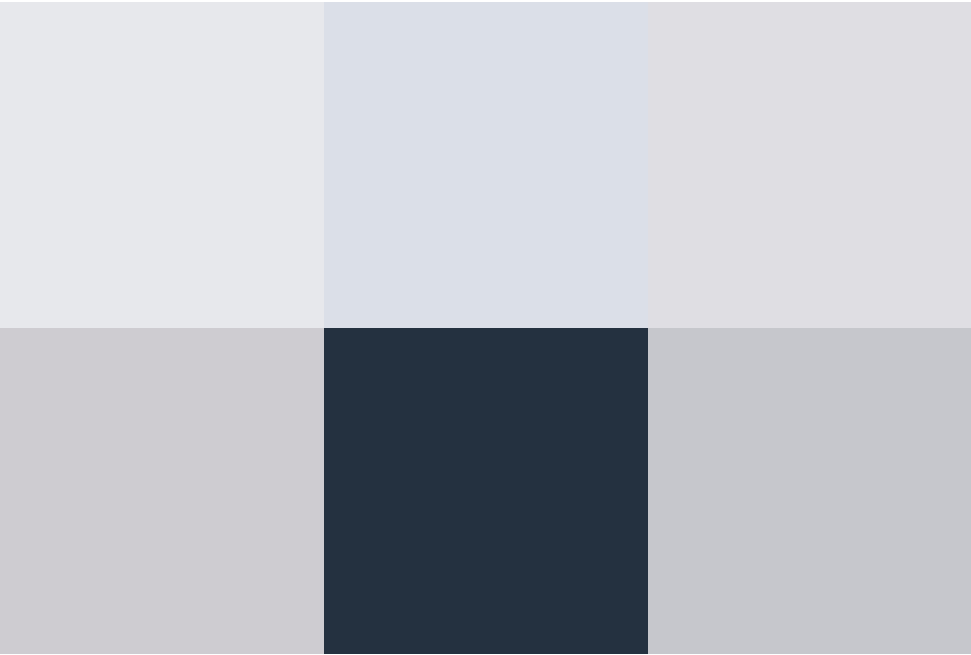


Phoenix Gardens, Oakhurst, SN25 2LQ

guide price **£325,000 - £350,000**



 4  2  2

****GUIDE PRICE £325,000 - £350,000****

Tucked away in the heart of Oakhurst, North Swindon sits this substantial, beautifully presented family home. Boasting a kitchen diner, impressive master suite and a landscaped rear garden this home has a lot to offer!

On entry to the home, downstairs you are greeted with the lounge and kitchen diner. Both have been tastefully modernised and maintained by the current owners.

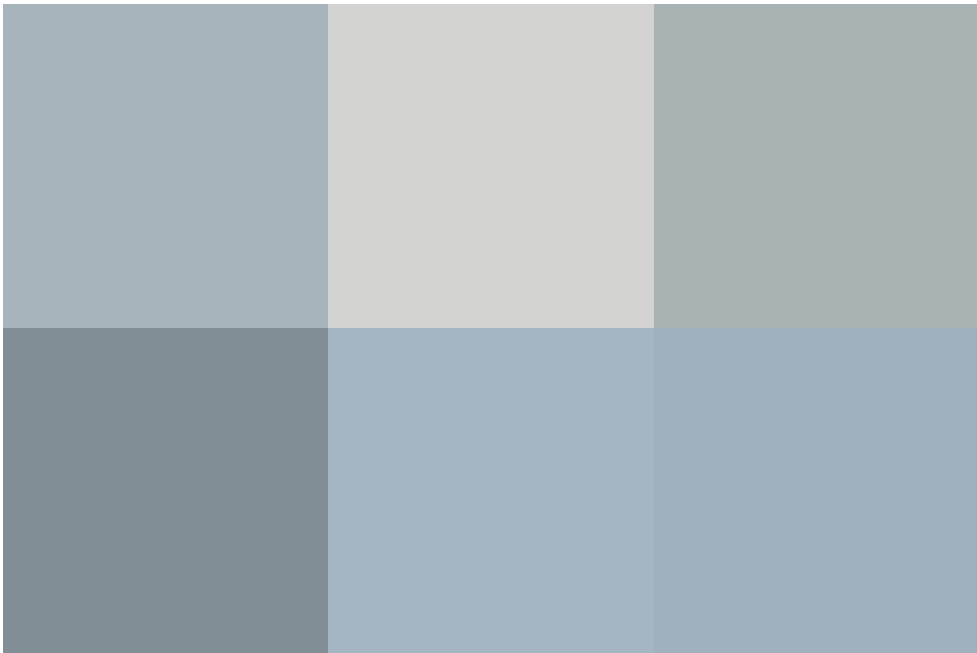
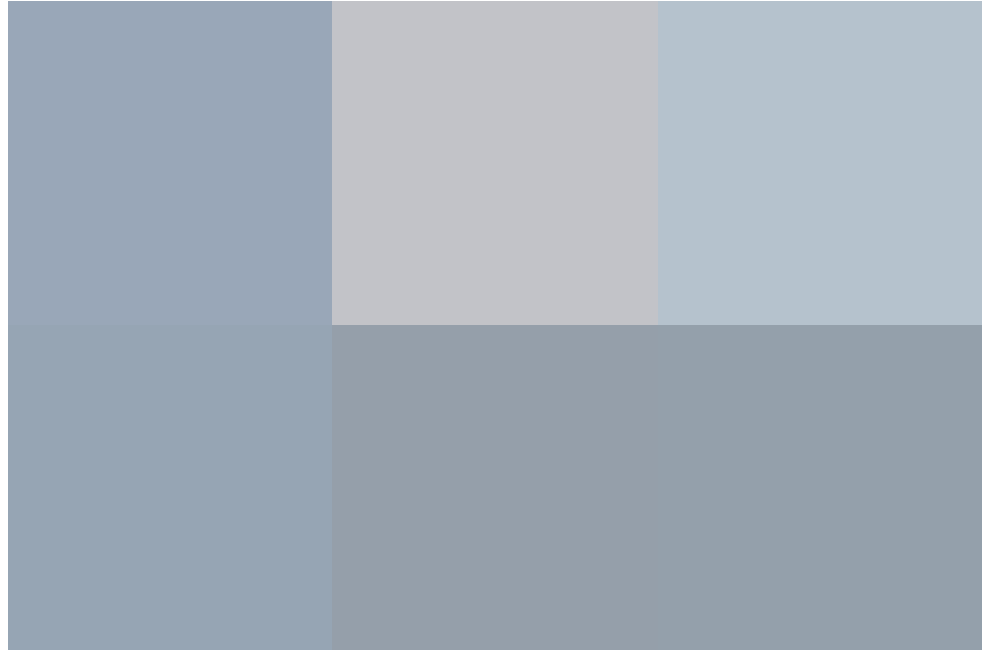
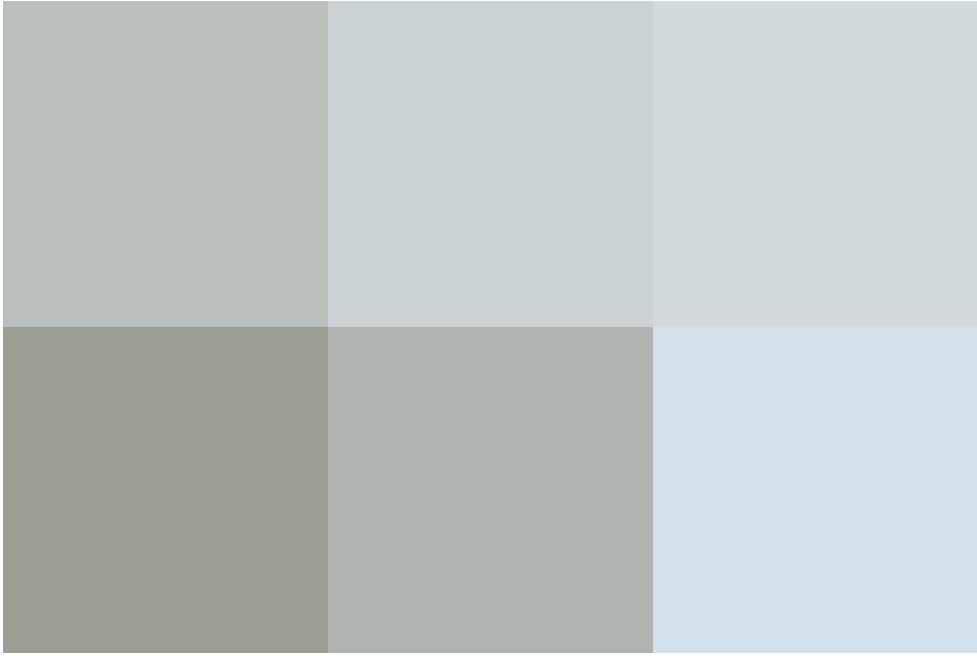
To the first floor you'll find the family bathroom as well as three generous bedrooms.

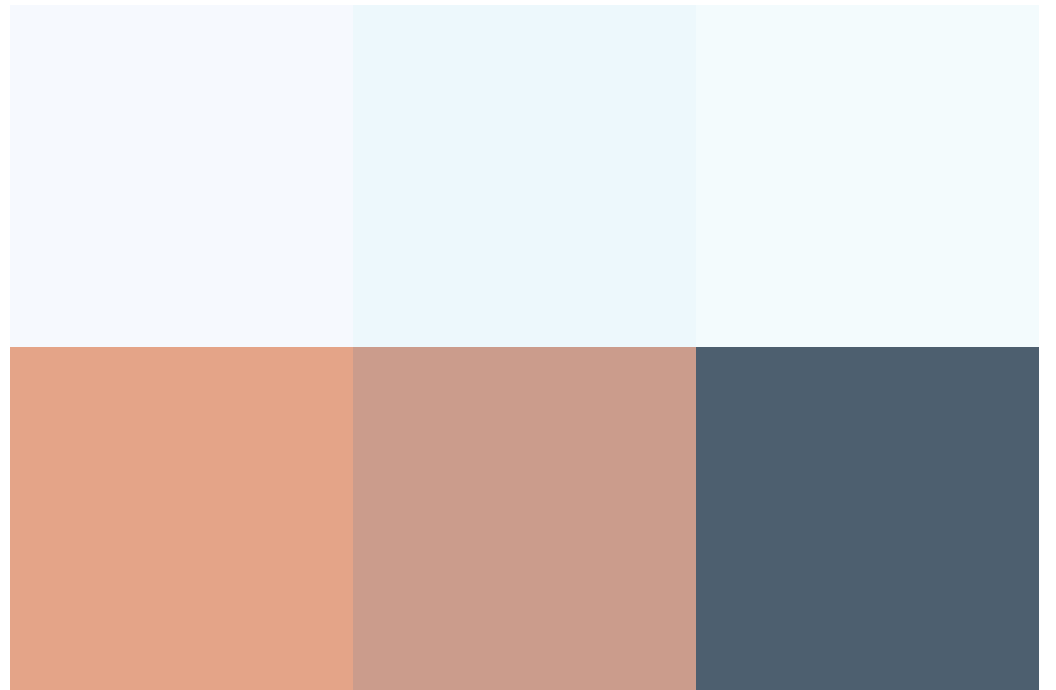
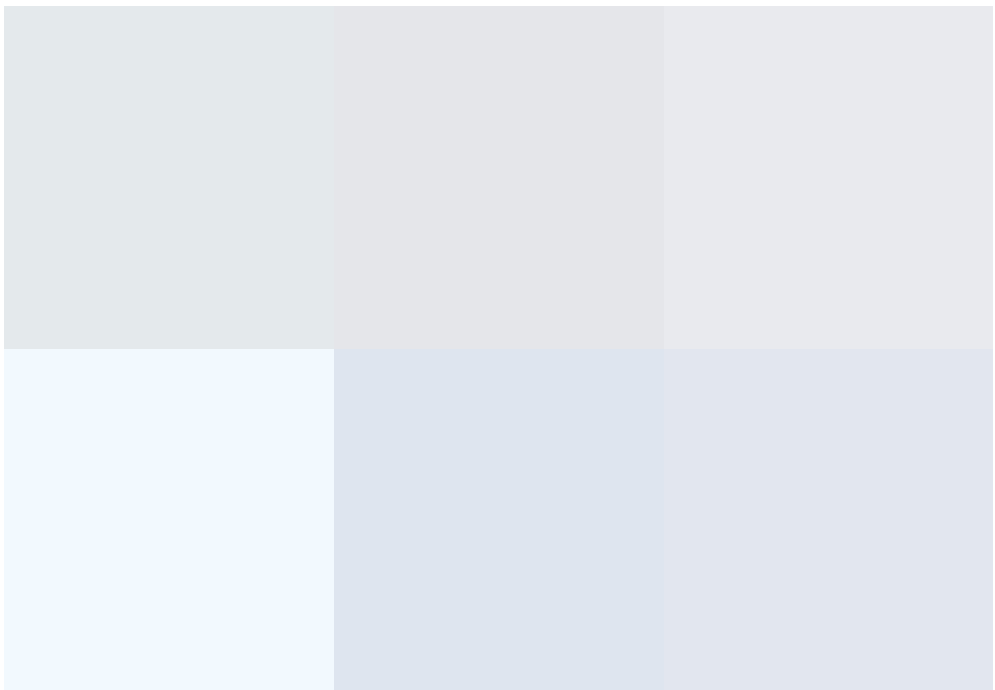
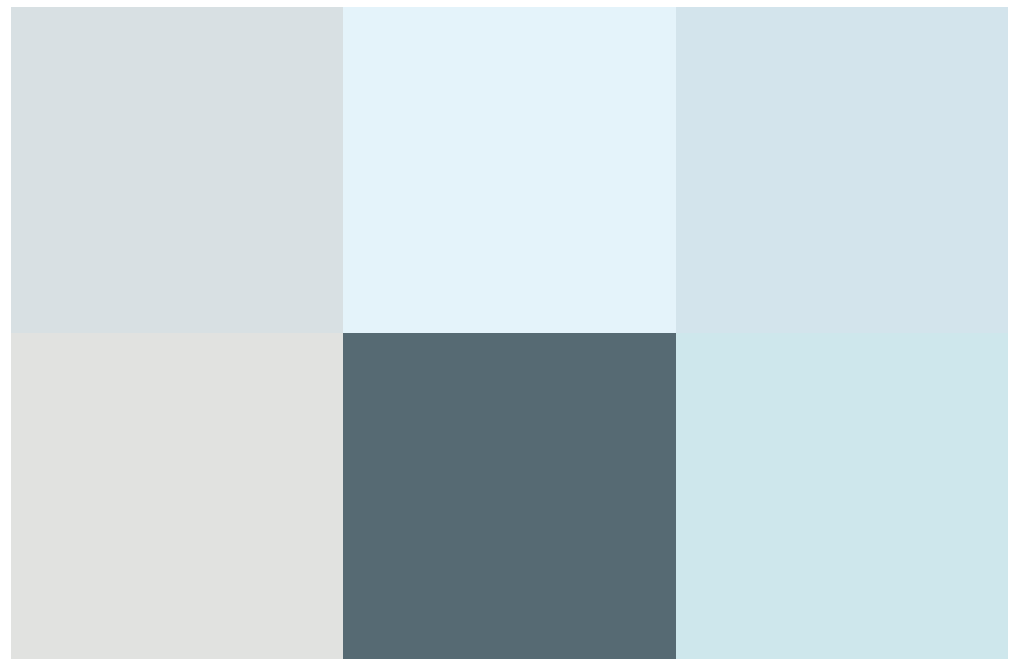
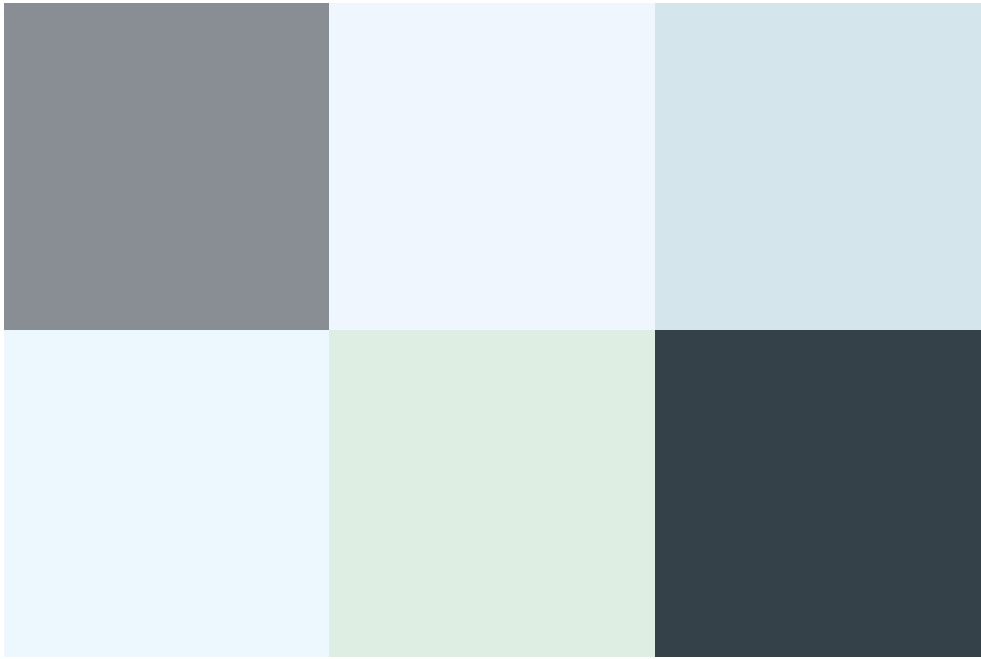
Spanning over the second floor you'll find the master suite complete with dressing area, built in wardrobes and spacious en-suite shower room. Externally the rear garden has been landscaped to a high standard and there is ample allocated parking along with a single garage.

Call now to arrange your viewing!

EPC Rating - C

Council Tax Band - E





call us for a free
valuation on your property

northswindon@richardjames.uk

Gemini House | Hargreaves Road | SN25 5AZ