



Swan Hill
Shirvenham



Swan Hill

Shrivenham

****10 BRAND NEW VILLAGE HOMES ****

PARS Developments - Townsend Road is a stunning development situated in the village of Shrivenham. Surrounded by countryside this new development consists of an attractive collection of two and three bedroom homes that have been thoughtfully designed for first time buyers, professional couples and families.



These brand new home offers the perfect blend of modern living and tranquility, with exceptional views over the local countryside.

These thoughtfully designed three-bedroom home features elegant interiors, high-quality finishes, and spacious layouts ideal for families and entertaining alike.

Swan Hill

Shrivenham

****10 BRAND NEW VILLAGE HOMES ****

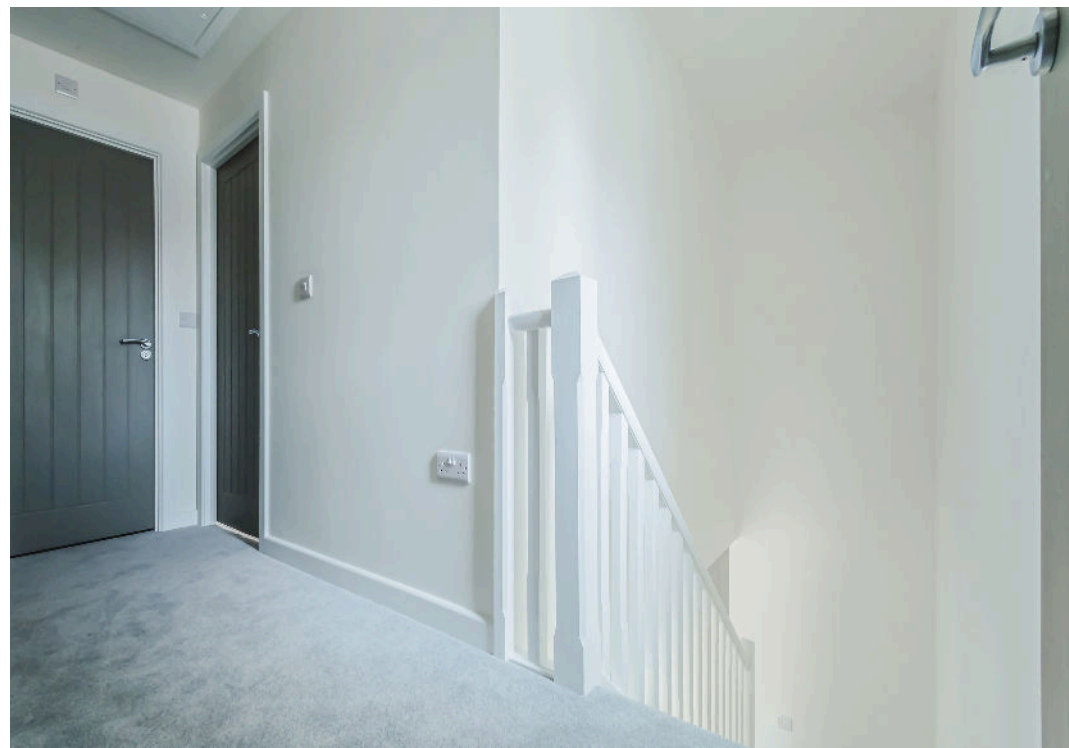
There are a vast number of local amenities just a short walking distance away, including the village shop, the village hall, local pubs, Bloomfields delicatessen, a doctors surgery & chemist and the local Shrivenham C of E primary school.

This location also boasts excellent travel links via the Swindon Railway Station and the M4, A419 and A420. With access to London Paddington achievable in just 55 minutes via train and the Cotswolds just on the doorstep.

Shrivenham is a village and civil parish in the Vale of White Horse, Oxfordshire, England, about 5 miles south-west of Faringdon. The village is close to the county boundary with Wiltshire and about 7 miles north east of Swindon.

Call Richard James Land and New Homes team for more details.







Richard James & their clients give notice that:

1. These sales and particulars do not constitute any part of an offer of contract, and are for the guidance of prospective purchasers only and should not be relied on as statements of fact.
2. No representations are made in these particulars as to the condition of the property or as to whether any service or facilities are in good working order.
3. All Measurements are approximate.

Exceptional Service

Our team will guide you through the process of buying or selling your home.

We have a team of dedicated sales progressors in place to ensure your purchase or sale runs smoothly through to completion, keeping you in the loop and a close eye on your chain, while moving you in as swiftly and smoothly as possible.

- Honest valuations in current marketing conditions
- Dedicated sales progression team
- Recommended financial advisors
- 5* service from valuation to completion
- Award winning lettings service
- Ahead of the game marketing strategies
- Professional photography
- Social Media marketing
- Top listings on Rightmove, Zoopla and Boomin

Richard James Land and New Homes

01793 688 705

newhomes@richardjames.uk

Gemini House | Hargreaves Road | Swindon | SN25 5AZ

richard james

Land and New Homes