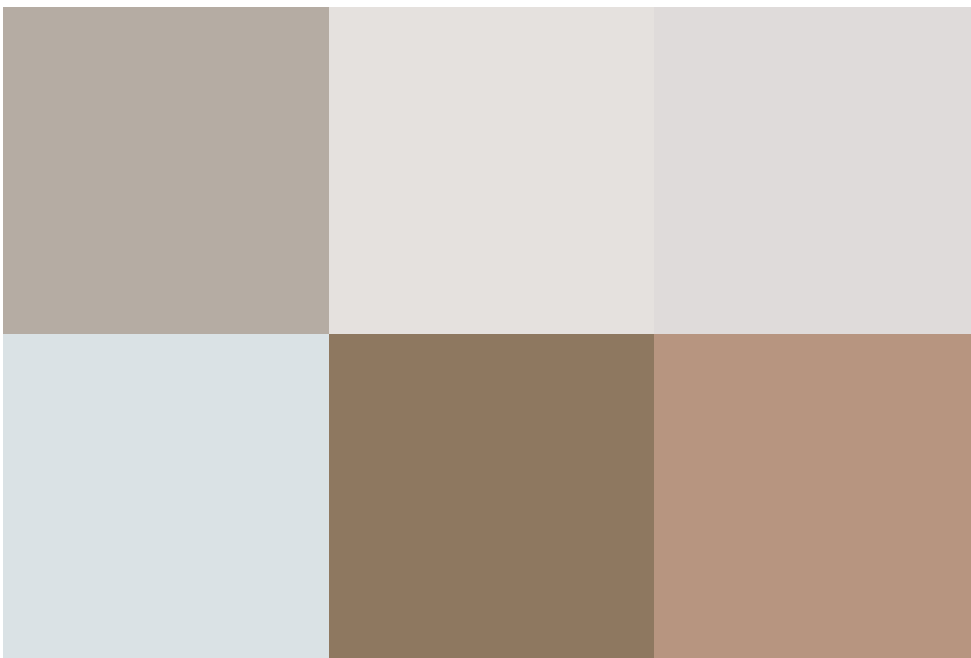
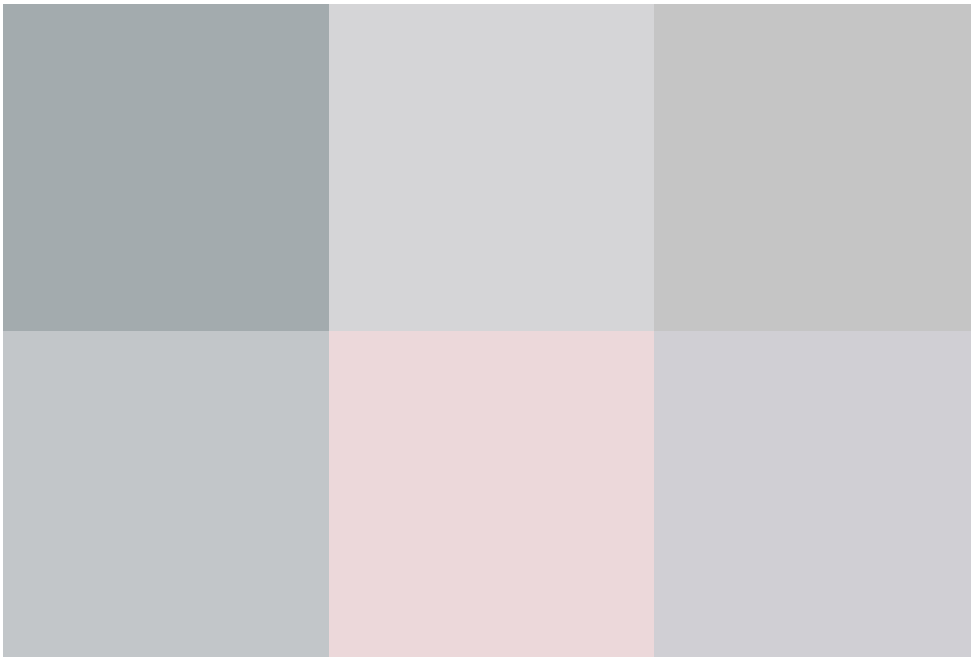


Godwin Road, Stratone Village, SN3 4XT

asking price **£315,000**



 3  1  1

THIS A BEAUTIFUL THREE BEDROOM DETACHED HOME IN STRATONE VILLAGE WHICH IS BEING SOLD WITH NO ONWARD CHAIN.

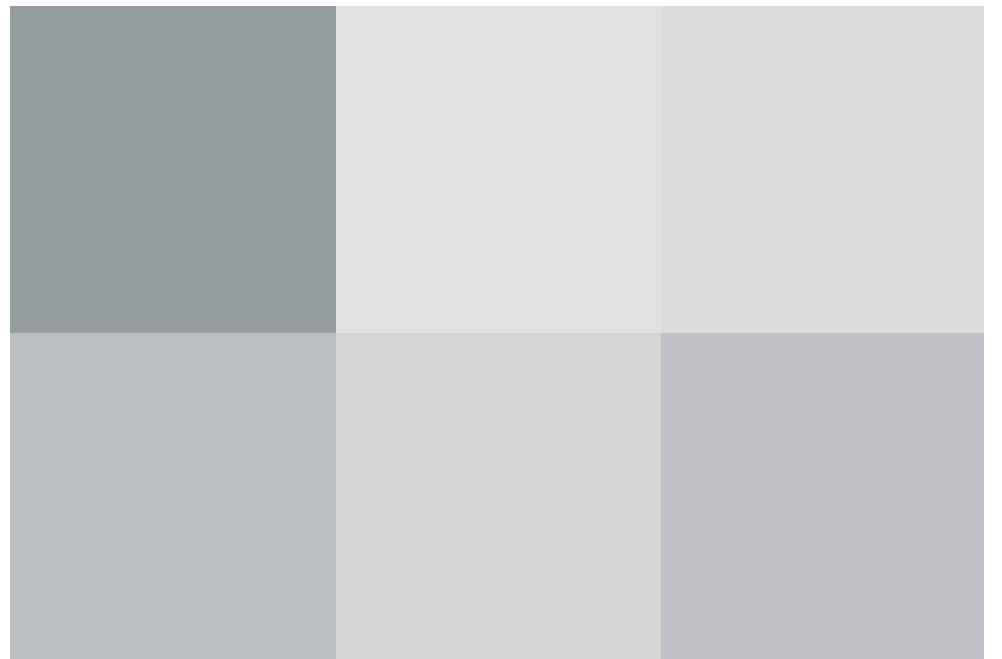
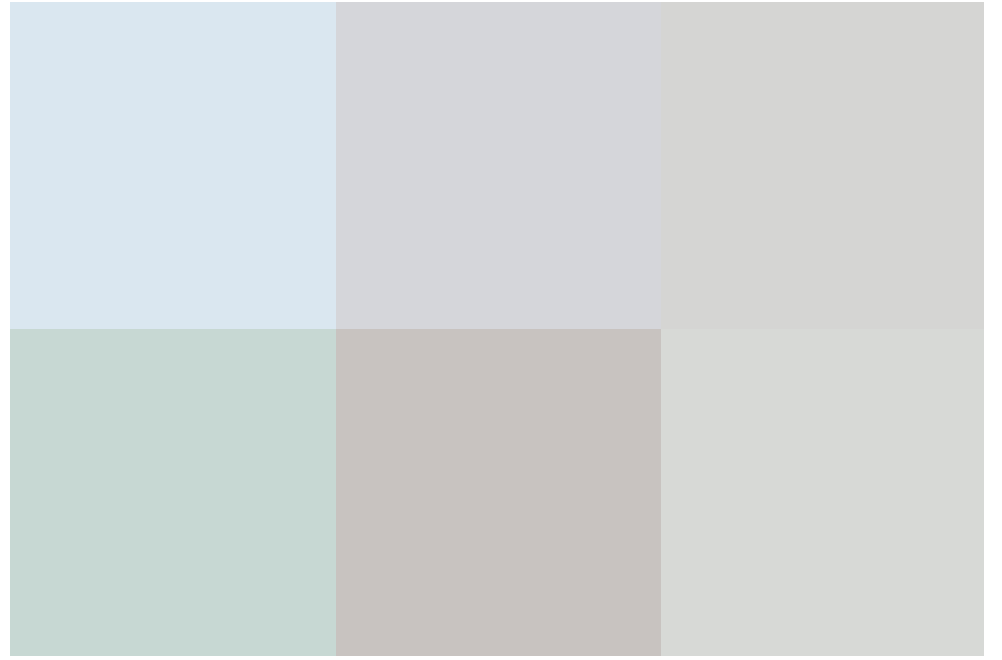
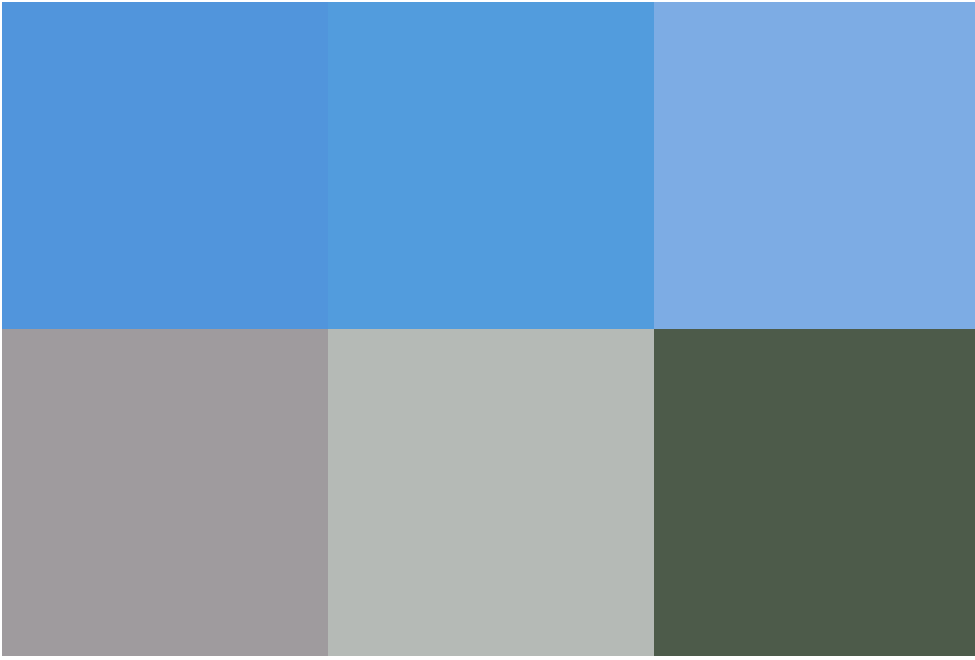
- DETACHED
- GARAGE
- IMMACULATELY PRESENTED
- GREAT SIZE REAR GARDEN
- STRATTON
- NO ONWARD CHAIN

The property has an entrance hall, large lounge to the front which leads into the kitchen diner. The conservatory is just off the kitchen and provides a peaceful sanctuary to enjoy the views of the garden.

Upstairs you will find three bedrooms and a modern shower room.

Located in Stratone Village this property would be perfect for families with schools just a short stroll away and local play parks nearby. This home has been presented to a high standard throughout but requires some modernising in places.

Externally the home has a large rear garden, garage and driveway to the front.



exceptional service

Our team will guide you through the process of buying or selling your home.

We have a team of dedicated sales progressors in place to ensure your purchase or sale runs smoothly through to completion, keeping you in the loop and a close eye on your chain while moving you in as swiftly and smoothly as possible.

- Honest valuations in current market conditions
- Dedicated sales progression team
- Recommended financial advisors
- 5* service from valuation to completion
- Award winning lettings service
- Ahead of the game marketing strategies
- Professional photography
- Social media marketing
- Top listings on Rightmove and Zoopla

call us for a free
valuation on your
property

eastswindon@richardjames.uk

Grange Drive | Stratton | SN3 4LA

Richard James & their clients give notice that:

1. These sales and particulars do not constitute any part of an offer of contract, and are for the guidance of prospective purchasers only and should not be relied on as statements of fact.
2. No representations are made in these particulars as to the condition of the property or as to whether any service or facilities are in good working order.
3. All Measurements are approximate.

