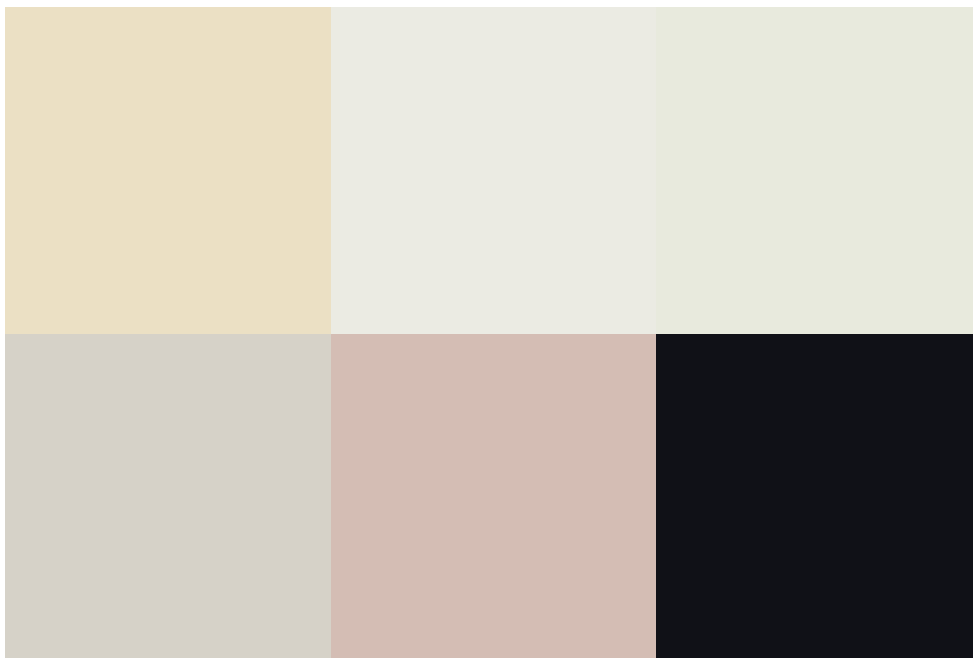
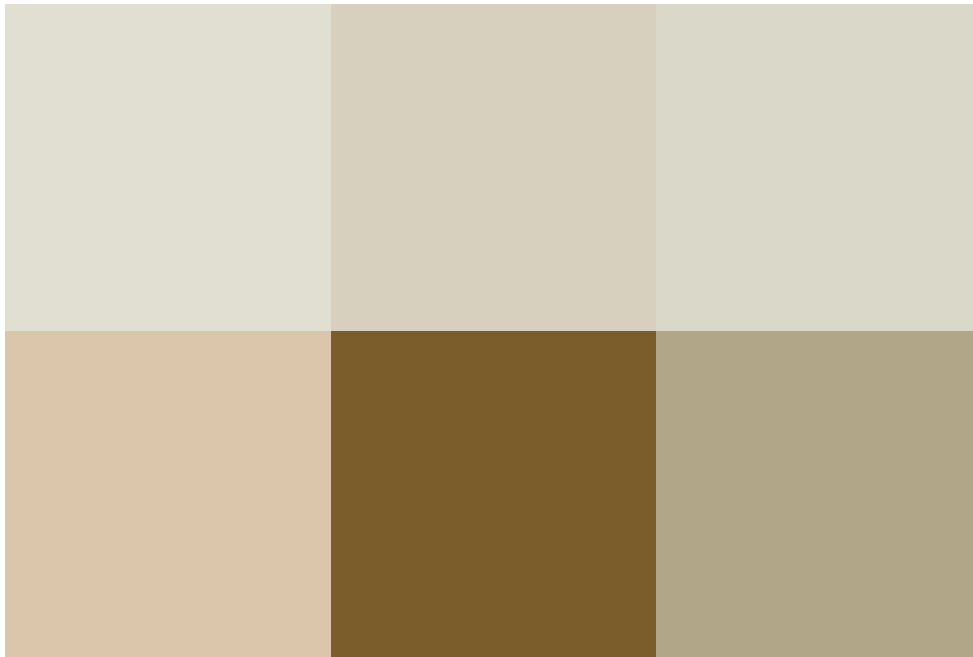


Robinscroft, Swindon, SN25 2TH

asking price **£315,000**

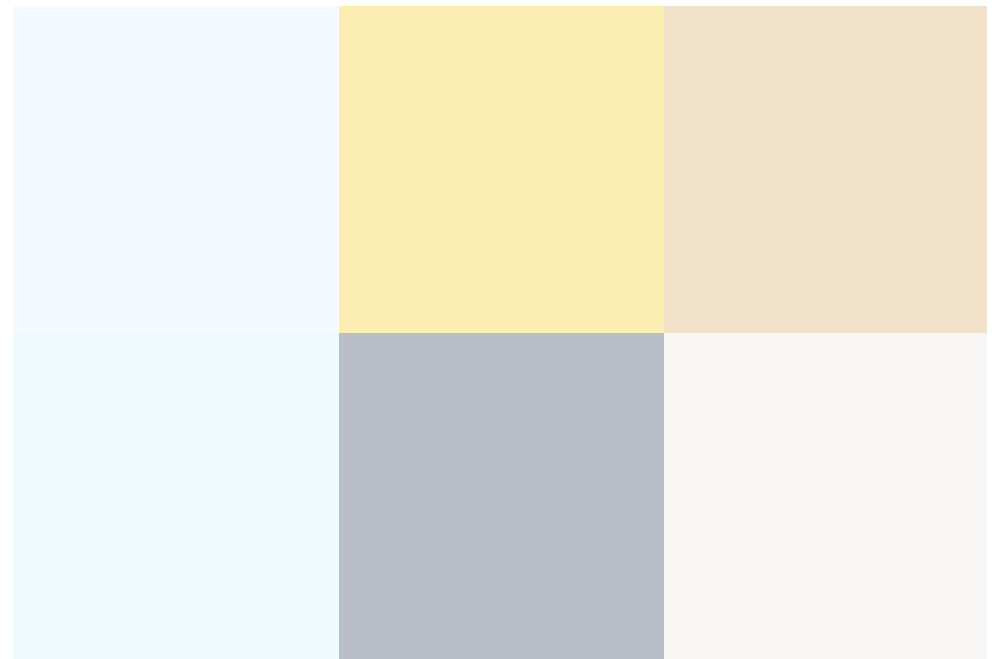
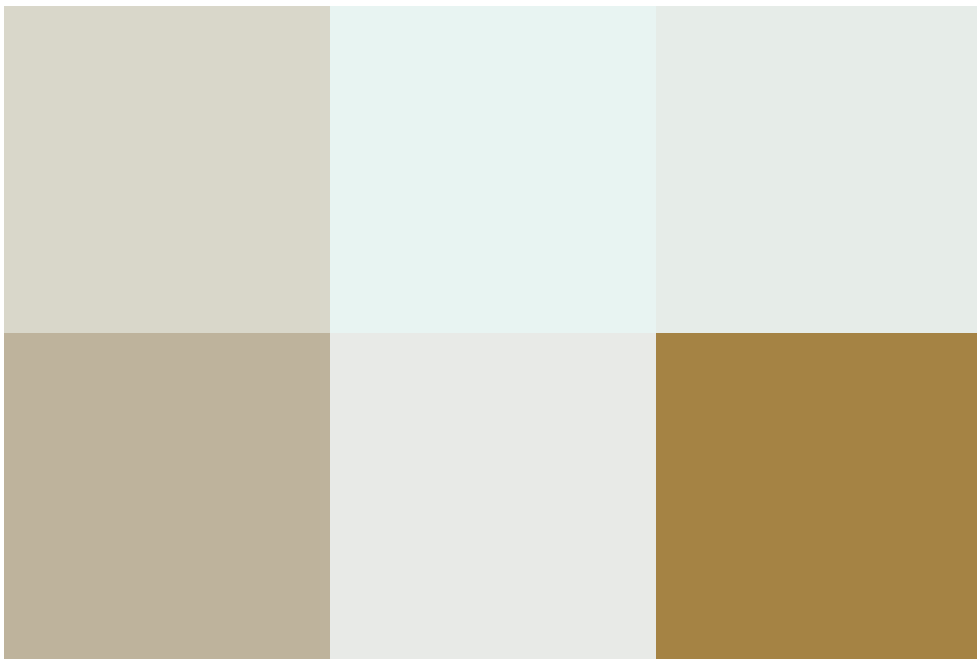
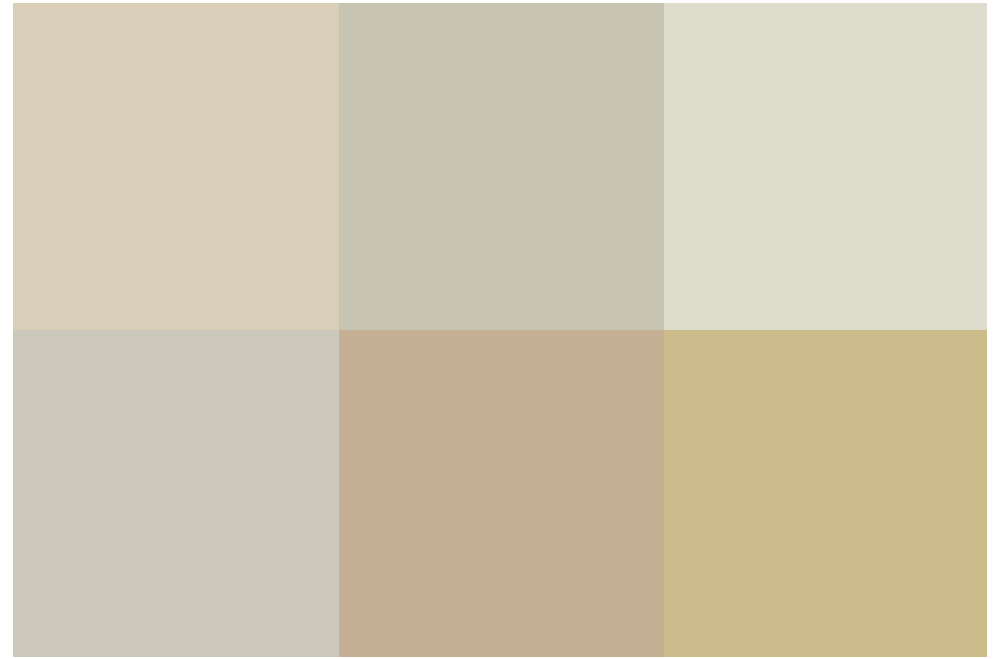
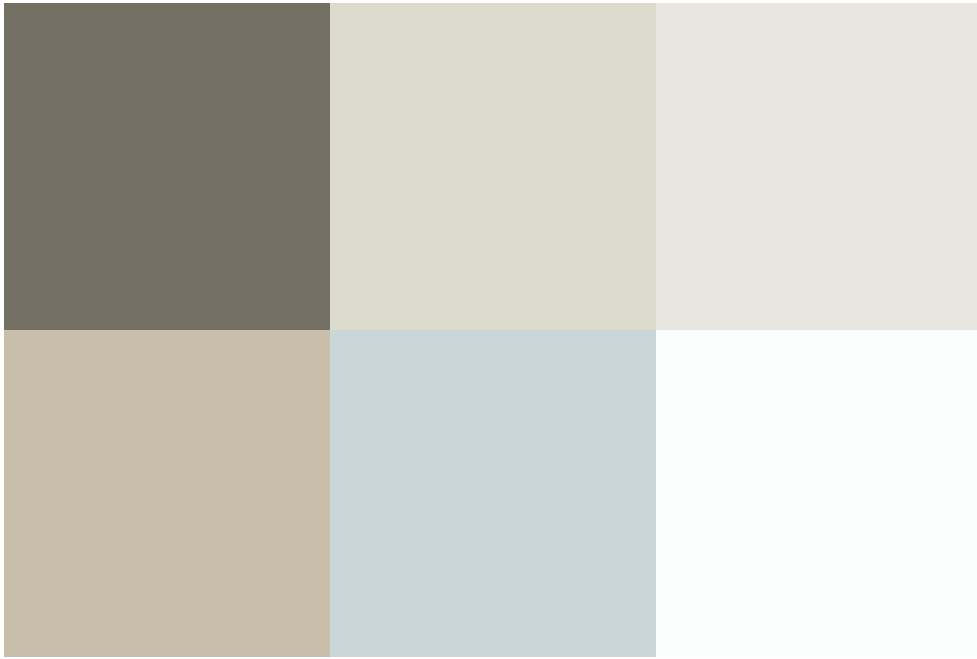


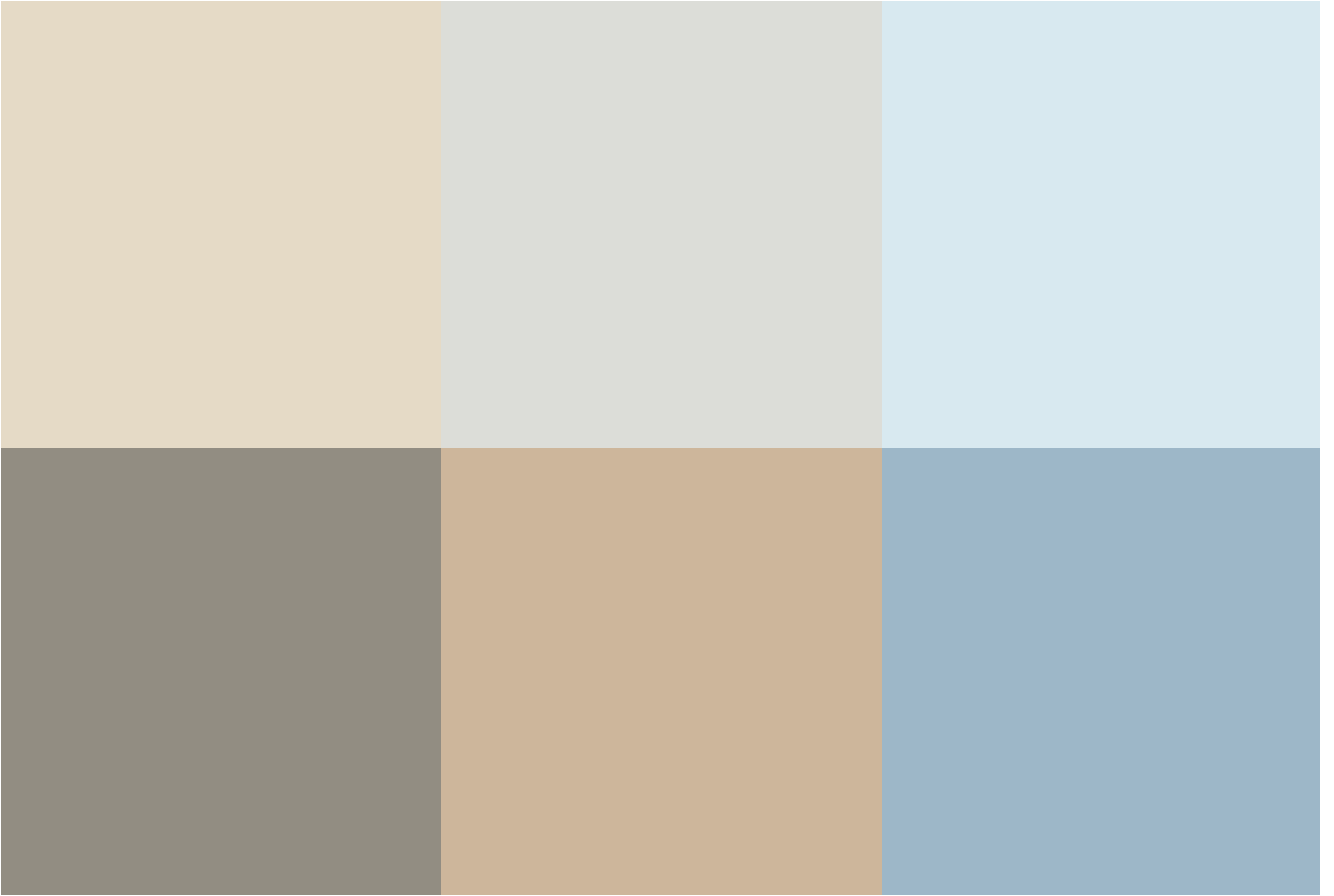
**\*\*NO ONWARD CHAIN\*\***

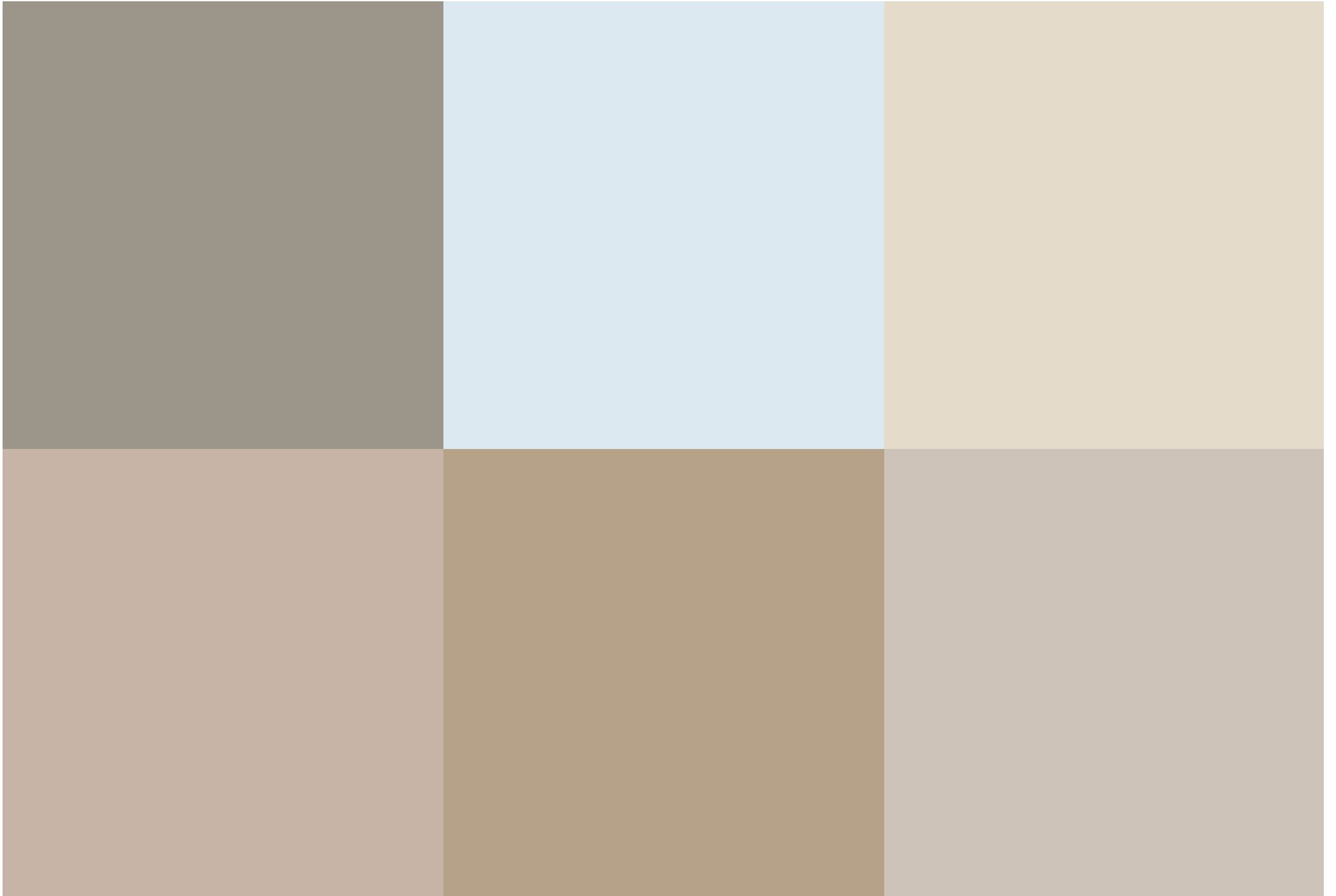
Situated in the sought-after Robinscroft, this modern 2-bedroom detached bungalow offers an exceptional opportunity to own a home on a rarely available street. Built approximately 5 years ago, this property combines contemporary living with the comfort of a well-planned layout. The home features a spacious open-plan kitchen and dining area, perfect for entertaining or everyday living. The two bedrooms include a large double and a generous single, offering versatile space for family, guests, or a home office.

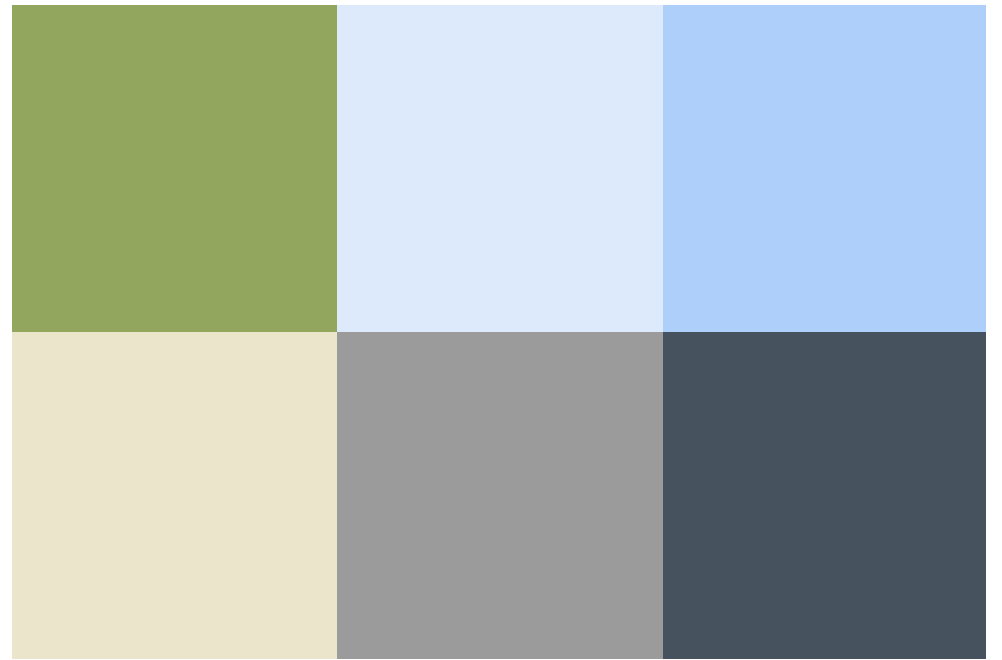
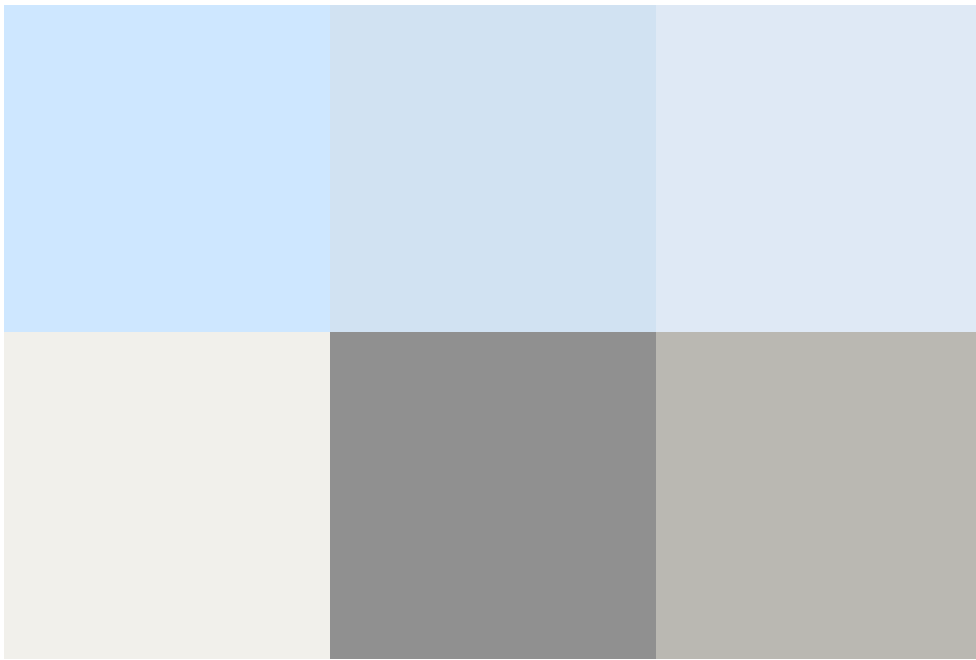
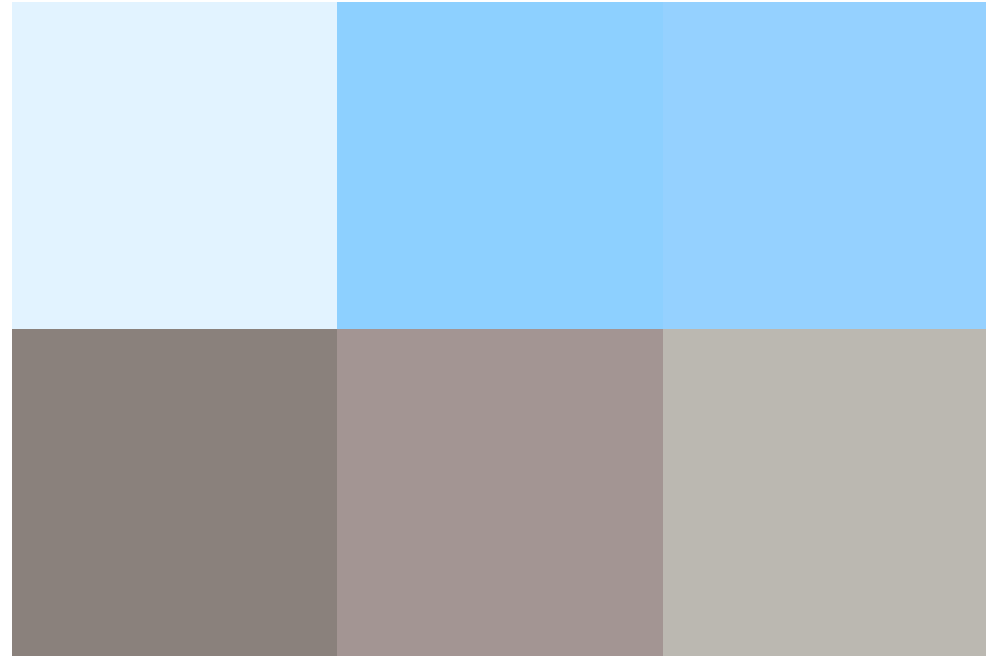
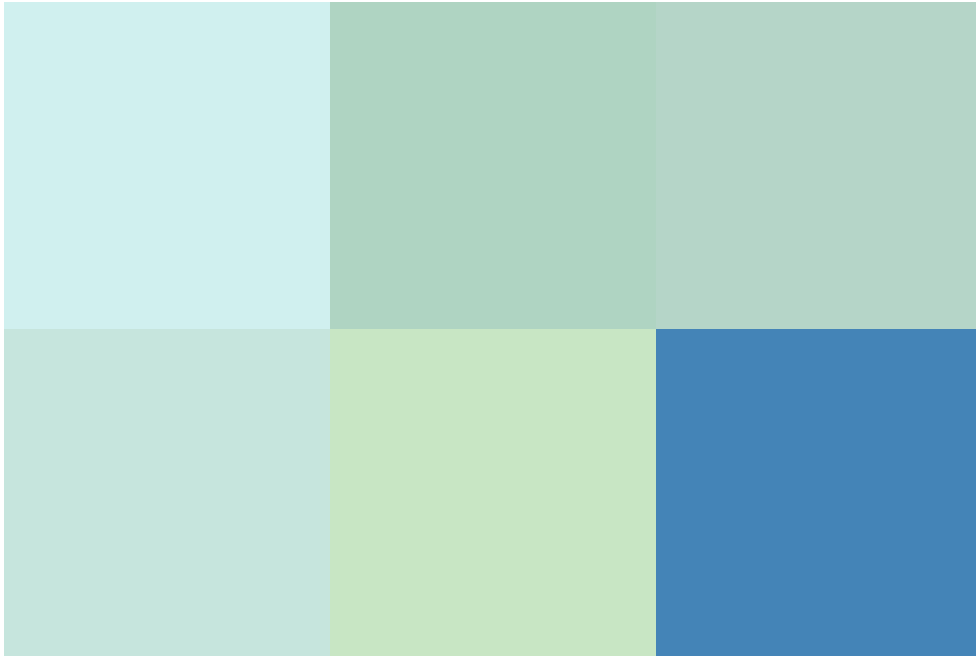
The family bathroom is stylish and well-appointed, complementing the modern finish throughout the home. Outside, the rear garden is designed for easy maintenance, providing a peaceful and private outdoor space to enjoy.

With its prime location and desirable features, this bungalow is expected to sell quickly. Don't miss your chance to view – properties like this are rarely available.









---

call us for a free  
valuation on your property

---

[northswindon@richardjames.uk](mailto:northswindon@richardjames.uk)

---

call us for a free  
valuation on your property

---

[northswindon@richardjames.uk](mailto:northswindon@richardjames.uk)

Gemini House | Hargreaves Road | SN25 5A7

