



Dolina Road, Haydon End, SN25 1TL

guide price **£300,000**

**richard
james**



 3  1  2

freehold

- THREE VERY LARGE DOUBLE BEDROOMS - CARPORT - ALLOCATED PARKING
- GENEROUS LIVING ACCOMMODATION -

This spacious three-bedroom terraced property offers modern living with the convenience of a carport and allocated parking. As you step inside, the welcoming entrance hallway leads to a convenient downstairs WC. The large living room flows seamlessly into a bright dining area and a stylish, contemporary kitchen—perfect for entertaining or family meals.

Upstairs, you'll find three impressively large double bedrooms. The principal bedroom stands out with its generous size, offering a hotel suite feel, complete with an ensuite shower room and fitted wardrobes. The additional two double bedrooms provide ample space, and a well-appointed three-piece bathroom suite with built-in storage ensures practicality.

Outside, the property boasts a sunny, enclosed garden—ideal for relaxing or outdoor dining. This home combines comfort and style, making it a perfect choice for families or those seeking extra space.

EPC Rating - C
Council Tax Band - D







- THREE VERY LARGE DOUBLE BEDROOMS
- CARPORT
- ALLOCATED PARKING
- GENEROUS LIVING ACCOMMODATION



richard
james



exceptional service

Our team will guide you through the process of buying or selling your home.

We have a team of dedicated sales progressors in place to ensure your purchase or sale runs smoothly through to completion, keeping you in the loop and a close eye on your chain while moving you in as swiftly and smoothly as possible.

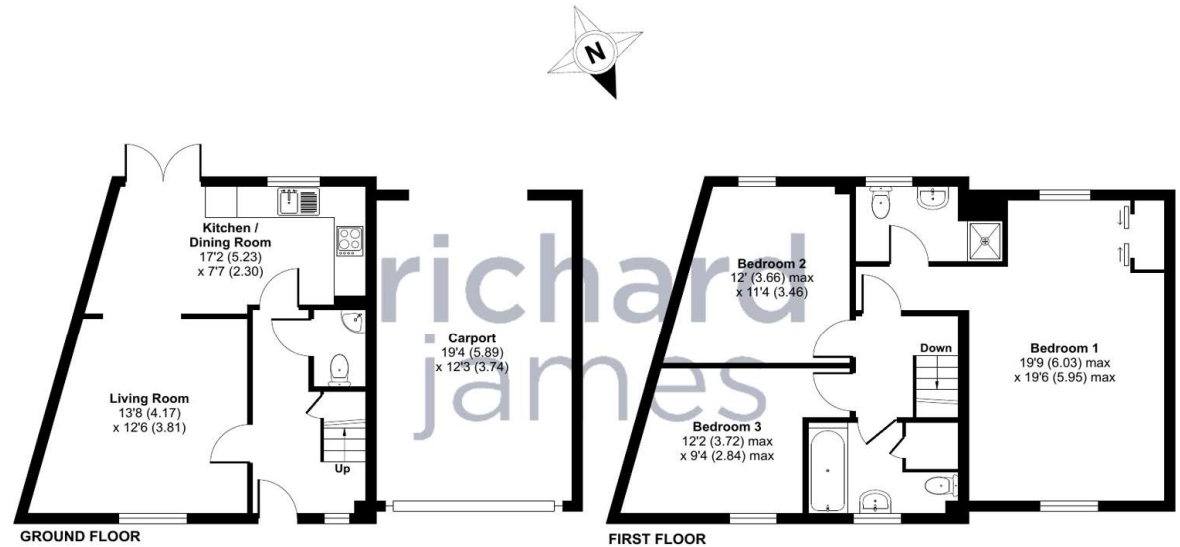
- Honest valuations in current market conditions
- Dedicated sales progression team
- Recommended financial advisors
- 5* service from valuation to completion
- Award winning lettings service
- Ahead of the game marketing strategies
- Professional photography
- Social media marketing
- Top listings on Rightmove and Zoopla

call us for a free
valuation on your property

northswindon@richardjames.uk

Gemini House | Hargreaves Road | SN25 5AZ

Approximate Area = 1018 sq ft / 94.5 sq m (exclude carport)
For identification only - Not to scale



Floor plan produced in accordance with RICS Property Measurement Standards incorporating International Property Measurement Standards (IPMS2 Residential). © rjchecon 2024. Produced for Richard James. REF: 1191009

Richard James & their clients give notice that:

1. These sales and particulars do not constitute any part of an offer of contract, and are for the guidance of prospective purchasers only and should not be relied on as statements of fact.
2. No representations are made in these particulars as to the condition of the property or as to whether any service or facilities are in good working order.
3. All Measurements are approximate.

rightmove