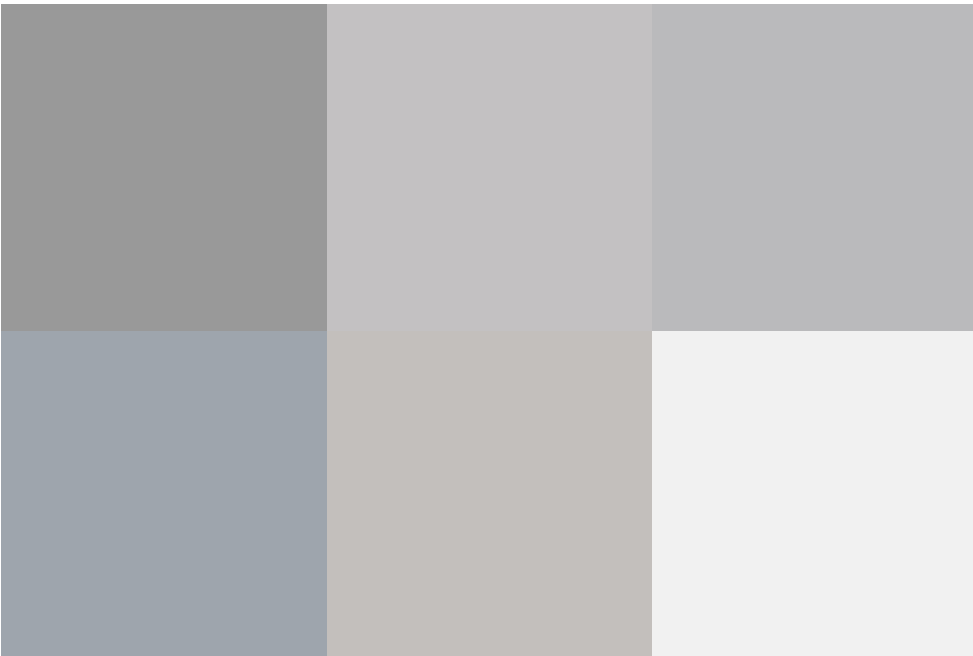
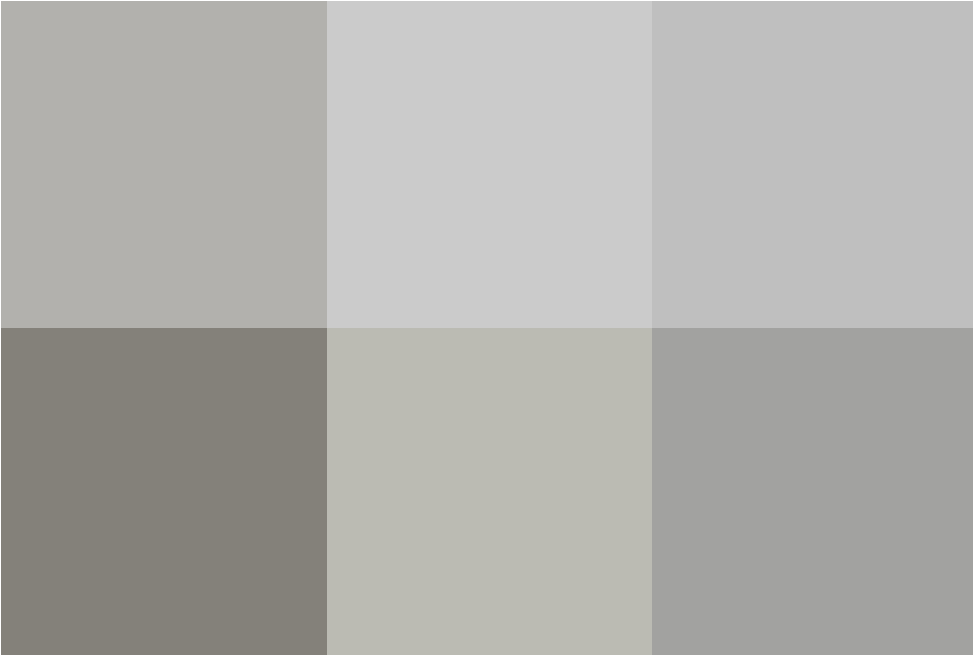


Larchmore Close, Haydon Wick, SN25 3QG

Offers over **£280,000**



This well-loved and beautifully maintained 3-bedroom property in the highly sought-after area of Larchmore, Greenmeadow, offers a perfect family home.

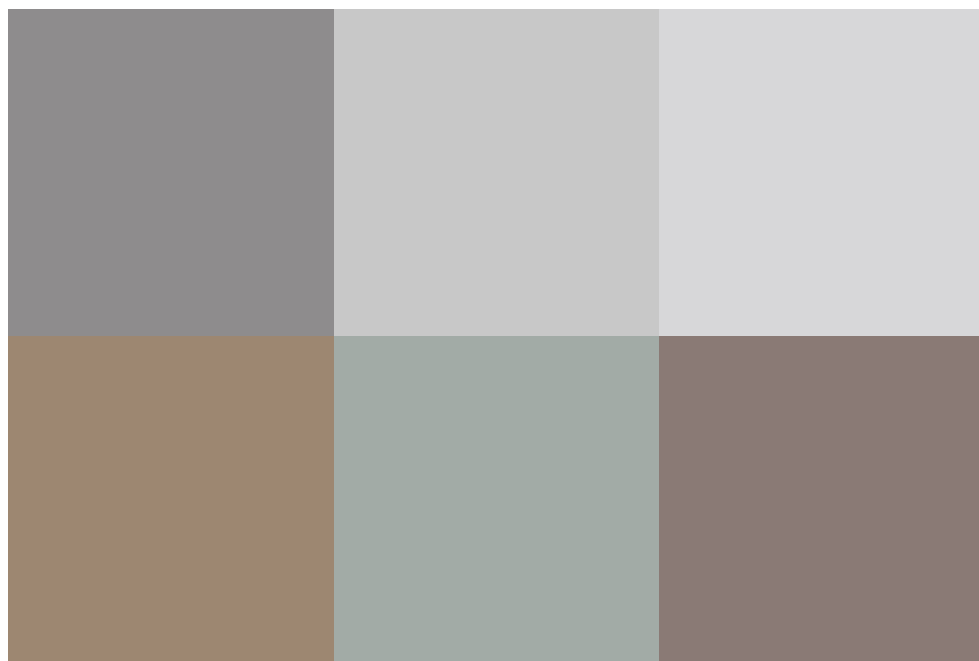
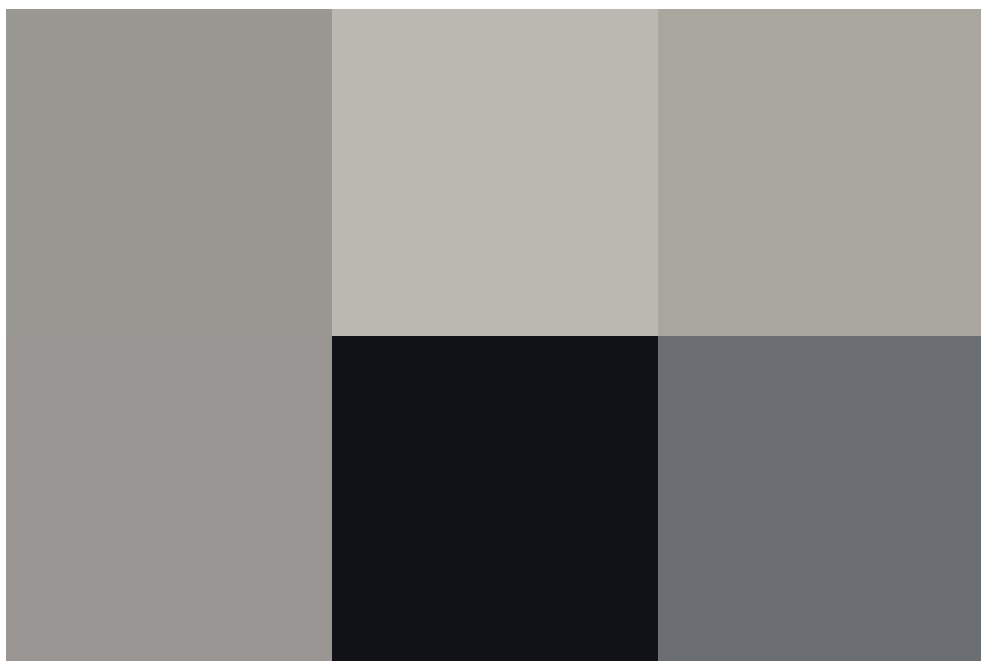
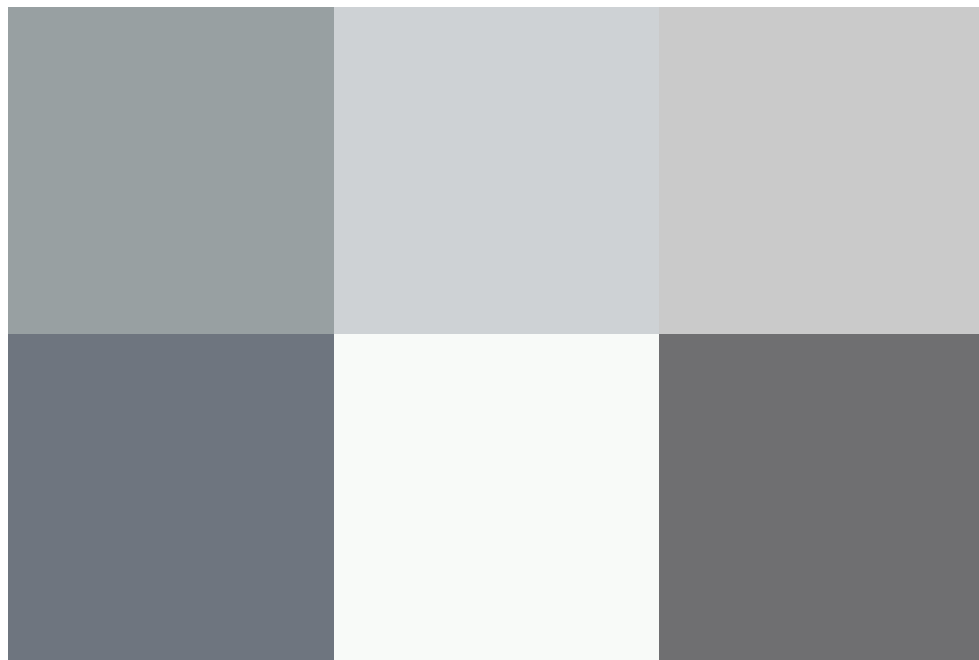
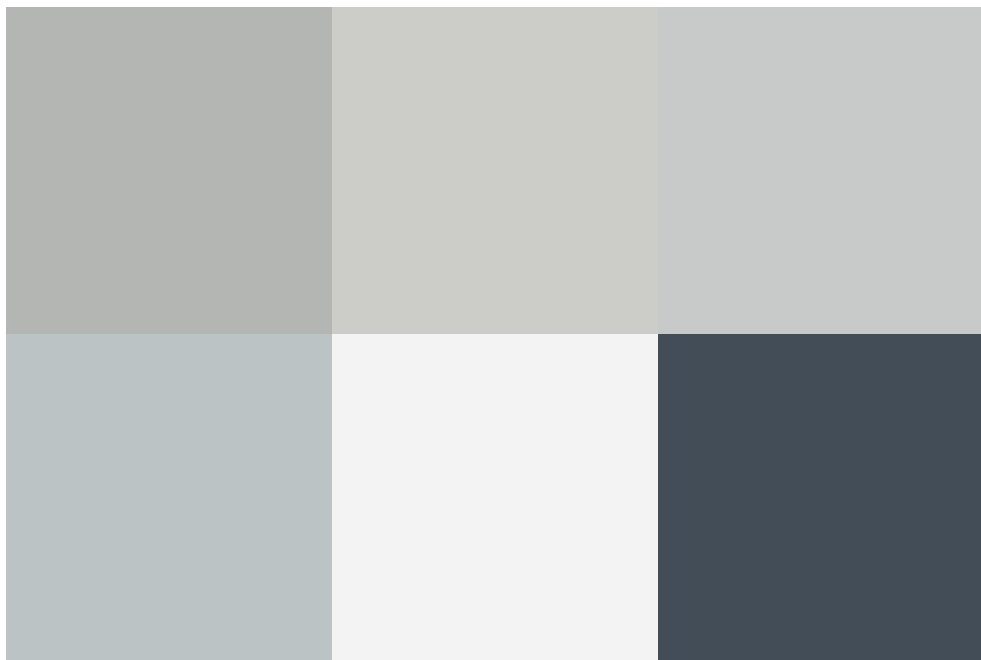
On the ground floor, you are greeted by a welcoming entrance hall leading to an integral garage, a modern kitchen, and a spacious living room. The home boasts an extended dining area, ideal for entertaining or family meals, with natural light flooding the space.

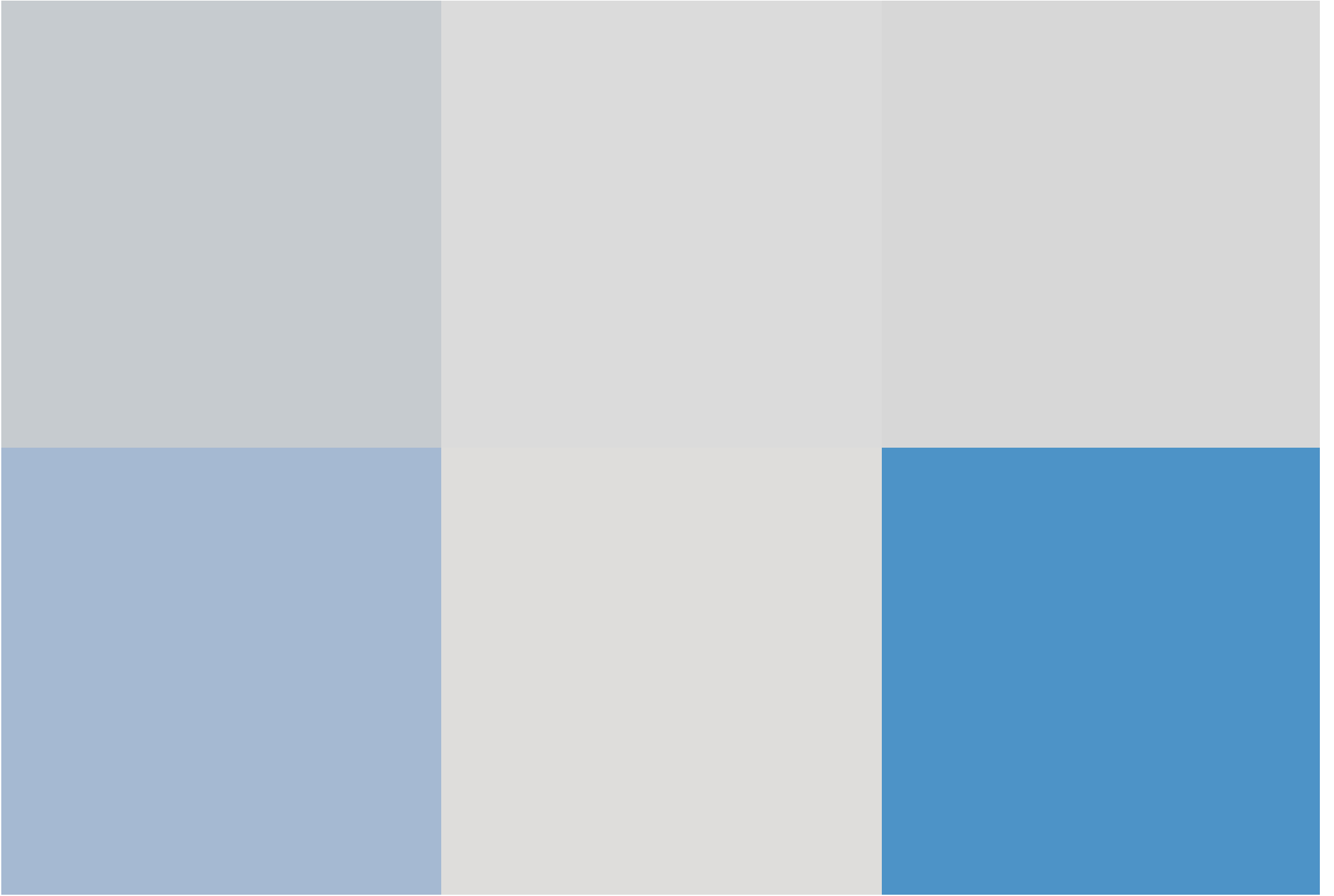
Upstairs, the property features three well-proportioned bedrooms, including two generous double bedrooms and a comfortable single, perfect for a home office or child's bedroom. The family bathroom is tastefully designed and offers a functional layout.

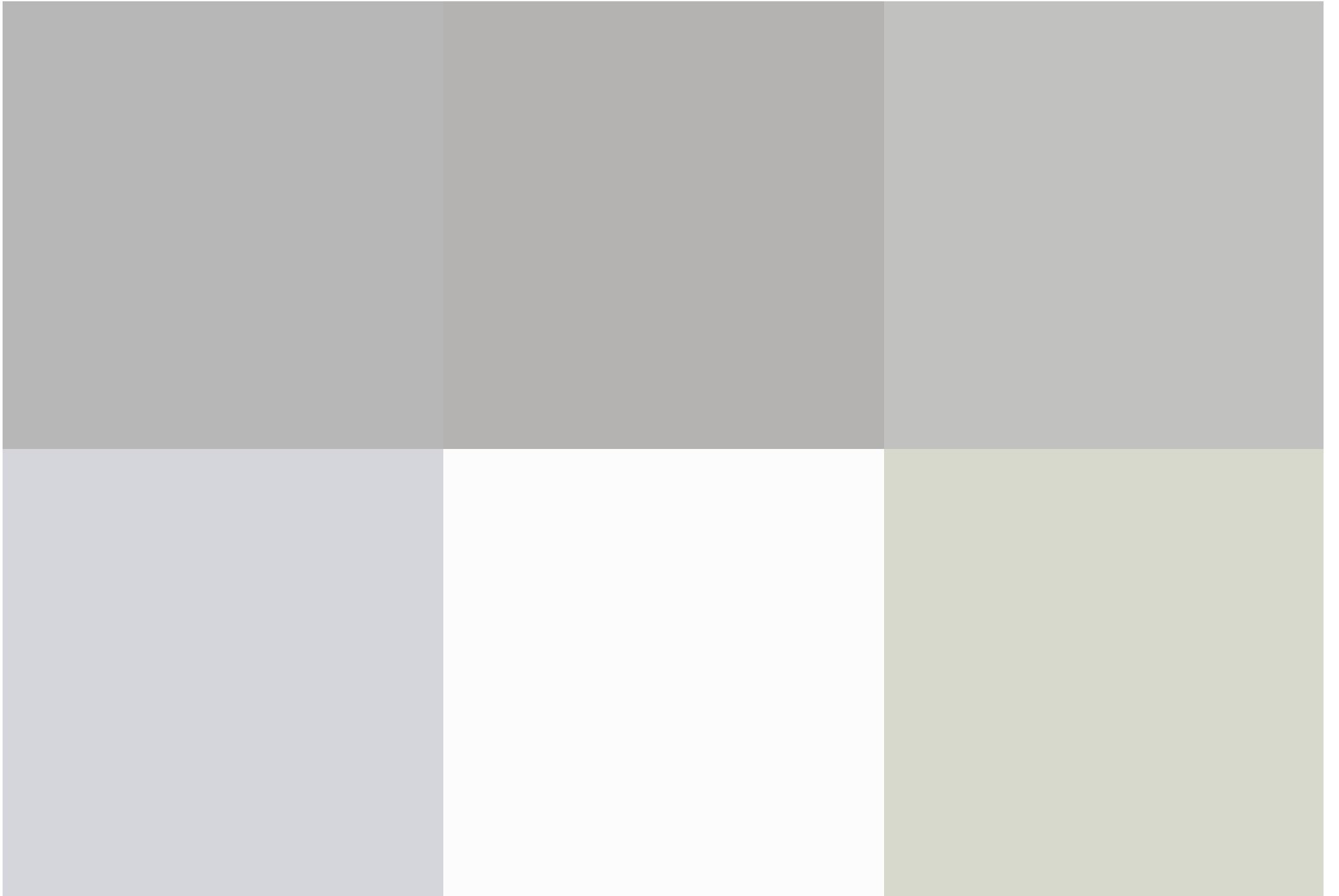
Externally, the rear garden is mostly laid to lawn, complete with a patio area for outdoor dining or relaxing. With rear access via a gate, this garden space is ideal for families and those who enjoy outdoor living.

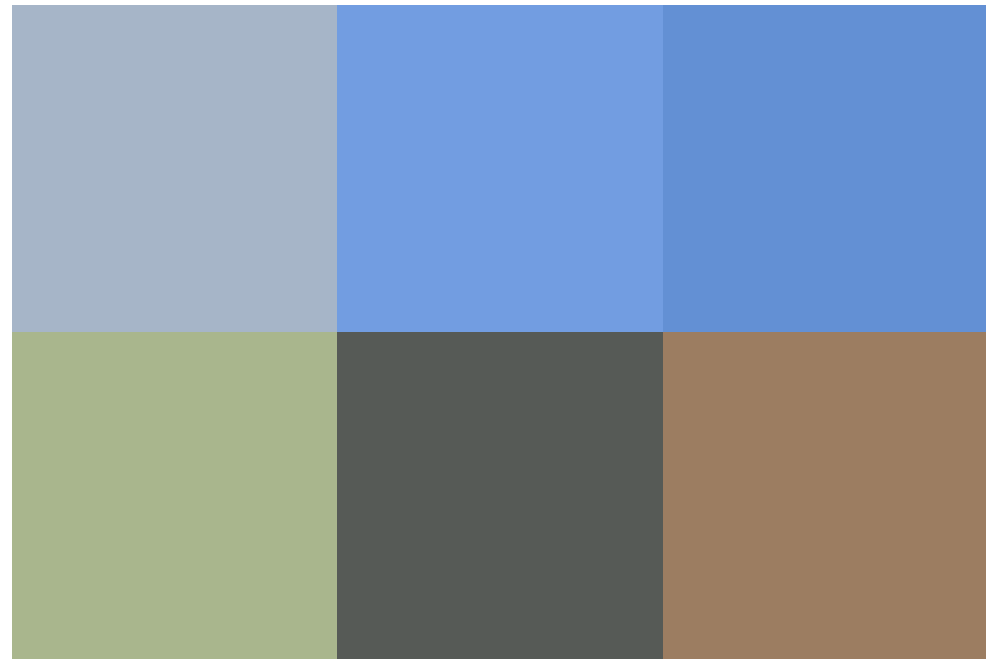
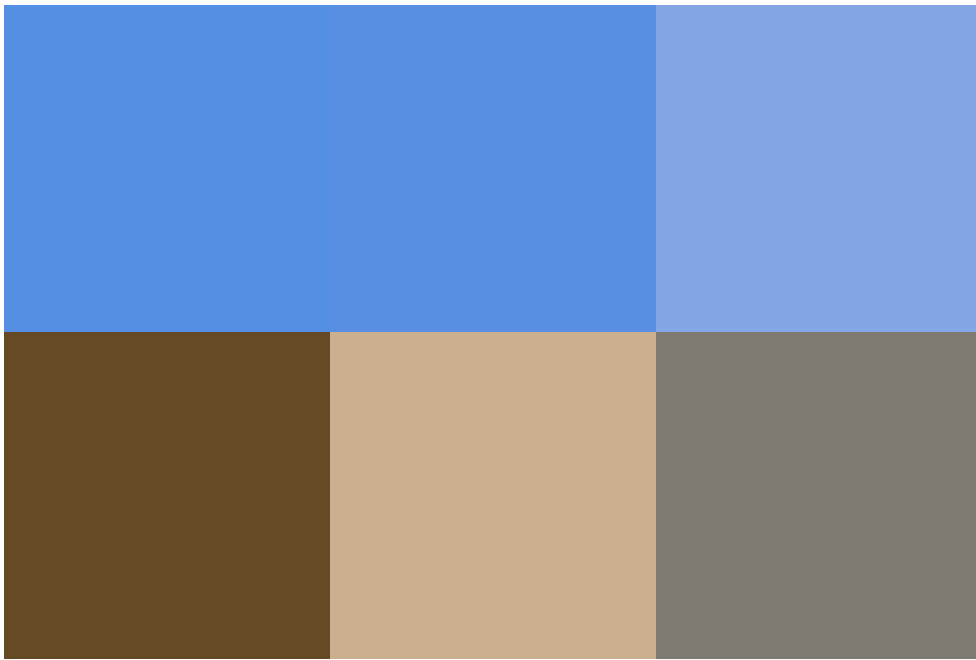
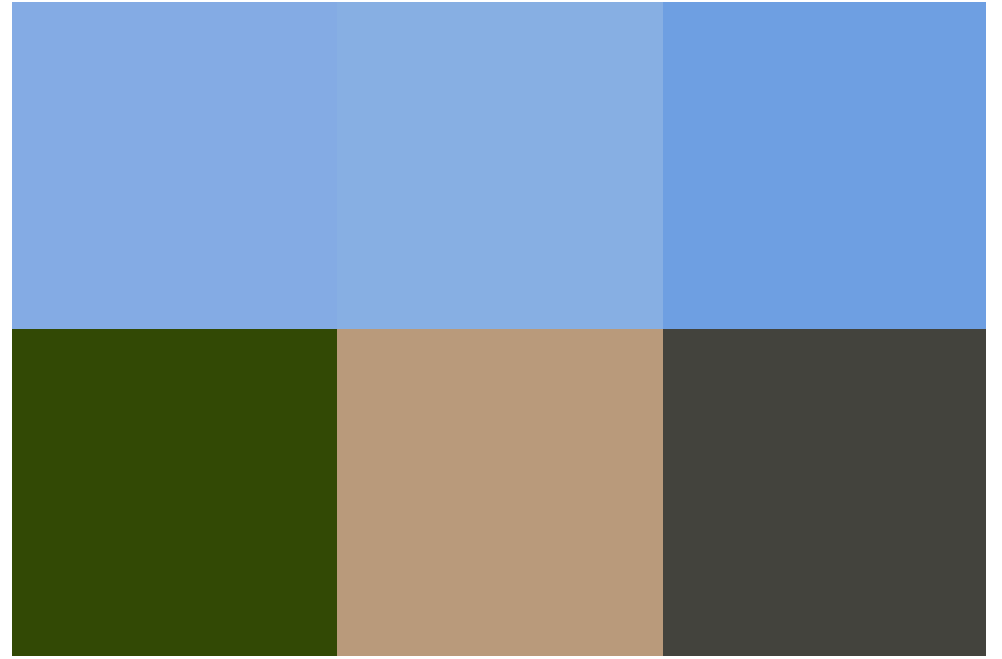
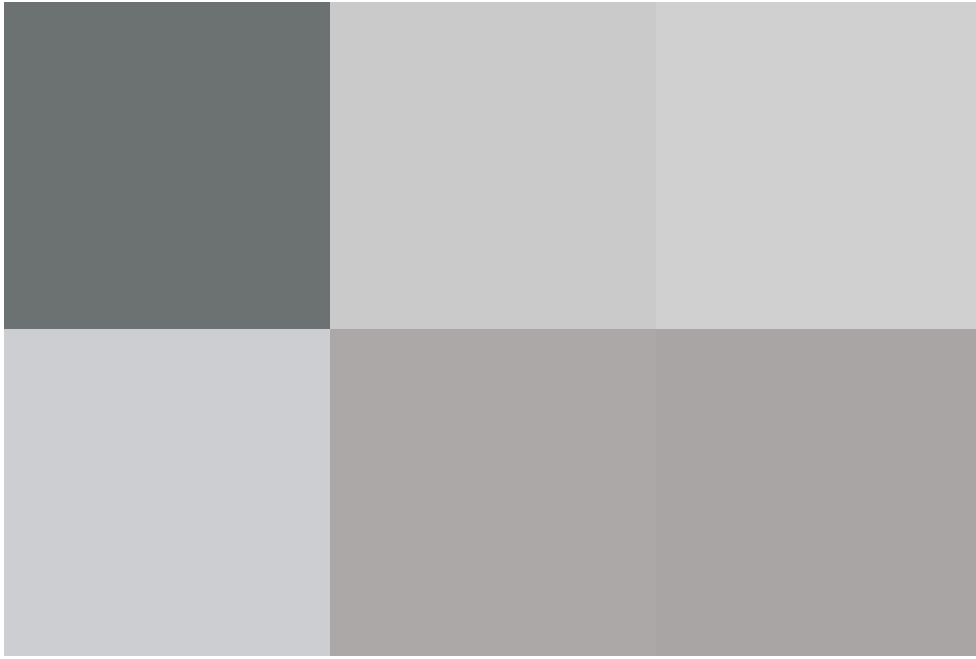
The location is a real highlight, within walking distance to the local primary school, a short stroll to the nearby Morrisons supermarket, and close to the ever-popular Orbital Retail Park, offering a range of shops, restaurants, and amenities.

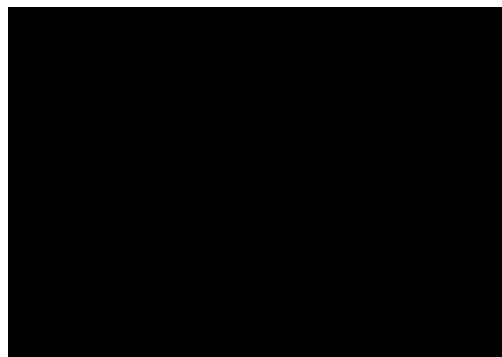
Don't miss the chance to view this wonderful family home in one of North Swindon's most desirable areas!











call us for a free
valuation on your property

northswindon@richardjames.uk

Gemini House | Hargreaves Road | SN25 5AZ