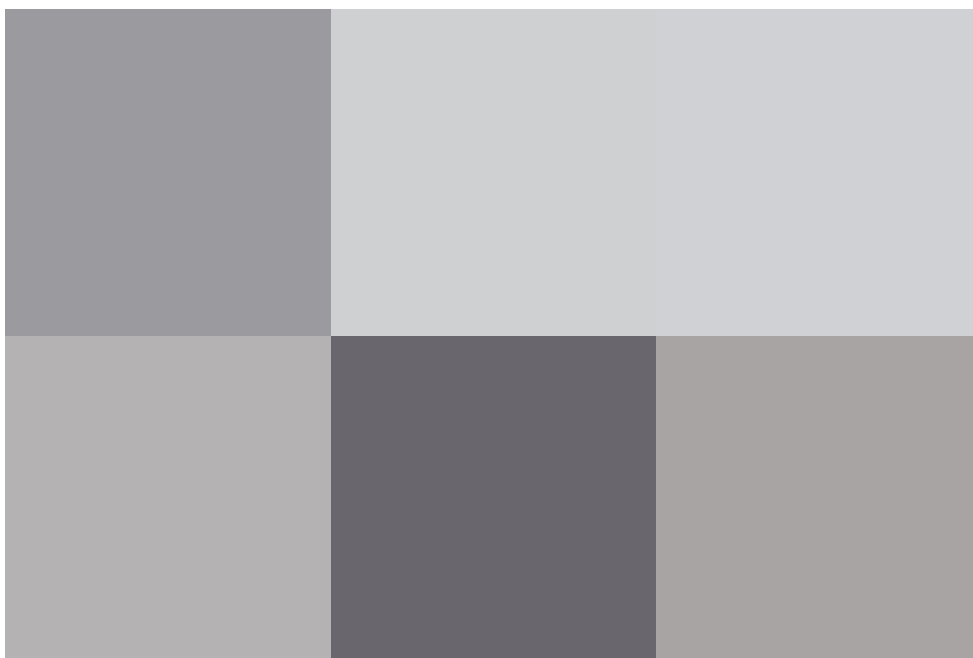
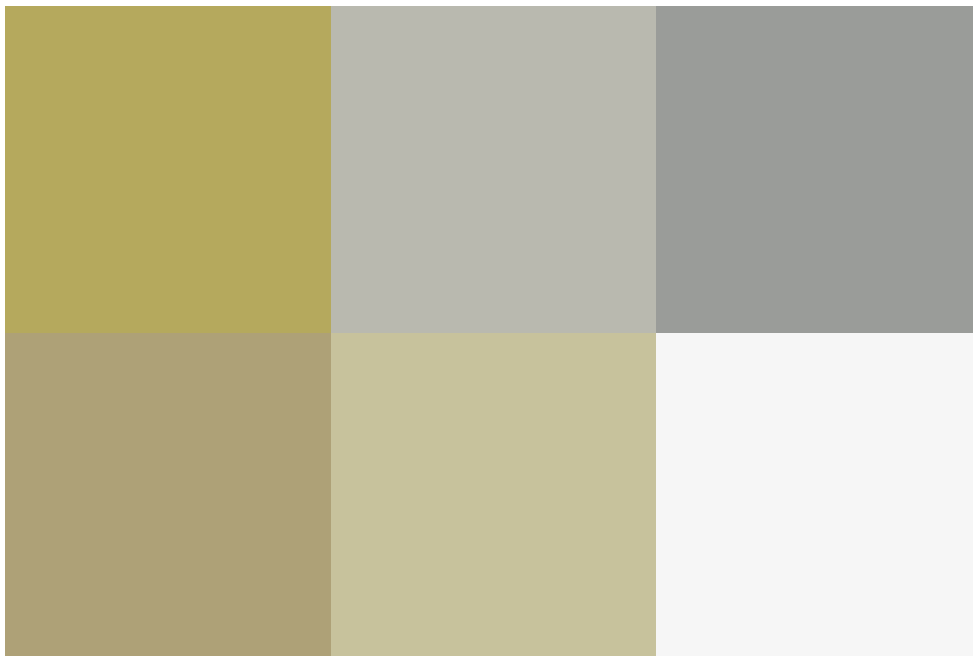


High Street, Swindon, SN25 1HU

Guide price **£300,000 - £350,000**



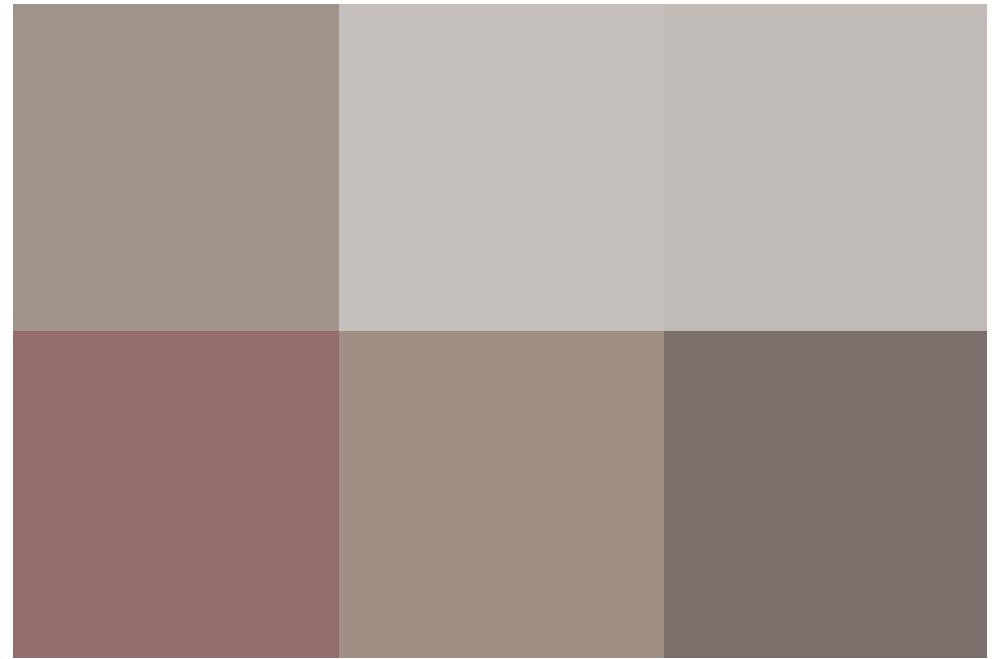
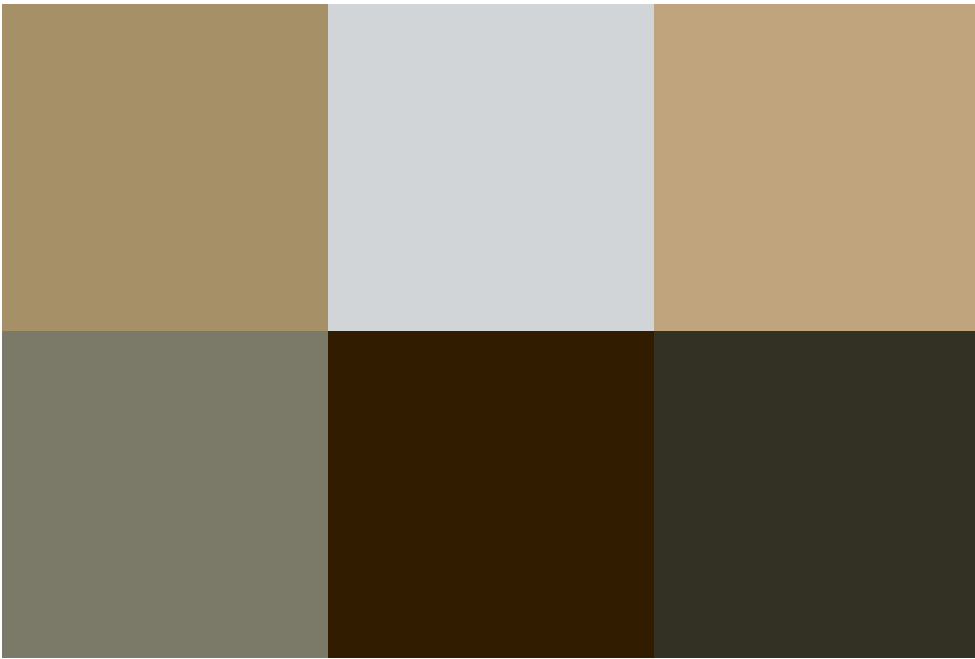
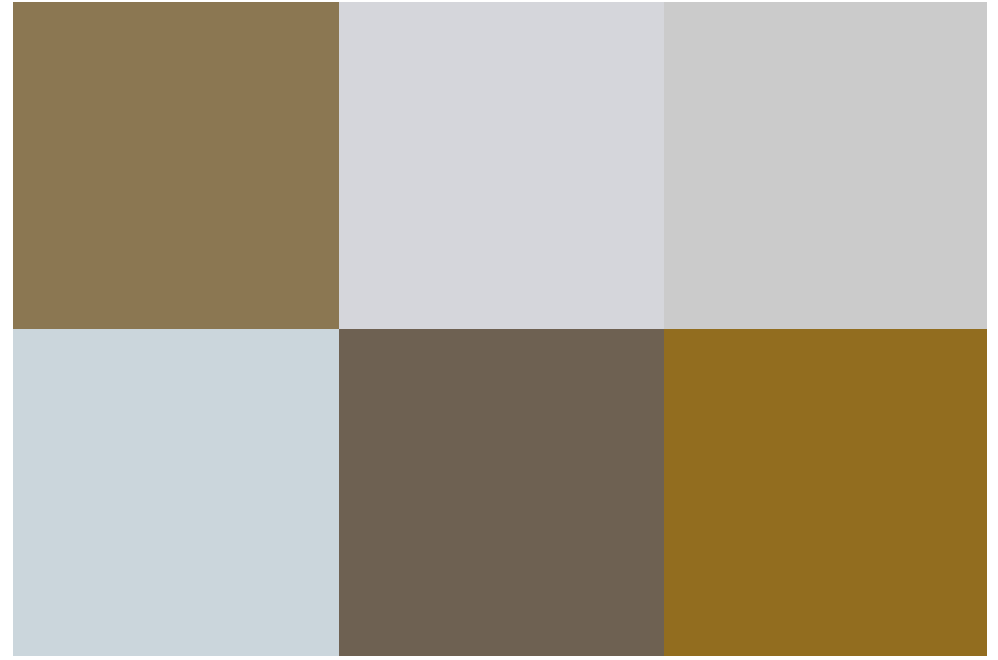
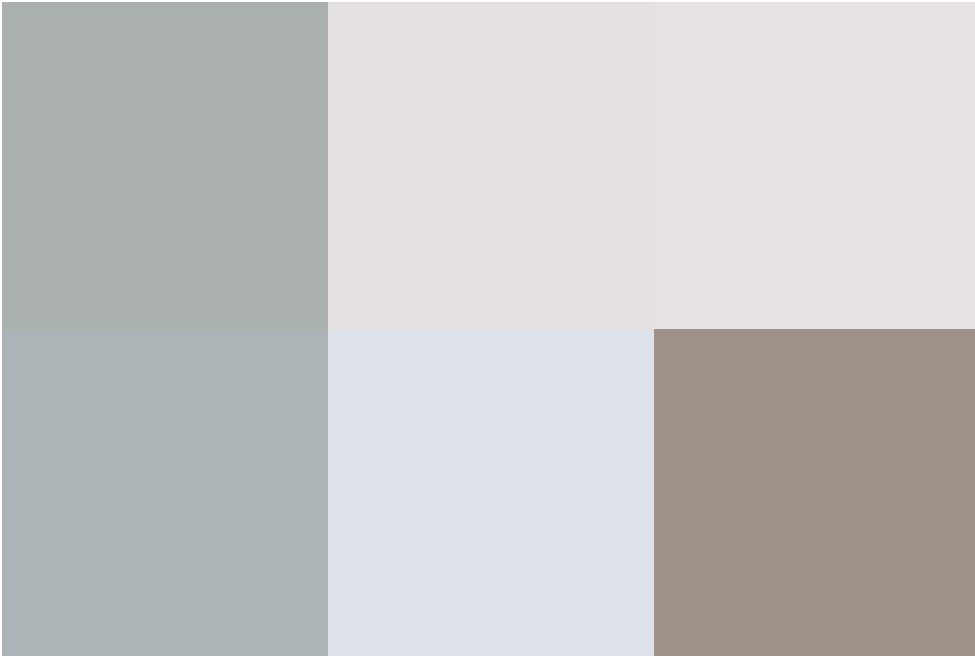
****GUIDE PRICE £300,000 - £350,000****

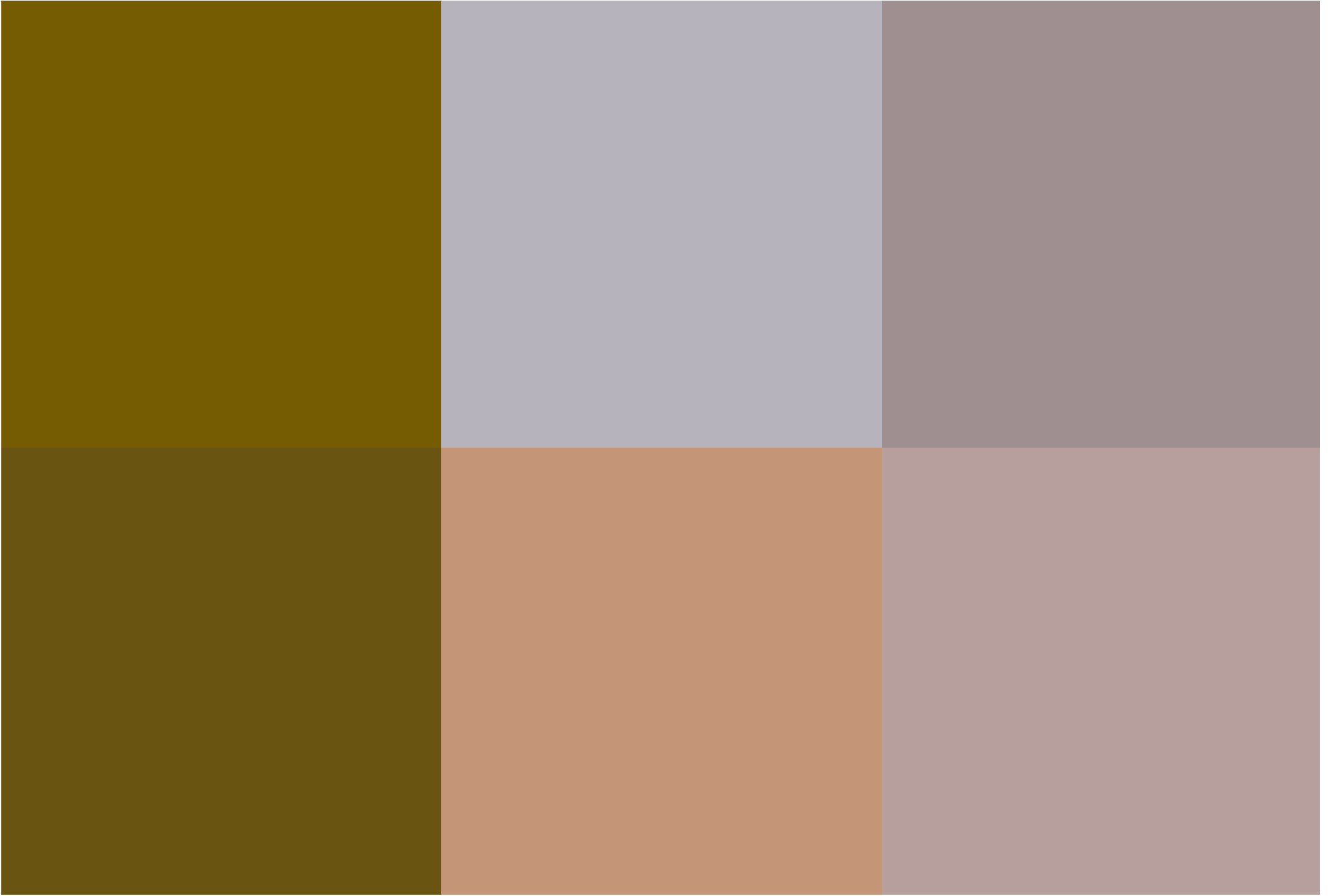
Welcome to this delightful double-fronted bungalow in the highly sought-after area of Haydon Wick. Bursting with character, this charming property boasts two spacious bedrooms, including a master bedroom with a beautiful bay window that floods the room with natural light.

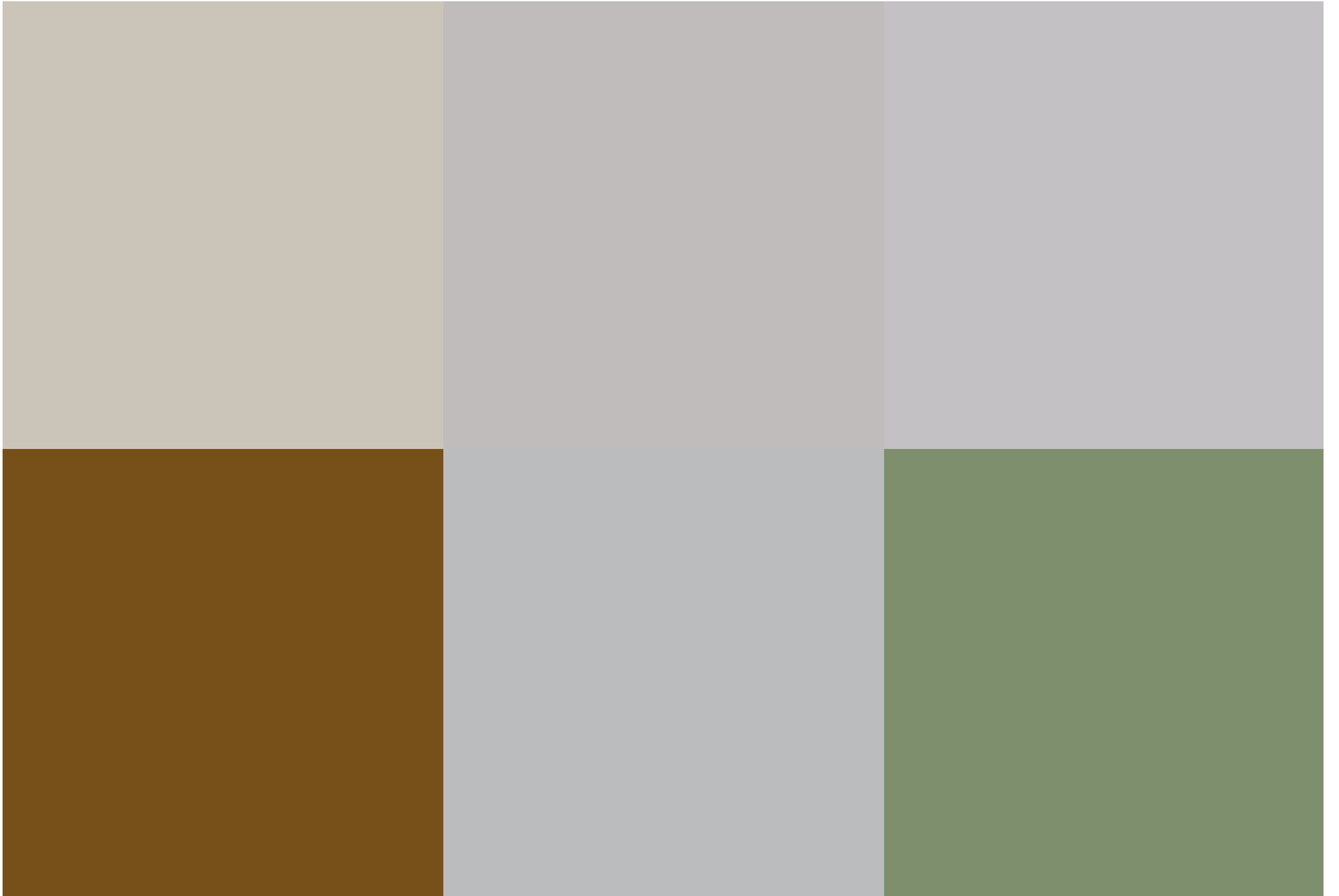
The living space includes a bay-fronted lounge, perfect for cozy evenings, a well-proportioned dining room, and a conservatory that offers an ideal spot to relax and enjoy the garden views. The kitchen is practical and well-equipped, providing plenty of storage and workspace. The bathroom has also been improved to add a double shower for added convenience.

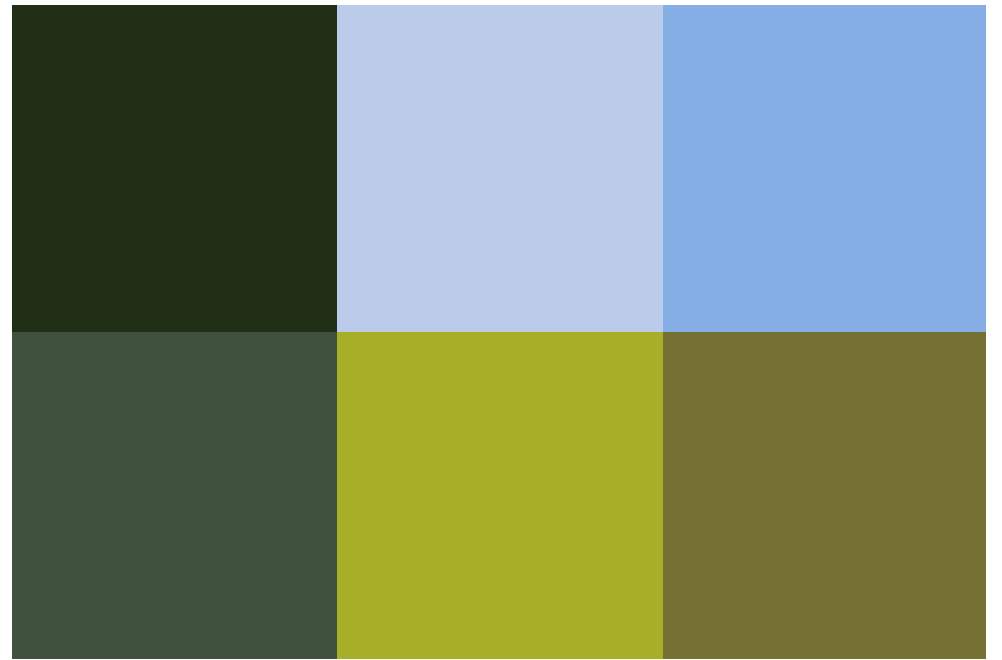
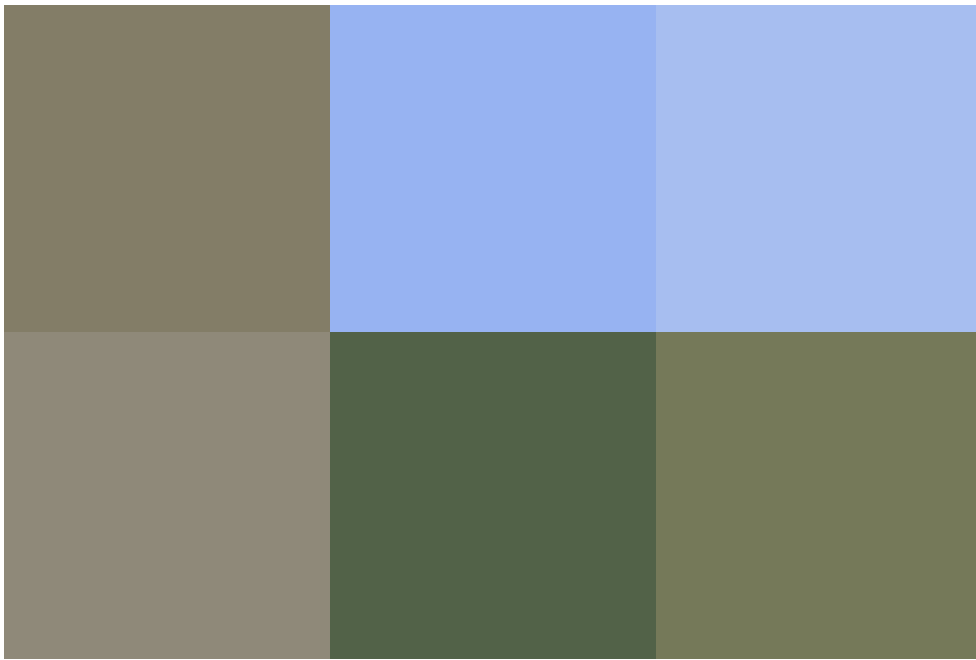
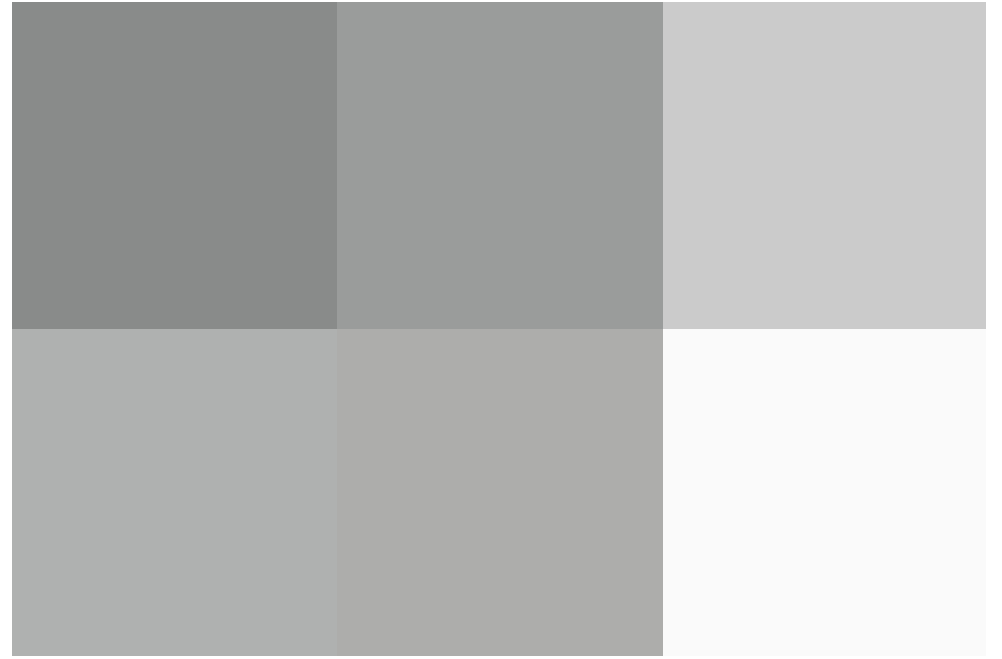
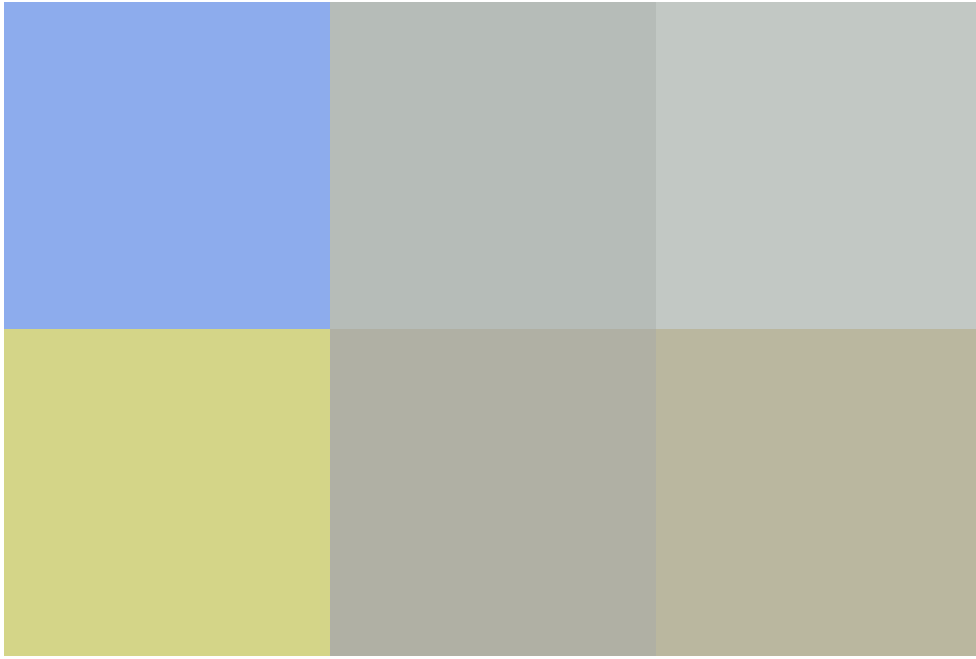
Outside, the property offers a large driveway to the front, providing ample parking, and a low-maintenance rear garden laid to stones and patio, with some mature shrubs adding a touch of greenery.

Located within walking distance of local schools and the popular Morrisons supermarket, this home is perfectly situated for families and those seeking convenience. Don't miss the chance to make this charming bungalow your own!











call us for a free
valuation on your property

northswindon@richardjames.uk

call us for a free
valuation on your property

northswindon@richardjames.uk

Gemini House | Hargreaves Road | SN25 5AZ