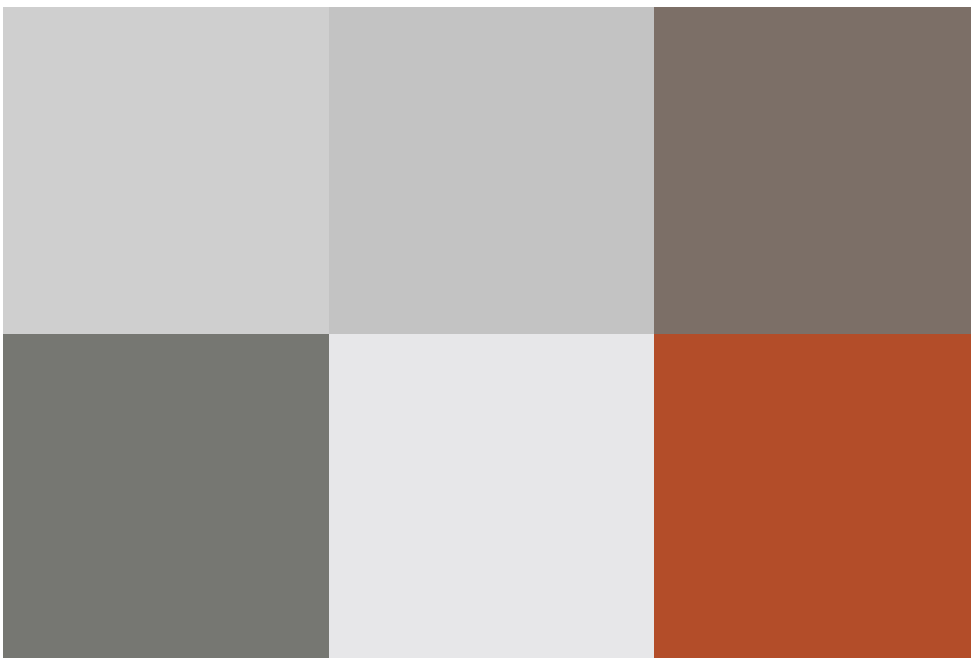
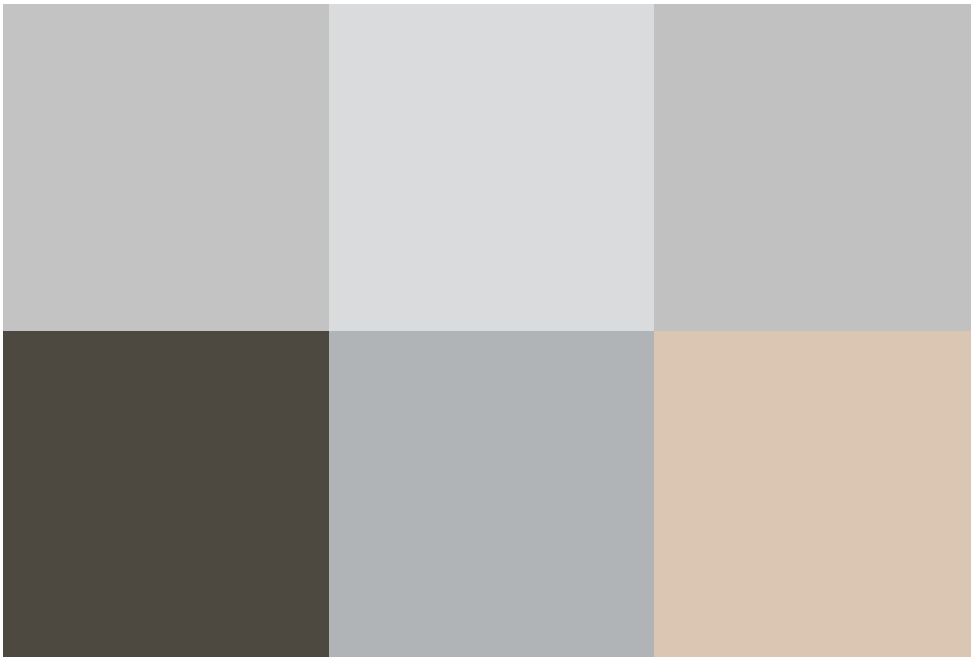


Slade Drive, Stratton, SN3 4DL

asking price **£280,000**



 3  1  1

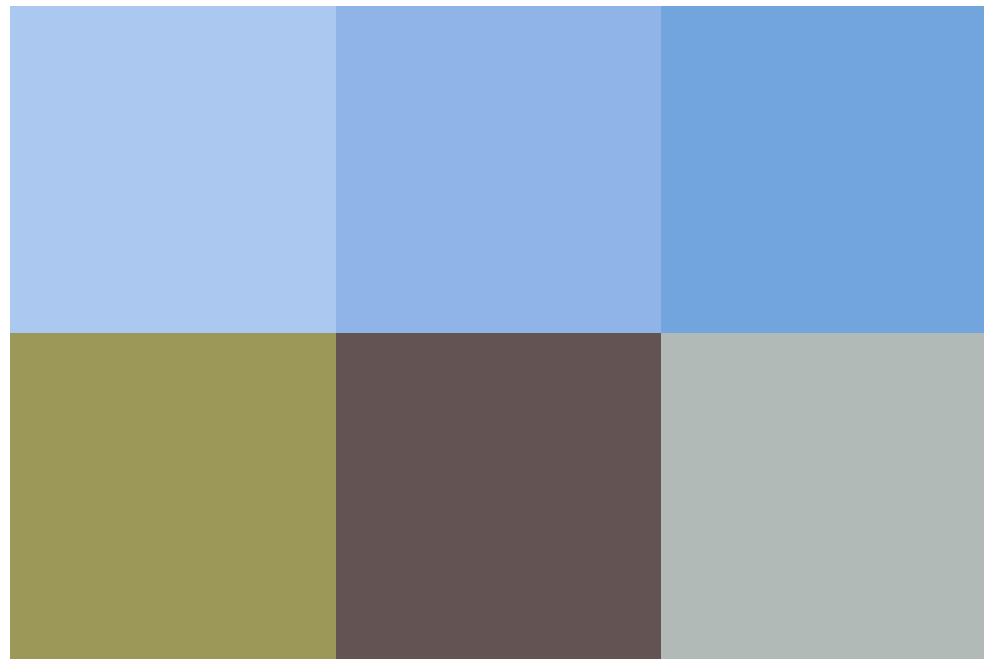
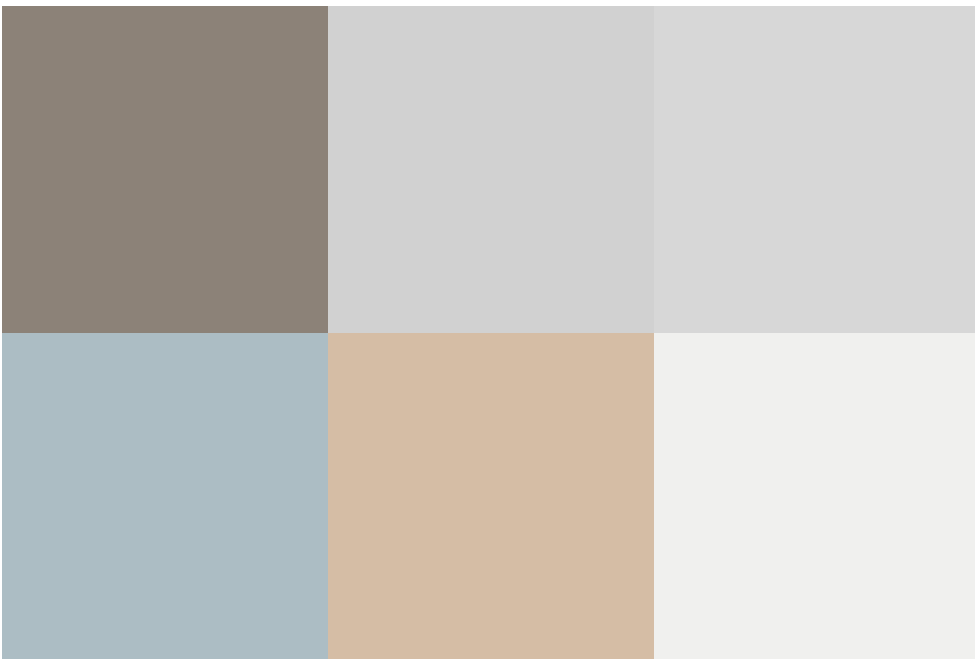
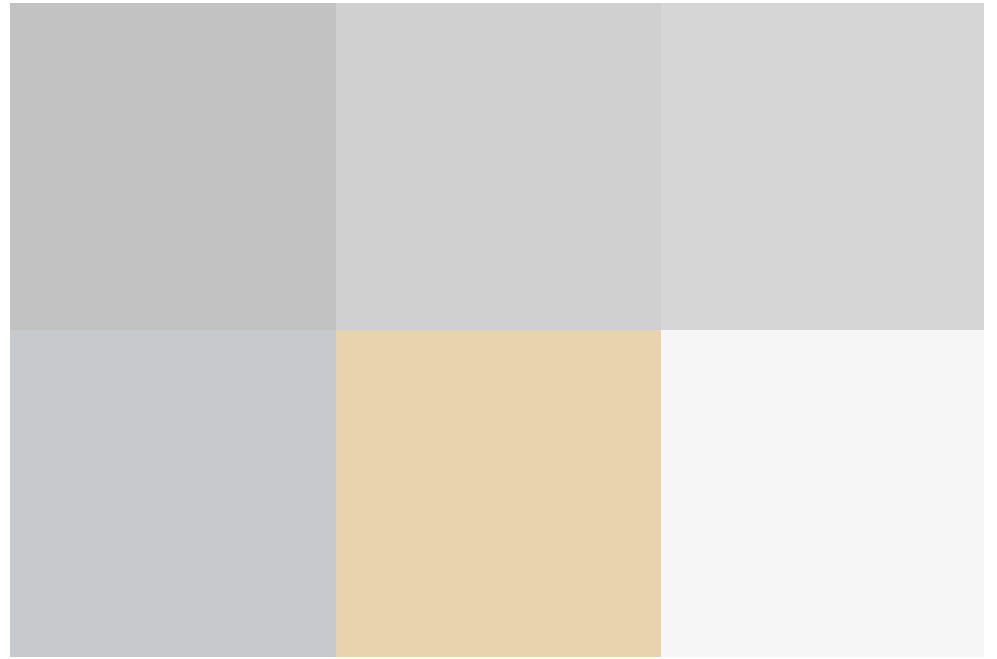
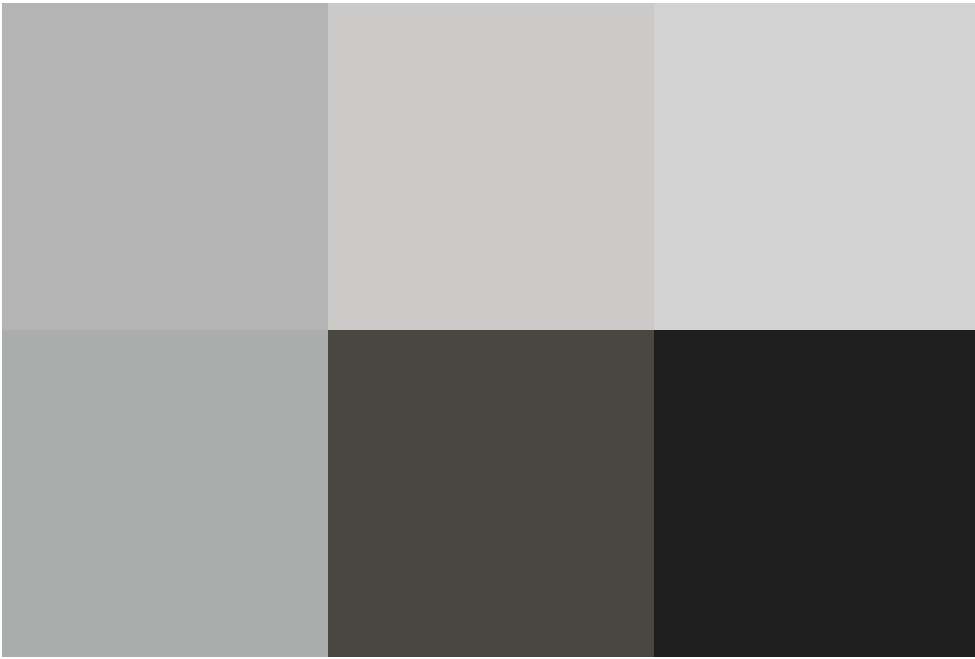
THREE BEDROOM SEMI DETACHED BUNGALOW PRESENTED TO A HIGH STANDARD THROUGHOUT AND BENEFITS FROM A MODERN KITCHEN AND BATHROOM WHICH IS BEING SOLD WITH NO ONWARD CHAIN.

The property has been decorated and maintained to a high standard, there are three bedrooms and a family bathroom as well as a garage and conservatory.

The bedrooms are all to the front of the home allowing a lovely open plan L shape area to the rear to host. The kitchen is modern and decorated with neutral tones and allows access into the conservatory.

Externally the home has a large frontage as well as rear garden with conservatory and garage. The home is situated near Greenbridge retail park and offers great access to bus stops and transport links.

You can access the home from Lanac Road.



exceptional service

Our team will guide you through the process of buying or selling your home.

We have a team of dedicated sales progressors in place to ensure your purchase or sale runs smoothly through to completion, keeping you in the loop and a close eye on your chain while moving you in as swiftly and smoothly as possible.

- Honest valuations in current market conditions
- Dedicated sales progression team
- Recommended financial advisors
- 5* service from valuation to completion
- Award winning lettings service
- Ahead of the game marketing strategies
- Professional photography
- Social media marketing
- Top listings on Rightmove and Zoopla

call us for a free
valuation on your
property

eastswindon@richardjames.uk

Grange Drive | Stratton | SN3 4LA



Richard James & their clients give notice that:

1. These sales and particulars do not constitute any part of an offer of contract, and are for the guidance of prospective purchasers only and should not be relied on as statements of fact.
2. No representations are made in these particulars as to the condition of the property or as to whether any service or facilities are in good working order.
3. All Measurements are approximate.

