



Malone Avenue, St Andrews Ridge, SN25 4EE

guide price **£300,000 - £325,000**

**richard
james**



 3  1  2

Located in the highly sought-after area of St. Andrews Ridge, this delightful 3-bedroom terraced home offers comfortable modern living in a lovely, family-friendly neighborhood. With easy access to local amenities, schools, and transport links, this property is ideal for those looking for convenience and a peaceful community.

Downstairs, the home features a light, airy, and spacious living room with a neutral décor, perfect for relaxing or entertaining. The open-plan kitchen-diner is modern and well-appointed, offering ample space for family meals and gatherings.

Upstairs, you'll find three well-proportioned bedrooms, including the main bedroom with an en-suite, perfect for added privacy. There's also a modern family bathroom, stylishly designed for comfort and convenience.

The landscaped rear garden features low-maintenance artificial lawn and offers rear access, creating a perfect space for outdoor activities. Additional benefits include a garage with parking directly in front, ensuring ample space for vehicles.

This is a must-see home, ideal for families or professionals. Book your viewing today and discover the charm of Malone Avenue for yourself!

EPC - B





richard
james



richard
james



•

call us for a free
valuation on your property

northswindon@richardjames.uk

Gemini House | Hargreaves Road | SN25 5AZ

exceptional service

Our team will guide you through the process of buying or selling your home.

We have a team of dedicated sales progressors in place to ensure your purchase or sale runs smoothly through to completion, keeping you in the loop and a close eye on your chain while moving you in as swiftly and smoothly as possible.

- Honest valuations in current market conditions
- Dedicated sales progression team
- Recommended financial advisors
- 5* service from valuation to completion
- Award winning lettings service
- Ahead of the game marketing strategies
- Professional photography
- Social media marketing
- Top listings on Rightmove and Zoopla

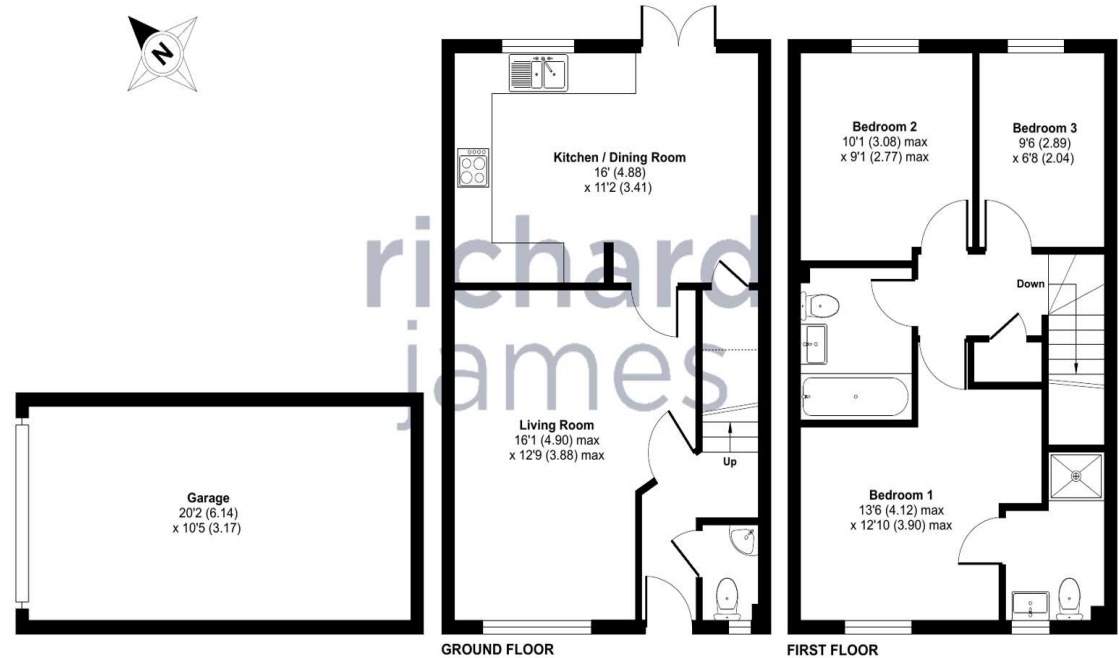
call us for a free
valuation on your property

northswindon@richardjames.uk

Gemini House | Hargreaves Road | SN25 5AZ

Approximate Area = 884 sq ft / 82.1 sq m
Garage = 210 sq ft / 19.5 sq m
Total = 1094 sq ft / 101.6 sq m

For identification only - Not to scale



Floor plan produced in accordance with RICS Property Measurement Standards incorporating International Property Measurement Standards (IPMS2 Residential). ©richardjames 2024. Produced for Richard James. REF: 1197126

Richard James & their clients give notice that:

1. These sales and particulars do not constitute any part of an offer of contract, and are for the guidance of prospective purchasers only and should not be relied on as statements of fact.
2. No representations are made in these particulars as to the condition of the property or as to whether any service or facilities are in good working order.
3. All Measurements are approximate.

rightmove