



Tunnicliffe Close, Marlborough Park

Offers over £180,000

richard james

richard
james



Tunnickliffe Close

Marlborough Park

Leasehold



Property Description

****NO ONWARD CHAIN!**TWO BALCONIES!****

Introducing this stylish upper floor apartment boasting a contemporary design and high-quality finishes. This two-bedroom property offers a comfortable living space with a spacious balcony, perfect for enjoying a morning coffee or evening sunset. The apartment also benefits from off-street parking, providing convenience for residents.

The interior features a modern open-plan layout, creating a bright and airy atmosphere throughout. The kitchen is fitted with sleek appliances and ample storage space, ideal for cooking and entertaining. The bedrooms are well-proportioned with large windows allowing plenty of natural light. The living space also benefits from a large balcony area!

Located in a sought-after area, this apartment offers easy access to local amenities, transport links, and green spaces. Whether you're a first-time buyer, downsizer, or investor, this property presents a fantastic opportunity to own a modern home in a desirable location. Contact us today to arrange a viewing and secure your new home!

Service charge - tbc

Ground rent - tbc

Lease length remaining - 111 years

EPC - B

Council tax - C

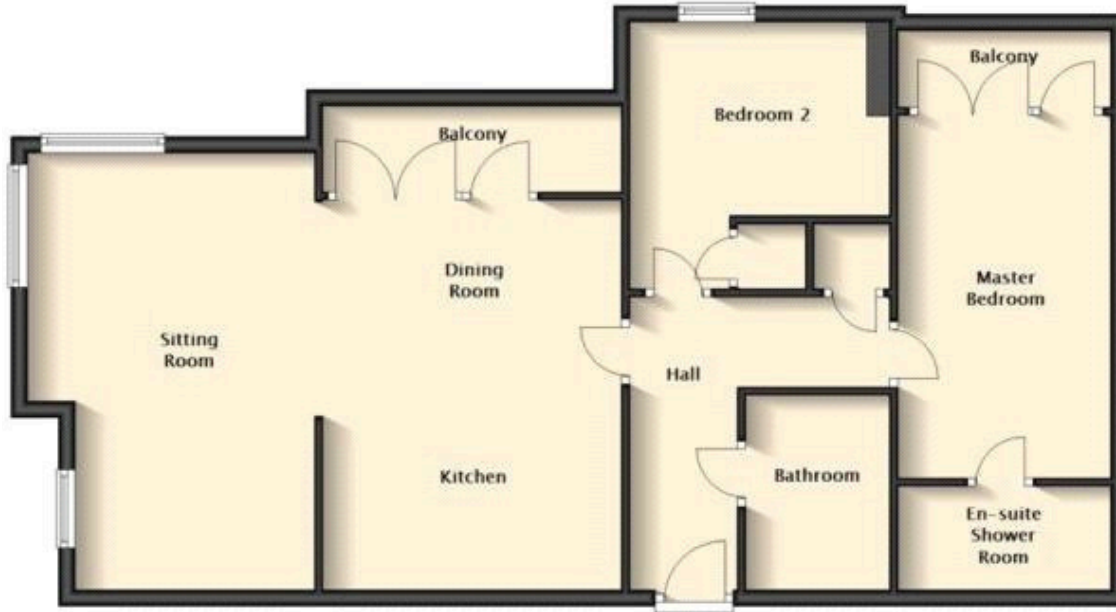




Floorplan

Property Layout

Approx. 80.8 sq. metres (869.4 sq. feet)



Total area: approx. 80.8 sq. metres (869.4 sq. feet)

Richard James & their clients give notice that:

1. These sales and particulars do not constitute any part of an offer of contract, and are for the guidance of prospective purchasers only and should not be relied on as statements of fact.
2. No representations are made in these particulars as to the condition of the property or as to whether any service or facilities are in good working order.
3. All Measurements are approximate.

Exceptional Service

Our team will guide you through the process of buying or selling your home.

We have a team of dedicated sales progressors in place to ensure your purchase or sale runs smoothly through to completion, keeping you in the loop and a close eye on your chain, while moving you in as swiftly and smoothly as possible.

- Honest valuations in current marketing conditions
- Dedicated sales progression team
- Recommended financial advisors
- 5* service from valuation to completion
- Award winning lettings service
- Ahead of the game marketing strategies
- Professional photography
- Social Media marketing
- Top listings on Rightmove, Zoopla and Boomin

Richard James Apartments & Investments

01793 688 708

apartments@richardjames.uk

Gemini House | Hargreaves Road | Swindon | SN25 5AZ

richard james

richardjames.uk