



Cowleaze, Ridgeway Farm

Offers £155,000

richard james

richard
james



Cowleaze

Ridgeway Farm

Leasehold



Property Description

****STUNNING FIRST FLOOR APARTMENT WITH TWO PARKING SPACES!!****

Located in the heart of Ridgeway Farm, this modern first-floor apartment offers the perfect blend of contemporary living and convenience.

The well-appointed property features one spacious bedroom, ideal for a single professional or couple seeking a stylish urban retreat.

The apartment boasts a sleek open-plan living area, flooded with natural light, creating a welcoming space for relaxation and entertaining.

The modern kitchen is equipped with high-quality appliances, perfect for whipping up delicious meals.

Residents will benefit from TWO off-street parking spaces, providing added convenience in this central location. With its prime position close to local amenities, shops, and transport links, this property offers the ideal opportunity for first time buyers!

Don't miss out on the chance to make this stylish apartment your new home. Contact us today to arrange a viewing!

Ground Rent: £150 pa
Service Charge: £2300 pa
Estate service charge: £195 pa
Lease length remaining - 118 years
EPC - B
Council tax - B



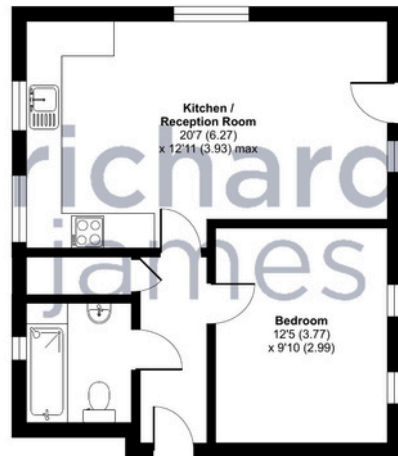




richard
james

Floorplan

Approximate Area = 492 sq ft / 45.6 sq m
For identification only - Not to scale



FIRST FLOOR

 Floor plan produced in accordance with RICS Property Measurement Standards incorporating International Property Measurement Standards (IPMS2 Residential). © rjchecon 2024. Produced for Richard James. REF: 1193208

Richard James & their clients give notice that:

1. These sales and particulars do not constitute any part of an offer of contract, and are for the guidance of prospective purchasers only and should not be relied on as statements of fact.
2. No representations are made in these particulars as to the condition of the property or as to whether any service or facilities are in good working order.
3. All Measurements are approximate.

Exceptional Service

Our team will guide you through the process of buying or selling your home.

We have a team of dedicated sales progressors in place to ensure your purchase or sale runs smoothly through to completion, keeping you in the loop and a close eye on your chain, while moving you in as swiftly and smoothly as possible.

- Honest valuations in current marketing conditions
- Dedicated sales progression team
- Recommended financial advisors
- 5* service from valuation to completion
- Award winning lettings service
- Ahead of the game marketing strategies
- Professional photography
- Social Media marketing
- Top listings on Rightmove, Zoopla and Boomin

Richard James Apartments & Investments

01793 688 708

apartments@richardjames.uk

Gemini House | Hargreaves Road | Swindon | SN25 5AZ

richard james

richardjames.uk