



Vale Farm, Royal Wootton Bassett, SN4 7QS

richard james

Village & Country Homes



Vale Farm

Royal Wootton Bassett

Freehold | EPC Rating - F



This 10-acre mixed-use property in Royal Wootton Bassett offers a unique blend of residential and commercial opportunities. At the heart of the estate is a five-bedroom detached home, perfect for a family looking for spacious countryside living.

In addition to the house, the property includes several large barns that have commercial permission that are ideal for a range of uses, such as offices, workshops, or storage facilities.

Strategically located, the property is ideal for commuters, with easy access to major transport routes, making travel to nearby towns and cities convenient. The spacious land provides additional potential for further development, expansion, or even agricultural use, offering diverse possibilities for both personal and commercial ventures.

The property's combination of living and business space in a scenic, tranquil setting creates an ideal investment for those looking to balance work and lifestyle or explore new business opportunities.

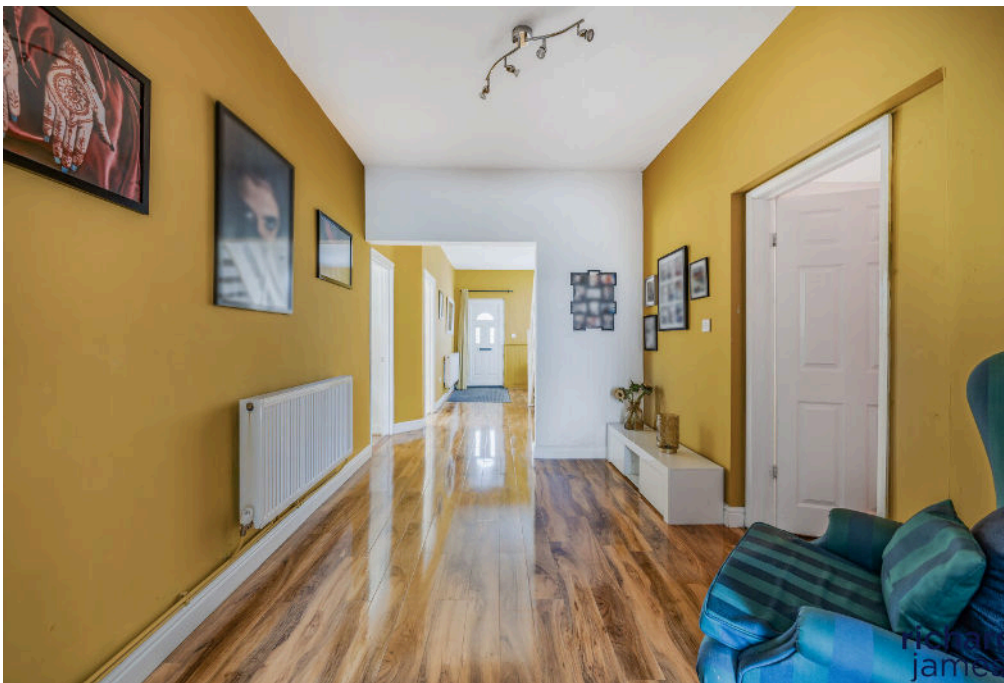




This makes the site perfect for business owners, entrepreneurs, or those looking to manage a small business from home.

The layout also allows for flexibility, making it suitable for a variety of industries.





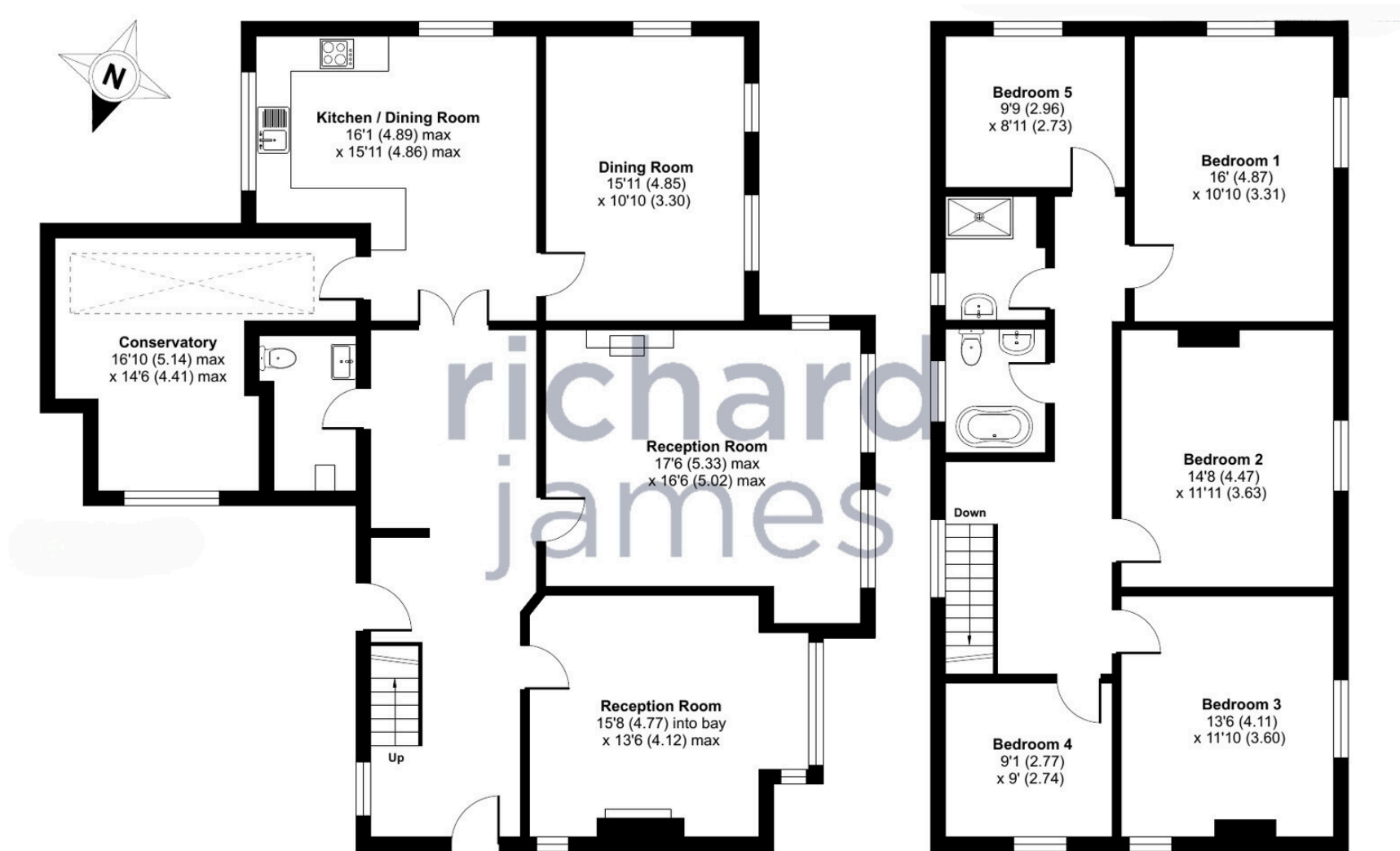






richard
james

Floorplan



01793 814 542

wroughton@richardjames.uk

80 High Street | Wroughton | SN4 9JZ

richard james

richardjames.uk