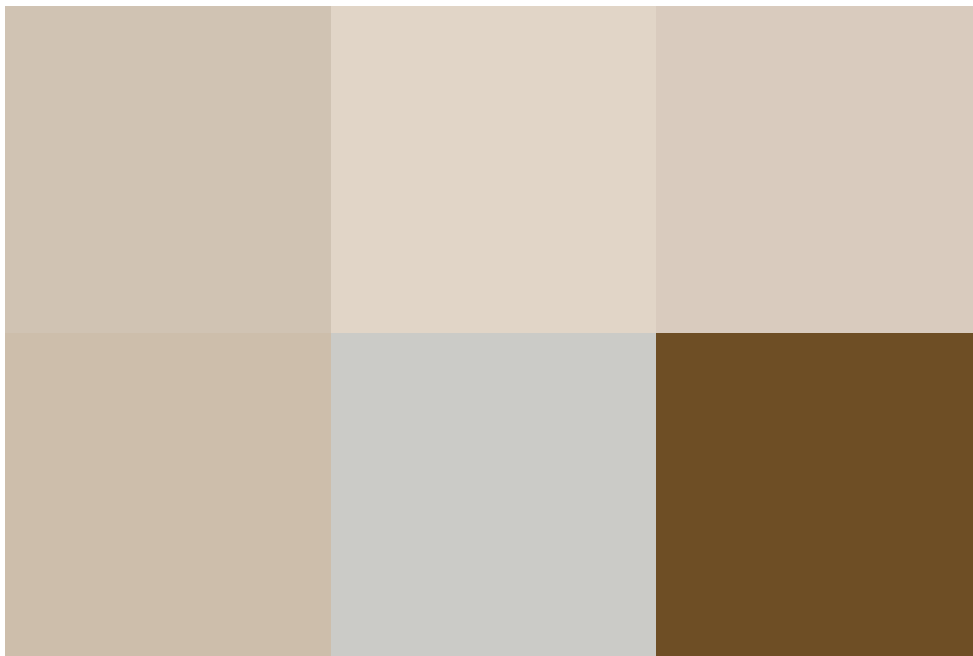


Cricklade Road, Swindon, SN2 5AA

guide price **£270,000-£280,000**



freehold energy
efficiency rating

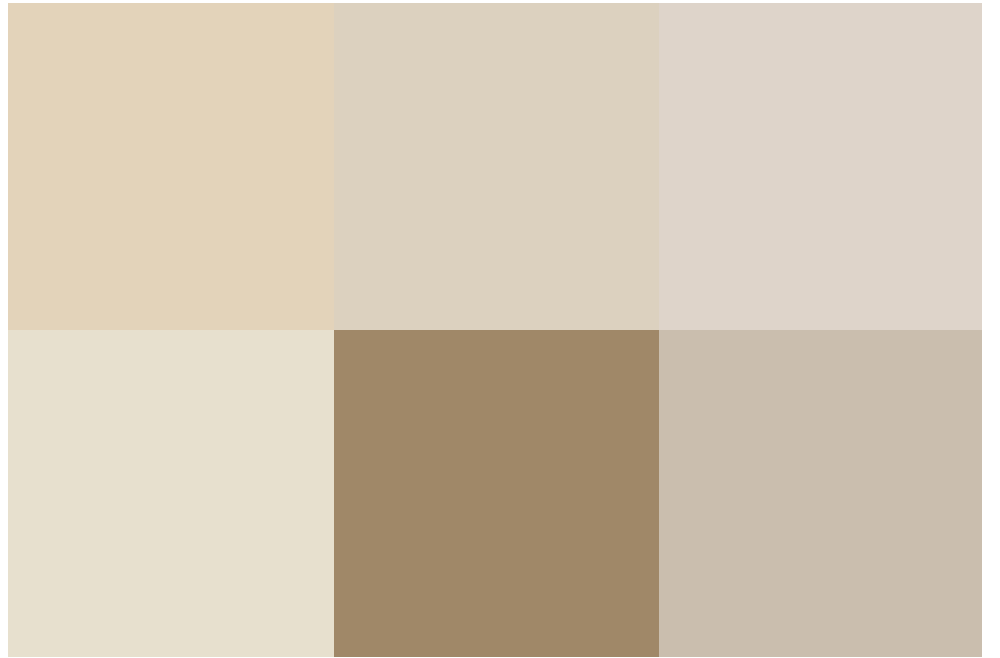
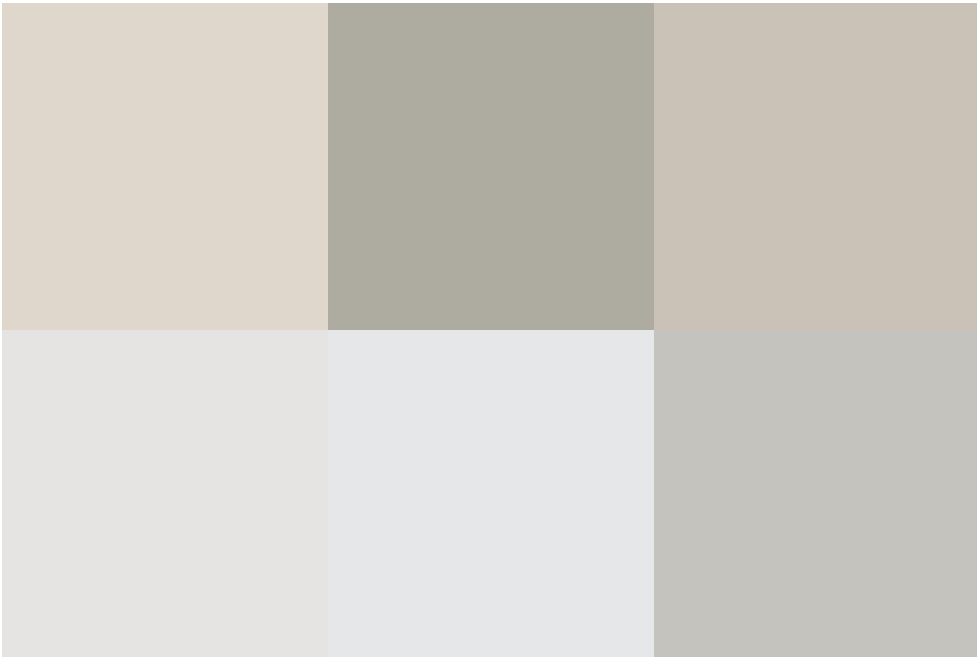
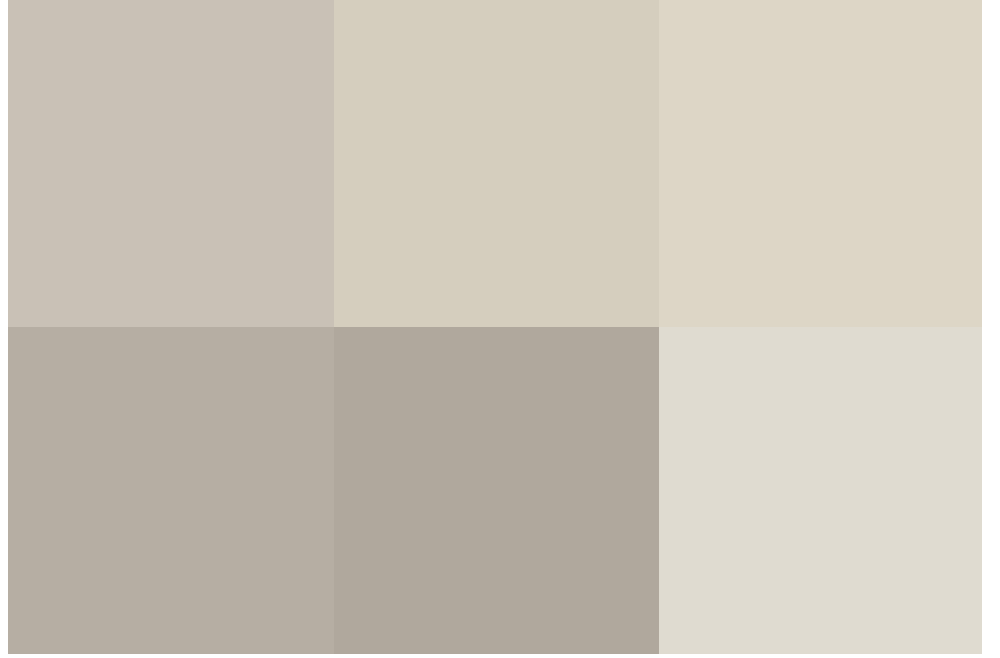
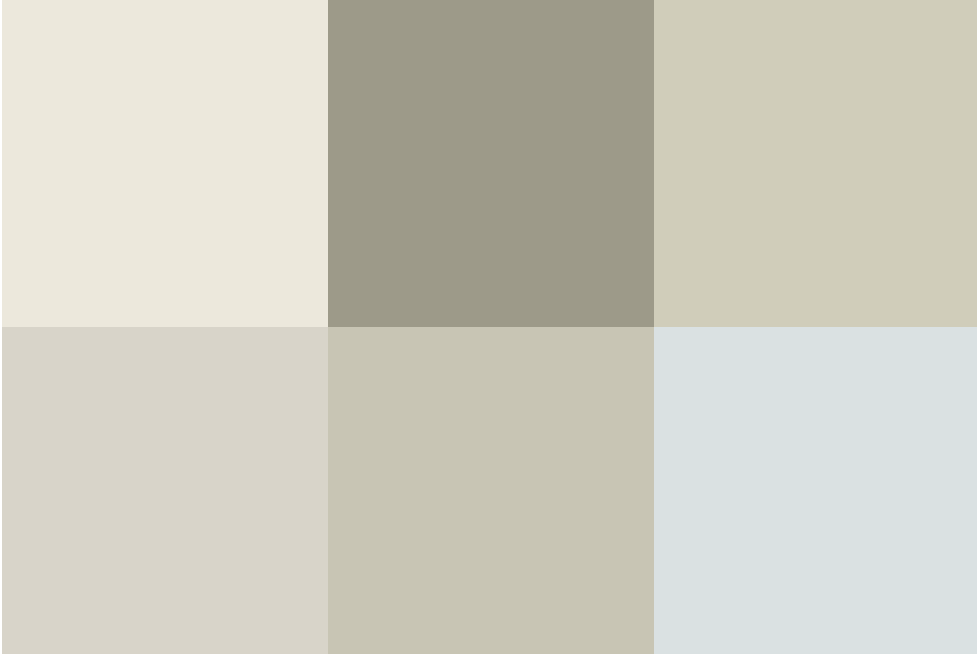
E

A well presented, traditional bay fronted semi-detached house, conveniently Sold Free of Chain! Situated close to all local amenities on the Clive Parade, including supermarket. The property also features a good size enclosed Rear Garden, with a private and pleasant Westerly aspect.

This spacious family home, offers potential for further extension (stp) and consists of; Porch, Hall, Sitting Room with bay window, Dining Room and extended fitted Kitchen with access the rear garden. To the first floor, there are the Three Bedrooms and Family Bathroom, with white suite.

Further features include the enclosed Rear Garden, laid predominantly to Lawn, Driveway Parking which extends to the side, PVCu Double Glazing and Gas Radiator Heating.

Council Tax Band: C



exceptional service

Our team will guide you through the process of buying or selling your home.

We have a team of dedicated sales progressors in place to ensure your purchase or sale runs smoothly through to completion, keeping you in the loop and a close eye on your chain while moving you in as swiftly and smoothly as possible.

- Honest valuations in current market conditions
- Dedicated sales progression team
- Recommended financial advisors
- 5* service from valuation to completion
- Award winning lettings service
- Ahead of the game marketing strategies
- Professional photography
- Social media marketing
- Top listings on Rightmove and Zoopla

call us for a free
valuation on your
property

oldtown@richardjames.uk

Victoria Road | Old Town | SN1 3BD

Richard James & their clients give notice that:

1. These sales and particulars do not constitute any part of an offer of contract, and are for the guidance of prospective purchasers only and should not be relied on as statements of fact.
2. No representations are made in these particulars as to the condition of the property or as to whether any service or facilities are in good working order.
3. All Measurements are approximate.

