



De Morgan Crescent, Tadole Garden Village, SN25 2PZ

offers over **£275,000**

**richard
james**



 2  1  1

energy efficiency
rating

B

Offered for sale on this quiet position in Tadpole is a two bedroom semi-detached home. The property is in great condition throughout and comprises; entrance, kitchen, a brilliant sized kitchen/diner with patio doors onto the rear garden. On the first floor you'll find two great sized, double bedrooms along with the family bathroom. At the rear you'll find a low maintenance garden, laid mostly with decking and patio spaces. The property is complete with allocated parking. There are both primary and secondary schools within walking distance to this great home. Call us today to book your viewing.

EPC REGISTER: B
COUNCIL TAX BAND: C



exceptional service

Our team will guide you through the process of buying or selling your home.

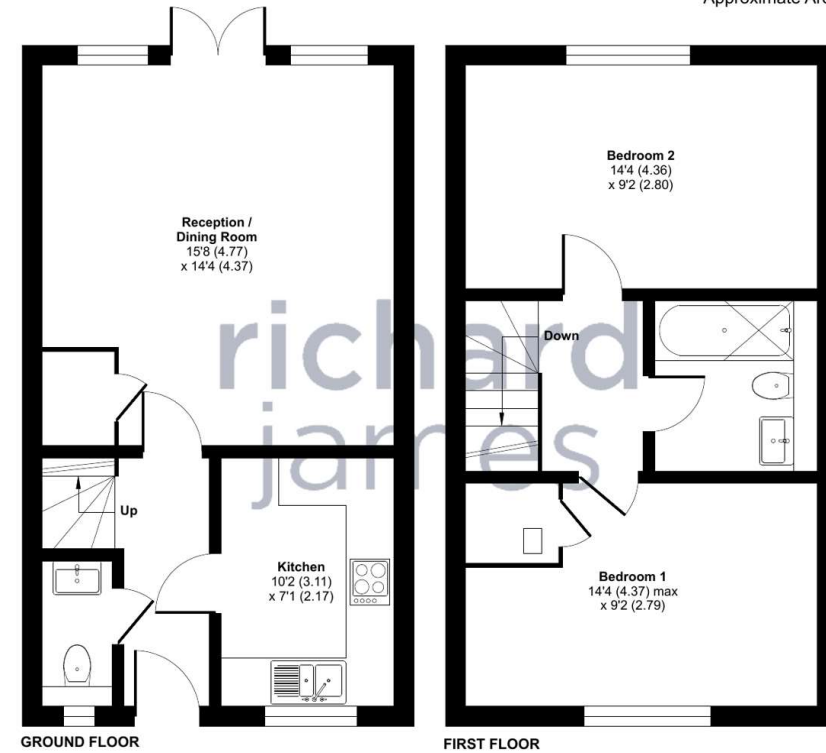
We have a team of dedicated sales progressors in place to ensure your purchase or sale runs smoothly through to completion, keeping you in the loop and a close eye on your chain while moving you in as swiftly and smoothly as possible.

- Honest valuations in current market conditions
- Dedicated sales progression team
- Recommended financial advisors
- 5* service from valuation to completion
- Award winning lettings service
- Ahead of the game marketing strategies
- Professional photography
- Social media marketing
- Top listings on Rightmove and Zoopla

call us for a free
valuation on your
property

northswindon@richardjames.uk

Gemini House | Hargreaves Road | SN25 5AZ



Floor plan produced in accordance with RICS Property Measurement Standards incorporating International Property Measurement Standards (IPMS2 Residential). © richcom 2024. Produced for Richard James. REF: 1189855

Richard James & their clients give notice that:

1. These sales and particulars do not constitute any part of an offer of contract, and are for the guidance of prospective purchasers only and should not be relied on as statements of fact.
2. No representations are made in these particulars as to the condition of the property or as to whether any service or facilities are in good working order.
3. All Measurements are approximate.

rightmove