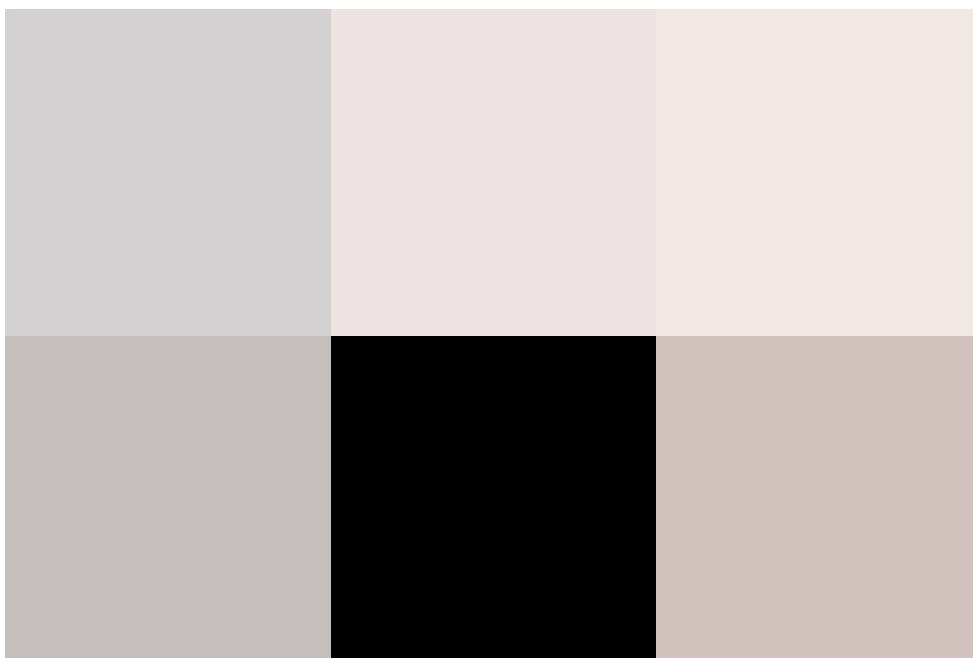
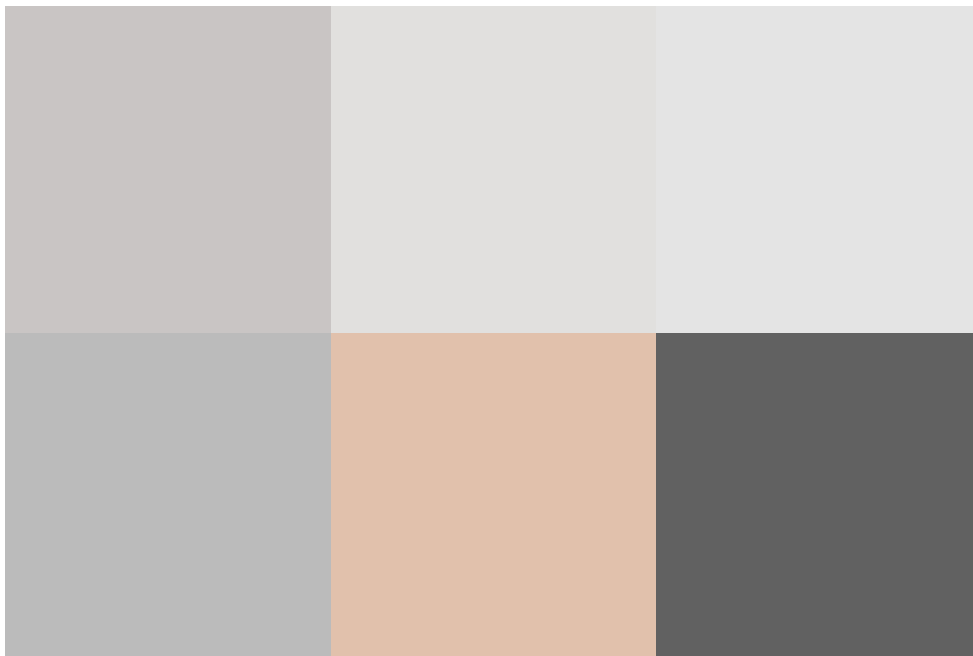


Boundary Close, Stratton, SN2 7TG

asking price **£275,000**



THREE DOUBLE BEDROOMS - POTENTIAL TO PUT YOUR OWN STAMP ON THINGS - MODERN BATHROOM - STRATTON - DRIVEWAY PARKING

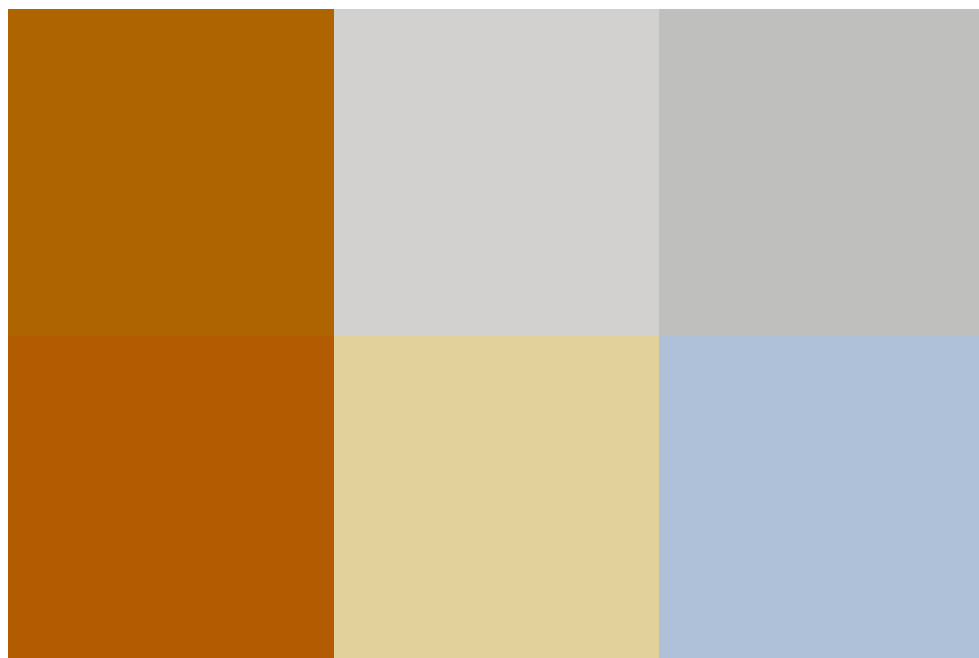
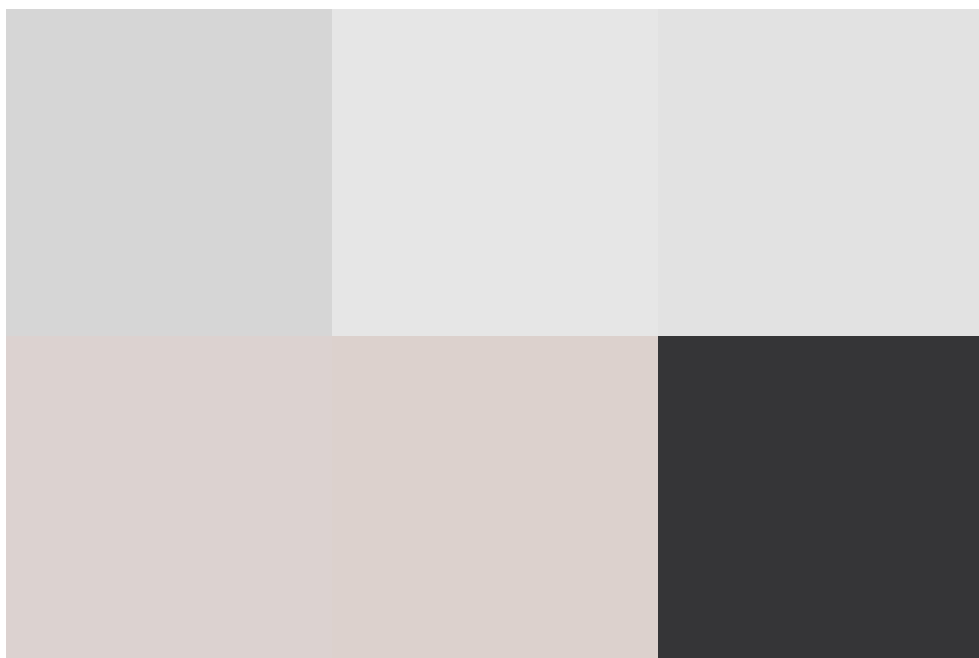
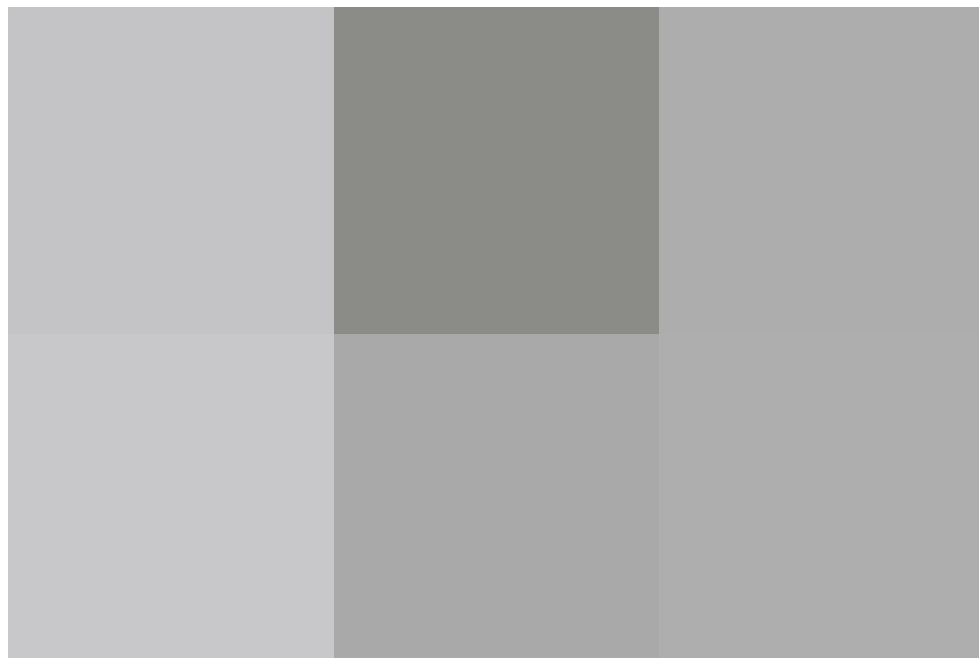
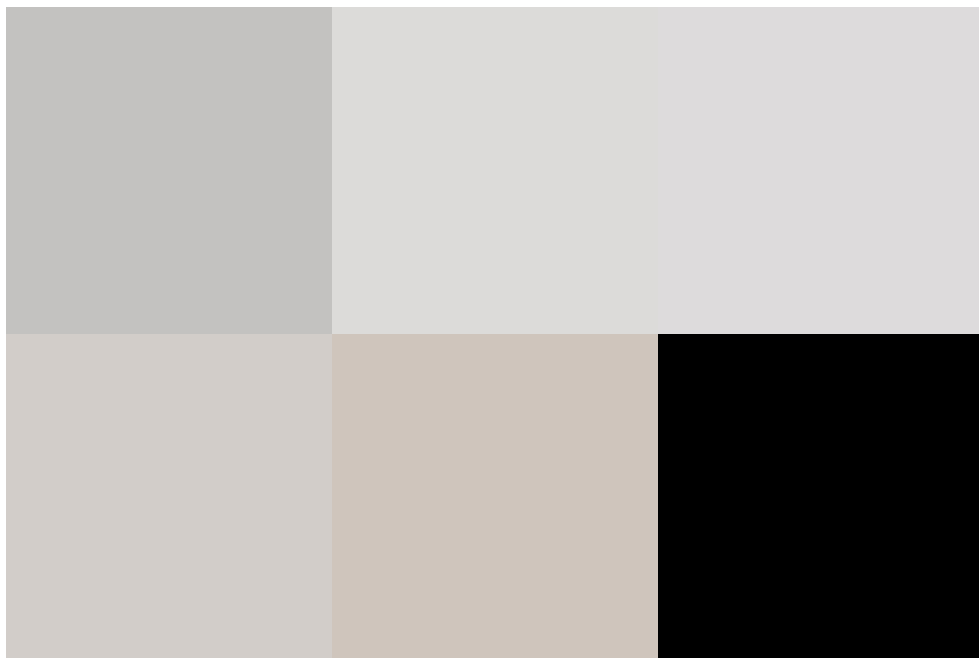
This is a fantastic opportunity to purchase this three bedroom detached home in Stratton. The home has been updated but still needs a few things to be completed.

The property is open plan downstairs and has had part of the garage converted to make an extra living space. There are doors leading to the garden allowing natural light into the home. There is also an added bonus of underfloor heating downstairs.

Upstairs offers three bedrooms, all of which are double in size and would be perfect for a family.

Externally you have driveway parking, garden to the rear which needs some TLC.

Located close to amenities, schools and transport links we highly recommend a viewing to see whats to offer.



## exceptional service

Our team will guide you through the process of buying or selling your home.

We have a team of dedicated sales progressors in place to ensure your purchase or sale runs smoothly through to completion, keeping you in the loop and a close eye on your chain while moving you in as swiftly and smoothly as possible.

- Honest valuations in current market conditions
- Dedicated sales progression team
- Recommended financial advisors
- 5\* service from valuation to completion
- Award winning lettings service
- Ahead of the game marketing strategies
- Professional photography
- Social media marketing
- Top listings on Rightmove and Zoopla

---

call us for a free  
valuation on your  
property

---

[eastswindon@richardjames.uk](mailto:eastswindon@richardjames.uk)

Grange Drive | Stratton | SN3 4LA

### Richard James & their clients give notice that:

1. These sales and particulars do not constitute any part of an offer of contract, and are for the guidance of prospective purchasers only and should not be relied on as statements of fact.
2. No representations are made in these particulars as to the condition of the property or as to whether any service or facilities are in good working order.
3. All Measurements are approximate.

