



Dauntsey House

Offers over £130,000

richard james



Dauntsey House

Bentham Close

Leasehold



****MOTIVATED VENDORS!!**New windows paid for and due to be fitted!!****

Introducing this modern ground floor apartment, boasting a stylish design and excellent amenities.

This property features a spacious bedroom, perfect for relaxation after a long day.

The apartment also offers a private garden, ideal for enjoying outdoor activities and hosting gatherings. Additionally, the convenience of off-street parking ensures hassle-free access for residents and guests.

Situated in a desirable location, this apartment provides easy access to local amenities, schools, and transport links. With its contemporary features and functional layout, this property presents a fantastic opportunity for those seeking a comfortable and convenient living space.

Don't miss the chance to make this modern ground floor apartment your new home. Contact us today to arrange a viewing and experience the charm of this property firsthand!

Service charge - £1380.92 pa
Ground rent - £200 pa
Lease length remaining - 988 years
EPC - D
Council tax - A

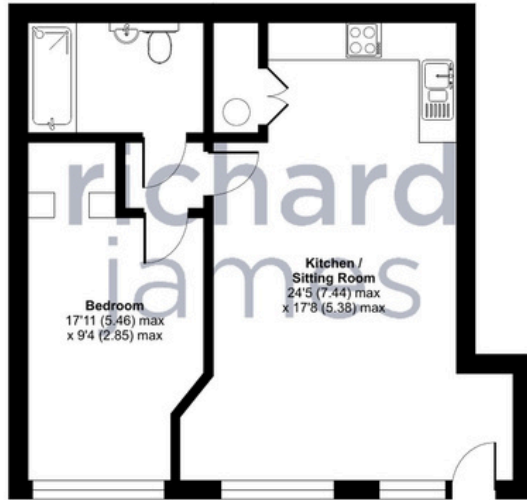







Floorplan

Approximate Area = 568 sq ft / 52.8 sq m
For identification only - Not to scale



GROUND FLOOR

 Floor plan produced in accordance with RICS Property Measurement Standards incorporating International Property Measurement Standards (IPMS2 Residential). © rnzecom 2024. Produced for Richard James. REF: 1180149

Richard James & their clients give notice that:

1. These sales and particulars do not constitute any part of an offer of contract, and are for the guidance of prospective purchasers only and should not be relied on as statements of fact.
2. No representations are made in these particulars as to the condition of the property or as to whether any service or facilities are in good working order.
3. All Measurements are approximate.

Exceptional Service

Our team will guide you through the process of buying or selling your home.

We have a team of dedicated sales progressors in place to ensure your purchase or sale runs smoothly through to completion, keeping you in the loop and a close eye on your chain, while moving you in as swiftly and smoothly as possible.

- Honest valuations in current marketing conditions
- Dedicated sales progression team
- Recommended financial advisors
- 5* service from valuation to completion
- Award winning lettings service
- Ahead of the game marketing strategies
- Professional photography
- Social Media marketing
- Top listings on Rightmove, Zoopla and Boomin

Richard James Apartments & Investments

01793 688 708

apartments@richardjames.uk

Gemini House | Hargreaves Road | Swindon | SN25 5AZ

richard james

richardjames.uk