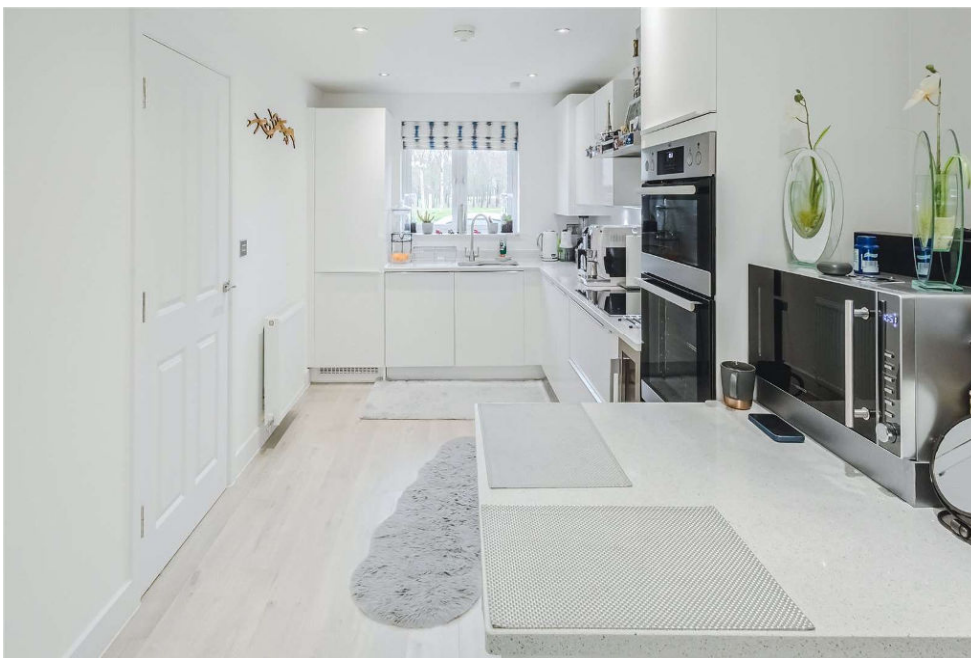




The Leasowes, Tadpole Garden Village, SN25 2RS

offers over **£500,000**

**richard  
james**



## freehold

A stunning four bedroom, detached family home - offered for sale on the esteemed "The Stray" in Tadpole Garden Village.

The property is in excellent condition throughout, with ample accommodation split over three brilliant sized floors. The ground floor offers a circa 33ft, open plan kitchen/family room with patio doors onto the rear garden.

The ground floor is complete with WC. Rising to the first floor you'll find two of the four bedrooms, the family bathroom and a great sized sitting room with access onto the outside terrace which sits above the garage - an ideal spot to enjoy the outdoors. with great views.

The top floor is just as impressive, with two double bedrooms, both complete with fitted wardrobes and an ensuite shower rooms.

The rear garden is a fantastic size, laid with plenty of turf and patio - all enjoying a south facing orientation. Garage and driveway parking to the front complete this amazing home.

Call us today to book your viewing.



















## exceptional service

Our team will guide you through the process of buying or selling your home.

We have a team of dedicated sales progressors in place to ensure your purchase or sale runs smoothly through to completion, keeping you in the loop and a close eye on your chain while moving you in as swiftly and smoothly as possible.

- Honest valuations in current market conditions
- Dedicated sales progression team
- Recommended financial advisors
- 5\* service from valuation to completion
- Award winning lettings service
- Ahead of the game marketing strategies
- Professional photography
- Social media marketing
- Top listings on Rightmove and Zoopla

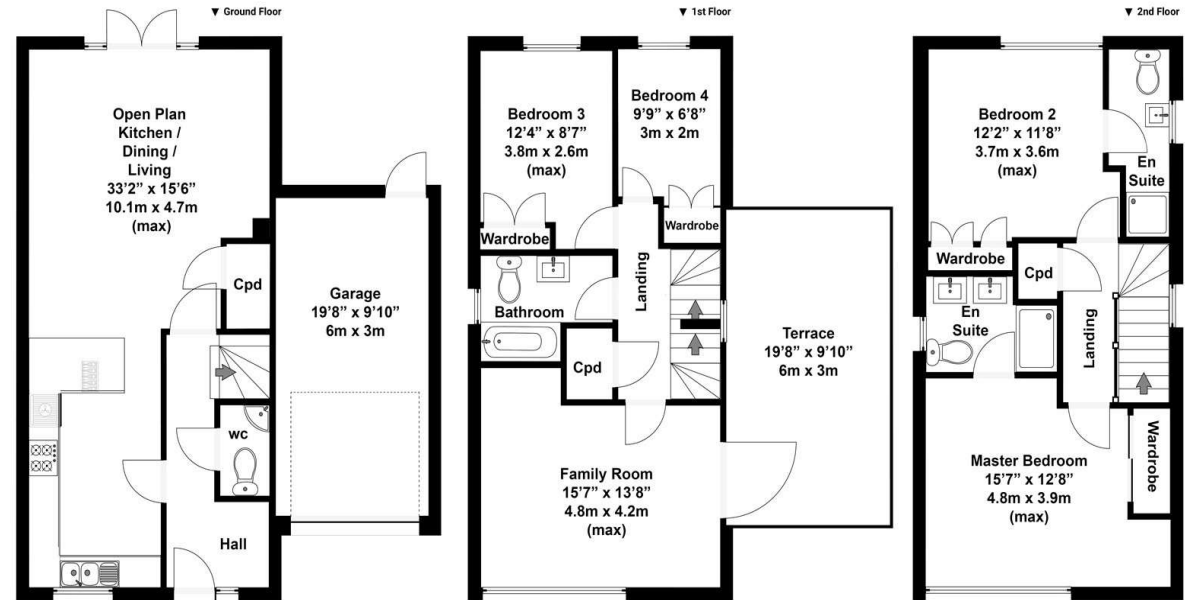
---

call us for a free  
valuation on your property

---

[northswindon@richardjames.uk](mailto:northswindon@richardjames.uk)

Gemini House | Hargreaves Road | SN25 5AZ



Total area approx: 1869 sq ft / 174 sq m  
(Includes garage & terrace)

All floor plans are for information only and should not be used as a basis for valuation. Measurements are approximate and should not be relied upon as statements of fact. Please refer to the actual property for details.

### Richard James & their clients give notice that:

1. These sales and particulars do not constitute any part of an offer of contract, and are for the guidance of prospective purchasers only and should not be relied on as statements of fact.
2. No representations are made in these particulars as to the condition of the property or as to whether any service or facilities are in good working order.
3. All Measurements are approximate.

rightmove 