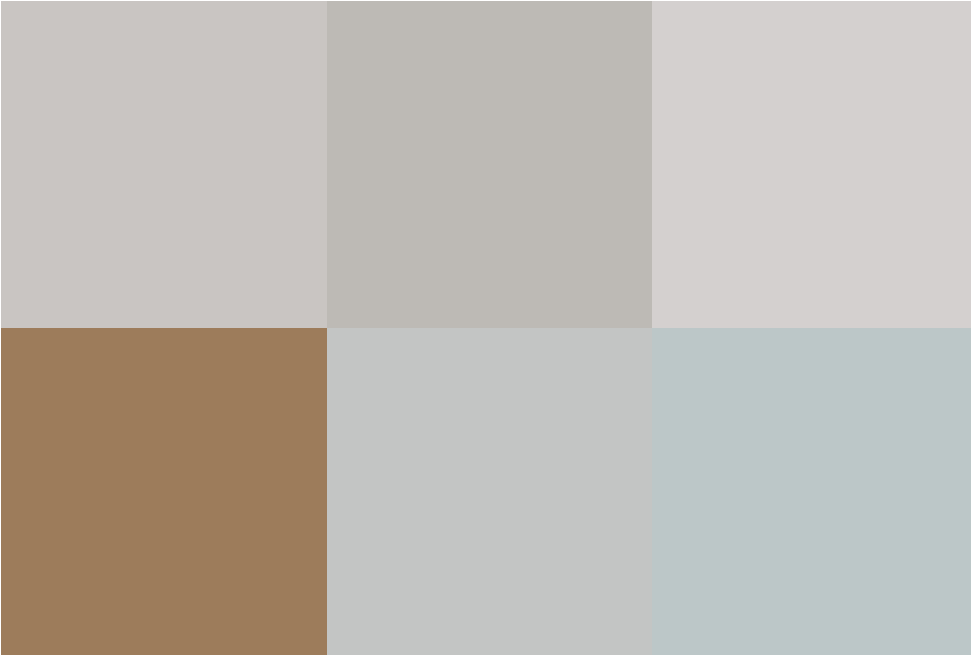


Lumb Close, Tadpole Garden Village, SN25 2UJ

guide price **£475,000 - £500,000**



****GUIDE PRICE £475,000 - £500,000****

Welcome to this beautifully presented four-bedroom detached home, located in the highly sought-after Tadpole Garden Village. This contemporary property offers a perfect blend of style and functionality, ideal for modern family living.

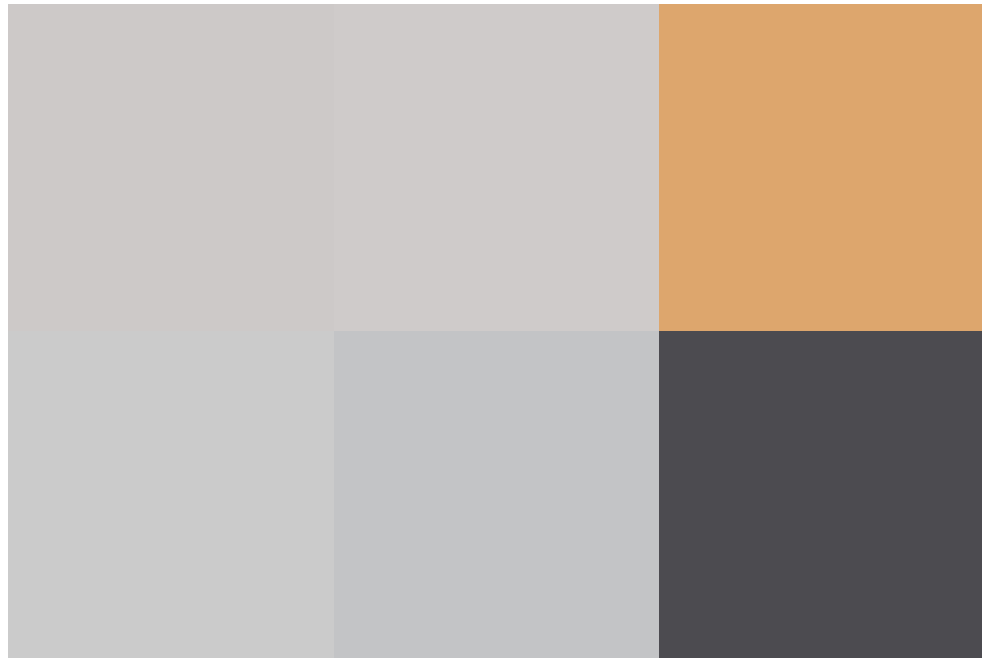
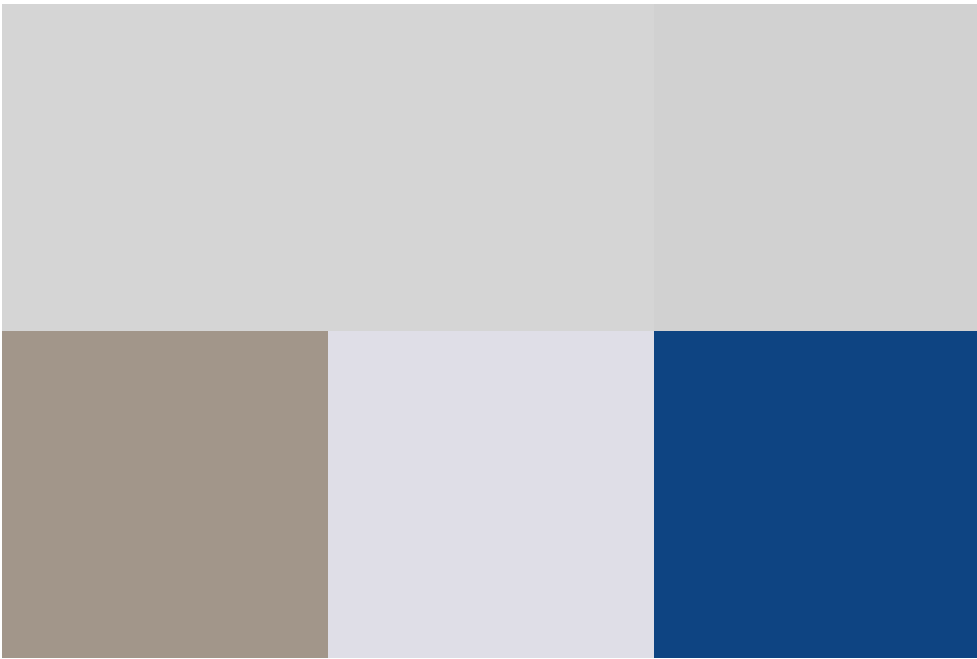
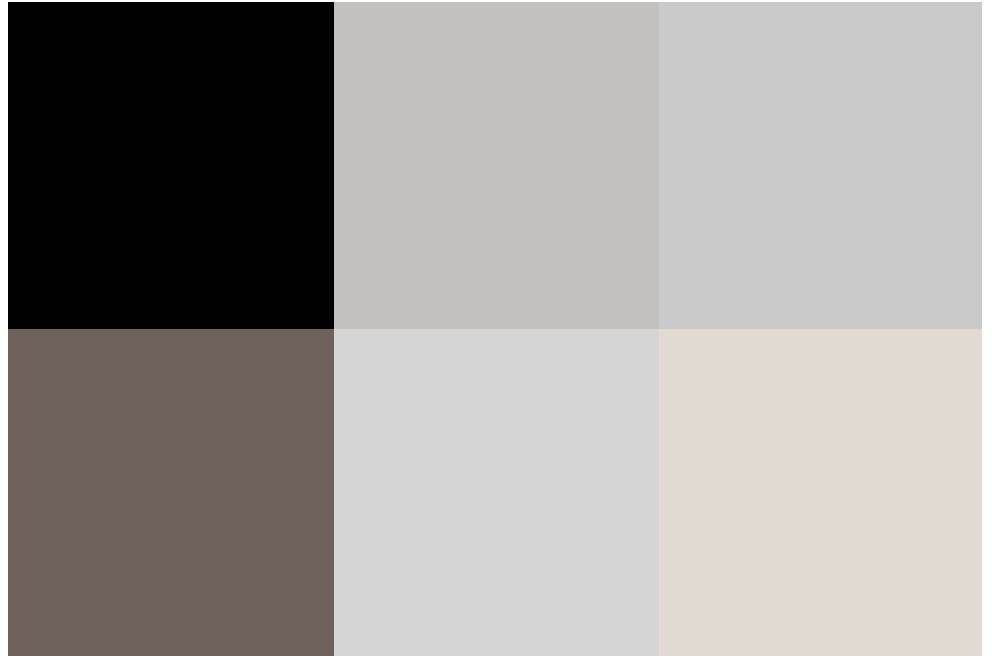
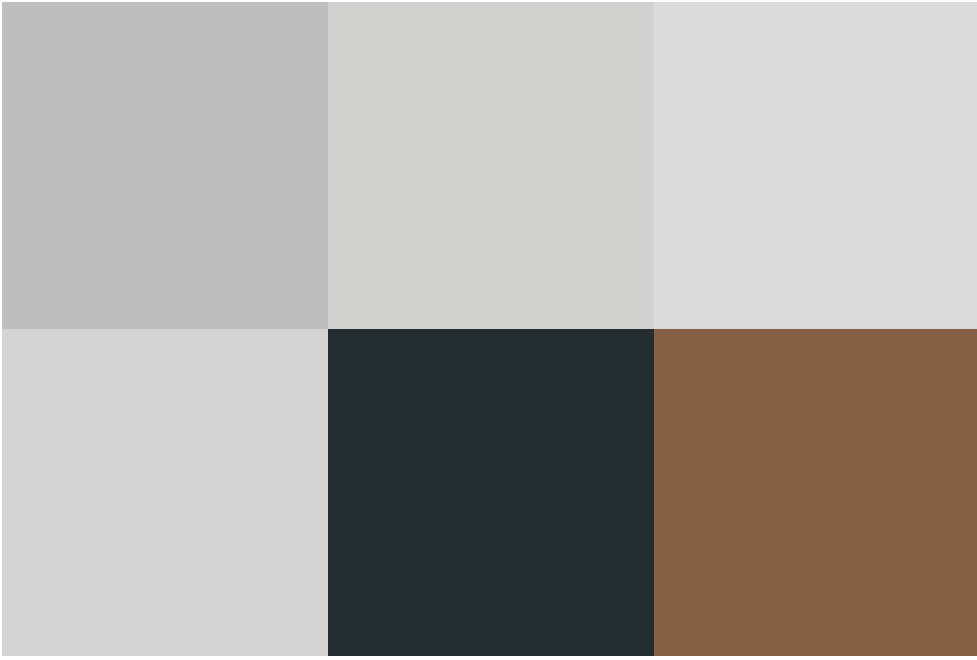
As you step inside, you'll be greeted by a spacious and inviting hallway, with a stunning staircase and tall ceilings that create an immediate sense of space and grandeur. The heart of the home is the impressive kitchen diner, featuring a sleek island that serves as both a functional workspace and a social hub. The kitchen seamlessly flows into a versatile study space, perfect for working from home or as a quiet reading nook. Adjacent to this, you'll find the large lounge, designed for comfort and relaxation, complete with a media wall that adds a touch of luxury to your entertainment experience.

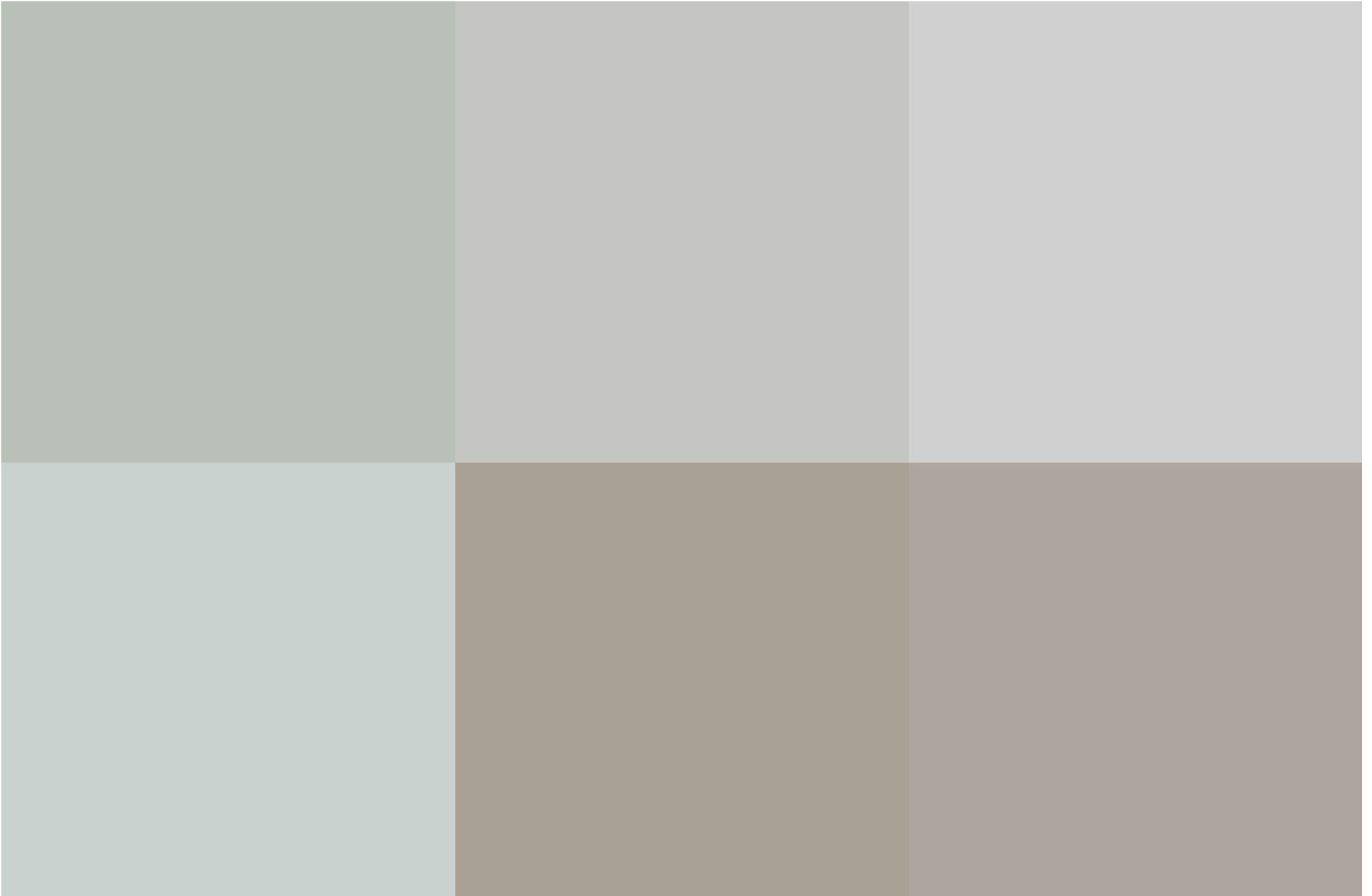
Upstairs, the property boasts four generously sized bedrooms, each thoughtfully designed with feature full length windows. The master bedroom is a true retreat, complete with a stylish ensuite bathroom, offering a perfect space to unwind after a long day. The remaining bedrooms are also well-proportioned, providing ample space for family and guests.

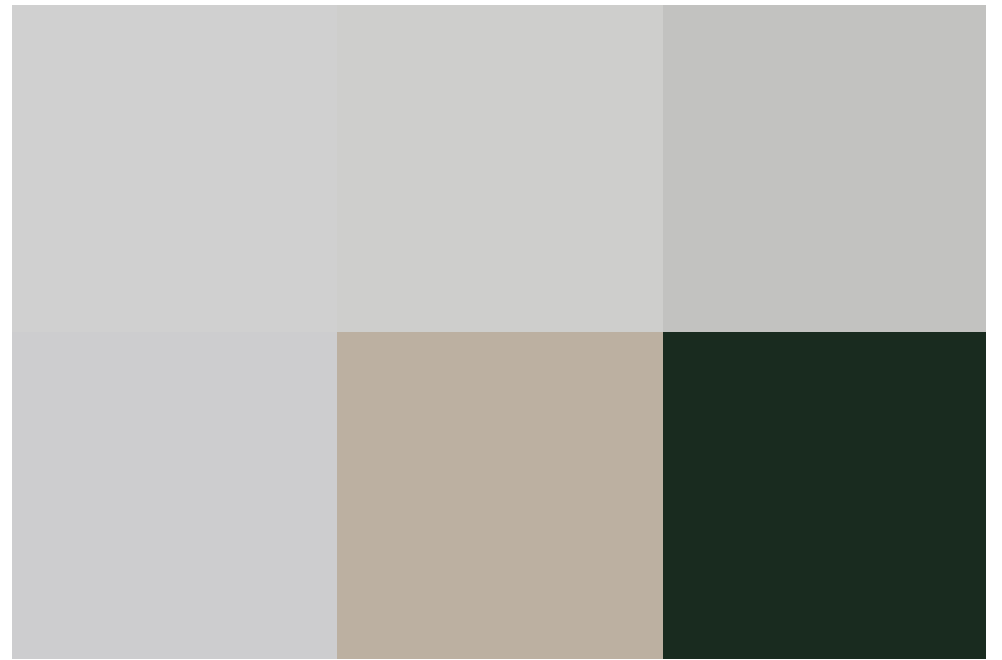
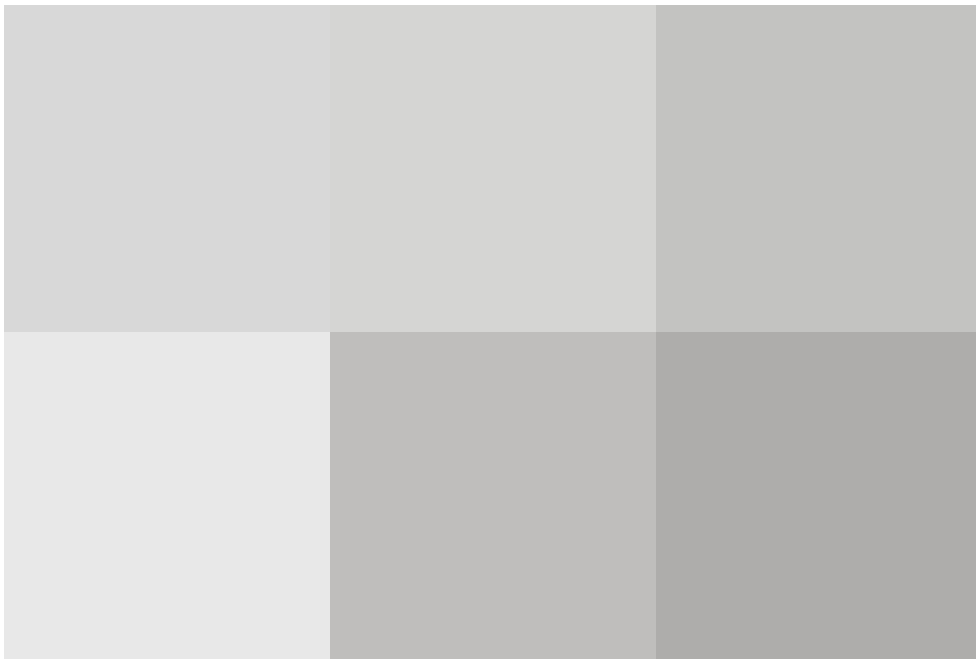
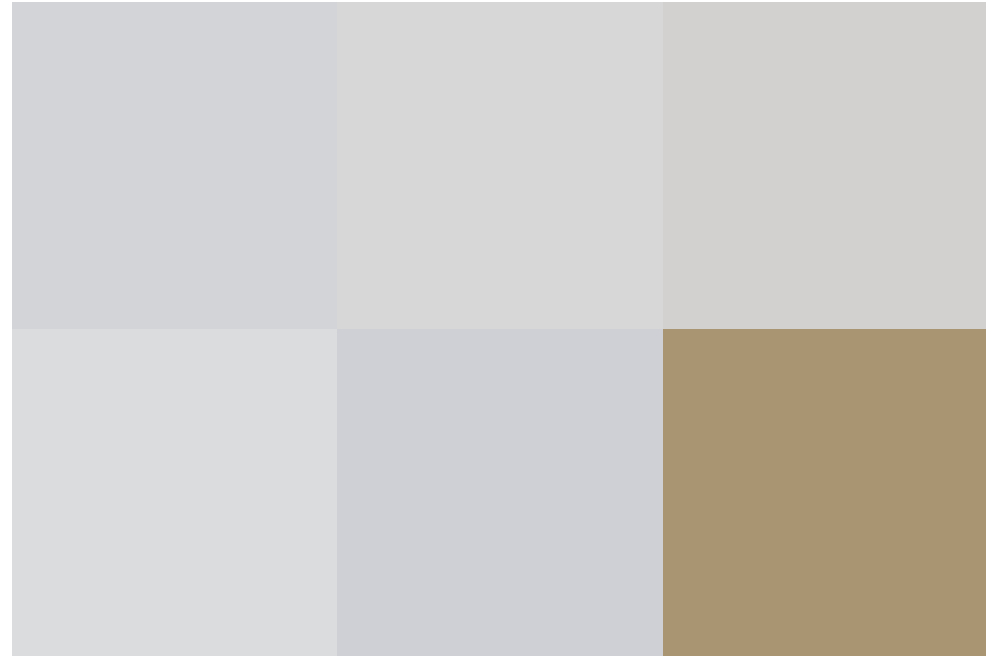
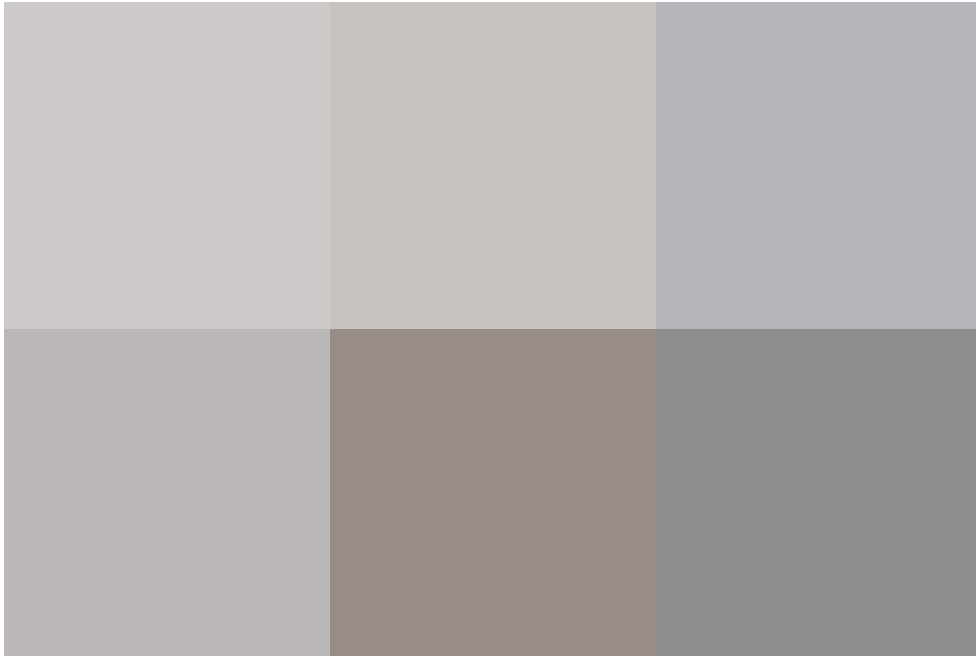
The exterior of this home is equally impressive, with a beautifully landscaped garden that offers both privacy and a serene outdoor space for dining, entertaining, or simply enjoying the fresh air. Additionally, the property benefits from a garage and ample parking, providing convenience and security.

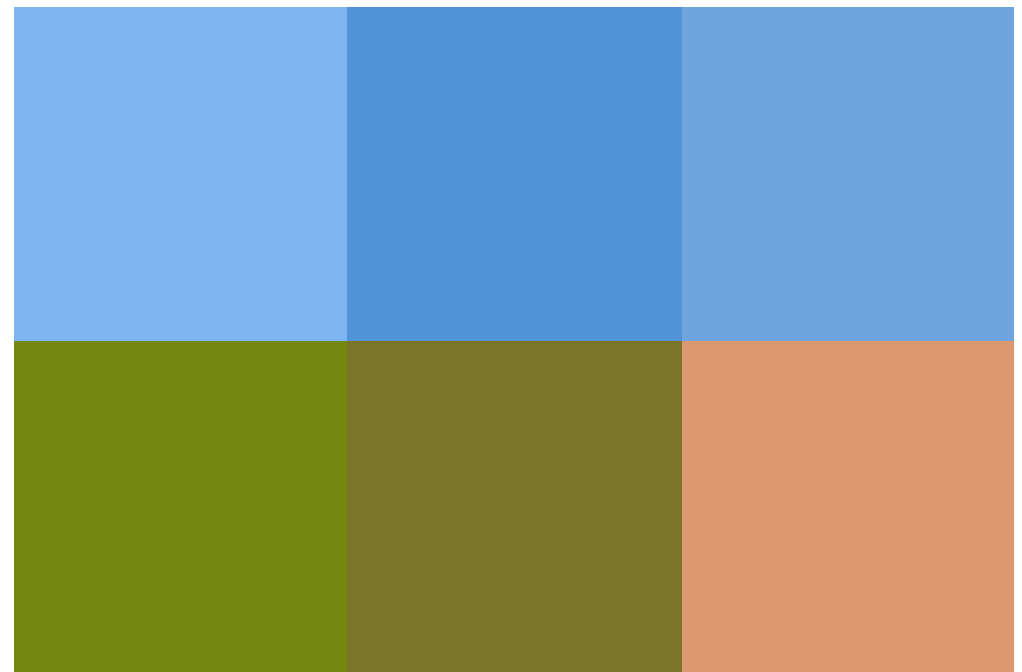
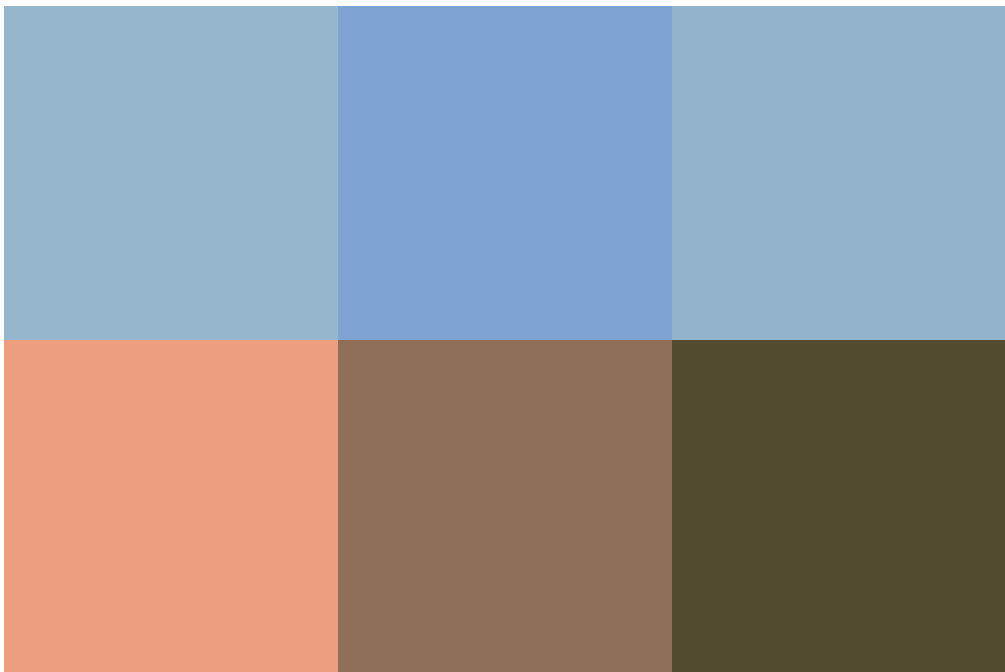
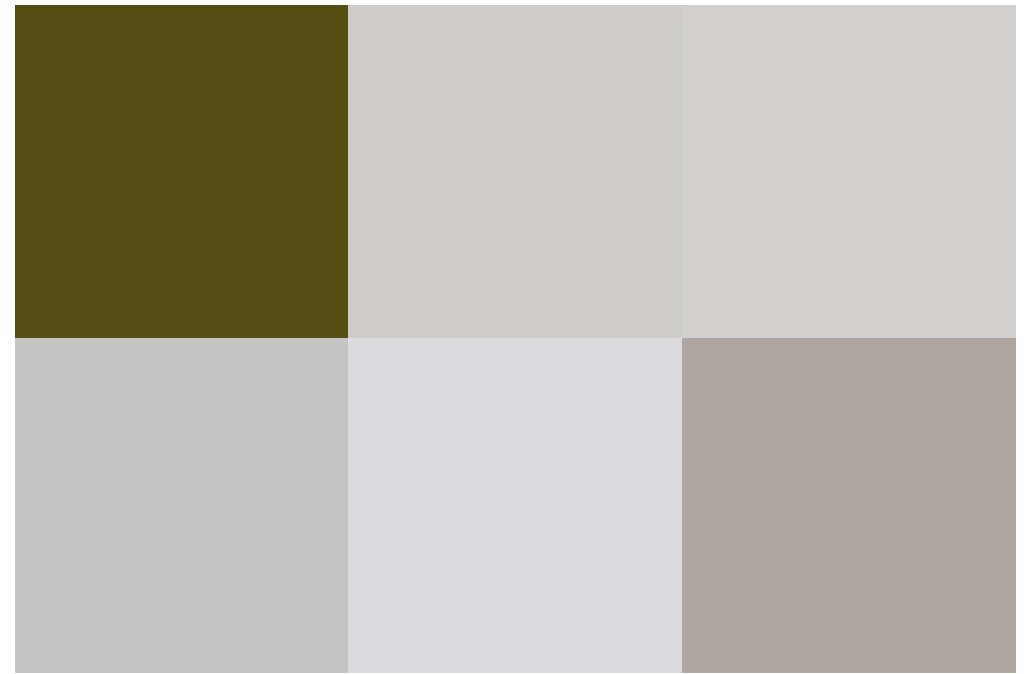
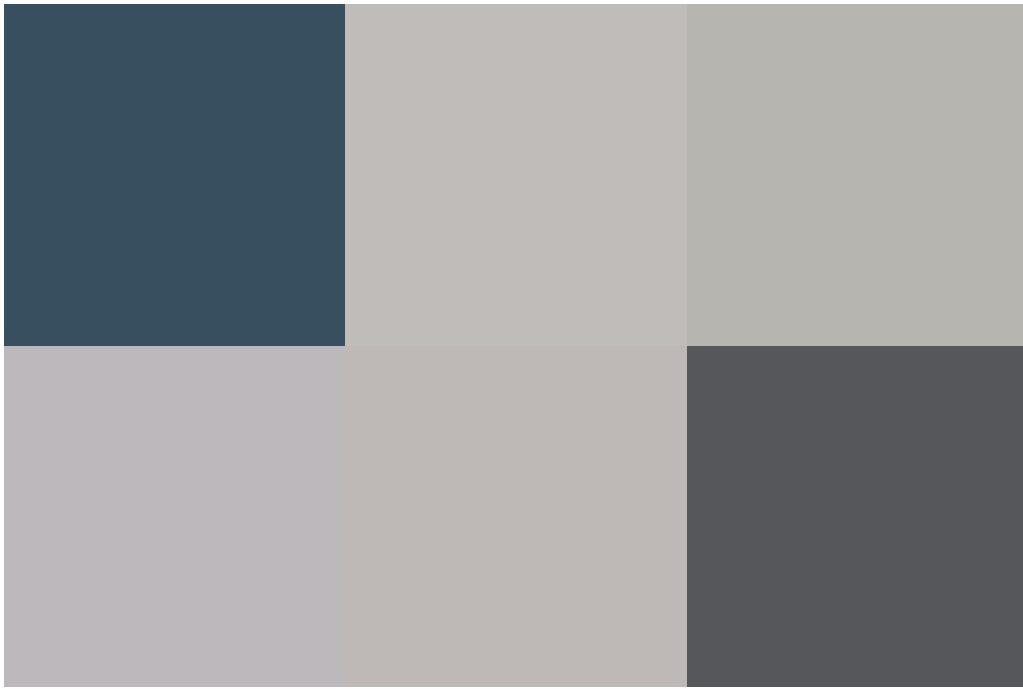
This contemporary home in Tadpole Garden Village truly has it all—style, space, and a location that offers the perfect balance of community living and accessibility. Don't miss the opportunity to make this stunning property your new home.

COUNCIL TAX: F
EPC: B









exceptional service

Our team will guide you through the process of buying or selling your home.

We have a team of dedicated sales progressors in place to ensure your purchase or sale runs smoothly through to completion, keeping you in the loop and a close eye on your chain while moving you in as swiftly and smoothly as possible.

- Honest valuations in current market conditions
- Dedicated sales progression team
- Recommended financial advisors
- 5* service from valuation to completion
- Award winning lettings service
- Ahead of the game marketing strategies
- Professional photography
- Social media marketing
- Top listings on Rightmove and Zoopla

call us for a free
valuation on your property

northswindon@richardjames.uk

Gemini House | Hargreaves Road | SN25 5AZ

Richard James & their clients give notice that:

1. These sales and particulars do not constitute any part of an offer of contract, and are for the guidance of prospective purchasers only and should not be relied on as statements of fact.
2. No representations are made in these particulars as to the condition of the property or as to whether any service or facilities are in good working order.
3. All Measurements are approximate.

