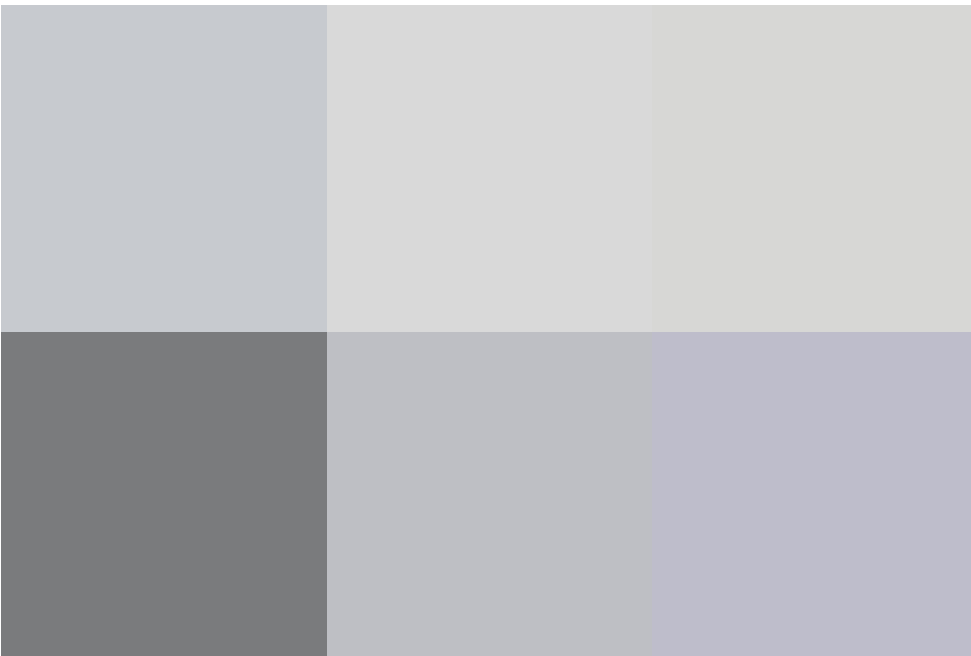


Richardson Road, St Andrews Ridge, SN25 4EA

guide price **£450,000 - £475,000**



 5  2  2

****GUIDE PRICE £450,000 - £475,000****

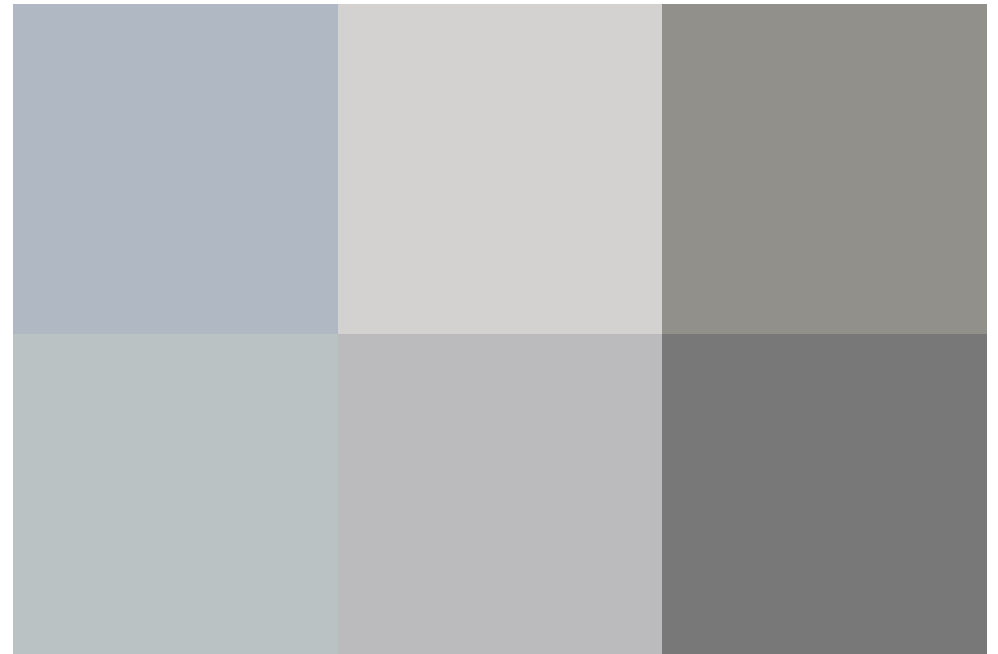
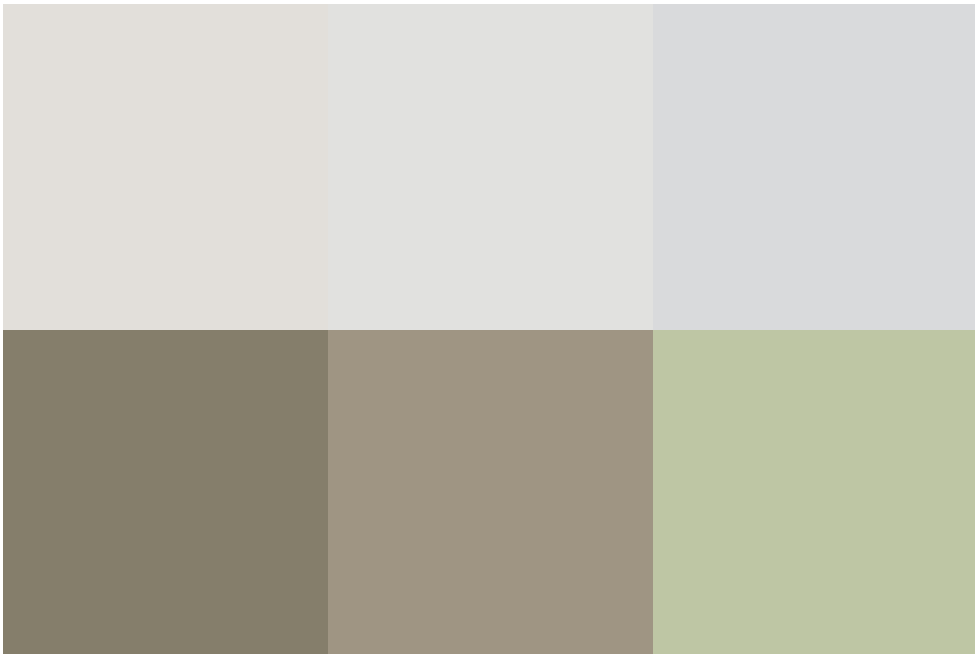
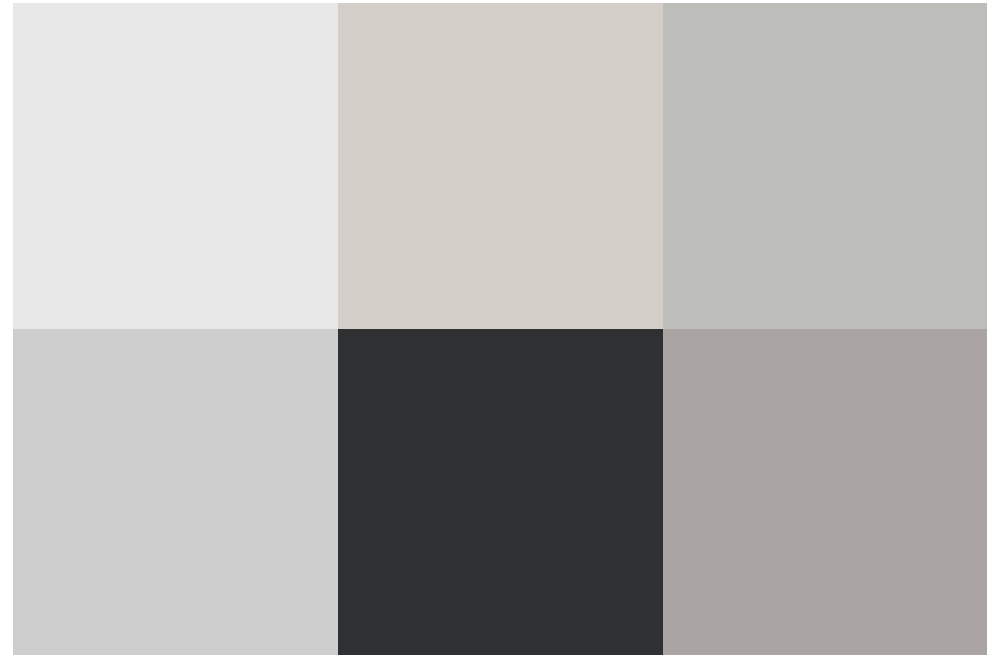
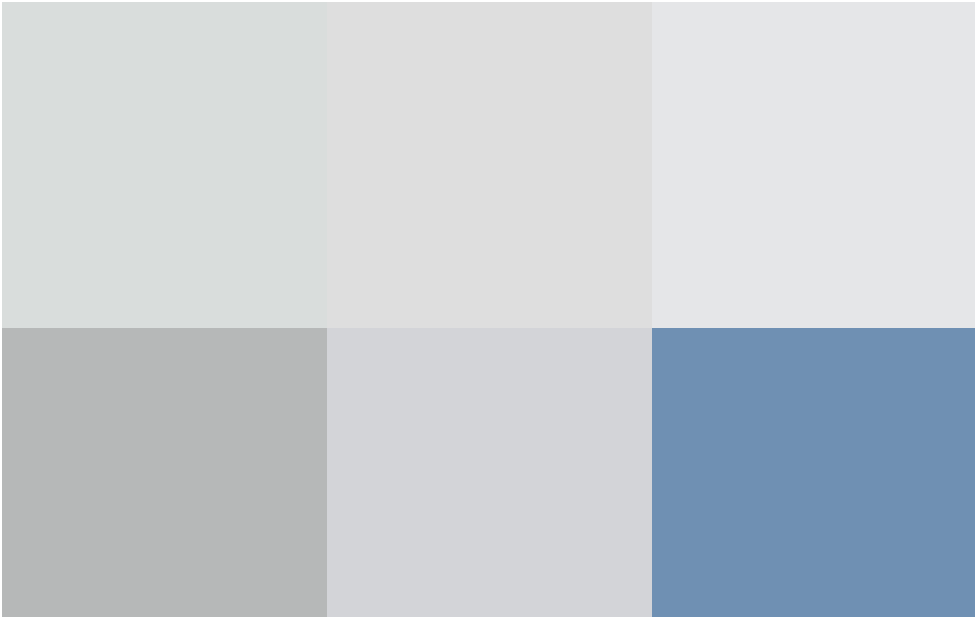
Located in the sought-after St Andrews Ridge estate in North Swindon, this impressive 5-bedroom detached home offers a perfect blend of space, comfort, and convenience. Located just moments from the A419 and close to local amenities, this property is ideal for families.

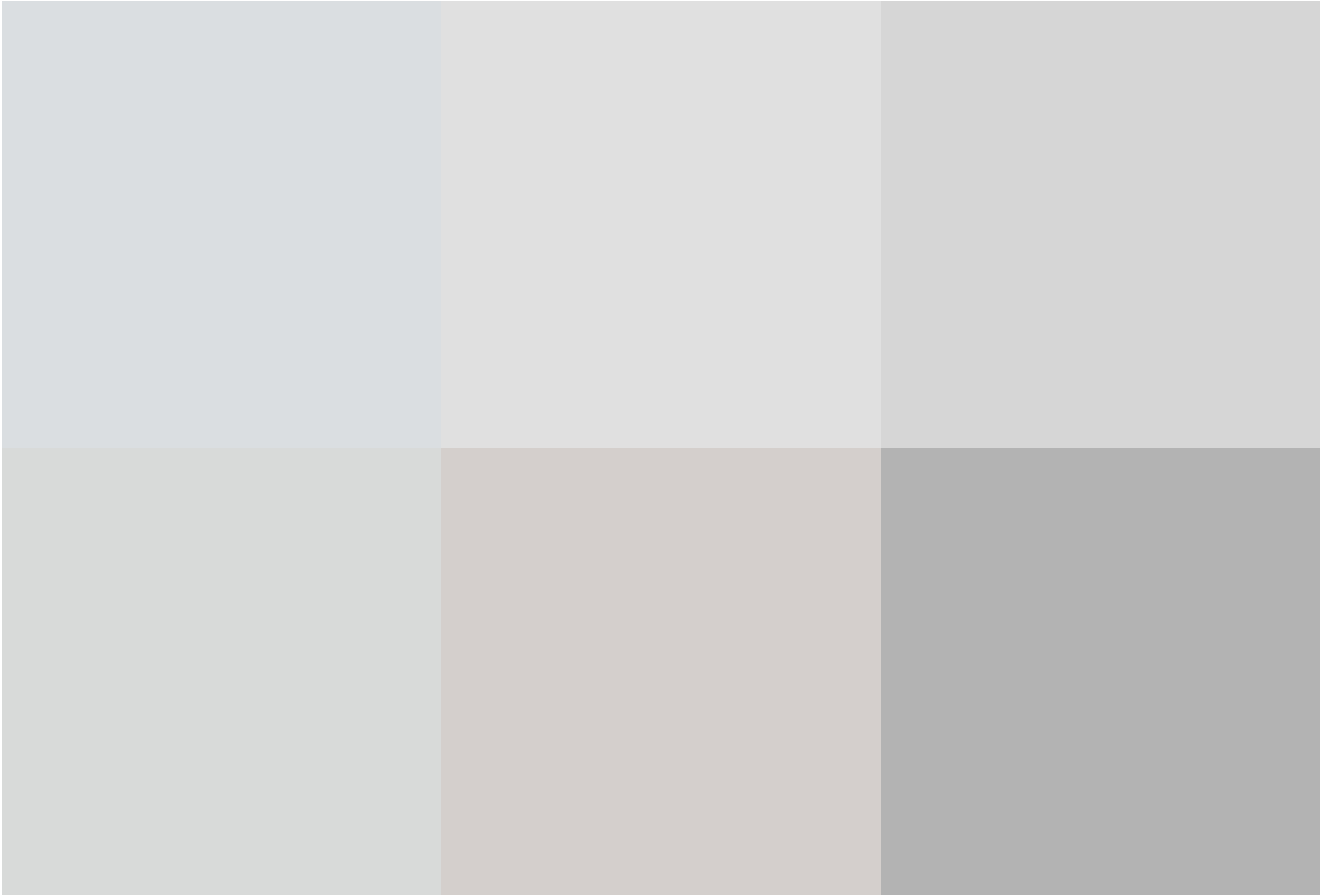
The ground floor features a spacious lounge, perfect for family gatherings or entertaining guests. The heart of the home is the large kitchen diner at the rear, which provides an open, light-filled space for cooking, dining, and socializing. A separate utility room adds practicality, while an integral garage offers ample storage.

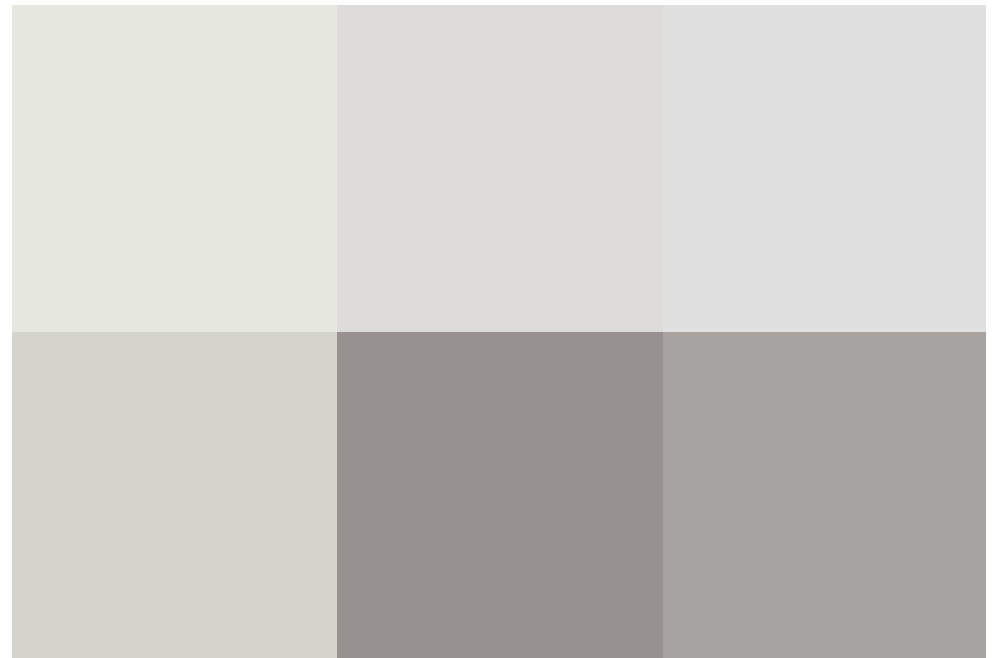
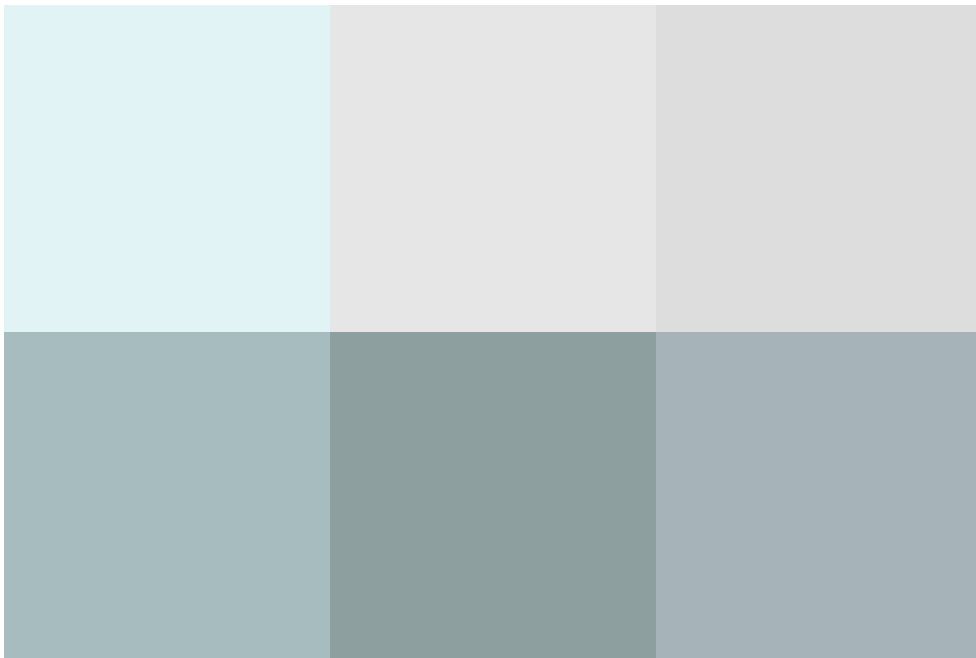
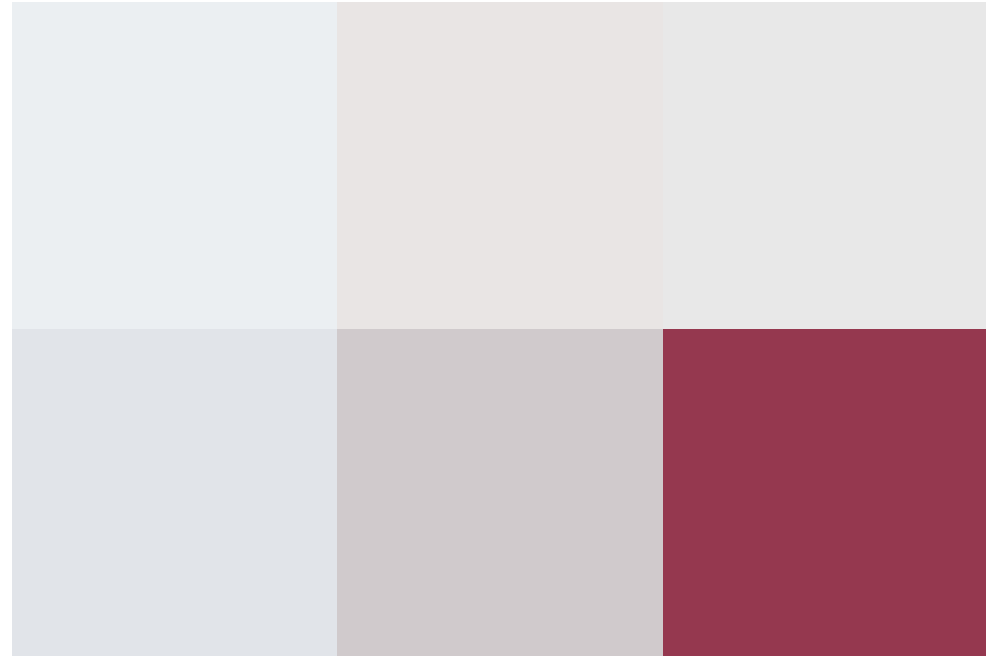
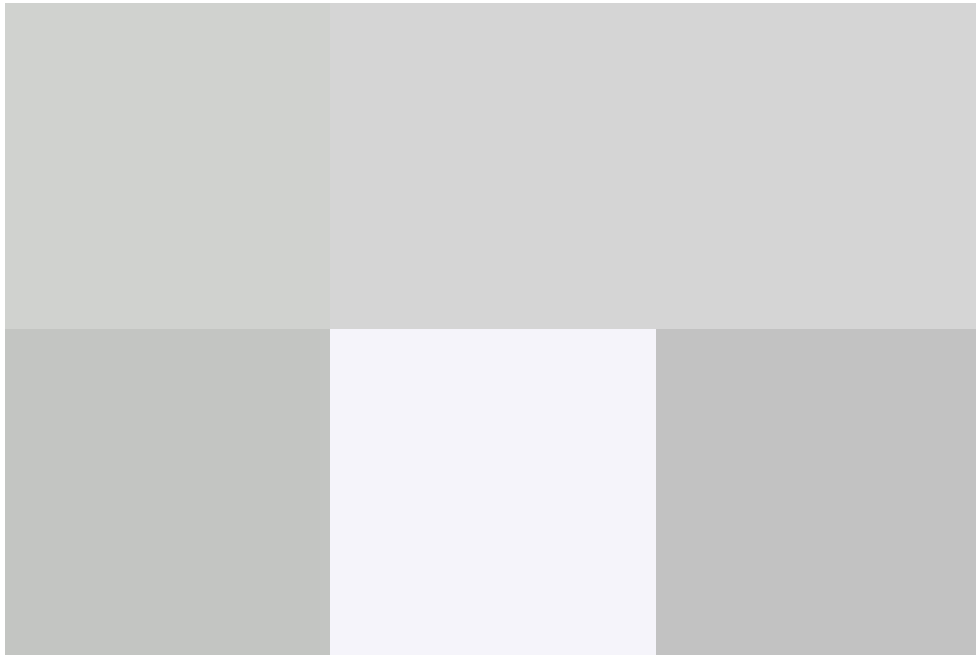
Upstairs, you will find five well-proportioned bedrooms, ensuring space and comfort for everyone. The master bedroom benefits from an en-suite bathroom. The remaining bedrooms are serviced by a well-appointed family bathroom, perfect for a growing family.

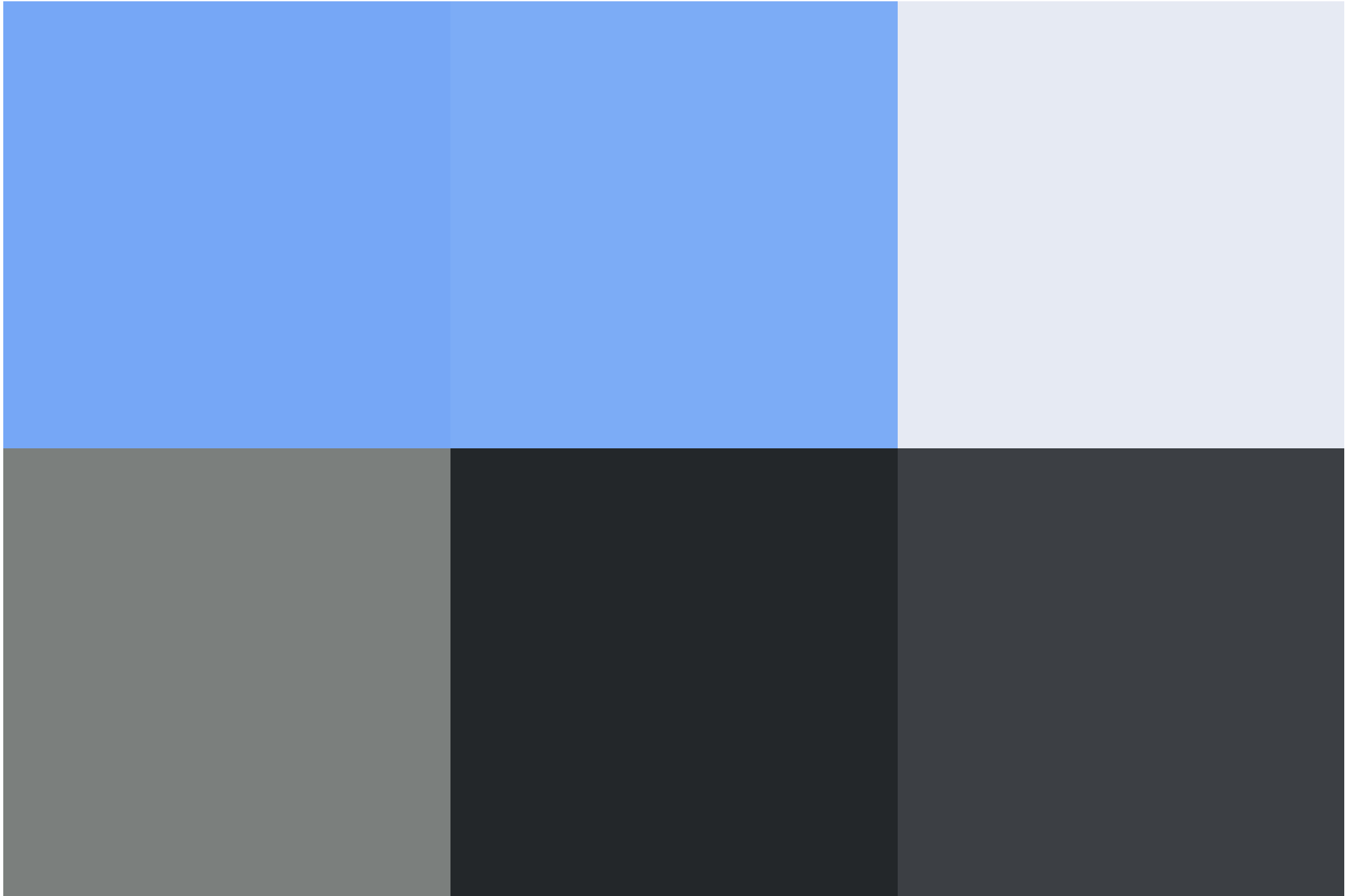
Outside, the south facing rear garden has been thoughtfully landscaped to create an inviting outdoor space, featuring a combination of patio decking and a lawn – ideal for summer barbecues, children's play, or simply enjoying the outdoors.

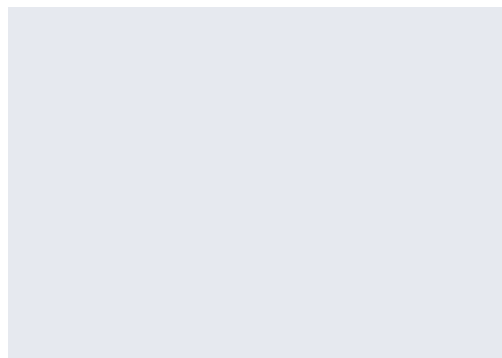
With its generous accommodation, modern amenities, and desirable location, this property is a fantastic opportunity to secure a family home in the popular St Andrews Ridge. Book your viewing today and discover the potential of this wonderful home!











call us for a free
valuation on your property

northswindon@richardjames.uk

Gemini House | Hargreaves Road | SN25 5AZ

exceptional service

Our team will guide you through the process of buying or selling your home.

We have a team of dedicated sales progressors in place to ensure your purchase or sale runs smoothly through to completion, keeping you in the loop and a close eye on your chain while moving you in as swiftly and smoothly as possible.

- Honest valuations in current market conditions
- Dedicated sales progression team
- Recommended financial advisors
- 5* service from valuation to completion
- Award winning lettings service
- Ahead of the game marketing strategies
- Professional photography
- Social media marketing
- Top listings on Rightmove and Zoopla

call us for a free
valuation on your property

northswindon@richardjames.uk

Gemini House | Hargreaves Road | SN25 5AZ

Richard James & their clients give notice that:

1. These sales and particulars do not constitute any part of an offer of contract, and are for the guidance of prospective purchasers only and should not be relied on as statements of fact.
2. No representations are made in these particulars as to the condition of the property or as to whether any service or facilities are in good working order.
3. All Measurements are approximate.

