



West Highland Road, Ash Brake, SN25 4FP

offers over **£280,000**

**richard
james**



 3  2  2

* energy efficiency
rating

E

Located in the ever popular location of Ash Brake, North Swindon, sits this well presented three bedroom semi-detached home. Nearby to local schools and the Orbital retail park, with the A419 reachable in 5 minutes by car it's in an ideal spot for families.

On entry to the home there is a hall with access to the downstairs cloakroom, lounge and dining room with an archway through to the kitchen. With white gloss units and wood effect worktops, the kitchen has a modern yet timeless feel.

Upstairs, you'll find the family bathroom and three bedrooms, with the master boasting the additional luxury of an en-suite shower room and fitted wardrobes.

Externally, the rear garden has been well maintained and offers a good level of privacy. It is mostly laid to lawn with a decked area to the front. A single garage and driveway parking complete this fantastic home.

Call now to arrange your viewing!

EPC: E
COUNCIL TAX: D







exceptional service

Our team will guide you through the process of buying or selling your home.

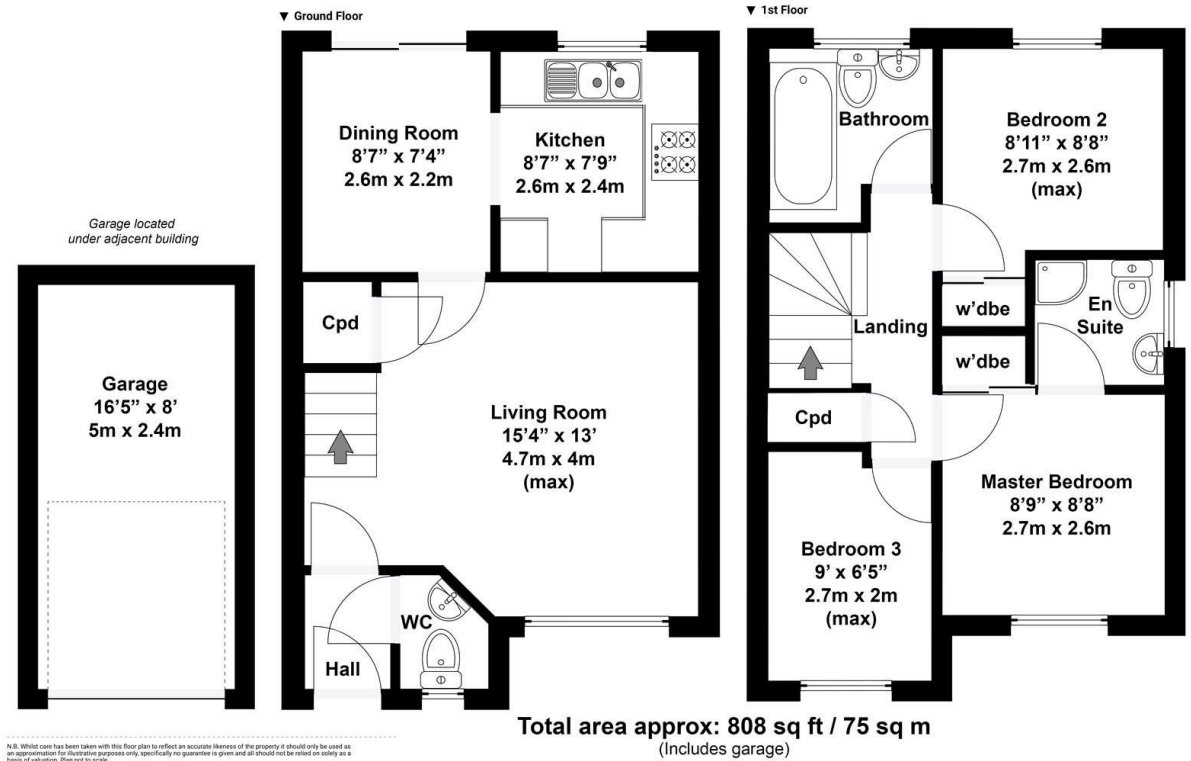
We have a team of dedicated sales progressors in place to ensure your purchase or sale runs smoothly through to completion, keeping you in the loop and a close eye on your chain while moving you in as swiftly and smoothly as possible.

- Honest valuations in current market conditions
- Dedicated sales progression team
- Recommended financial advisors
- 5* service from valuation to completion
- Award winning lettings service
- Ahead of the game marketing strategies
- Professional photography
- Social media marketing
- Top listings on Rightmove and Zoopla

call us for a free
valuation on your property

northswindon@richardjames.uk

Gemini House | Hargreaves Road | SN25 5AZ



Richard James & their clients give notice that:

1. These sales and particulars do not constitute any part of an offer of contract, and are for the guidance of prospective purchasers only and should not be relied on as statements of fact.
2. No representations are made in these particulars as to the condition of the property or as to whether any service or facilities are in good working order.
3. All Measurements are approximate.

rightmove 