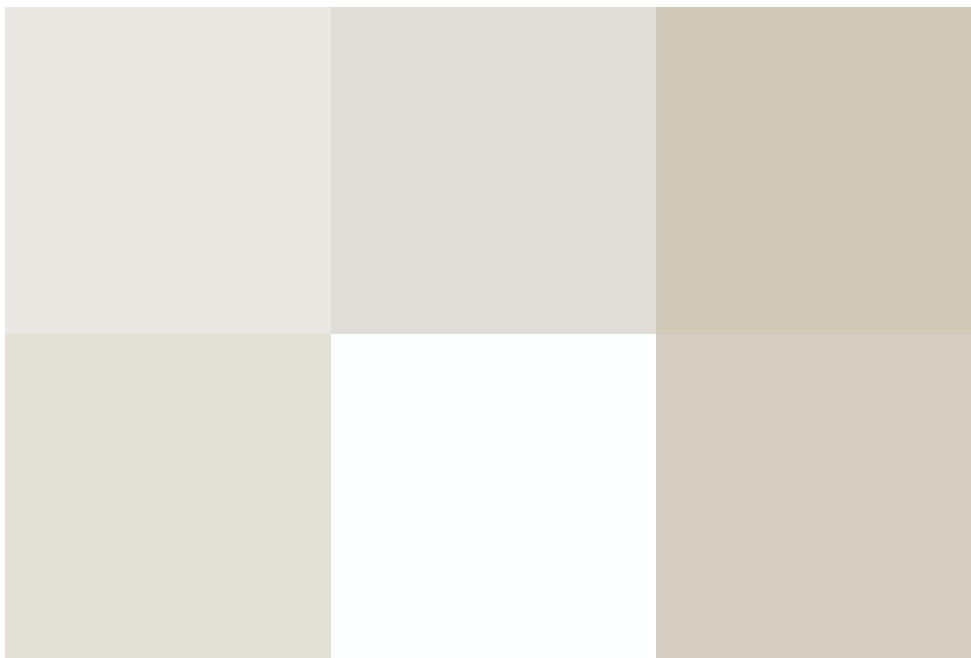
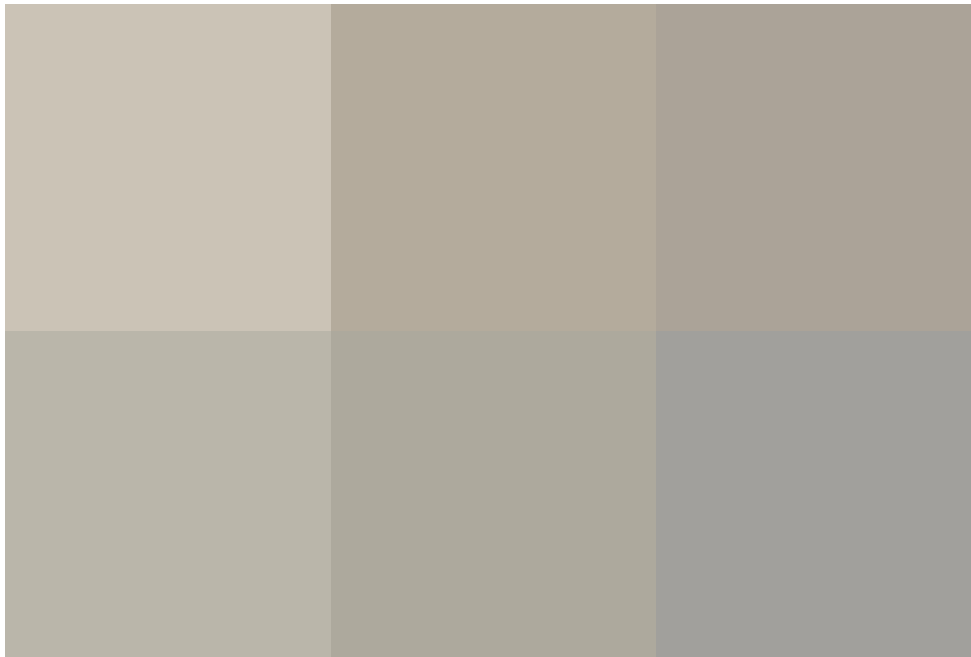


Archer Close, Stratton, SN2 7XJ

offers over **£180,000**



- ONE DOUBLE BEDROOM - NEW KITCHEN - 2 ALLOCATED PARKING SPACES - NO ONWARD CHAIN -

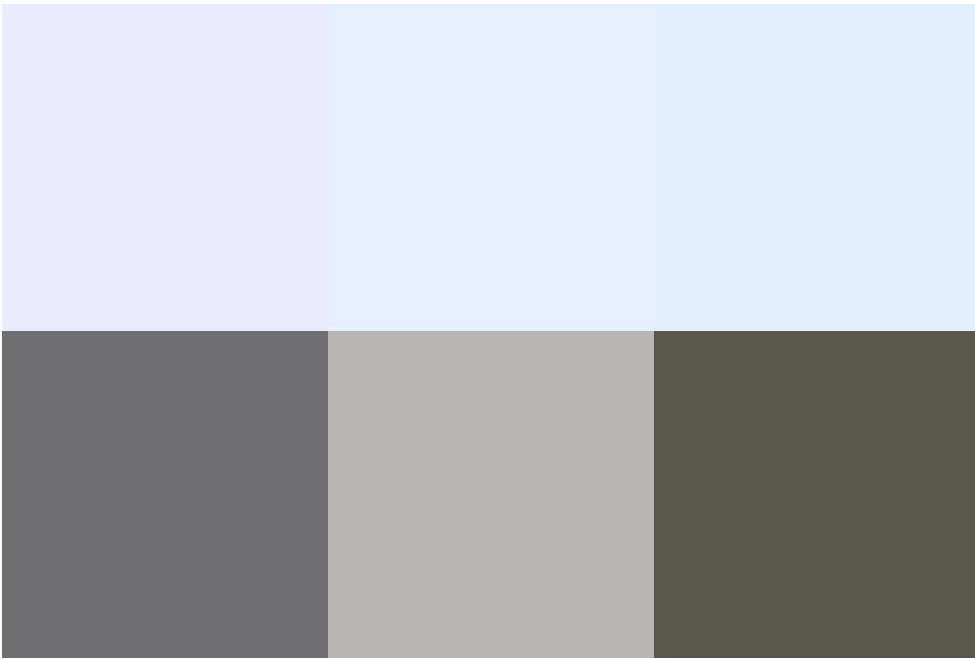
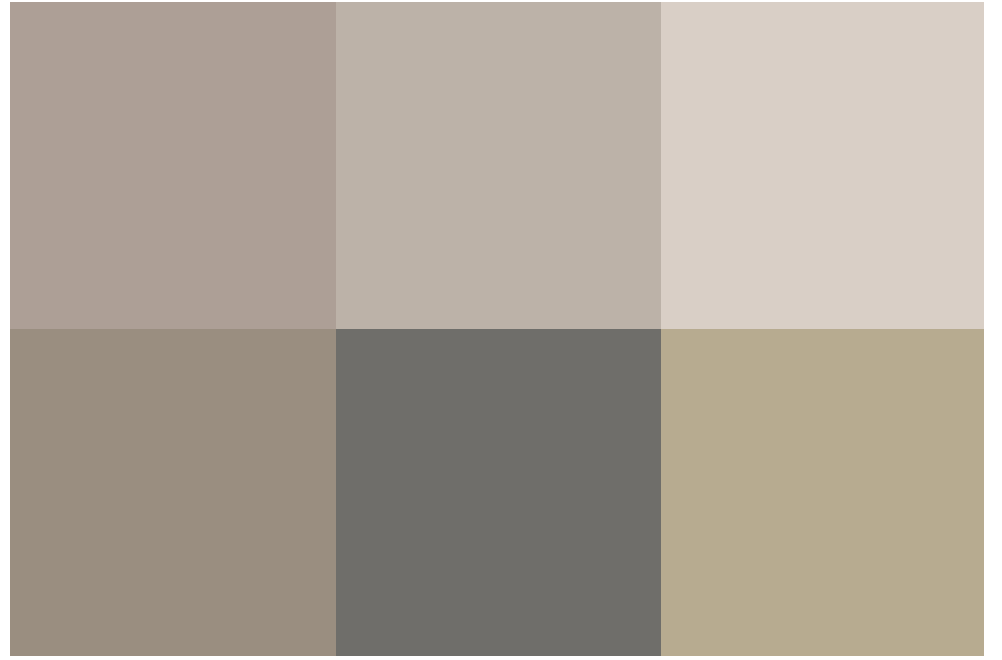
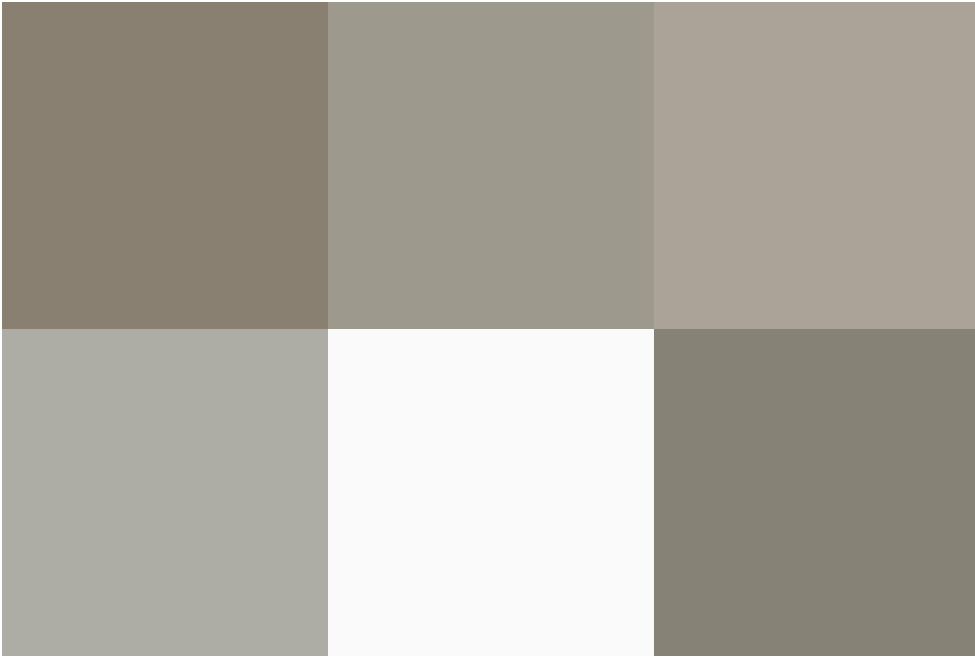
Situated within Upper Stratton, we are pleased to welcome to the market this ONE bedroom, terraced property.

The home itself has been recently redecorated & offers TWO allocated parking spaces to the front of the home.

The property comprises, kitchen, living/dining space, double bedroom benefiting BUILT IN STORAGE, and 3-piece family bathroom with shower over bath.

To the rear, you have a good sized, low maintenance garden, with part patio & part lawn area. A great place for friends and family to gather of an evening. As well as parking to the front of the home.

The home is being sold with NO ONWARD chain, and is perfect for investment purchases.



## exceptional service

Our team will guide you through the process of buying or selling your home.

We have a team of dedicated sales progressors in place to ensure your purchase or sale runs smoothly through to completion, keeping you in the loop and a close eye on your chain while moving you in as swiftly and smoothly as possible.

- Honest valuations in current market conditions
- Dedicated sales progression team
- Recommended financial advisors
- 5\* service from valuation to completion
- Award winning lettings service
- Ahead of the game marketing strategies
- Professional photography
- Social media marketing
- Top listings on Rightmove and Zoopla

---

call us for a free  
valuation on your  
property

---

[eastswindon@richardjames.uk](mailto:eastswindon@richardjames.uk)

Grange Drive | Stratton | SN3 4LA

### Richard James & their clients give notice that:

1. These sales and particulars do not constitute any part of an offer of contract, and are for the guidance of prospective purchasers only and should not be relied on as statements of fact.
2. No representations are made in these particulars as to the condition of the property or as to whether any service or facilities are in good working order.
3. All Measurements are approximate.

