



Westminster Road, Toothill, SN5

asking price **£340,000**

**richard  
james**



\* energy efficiency rating

This four bedroom semi-detached home is nestled away in a quiet cul-de-sac in the Toothill area of West Swindon and would be ideal for a growing family due to its extended living space, its four generous bedrooms plus its good sized rear garden.

The ground floor living accommodation comprises; entrance hall, a study, a generous living room, a modern 'L' shaped kitchen/dining room plus a conservatory leading to the rear garden.

The first floor offers; first floor landing, a large main bedroom with fitted wardrobes, the second bedroom, bedroom three plus bedroom four and the family bathroom.

To the rear is an enclosed rear garden with a gravelled private rear garden offering hard standing for a shed.

To the front is a generous driveway with parking for multiple properties.



## exceptional service

Our team will guide you through the process of buying or selling your home.

We have a team of dedicated sales progressors in place to ensure your purchase or sale runs smoothly through to completion, keeping you in the loop and a close eye on your chain while moving you in as swiftly and smoothly as possible.

- Honest valuations in current market conditions
- Dedicated sales progression team
- Recommended financial advisors
- 5\* service from valuation to completion
- Award winning lettings service
- Ahead of the game marketing strategies
- Professional photography
- Social media marketing
- Top listings on Rightmove and Zoopla

---

call us for a free  
valuation on your  
property

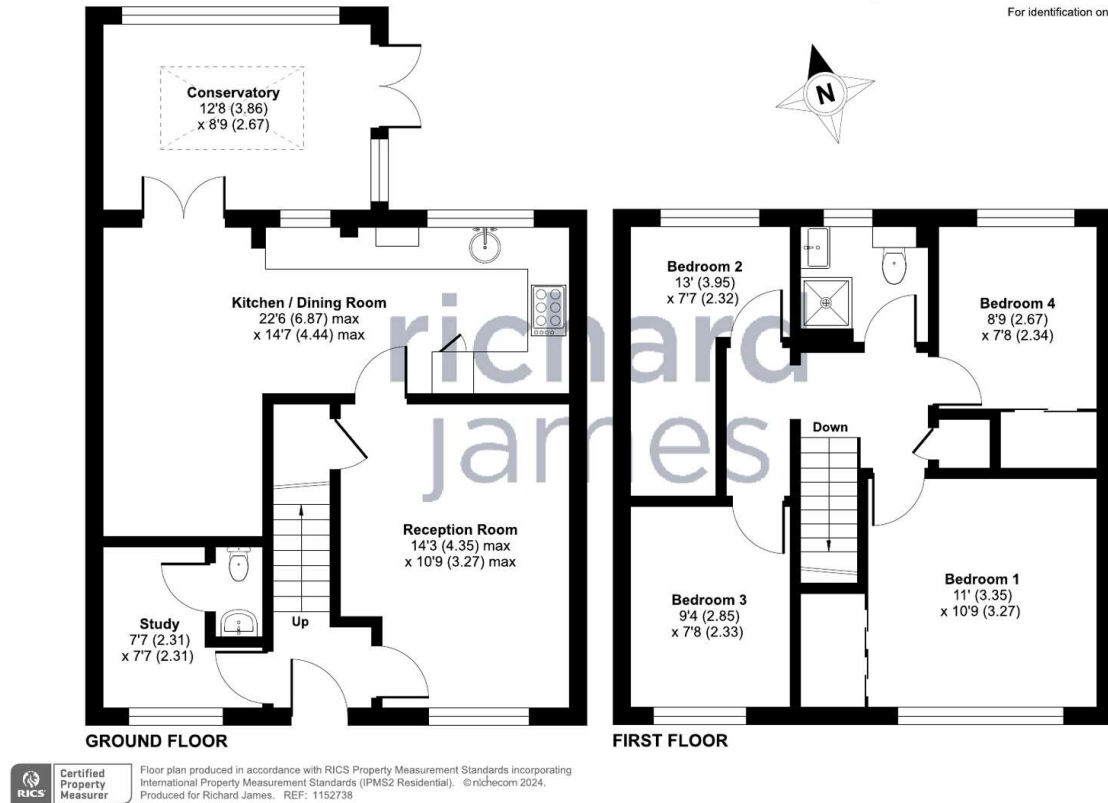
---

[westswindon@richardjames.uk](mailto:westswindon@richardjames.uk)

Lucena House | Shaw Village Centre | SN5 5PY

Approximate Area = 1119 sq ft / 103.9 sq m

For identification only - Not to scale



### Richard James & their clients give notice that:

1. These sales and particulars do not constitute any part of an offer of contract, and are for the guidance of prospective purchasers only and should not be relied on as statements of fact.
2. No representations are made in these particulars as to the condition of the property or as to whether any service or facilities are in good working order.
3. All Measurements are approximate.

rightmove 