



Longfellow Close, St Andrews Ridge, SN25 4GS

Offers Over £450,000

richard james



Longfellow Close

St Andrews Ridge

Freehold | EPC Rating - C



A beautifully presented four bedroom home located in the popular St Andrews Ridge area of North Swindon.

This impressive modern detached house offers the perfect blend of style and practicality. Boasting four generously sized bedrooms, this property is ideal for growing families or those looking for extra space. The interior of the house is thoughtfully designed, with a contemporary kitchen, spacious living areas, and sleek bathrooms.

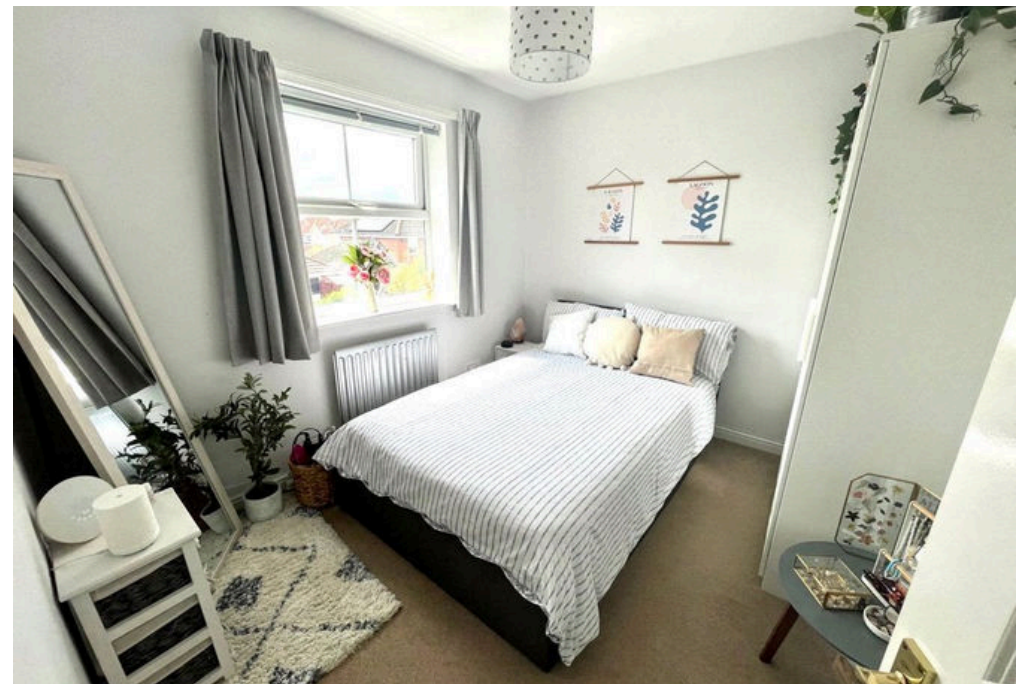
The rear garden has been well maintained and is of a good size, while the double garage and off-street parking offer convenience and ample storage options.



Don't miss out on the chance to make this stunning property your own. Contact us today to arrange a viewing.

Council tax band: E
EPC: C



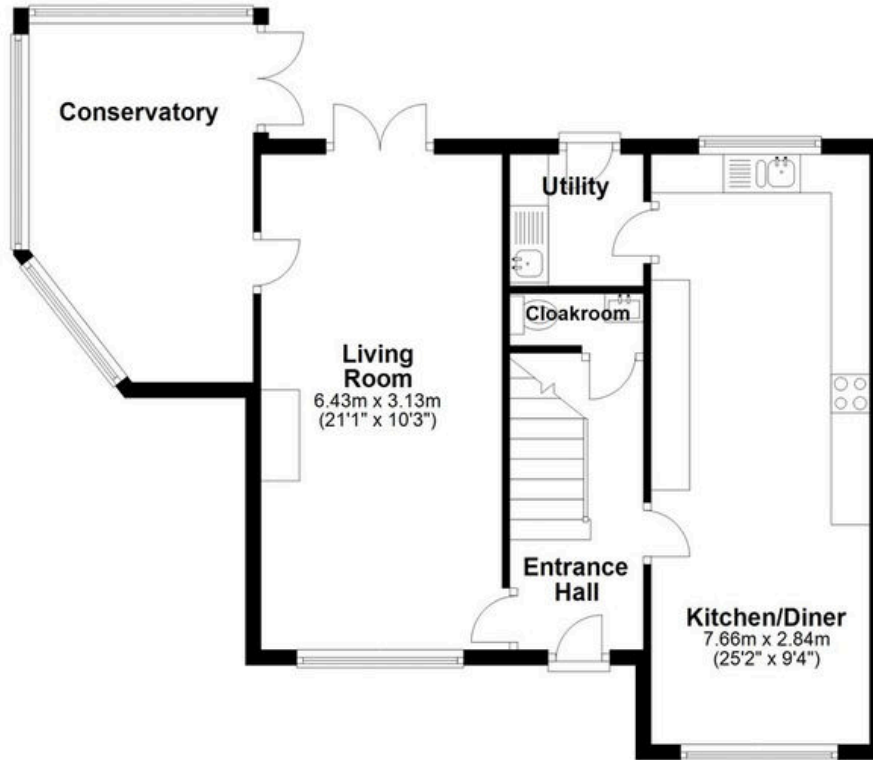




Floorplan

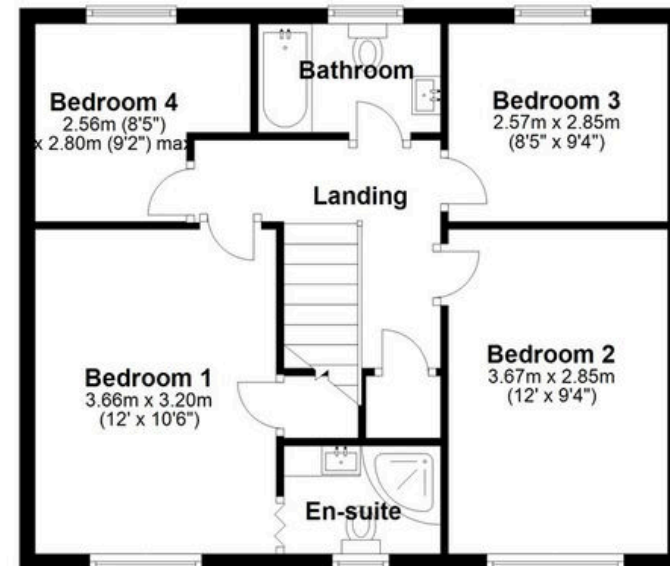
Ground Floor

Approx. 67.0 sq. metres (721.7 sq. feet)



First Floor

Approx. 53.1 sq. metres (571.1 sq. feet)



Total area: approx. 120.1 sq. metres (1292.8 sq. feet)

01793 261 262

northswindon@richardjames.uk

Gemini House | Hargreaves Road | Swindon | SN25 5AZ

richard james

richardjames.uk