



Toynbee Avenue, Tadpole Garden Village, SN25 2QQ

Guide Price £325,000 - £350,000

richard james



Toynbee Avenue

Tadpole Garden Village

Freehold | EPC Rating - B



Located in the heart of Tadpole Garden Village, North Swindon you'll find this well presented three bedroom semi detached home. In the catchment for well sought after schools and nearby to local amenities and the A419 it's great for families.

The accommodation comprises, entrance hallway, cloakroom, modern fitted kitchen and spacious lounge with French doors to the rear garden.

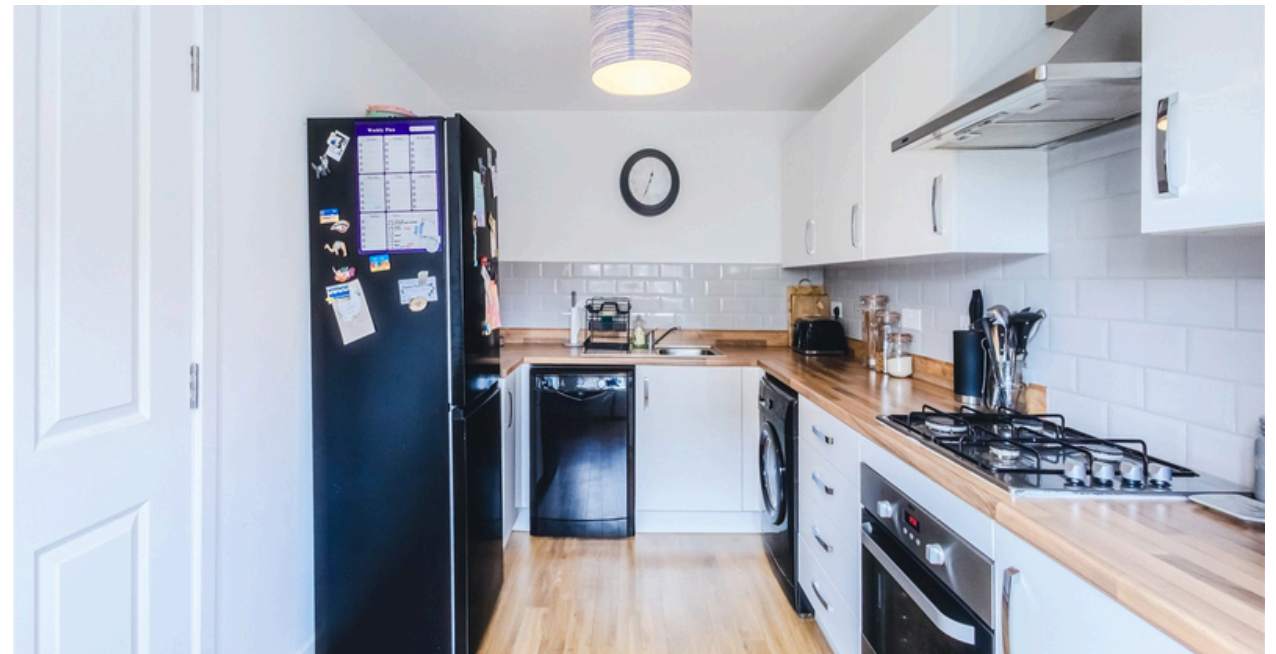
Upstairs you'll find the family bathroom and three bedrooms. With the master boasting the additional luxury of an en-suite shower room and walk in wardrobe. Externally, the rear garden has been mostly laid to astro turf with an additional patio area behind the garage.



Driveway parking and a single garage to side complete this fantastic home.

Call now to arrange your viewing

EPC: B
COUNCIL TAX: D

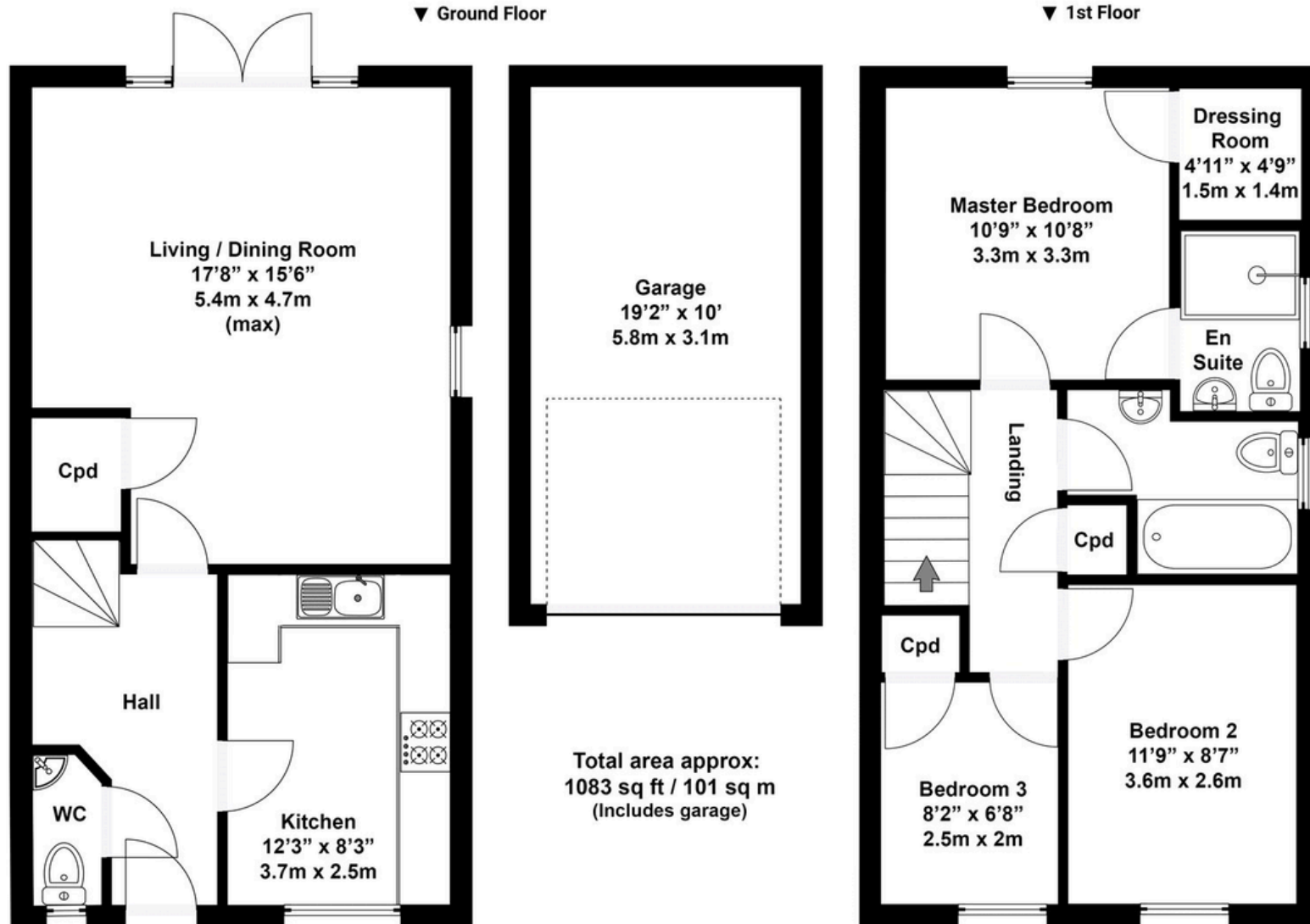








Floorplan



N.B. Whilst care has been taken with this floor plan to reflect an accurate likeness of the property it should only be used as an approximation for illustrative purposes only, specifically no guarantee is given and all should not be relied on solely as a basis of valuation. Plan not to scale.

01793 261 262

northswindon@richardjames.uk

Gemini House | Hargreaves Road | Swindon | SN25 5AZ

richardjames

richardjames.uk