



Furlong Close, Haydon Wick, SN25 1QP
Guide Price £475,000 - £500,000

richard james



Furlong Close

Hayson Wick

Freehold | EPC Rating - C



Tucked away in Haydon Wick, North Swindon sits this substantial four bedroom detached house. Improved from start to finish by the current owners and nearby to local schools and amenities, it makes for a great family home.

On entry there is a spacious front hall, allowing access to the lounge, cloakroom and kitchen diner. The kitchen is the real heart of this home. Complete with an island, Belfast sink, integrated appliances and plenty of space for a dining table - it's an ideal space for those who like to host! There is also a separate utility room with access to the garage.

Heading upstairs, you'll find the family bathroom and four good sized bedrooms. With the master benefiting from an additional WC.

Externally, the rear garden has been beautifully landscaped with a combination of patio, lawn and decking to catch all the sun spots! There is also an outbuilding fitted with a log burner for those cozy evenings and ample driveway parking to the front.



Call now to arrange your viewing!

EPC: C
COUNCIL TAX: E





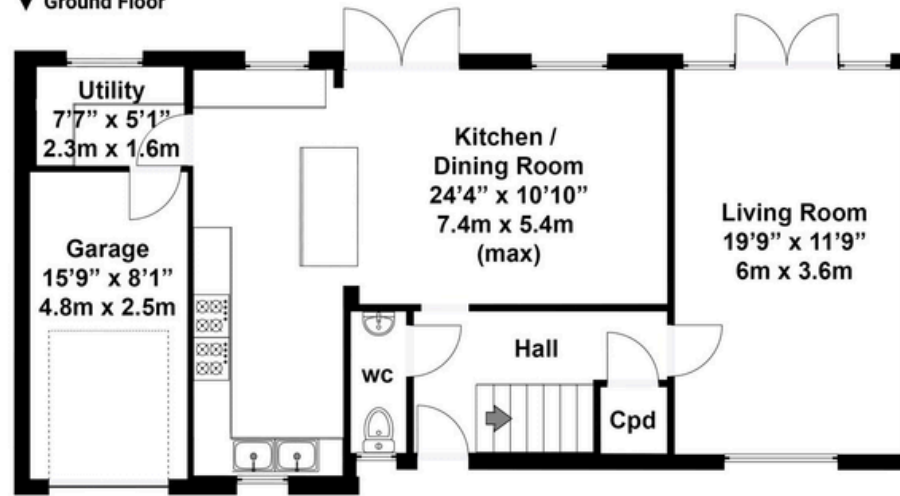






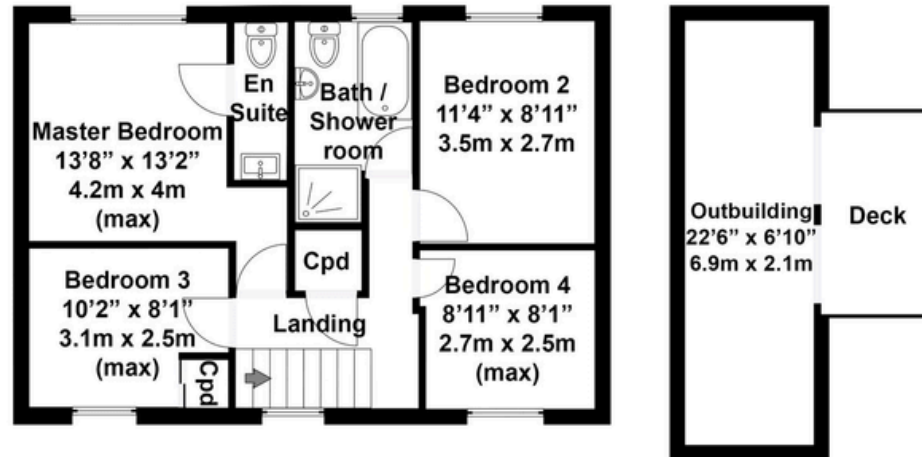
Floorplan

▼ Ground Floor



Total area approx: 1620 sq ft / 151 sq m
(Includes outbuilding)

▼ 1st Floor



N.B. Whilst care has been taken with this floor plan to reflect an accurate likeness of the property it should only be used as an approximation for illustrative purposes only, specifically no guarantee is given and all should not be relied on solely as a basis of valuation. Plan not to scale.

01793 261 262

northswindon@richardjames.uk

Gemini House | Hargreaves Road | Swindon | SN25 5AZ

richard james

richardjames.uk