



Diamond Crescent, Abbey Farm, SN25 2SJ

**Offers Over £300,000**

**richard james**





## Diamond Crescent

### Abbey Farm

Freehold | EPC Rating - B



Located in the sought after Abbey Farm development on the North side of Swindon, you'll find this spacious three bedroom semi detached home. Boasting modern, open plan living, it's an ideal family space for entertaining.

On entry to the home there is a large hallway providing access to the downstairs WC, and open living space with kitchen to the front and a generous lounge with french doors to the rear garden. The garden is a great size and mostly laid to lawn with a patio area to the front.

Upstairs, you'll find the family bathroom and three bedrooms, with the master boasting an en-suite shower room and built in wardrobes.

Ample driveway parking at the rear completes this fantastic home.

Abbey Farm offers a primary school and local co-op for your convenience, whilst only being a five minute drive to the A419.

Call us today to book your viewing.

EPC: B  
COUNCIL TAX: D





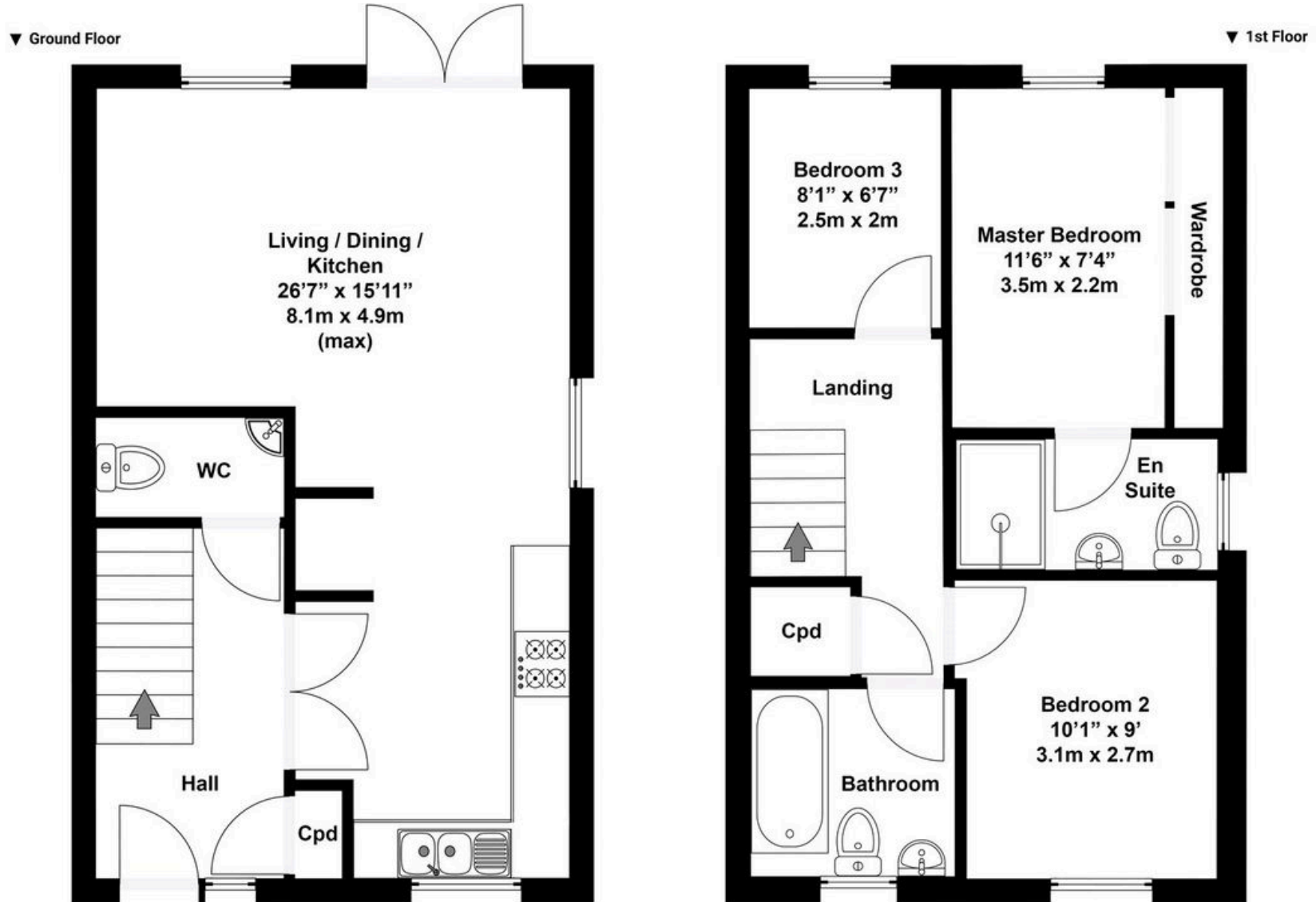








# Floorplan



N.B. Whilst care has been taken with this floor plan to reflect an accurate likeness of the property it should only be used as an approximation for illustrative purposes only, specifically no guarantee is given and all should not be relied on solely as a basis of valuation. Plan not to scale.

Total area approx: 811 sq ft / 75 sq m

01793 261 262

northswindon@richardjames.uk

Gemini House | Hargreaves Road | Swindon | SN25 5AZ

richard james

richardjames.uk