

richard
james



39 Cheney Manor Road, Swindon, Wiltshie, SN2 2NT

Asking Price £550,000



IN A NUTSHELL

 **5**  **1**  **2**

A remarkable five bedroom detached bungalow, offered for sale in this popular location within Swindon. The accommodation is spread over two floors but has been improved from top to bottom by the current owners. Comprising; entrance hall, a stunning reception space which is open plan with the kitchen/diner - all finished to a great standard. You'll find three of five bedrooms on the ground floor, to include the master bedroom with ensuite and wardrobes. The ground floor also benefits from a WC. You'll find the remaining two bedrooms to the first floor which are a brilliant size - along with the family bathroom. The rear garden is an amazing space - brilliant in size but also laid out really well. With ample space, a covered patio area, lawn and a pool structure - offering ample space for all of the family. At the bottom of this great garden you'll find an outbuilding which could be used for a multitude of uses.

EPC Rating: D

Council Tax Band: D

EPC



EXCEPTIONAL SERVICE

Our team will guide you through the process of buying or selling your home. We have a team of dedicated sales progressors in place to ensure your purchase or sale runs smoothly through to completion, keeping you in the loop and a close eye on your chain while moving you in as swiftly and smoothly as possible.

-  Honest valuations in current market conditions
-  Dedicated sales progression team
-  Recommended financial advisors
-  5* service from valuation to completion
-  Award winning lettings service
-  Ahead of the game marketing strategies
-  Professional photography
-  Social media marketing
-  Top listings on Rightmove and Zoopla

CALL US FOR A FREE VALUATION ON YOUR PROPERTY...

**richard
james**

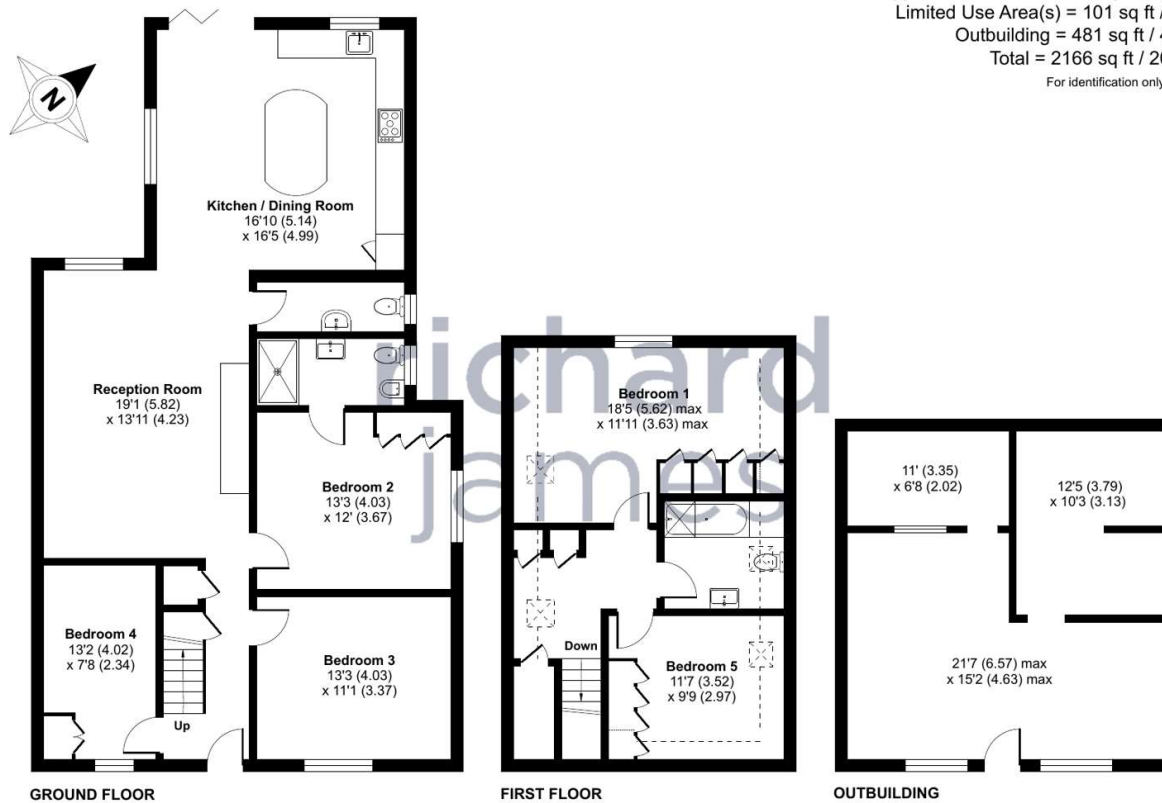
101 Victoria Road | Old Town | Swindon | SN1 3BD

| 01793 311 051

matthewboobyer@richardjames.uk

Find me on [incentivised.com/Matthew Boobyer](https://www.incentivised.com/Matthew_Boobyer)

Approximate Area = 1584 sq ft / 147.2 sq m
Limited Use Area(s) = 101 sq ft / 9.3 sq m
Outbuilding = 481 sq ft / 44.6 sq m
Total = 2166 sq ft / 201.2 sq m
For identification only - Not to scale



 Floor plan produced in accordance with RICS Property Measurement Standards incorporating International Property Measurement Standards (IPMS2 Residential). © n3checom 2024. Produced for Richard James. REF: 1132389

Richard James & their clients give notice that:

1. These sales and particulars do not constitute any part of an offer of contract, and are for the guidance of prospective purchasers only and should not be relied on as statements of fact.
2. No representations are made in these particulars as to the condition of the property or as to whether any service or facilities are in good working order.
3. All Measurements are approximate.

rightmove
find your happy