



Tantivy, Mill Lane, Stanton Fitzwarren, Wiltshire SN6 7SA

**Guide Price: £950,000 - £1,000,000**

**richard james**

Village & Country Homes





## Mill Lane

### Stanton Fitzwarren

Freehold | EPC Rating - C



Nestled within the highly coveted village of Stanton Fitzwarren, Tantivy stands as a distinguished testament to luxurious living. Boasting four generously proportioned bedrooms and four immaculately designed bathrooms, this fantastic home offers versatility and space in abundance.

Stepping inside, the heart of the home reveals itself in the form of a breathtaking open-plan kitchen/diner, stretching approximately 38 feet in length. Crafted with the finest materials, including Neptune units & doors, exquisite granite work surfaces and underfloor heating, adorned with velux windows that flood the space with natural light.

For those seeking a dedicated workspace, a well-appointed study awaits, while the formal dining room sets the stage for memorable meals. The ground floor also hosts the luxurious main bedroom suite, featuring an impressive dressing room and a recently renovated ensuite bathroom.

Ascending to the upper level, you'll discover three additional double bedrooms, each accompanied by its own en suite bathroom. Two of these bedrooms are equipped with built-in wardrobes.

Outside, this home boasts an expansive driveway and a double garage, providing ample off-road parking and storage. The private wrap-around gardens include lush lawn and multiple patio areas, ideal for outdoor gatherings.

With its impeccable design, superior amenities, and prime location, Tantivy offers a unique opportunity for discerning buyers seeking luxury in the countryside.

uPVC Double Glazing, Gas Central Heating, Mains Drainage & Mains Electrical Supply throughout.

Council Tax Band - F  
Swindon Borough Council





















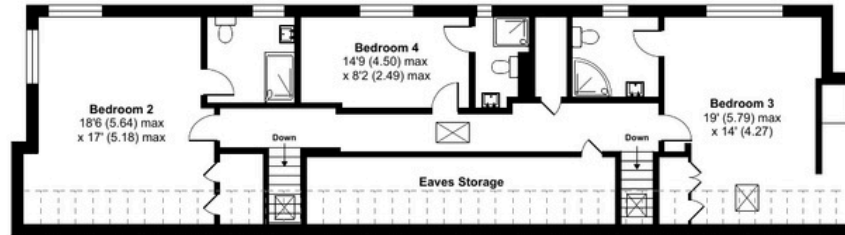


# Floorplan



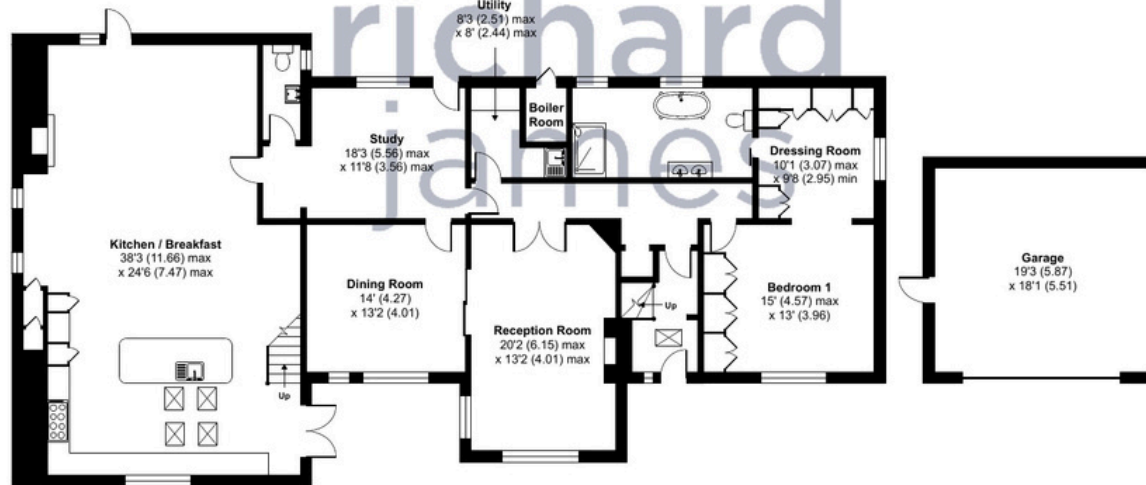
Approximate Area = 3370 sq ft / 313.1 sq m  
 Limited Use Area(s) = 221 sq ft / 20.5 sq m  
 Garage = 351 sq ft / 32.6 sq m  
 Boiler Room = 17 sq ft / 1.5 sq m  
 Total = 3959 sq ft / 367.7 sq m

For identification only - Not to scale



FIRST FLOOR

Denotes restricted head height



GROUND FLOOR



Floor plan produced in accordance with RICS Property Measurement Standards incorporating International Property Measurement Standards (IPMS2 Residential). © ncheom 2024. Produced for Richard James. REF: 1101467

01793 765 292

highworth@richardjames.uk

36 High Street | Highworth | SN6 7AQ

richard james

richardjames.uk