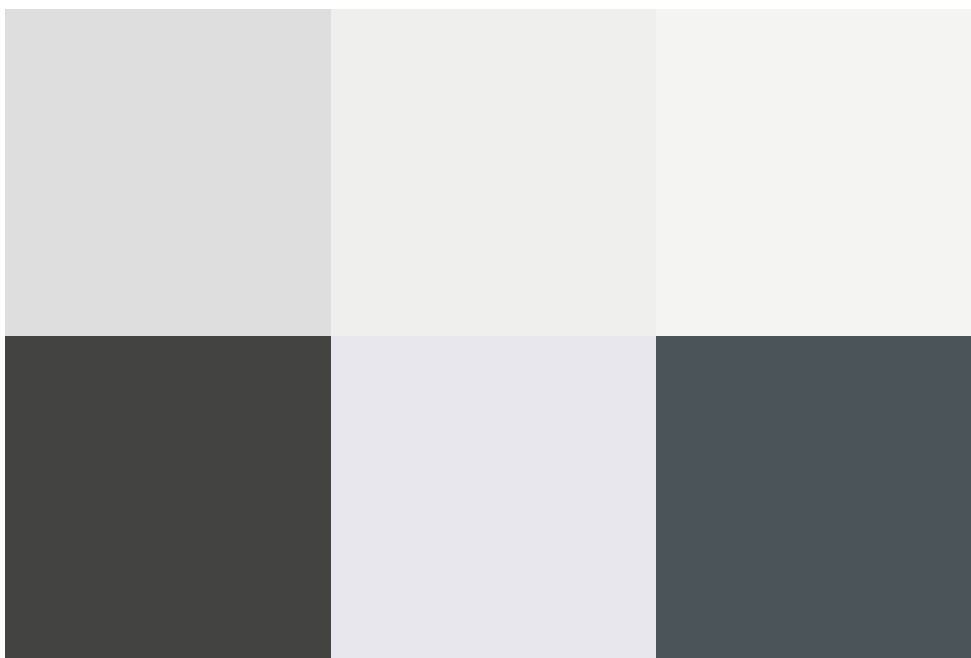
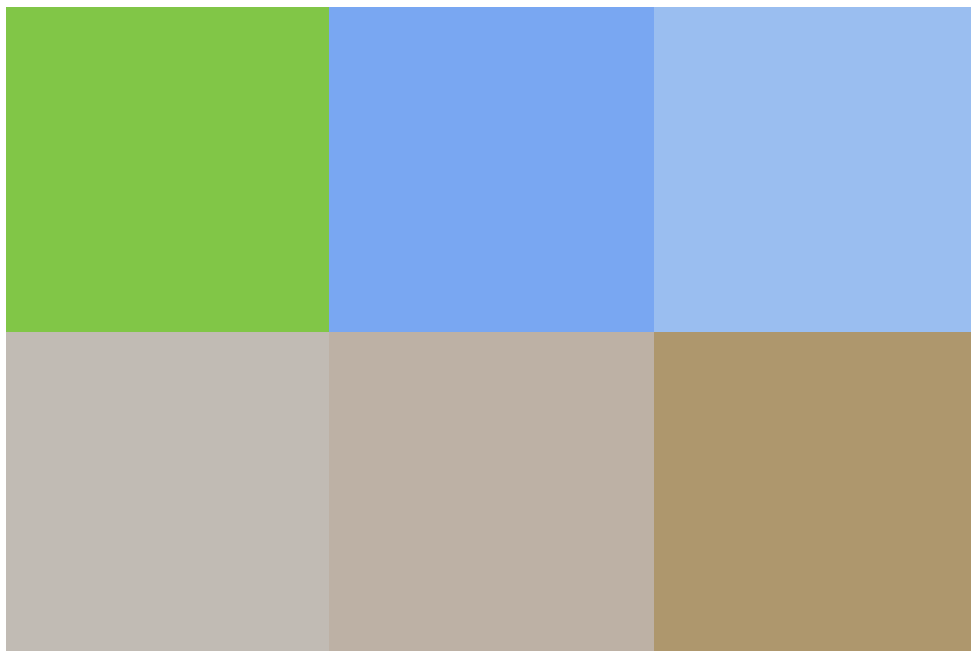


Stubsmead, Eldene, SN3 3TA

asking price **£240,000**



THREE BEDROOMS - MODERN THROUGHOUT - GARDEN - LARGE KITCHEN -
OPEN PLAN LOUNGE/DINER - MUST VIEW

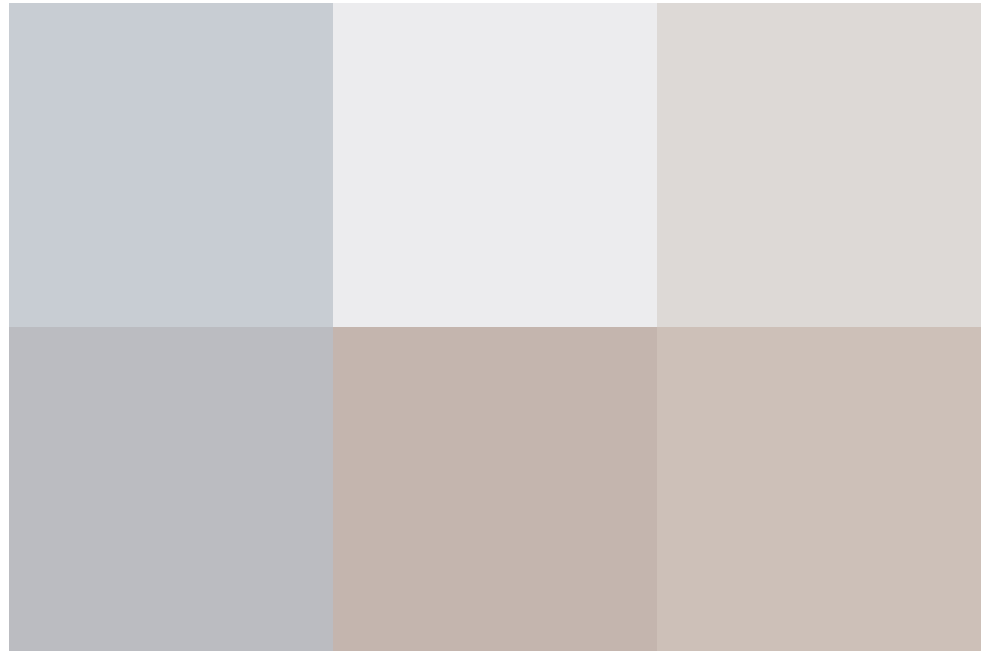
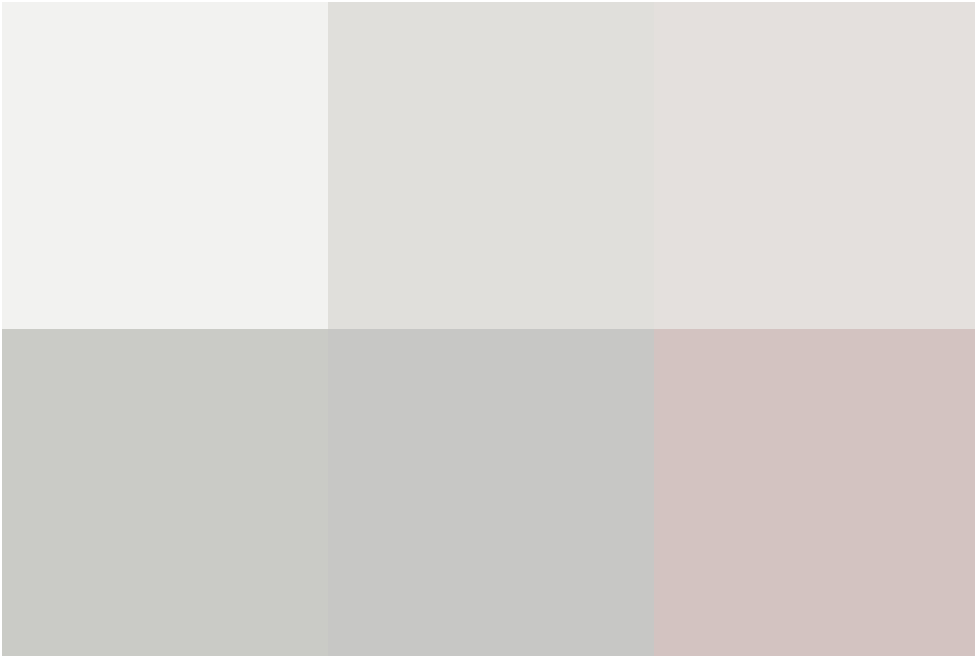
This is a fantastic opportunity to purchase this three-bedroom home in
Eldene which has been modernised throughout.

The home has a large entrance hall, a lounge diner which stretches over the
length of the property, the kitchen has been moved to the rear. The lounge
has double doors leading to the rear garden making this a great property for
families.

Upstairs offers three large bedrooms and a family bathroom which offers
both shower and corner bath.

The property is decorated neutrally throughout and would be perfect for
families or first-time buyers. The property is close by to local transport links,
schools, shops and amenities.

We highly recommend a viewing...



exceptional service

Our team will guide you through the process of buying or selling your home.

We have a team of dedicated sales progressors in place to ensure your purchase or sale runs smoothly through to completion, keeping you in the loop and a close eye on your chain while moving you in as swiftly and smoothly as possible.

- Honest valuations in current market conditions
- Dedicated sales progression team
- Recommended financial advisors
- 5* service from valuation to completion
- Award winning lettings service
- Ahead of the game marketing strategies
- Professional photography
- Social media marketing
- Top listings on Rightmove and Zoopla

call us for a free
valuation on your
property

eastswindon@richardjames.uk

Grange Drive | Stratton | SN3 4LA

Richard James & their clients give notice that:

1. These sales and particulars do not constitute any part of an offer of contract, and are for the guidance of prospective purchasers only and should not be relied on as statements of fact.
2. No representations are made in these particulars as to the condition of the property or as to whether any service or facilities are in good working order.
3. All Measurements are approximate.

