



Kingsdown Park, Swindon, SN25 6PG

asking price **£100,000**

**richard
james**



Introducing a 2-bedroom park home that defines modern comfort and convenience, set in the serene and up-and-coming Kingsdown Park Home Development, with allocated parking at the front or at the side of the home, located adjacent to the picturesque Stratton Woods. This property offers the perfect blend of contemporary living, natural beauty, and hassle-free amenities, making it an ideal choice for those seeking a peaceful and easygoing lifestyle.

As you step inside, you'll be greeted by a spacious and inviting lounge diner, which serves as the heart of the home. The room is adorned with a fireplace, adding a touch of warmth and coziness to your living space. Patio doors open up to give access to the rear which reveals stunning views of Stratton Woods and the garden area, creating a seamless connection between the indoors and outdoors.

The kitchen is thoughtfully integrated into the open plan living space, allowing you to prepare meals while staying engaged with family and guests. It's equipped with the latest appliances, making cooking and entertaining a delight.

This park home features two bedrooms, with the main bedroom providing ample space for a double bed. A single bedroom with a fitted wardrobe and a main bathroom with a walk in shower complete the sleeping and bathing quarters.

Electricity is metered to each home, while water meters are read quarterly, ensuring a convenient billing process for homeowners. Gas supply arrangements are the responsibility of the homeowner, offering flexibility in choosing a supplier.

This park home is situated in the blossoming Kingsdown Park Home Development, nestled beside Stratton Woods. A short stroll will lead you to the local Kingsdown Pub and Coop shop, catering to your everyday needs. It's important to note that this development is exclusively for those aged 50 and over, and the properties cannot be mortgaged. If you're interested in please don't hesitate to get in touch.



exceptional service

Our team will guide you through the process of buying or selling your home.

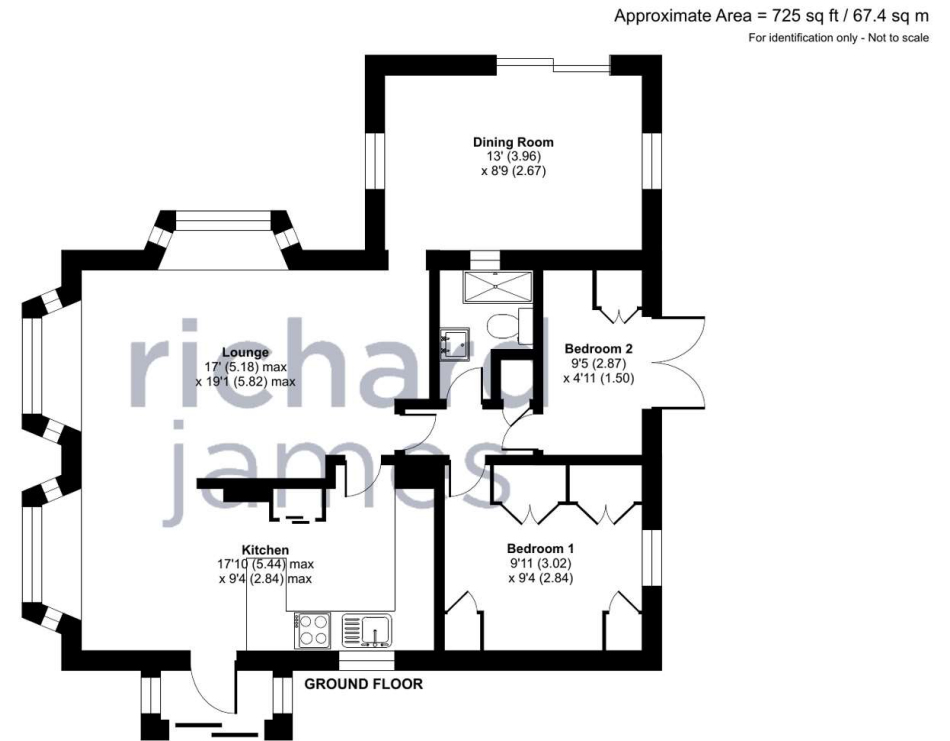
We have a team of dedicated sales progressors in place to ensure your purchase or sale runs smoothly through to completion, keeping you in the loop and a close eye on your chain while moving you in as swiftly and smoothly as possible.

- Honest valuations in current market conditions
- Dedicated sales progression team
- Recommended financial advisors
- 5* service from valuation to completion
- Award winning lettings service
- Ahead of the game marketing strategies
- Professional photography
- Social media marketing
- Top listings on Rightmove and Zoopla

call us for a free
valuation on your
property

eastswindon@richardjames.uk

Grange Drive | Stratton | SN3 4LA



Floor plan produced in accordance with RICS Property Measurement Standards incorporating International Property Measurement Standards (IPMS2 Residential). © richcom 2023. Produced for Richard James. REF: 1058887

Richard James & their clients give notice that:

1. These sales and particulars do not constitute any part of an offer of contract, and are for the guidance of prospective purchasers only and should not be relied on as statements of fact.
2. No representations are made in these particulars as to the condition of the property or as to whether any service or facilities are in good working order.
3. All Measurements are approximate.

rightmove