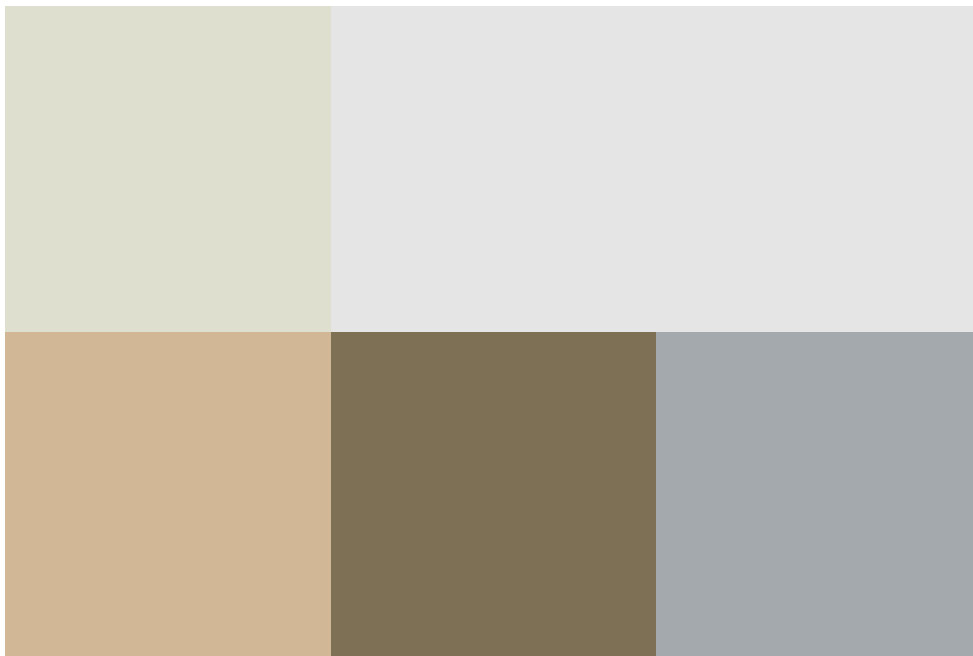
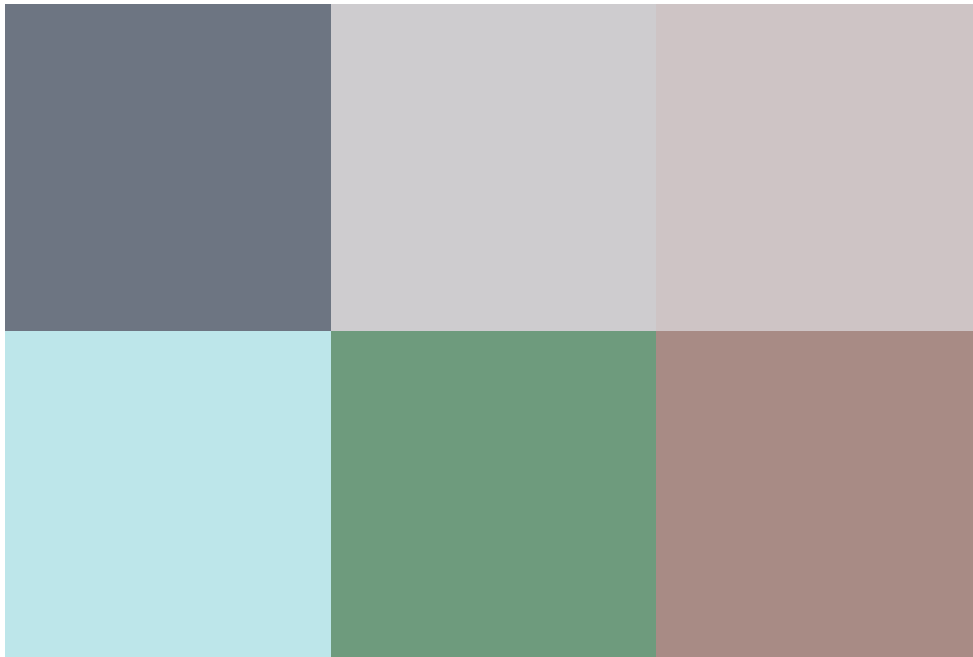


Brookmeadow Park, Wroughton, SN4 9LA

guide price **£85,000-£95,000**



 2  1  1

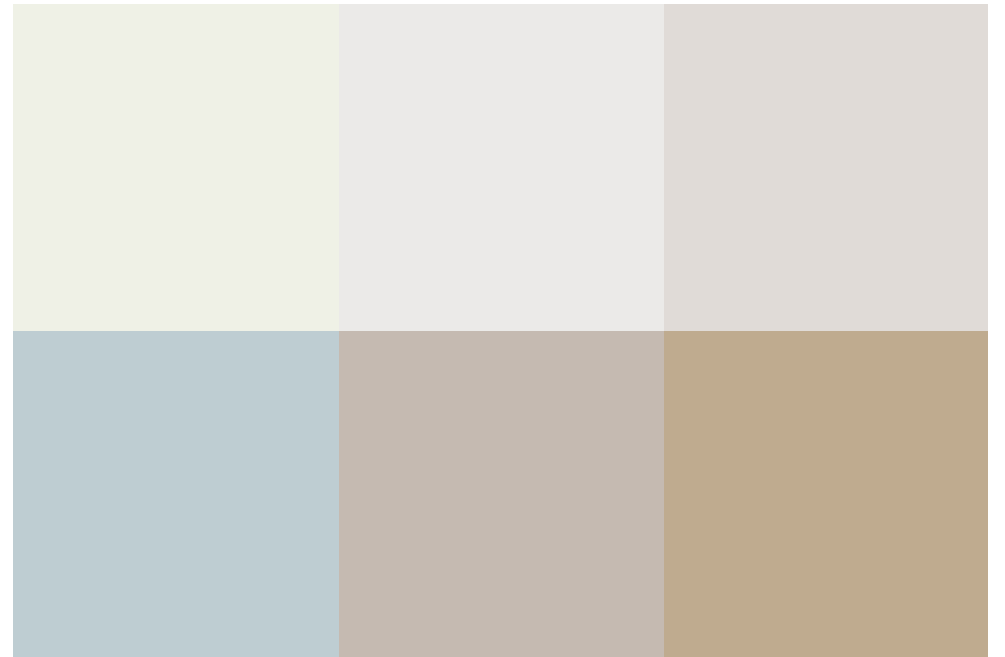
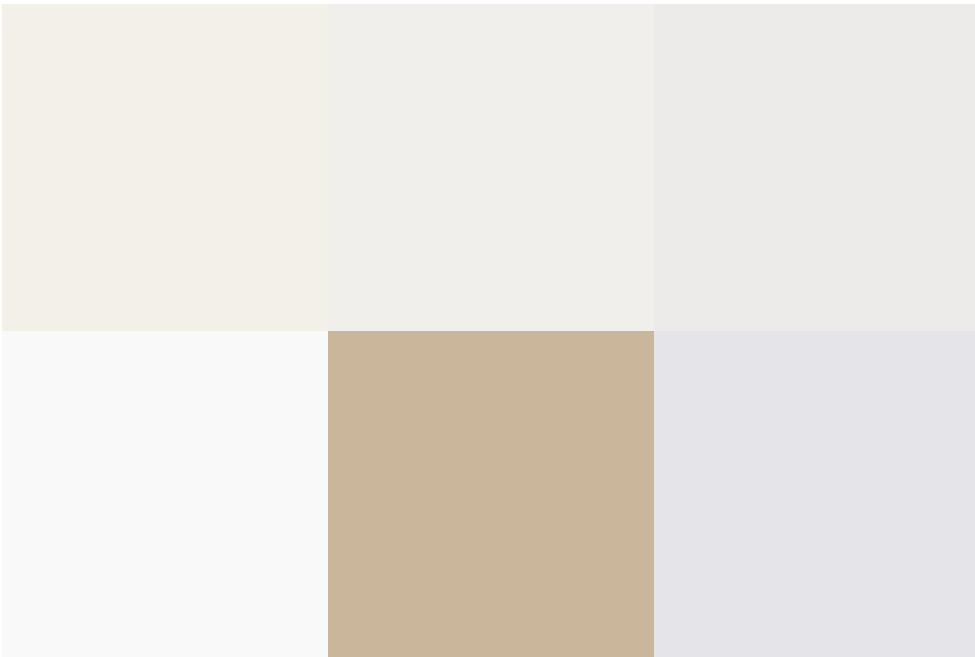
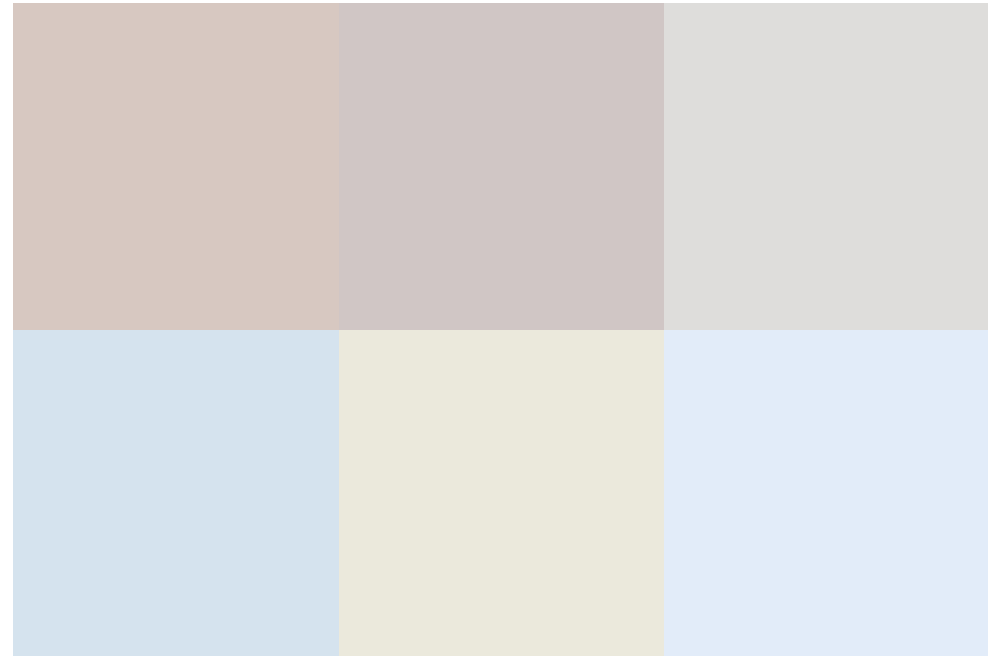
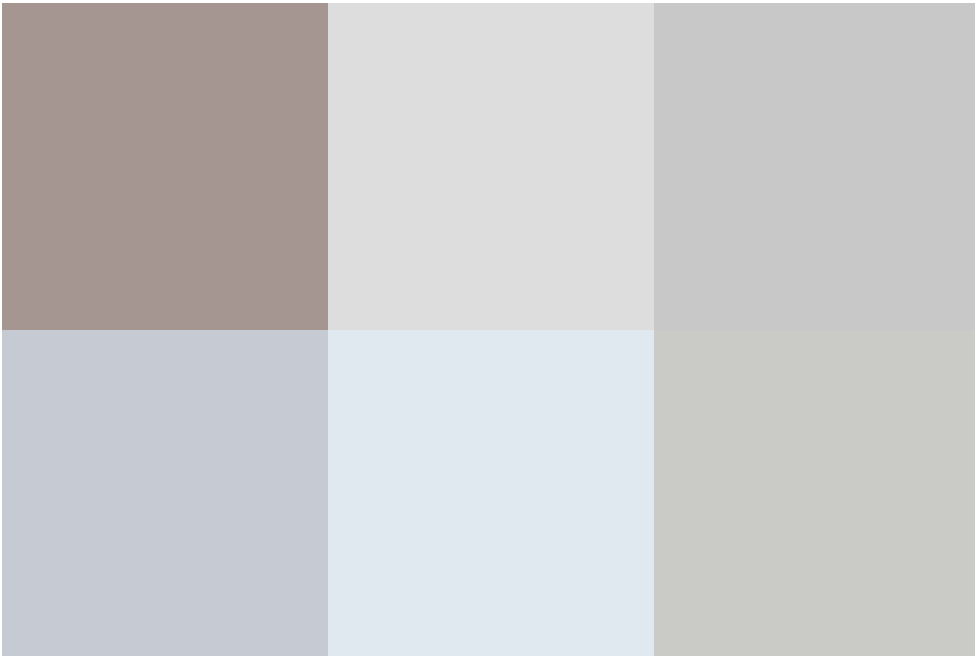
A spacious Park Home, which is situated in the heart of the village of Wroughton. Ideally positioned within walking distance of all local amenities including shops, pubs, café's and the local doctor and dental surgeries. The property does require updating and this has been reflected in the realistic asking price, the property is also conveniently Sold Free of Chain!

The accommodation includes Hallway, a generous sized dual aspect 19' (5.97m) x 15' (4.72m) max Living Room, fitted Kitchen with convenient door to side, Bathroom with three piece suite and Two double Bedrooms, both with fitted wardrobes.

Further features include Gas Radiator Heating (bottled gas), PVCu Double Glazing, as well as gardens to both sides with seating areas and off road parking space.

This site is only suitable for over 50's. Call now to book your viewing appt, Sole Agents, Richard James.

Council Tax Band: A



## exceptional service

Our team will guide you through the process of buying or selling your home.

We have a team of dedicated sales progressors in place to ensure your purchase or sale runs smoothly through to completion, keeping you in the loop and a close eye on your chain while moving you in as swiftly and smoothly as possible.

- Honest valuations in current market conditions
- Dedicated sales progression team
- Recommended financial advisors
- 5\* service from valuation to completion
- Award winning lettings service
- Ahead of the game marketing strategies
- Professional photography
- Social media marketing
- Top listings on Rightmove and Zoopla

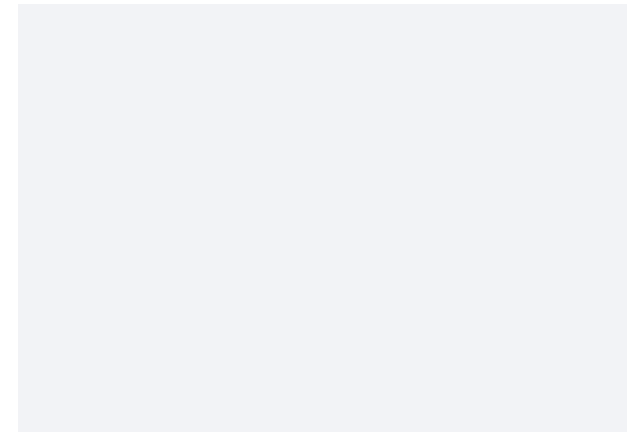
---

call us for a free  
valuation on your  
property

---

[wroughton@richardjames.uk](mailto:wroughton@richardjames.uk)

High Street | Wroughton | SN4 9JZ



### Richard James & their clients give notice that:

1. These sales and particulars do not constitute any part of an offer of contract, and are for the guidance of prospective purchasers only and should not be relied on as statements of fact.
2. No representations are made in these particulars as to the condition of the property or as to whether any service or facilities are in good working order.
3. All Measurements are approximate.

