



Wordsworth Close, Royal Wootton Bassett, SN4 8HJ

Guide Price **£235,000**

**richard
james**



 3  1  1

* energy efficiency
rating

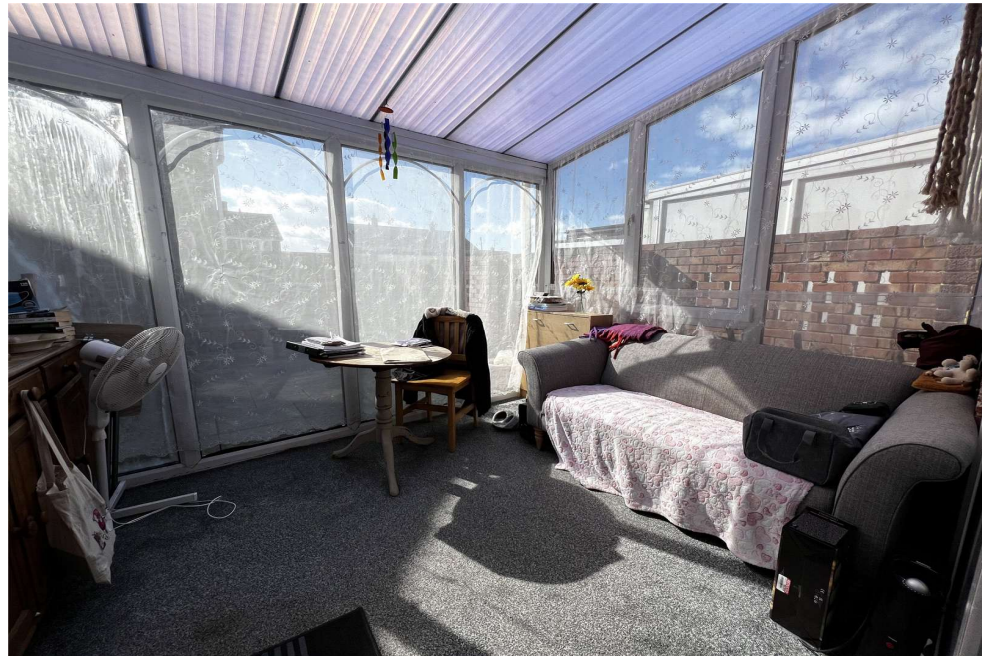
C

NO CHAIN!!!

A great opportunity to acquire a THREE bedroom house in Royal Wootton Bassett BOASTING a larger than average corner plot plus a GARAGE and driveway.

The house offers a living room, conservatory, kitchen and refurbished bathroom. Upstairs are three bedrooms.

Open to offers the house is a brilliant project for someone looking to put their own mark on something. Shops, primary and secondary school and bus stops are available close by. The gardens offer decent privacy and an internal viewing is strongly recommended.









call us for a free
valuation on your property

rwb@richardjames.uk

High Street | Royal Wootton Bassett | SN4 7AY

exceptional service

Our team will guide you through the process of buying or selling your home.

We have a team of dedicated sales progressors in place to ensure your purchase or sale runs smoothly through to completion, keeping you in the loop and a close eye on your chain while moving you in as swiftly and smoothly as possible.

- Honest valuations in current market conditions
- Dedicated sales progression team
- Recommended financial advisors
- 5* service from valuation to completion
- Award winning lettings service
- Ahead of the game marketing strategies
- Professional photography
- Social media marketing
- Top listings on Rightmove and Zoopla

call us for a free
valuation on your property

rwb@richardjames.uk

High Street | Royal Wootton Bassett | SN4 7AY

Richard James & their clients give notice that:

1. These sales and particulars do not constitute any part of an offer of contract, and are for the guidance of prospective purchasers only and should not be relied on as statements of fact.
2. No representations are made in these particulars as to the condition of the property or as to whether any service or facilities are in good working order.
3. All Measurements are approximate.

rightmove 