



Blunsdon Road, Haydon Wick, SN25 1JD

Offers Over £340,000

richard james



Blunsdon Road

Haydon Wick

Freehold | EPC Rating - C



Tucked away in the heart of Haydon Wick, North Swindon you'll find this gorgeous, three bedroom detached character home. Beautifully kept and modernised by the current owners while maintaining its charm, it's in move in condition.

The home comprises; entrance hall, open plan lounge diner with log burner and two sets of French doors to the garden. The kitchen has been refitted to a high standard, with wood worktops, Belfast sink, integrated appliances and a breakfast bar. There is also a large cloakroom downstairs with fitted storage under the stairs.

Heading upstairs, you'll find the modern family bathroom and three bedrooms. The master is truly impressive. Brimming with character, featuring a vaulted ceiling and exposed beams it really is a stand out in the home.



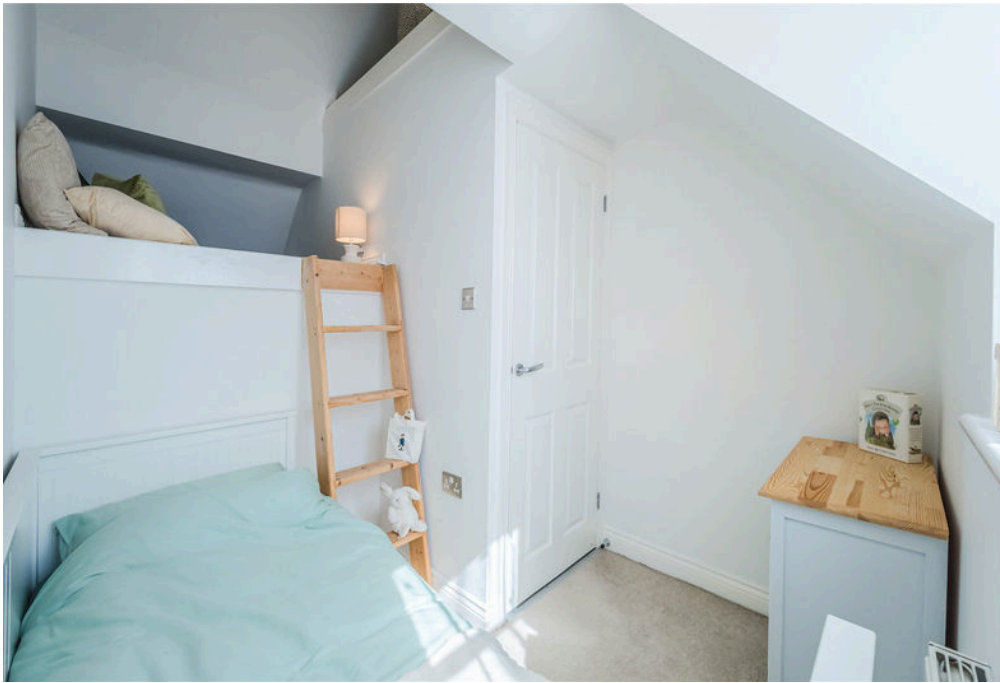
Externally, the rear garden allows for simple maintenance all year round, with artificial grass and a patio area. Ample driveway parking for multiple vehicles and a single garage complete this fantastic home.

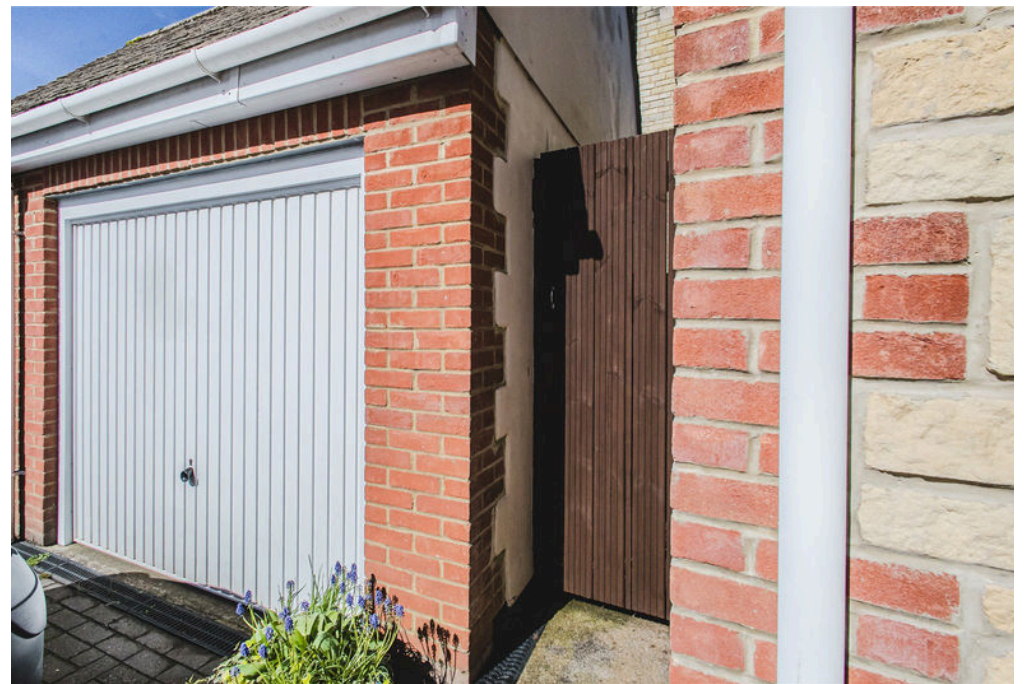
Call now to arrange your viewing!

epc: C
council tax: D

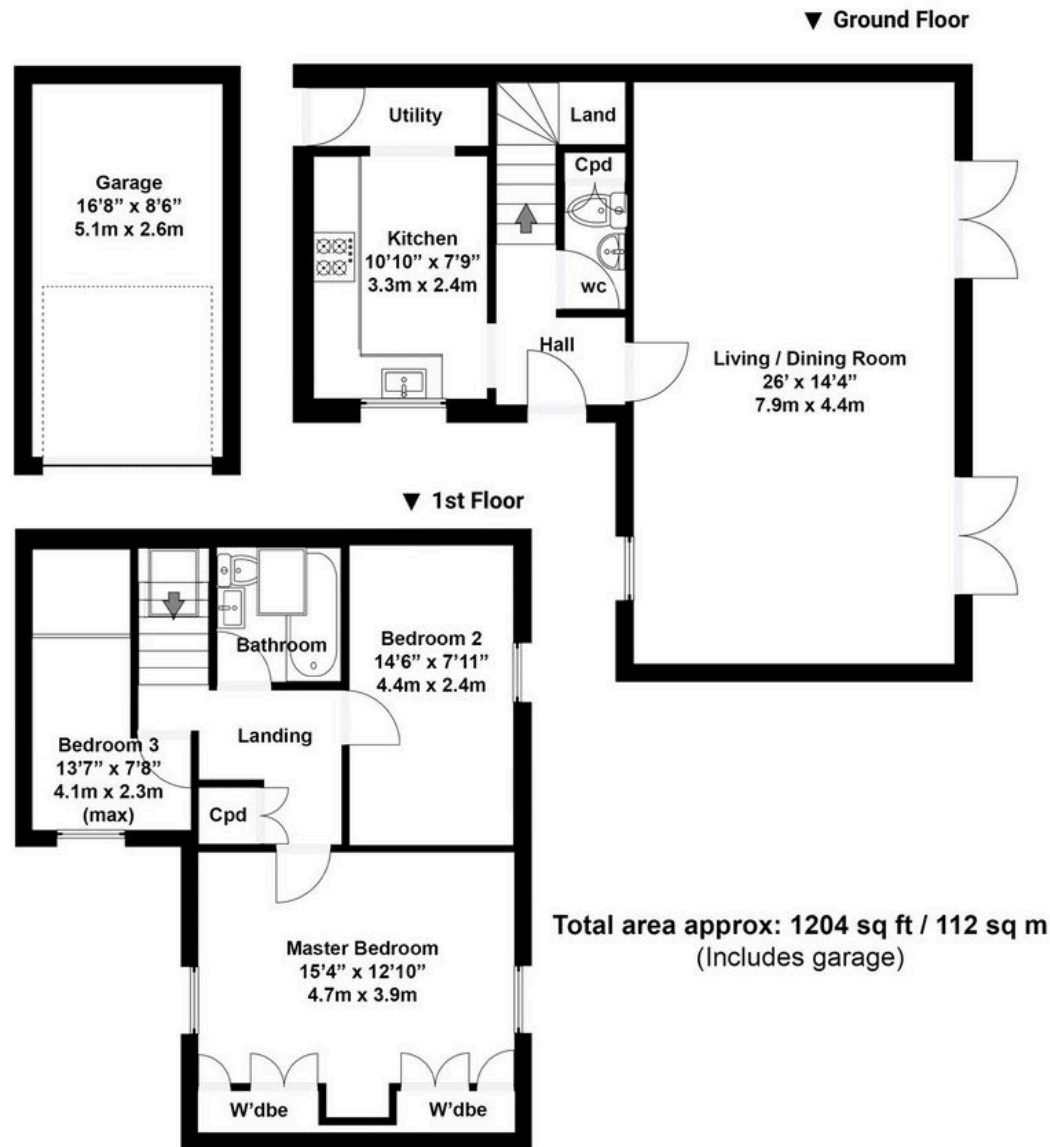








Floorplan



N.B. Whilst care has been taken with this floor plan to reflect an accurate likeness of the property it should only be used as an approximation for illustrative purposes only, specifically no guarantee is given and all should not be relied on solely as a basis of valuation. Plan not to scale.

01793 261 262

northswindon@richardjames.uk

Gemini House | Hargreaves Road | Swindon | SN25 5AZ

richard james

richardjames.uk