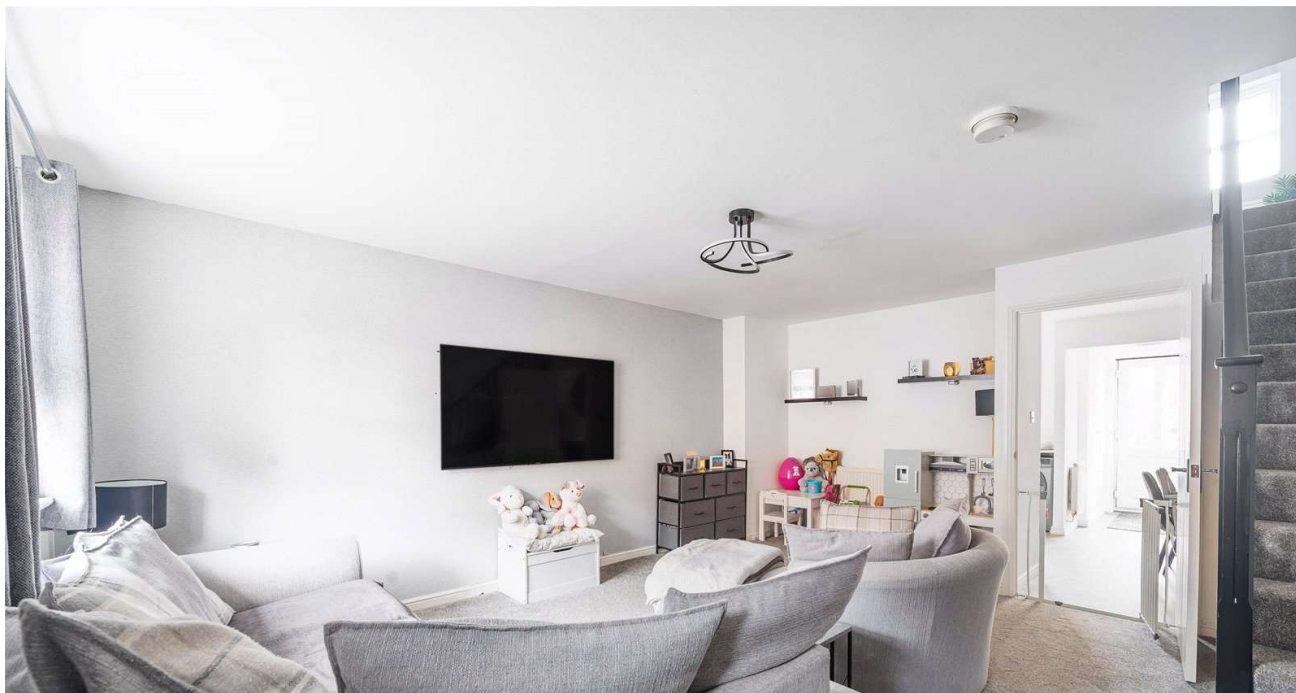


richard
james



19 Mason Road, Abbey Meads, Swindon, SN25 4WR

Asking Price £280,000



IN A NUTSHELL

 **3**  **2**  **1**

- THREE BEDROOMS
- GENEROUS LIVING ROOM
- DOWNSTAIRS WC
- EN SUITE TO MASTER
- LOW MAINTENANCE REAR GARDEN
- GARAGE AND PARKING

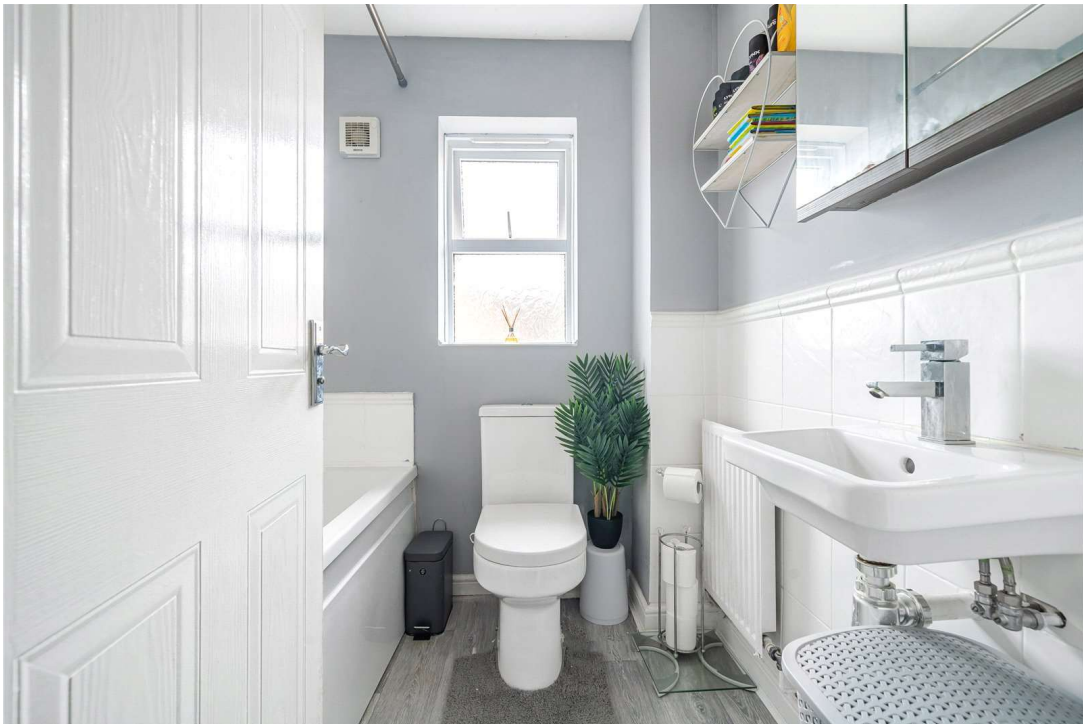
This three bedroom end terrace home can be found situated in Abbey Meads, North Swindon within walking distance of ample local amenities such as a shop, dentist, vets and pubs as well as being a short distance from the ever popular Orbital retail park.

The property comprises; spacious living room, integrated kitchen diner and WC whilst upstairs you'll find a single bedroom, double bedroom, family bathroom and master boasting a shower room en suite. The property also benefits from a low maintenance rear garden laid to decking and patio with a garage and parking also included with this fantastic home.

Get in touch for your chance to view!

EPC: C

Council Tax: D



EXCEPTIONAL SERVICE

Our team will guide you through the process of buying or selling your home. We have a team of dedicated sales progressors in place to ensure your purchase or sale runs smoothly through to completion, keeping you in the loop and a close eye on your chain while moving you in as swiftly and smoothly as possible.

-  Honest valuations in current market conditions
-  Dedicated sales progression team
-  Recommended financial advisors
-  5* service from valuation to completion
-  Award winning lettings service
-  Ahead of the game marketing strategies
-  Professional photography
-  Social media marketing
-  Top listings on Rightmove and Zoopla

CALL US FOR A FREE VALUATION ON YOUR PROPERTY...

**richard
james**

101 Victoria Road | Old Town | Swindon | SN1 3BD

| 01793 311 042

dannyhale@richardjames.uk

Find me on [incentivised.com/DannyHale](https://www.incentivised.com/DannyHale)

Approximate Area = 831 sq ft / 77.2 sq m

For identification only - Not to scale



Floor plan produced in accordance with RICS Property Measurement Standards incorporating International Property Measurement Standards (IPMS2 Residential). © n3chem 2024. Produced for Richard James. REF: 1117878

Richard James & their clients give notice that:

1. These sales and particulars do not constitute any part of an offer of contract, and are for the guidance of prospective purchasers only and should not be relied on as statements of fact.
2. No representations are made in these particulars as to the condition of the property or as to whether any service or facilities are in good working order.
3. All Measurements are approximate.

rightmove 
find your happy