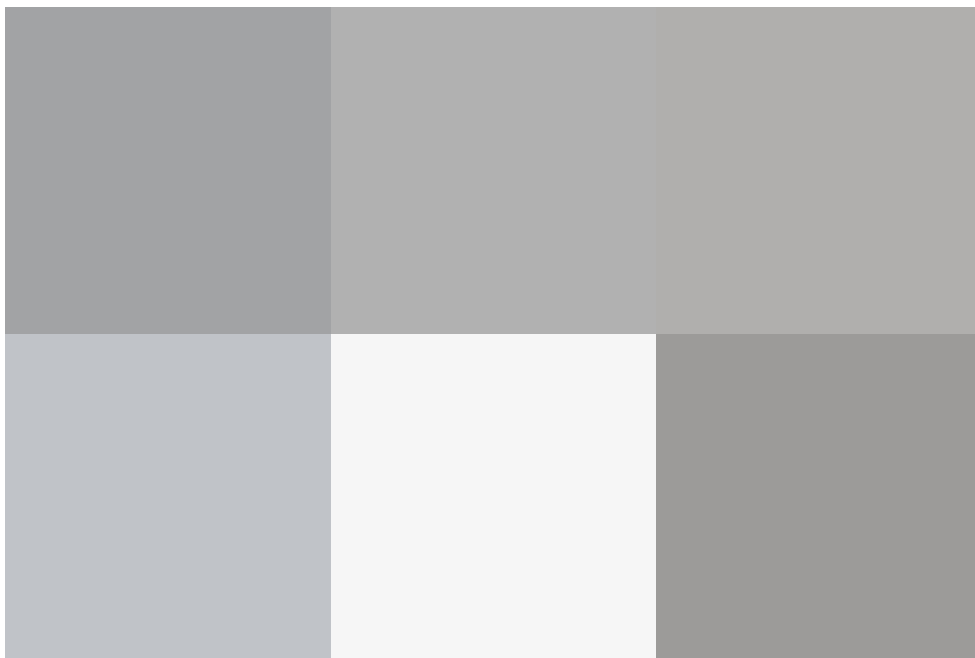
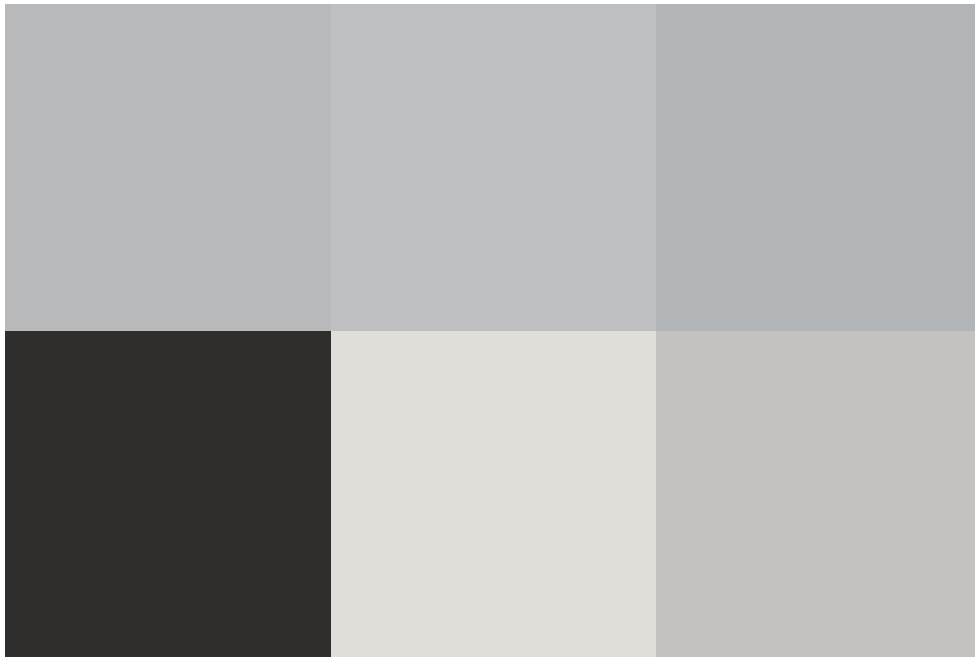


Somerville Road, Walcot, SN3 3AS

offers over **£260,000**



* energy efficiency rating

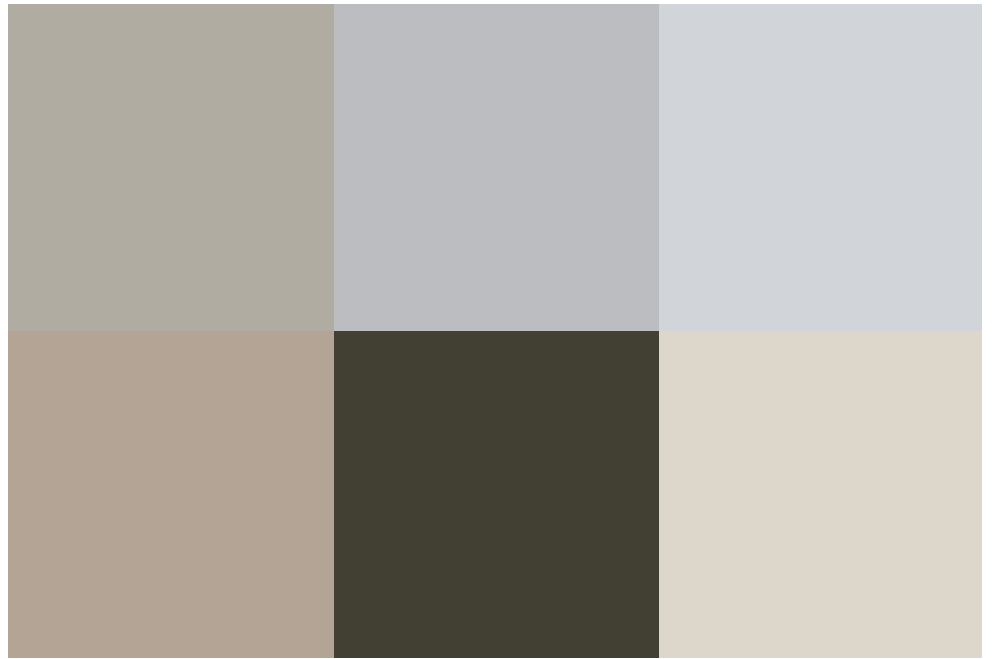
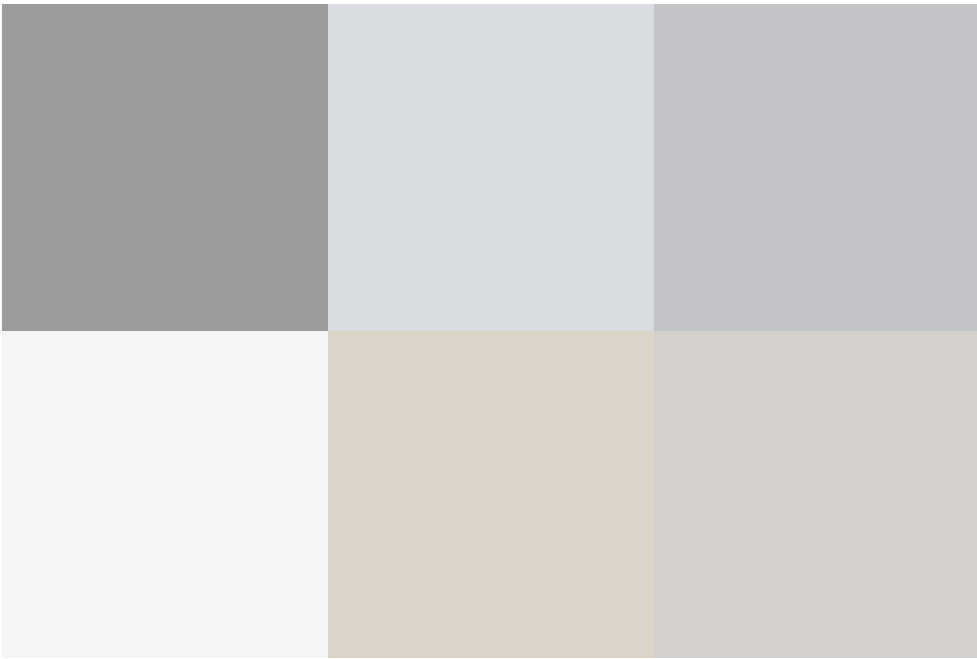
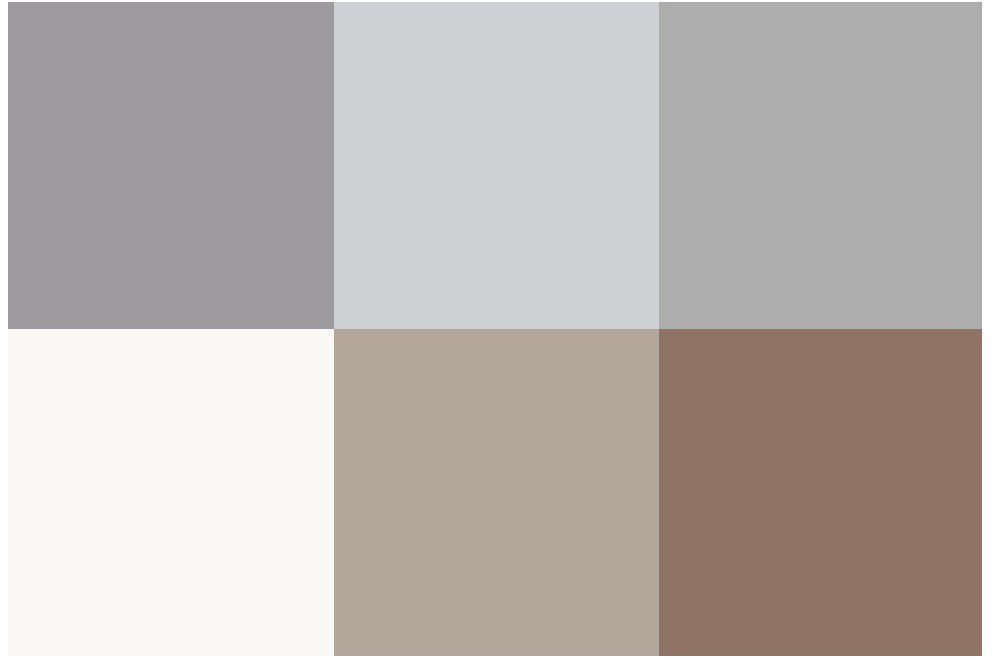
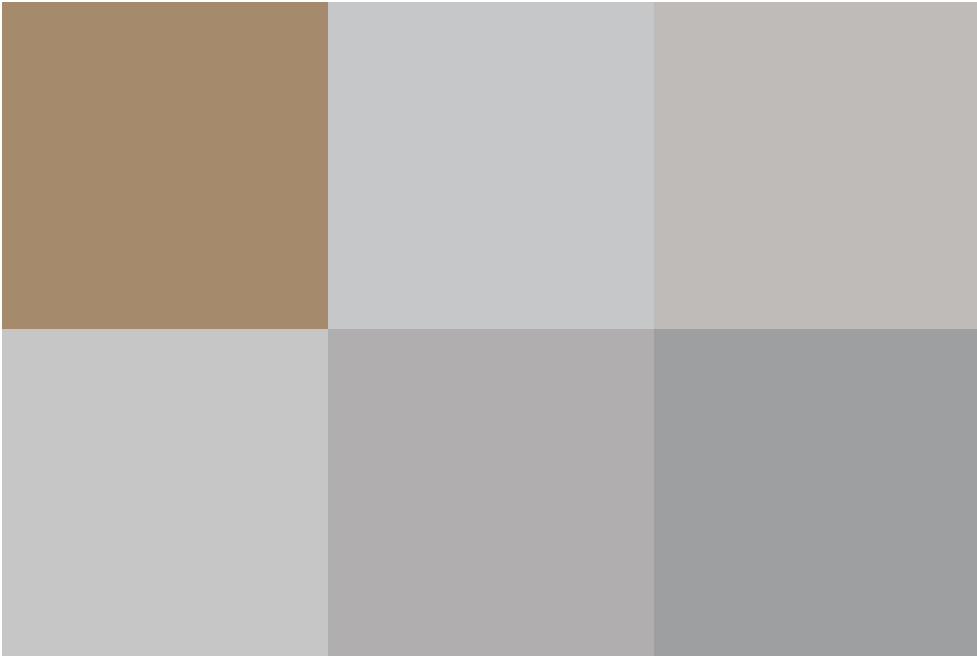
To

-THREE BEDROOMS - HUGE GARDEN - POPULAR LOCATION

Richard James are delighted to welcome to the market this fabulous 3-bedroom semi-detached house! It's modern, well-maintained, and spacious. With a huge rear garden which you will struggle to come across in the area it is perfect for a growing family. Don't miss out on this gem!

Please do call us to arrange your viewings.

•



exceptional service

Our team will guide you through the process of buying or selling your home.

We have a team of dedicated sales progressors in place to ensure your purchase or sale runs smoothly through to completion, keeping you in the loop and a close eye on your chain while moving you in as swiftly and smoothly as possible.

- Honest valuations in current market conditions
- Dedicated sales progression team
- Recommended financial advisors
- 5* service from valuation to completion
- Award winning lettings service
- Ahead of the game marketing strategies
- Professional photography
- Social media marketing
- Top listings on Rightmove and Zoopla

call us for a free
valuation on your
property

eastswindon@richardjames.uk

Grange Drive | Stratton | SN3 4LA

Richard James & their clients give notice that:

1. These sales and particulars do not constitute any part of an offer of contract, and are for the guidance of prospective purchasers only and should not be relied on as statements of fact.
2. No representations are made in these particulars as to the condition of the property or as to whether any service or facilities are in good working order.
3. All Measurements are approximate.

