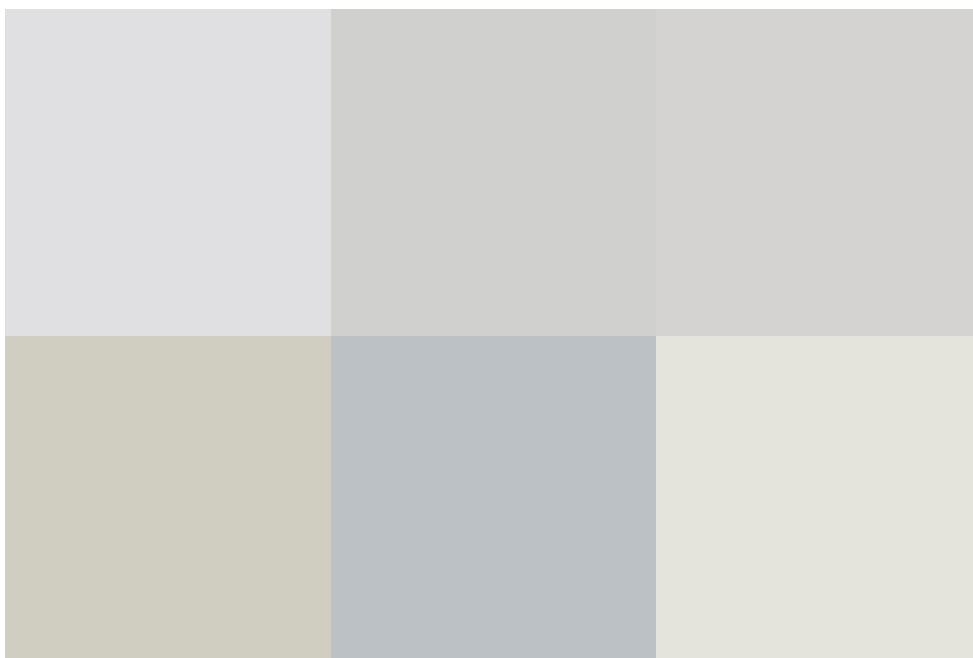
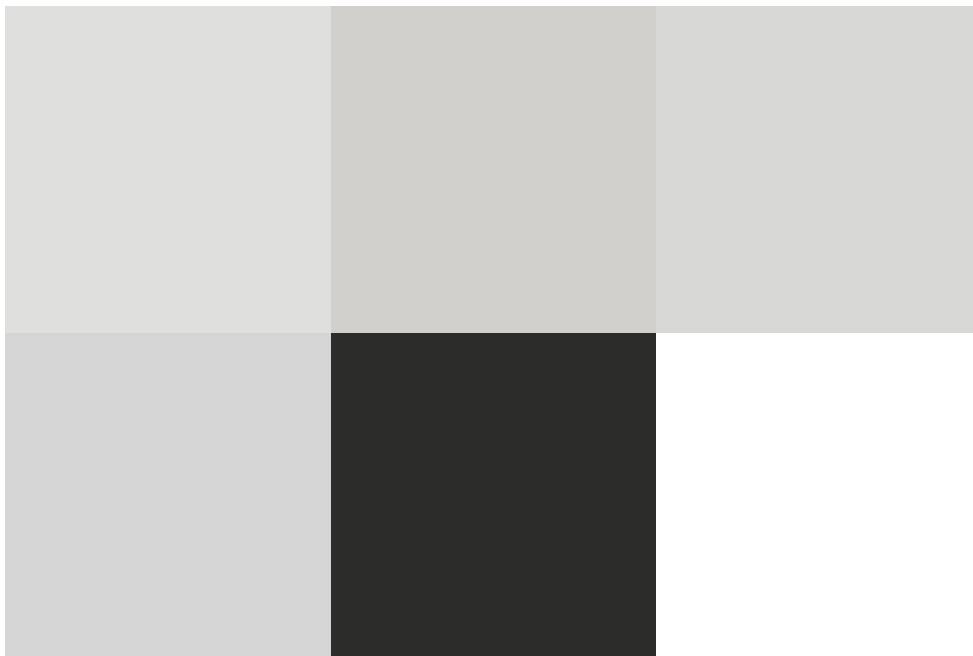


Canberra Road, Alexandra Park, SN4 0TG

guide price **£295,000**



freehold energy efficiency rating

D

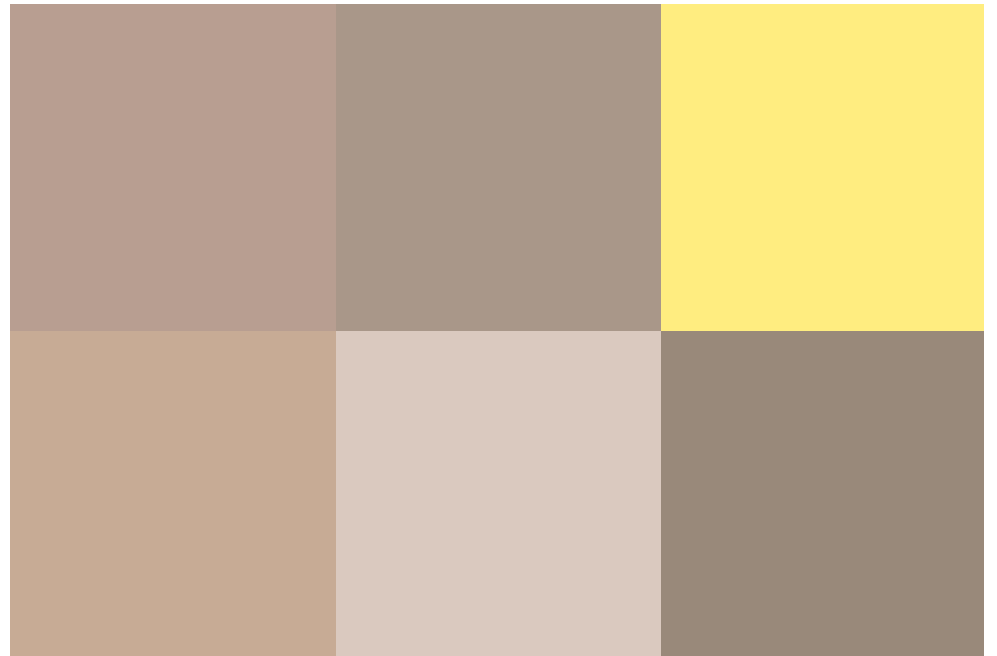
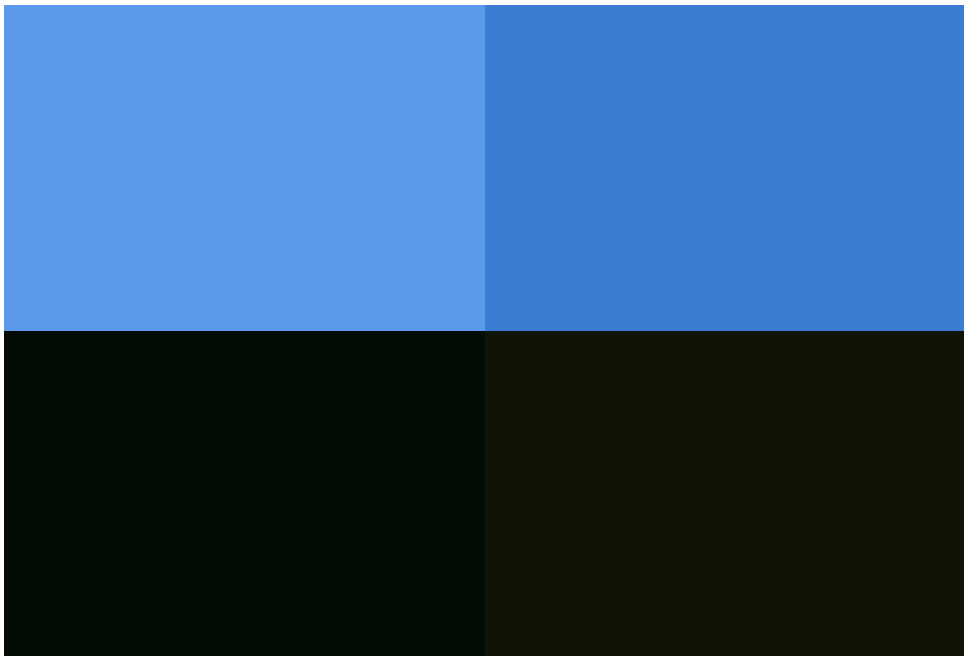
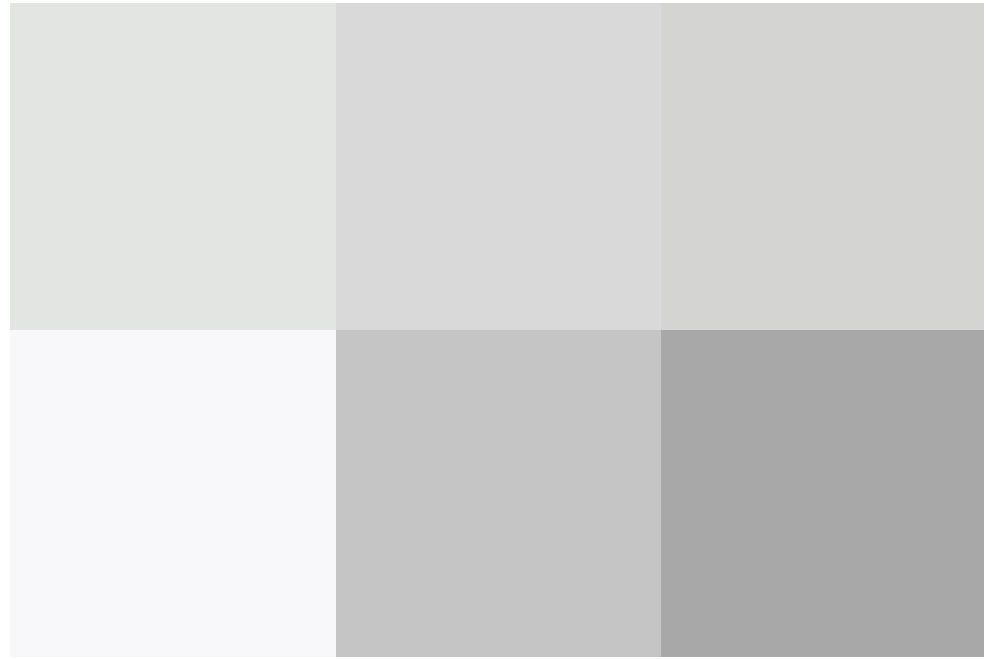
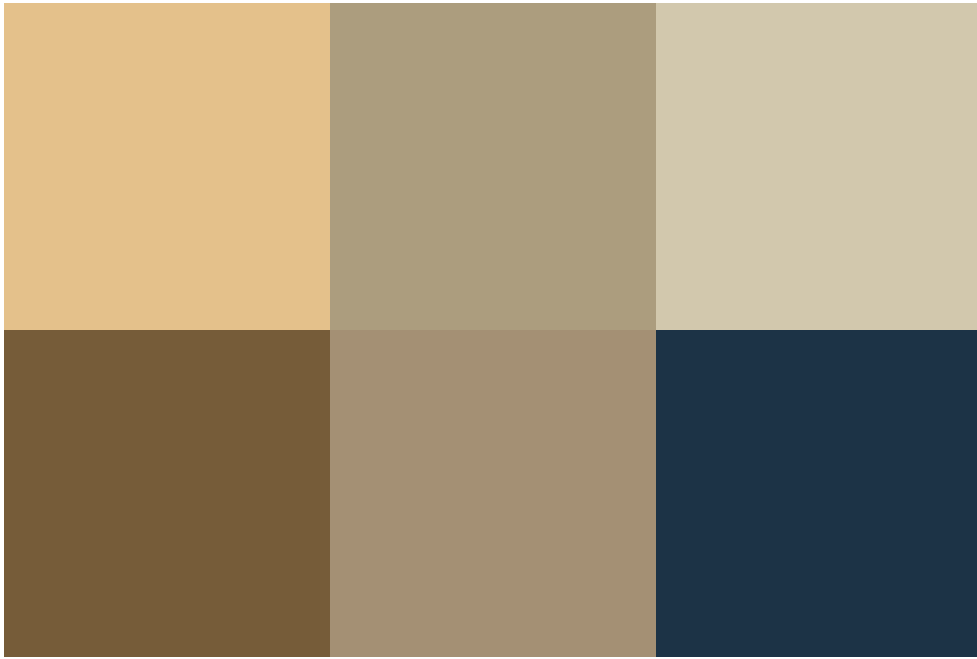
A spacious, end terraced home, situated in the sought after Alexandra Park development, built by messrs. David Wilson Homes. Located just to the South of the village of Wroughton and offering great road links to the M4 Motorway and to Marlborough.

The accommodation comprises; Hall, Sitting Room with log burner and generous Kitchen/Dining Room and Rear Lobby with Cloakroom. With Three spacious Bedrooms and Family Bathroom, with white piece suite.

Further features include a pleasant enclosed Rear Garden with patio and lawn, low maintenance garden enclosed by hedging and two off road parking spaces to the front, PVCu Double Glazing and Gas Radiator Heating.

Viewing recommended by vendors Sole Agents, Richard James.

Council Tax Band: D



exceptional service

Our team will guide you through the process of buying or selling your home.

We have a team of dedicated sales progressors in place to ensure your purchase or sale runs smoothly through to completion, keeping you in the loop and a close eye on your chain while moving you in as swiftly and smoothly as possible.

- Honest valuations in current market conditions
- Dedicated sales progression team
- Recommended financial advisors
- 5* service from valuation to completion
- Award winning lettings service
- Ahead of the game marketing strategies
- Professional photography
- Social media marketing
- Top listings on Rightmove and Zoopla

call us for a free
valuation on your
property

wroughton@richardjames.uk

High Street | Wroughton | SN4 9JZ



Richard James & their clients give notice that:

1. These sales and particulars do not constitute any part of an offer of contract, and are for the guidance of prospective purchasers only and should not be relied on as statements of fact.
2. No representations are made in these particulars as to the condition of the property or as to whether any service or facilities are in good working order.
3. All Measurements are approximate.

