



Hughes Street, Rodbourne, SN2 2ER

offers over **£270,000**

**richard
james**



 3  2  3

* energy efficiency
rating

D

This LARGE EXTENDED three bedroom terrace property is well located on Hughes Street and would suit a range of buyers from first time buyers to families due to its good location, its generous living space, plus its three large bedrooms including a feature master bedroom with en-suite.

This property is well located in Rodbourne just a short walk from Swindon Train Station, the Swindon Designer Outlet, Swindon Town Centre. It also offers excellent access to J16 of the M4.

The ground floor living accommodation comprises; entrance hall with storage, a spacious and open plan lounge/dining room, an extended modern kitchen/diner and the bathroom.

The first floor offers; first floor landing, W.C, a large second bedroom with fitted wardrobes and bedroom three also with fitted wardrobes.

The second floor comprises; landing, a generous master bedroom with dressing area leading to an en-suite shower room.

To the rear is an enclosed rear garden laid to low maintenance patio giving access to the garage.

There is a large detached garage to the rear offering power and lighting plus access via the rear lane.



exceptional service

Our team will guide you through the process of buying or selling your home.

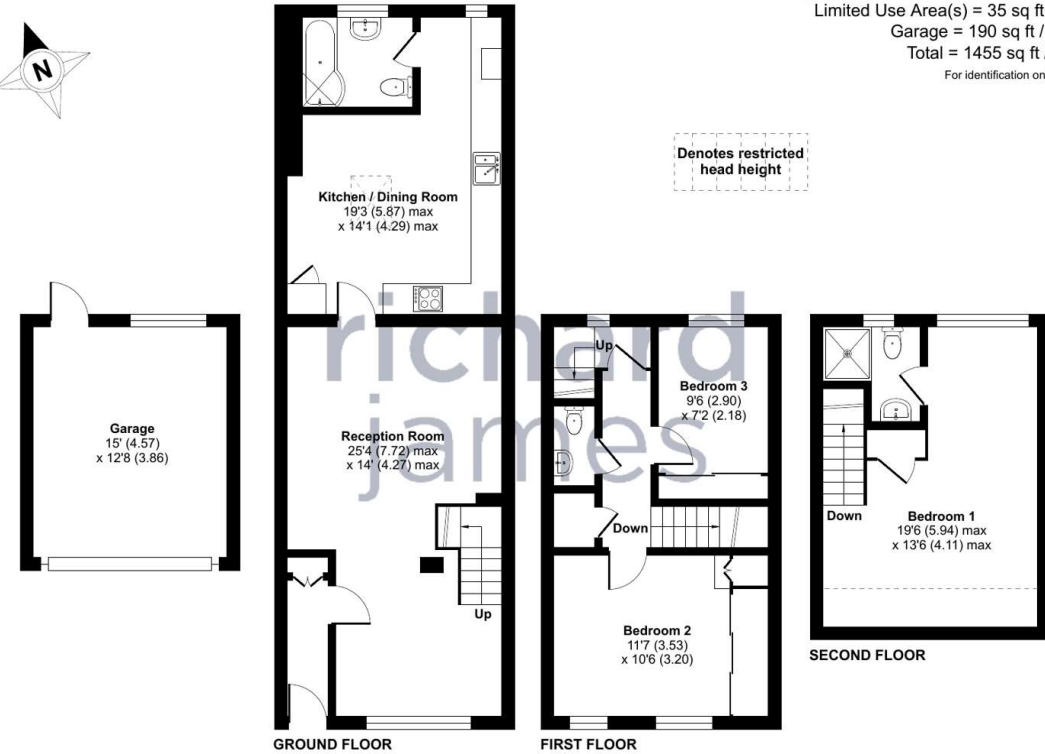
We have a team of dedicated sales progressors in place to ensure your purchase or sale runs smoothly through to completion, keeping you in the loop and a close eye on your chain while moving you in as swiftly and smoothly as possible.

- Honest valuations in current market conditions
- Dedicated sales progression team
- Recommended financial advisors
- 5* service from valuation to completion
- Award winning lettings service
- Ahead of the game marketing strategies
- Professional photography
- Social media marketing
- Top listings on Rightmove and Zoopla

call us for a free
valuation on your
property

westswindon@richardjames.uk

Lucena House | Shaw Village Centre | SN5 5PY



Approximate Area = 1230 sq ft / 114.2 sq m
Limited Use Area(s) = 35 sq ft / 3.2 sq m
Garage = 190 sq ft / 17.6 sq m
Total = 1455 sq ft / 135 sq m
For identification only - Not to scale



Floor plan produced in accordance with RICS Property Measurement Standards incorporating International Property Measurement Standards (IPMS2 Residential). © richcom 2024. Produced for Richard James. REF: 1100715

Richard James & their clients give notice that:

1. These sales and particulars do not constitute any part of an offer of contract, and are for the guidance of prospective purchasers only and should not be relied on as statements of fact.
2. No representations are made in these particulars as to the condition of the property or as to whether any service or facilities are in good working order.
3. All Measurements are approximate.

rightmove