



Dolina Road, Haydon End, Swindon

**Offers Over £280,000**

**richard james**





## Dolina Road

### Haydon End

Freehold | EPC Rating - C



Located in the popular development of Haydon End, North Swindon you'll find this spacious three bedroom town house. With versatile accommodation over three floors, while nearby to the local school and other amenities such as the Orbital retail park, it's ideal for families.

The home comprises; entrance hall, spacious dining room, kitchen and WC. To the first floor you'll find a cloakroom and bedroom three, along with the lounge, complete with a Juliet balcony to the front flooding the room with natural light.

At the top of the home, two further bedrooms. Both of which with fitted cupboards and the master benefiting from an en-suite shower room.





Externally, the rear garden has been mostly laid to artificial grass allowing for easy maintenance. There is also rear access to the garage and driveway parking.

For an ideal family home, call now to arrange a viewing.

EPC: C  
COUNCIL TAX: D

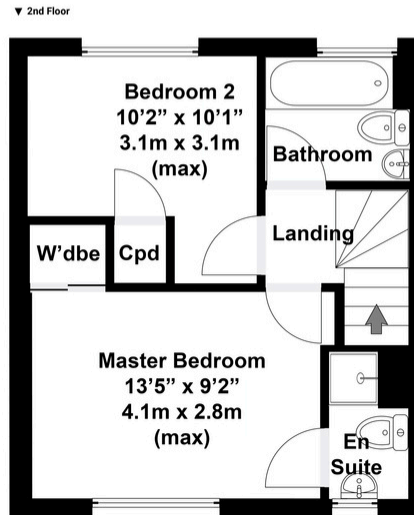
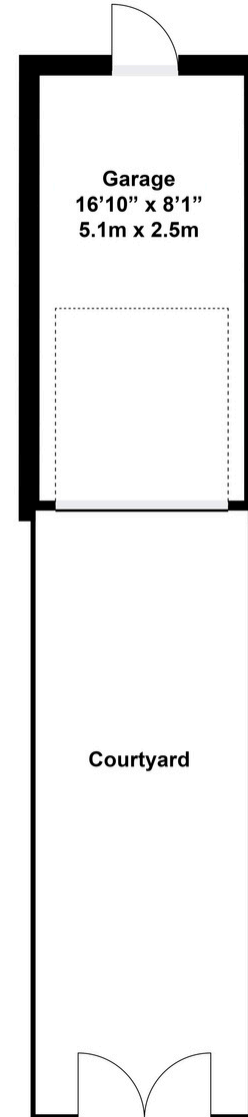
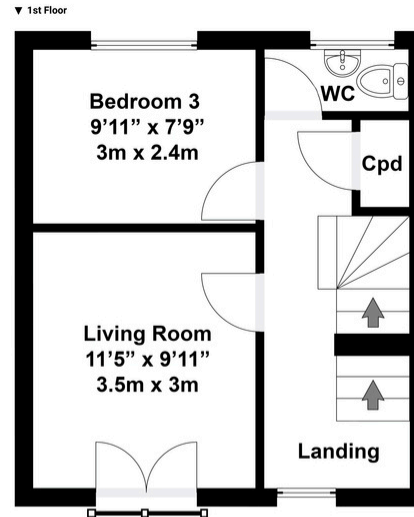
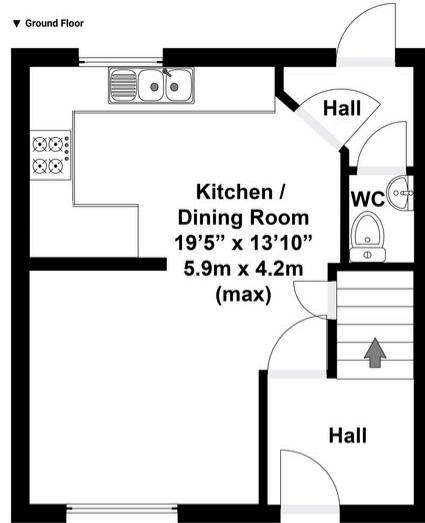








# Floorplan



**Total area approx:**  
1276 sq ft / 119 sq m  
(Includes garage)

N.B. Whilst care has been taken with this floor plan to reflect an accurate likeness of the property it should only be used as an approximation for illustrative purposes only, specifically no guarantee is given and all should not be relied on solely as a basis of valuation. Plan not to scale.

**01793 261 262**

northswindon@richardjames.uk

Gemini House | Hargreaves Road | Swindon | SN25 5AZ

**richard james**

richardjames.uk