



Mathews Close, Tadpole Garden Village, SN25 2UA

**Asking Price £498,999**

**richard james**



## Mathews Close

### Tadpole Garden Village

Freehold | EPC Rating - B

 4
  3
  3

Modern family living. A truly stunning four bedroom detached family home, overlooking The Stray; a gorgeous open space at the heart of Tadpole Garden Village. This stunning home is in immaculate condition and is full of upgrades throughout. Contemporary in design and with bundles of space for family living - this is the perfect place to settle. The ground floor is occupied by a WC and utility cupboard with hallway leading to the full length fitted kitchen/family room with bi-fold doors onto the landscaped rear garden. It's bursting with light from front to back and is the perfect space to entertain - come winter or summer.

Rising to the first floor you'll find the main sitting room with bi-fold doors onto a stunning south facing balcony - overlooking The Stray. You'll also find access onto the roof terrace - a real game changer for outside living. You'll find two of the four bedrooms on this floor too. The remaining two double bedrooms are situated on the top floor and are both complete with ensuites. The rear garden is a good size and well landscaped, boasting privacy and ample space to entertain. To the front you'll find a double driveway in front of the garage.

Situated in the outskirts of North Swindon the area is further complemented by being within walking distance from a Sainsbury Local and a fantastic independent coffee shop.





The Tadpole Garden Village community also stands to be enhanced with the addition of an Arkell's Pub and Tadpole Farm Medical Centre.  
An amazing family home - call us today to book your viewing.

EPC Rating: B  
Council Tax Band: E















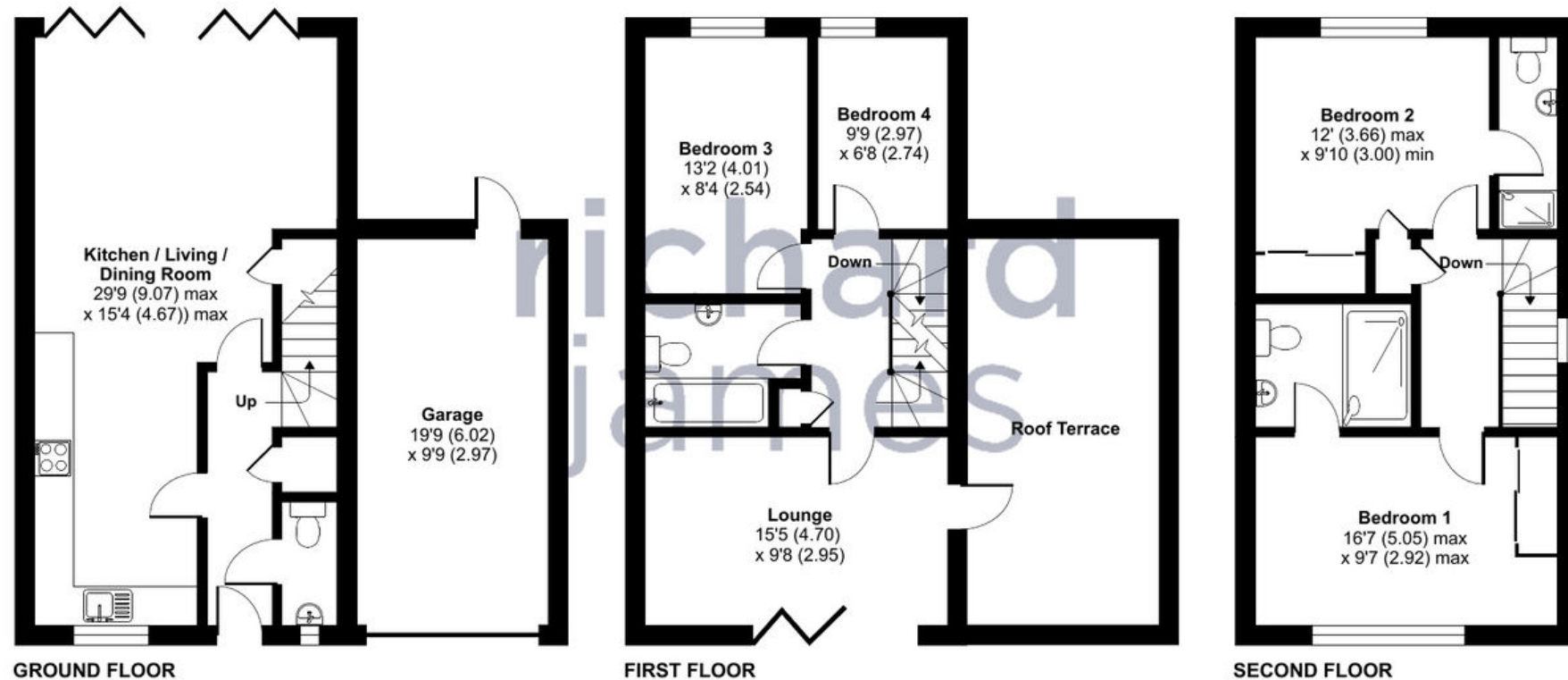
# Floorplan

Approximate Area = 1401 sq ft / 130.2 sq m

Garage = 195 sq ft / 18.1 sq m

Total = 1596 sq ft / 148.3 sq m

For identification only - Not to scale



Floor plan produced in accordance with RICS Property Measurement Standards incorporating International Property Measurement Standards (IPMS2 Residential). © nichecom 2022.  
Produced for Richard James. REF: 901932

**01793 261 262**

[northswindon@richardjames.uk](mailto:northswindon@richardjames.uk)

Gemini House | Hargreaves Road | Swindon | SN25 5AZ

**richard james**

[richardjames.uk](http://richardjames.uk)