



Christie Close, Liden, SN3 6JJ

Offers over **£250,000**

**richard
james**



 3  1  1

freehold energy
efficiency rating

To

THREE BEDROOMS - NEW CARPETS - END OF TERRACE - GARAGE - END OF CHAIN

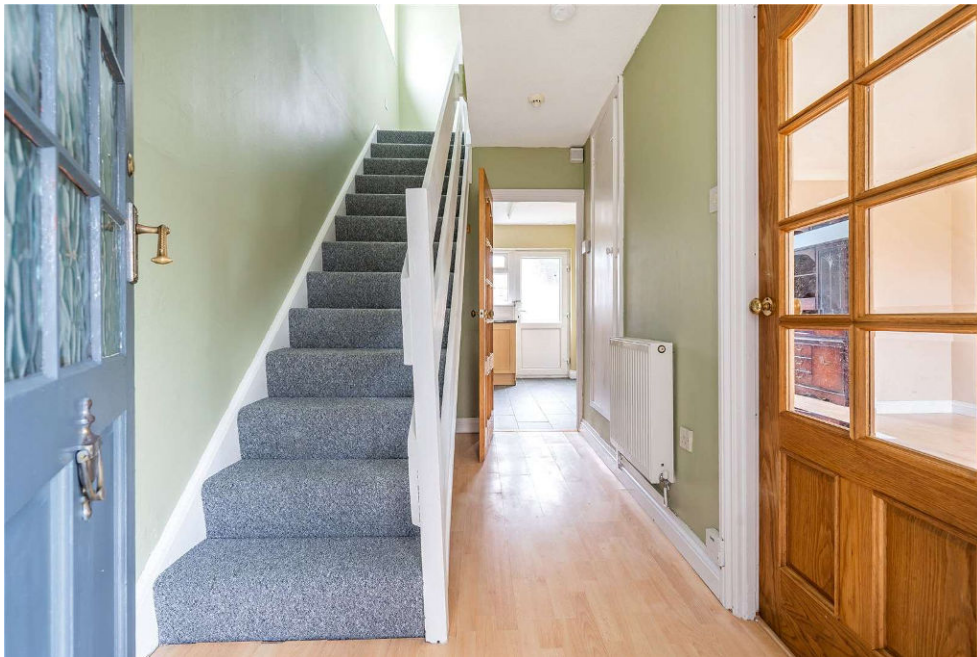
This is a great opportunity for a first time buyer to get on the market with this three bedroom family home in Liden.

The house offers a lounge/diner with kitchen and entrance hall. Upstairs offers three bedrooms and a family bathroom.

The rear garden is a good size and laid to lawn. There is also a garage with this property.

Please call us to arrange a viewing.

•



Approximate Area = 835 sq ft / 77.6 sq m
For identification only - Not to scale

exceptional service

Our team will guide you through the process of buying or selling your home.

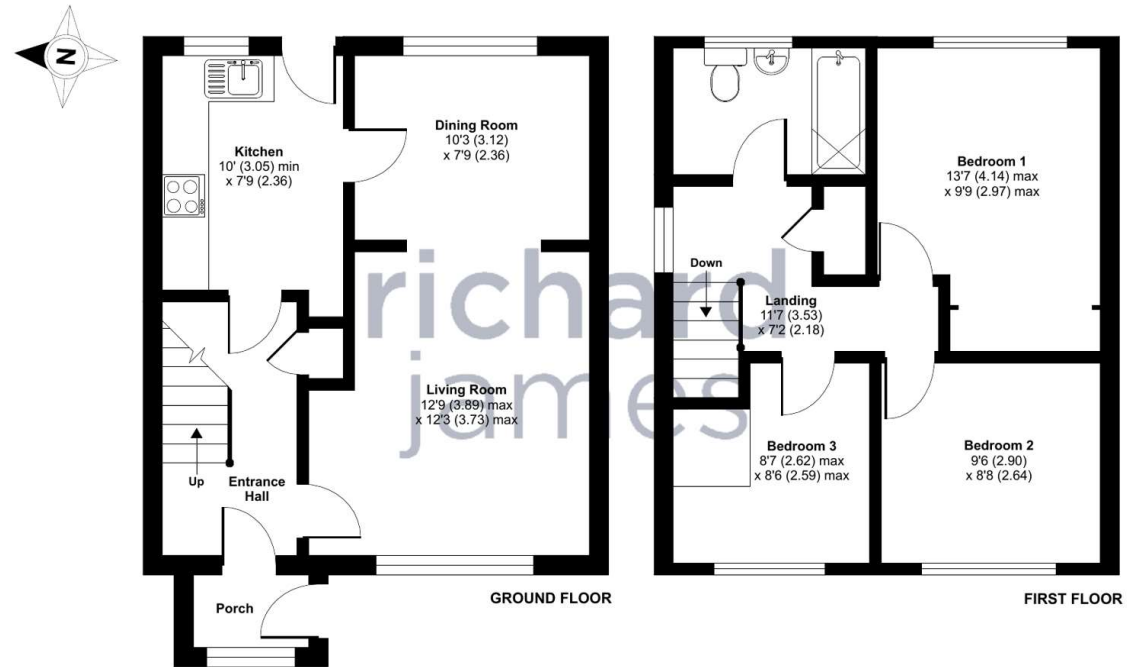
We have a team of dedicated sales progressors in place to ensure your purchase or sale runs smoothly through to completion, keeping you in the loop and a close eye on your chain while moving you in as swiftly and smoothly as possible.

- Honest valuations in current market conditions
- Dedicated sales progression team
- Recommended financial advisors
- 5* service from valuation to completion
- Award winning lettings service
- Ahead of the game marketing strategies
- Professional photography
- Social media marketing
- Top listings on Rightmove and Zoopla

call us for a free
valuation on your
property

eastswindon@richardjames.uk

Grange Drive | Stratton | SN3 4LA



Floor plan produced in accordance with RICS Property Measurement Standards incorporating International Property Measurement Standards (IPMS2 Residential). © richcom 2024. Produced for Richard James. REF: 1106718

Richard James & their clients give notice that:

1. These sales and particulars do not constitute any part of an offer of contract, and are for the guidance of prospective purchasers only and should not be relied on as statements of fact.
2. No representations are made in these particulars as to the condition of the property or as to whether any service or facilities are in good working order.
3. All Measurements are approximate.

rightmove