



Tattershall, Toothill, SN5 8BU

offers over **£375,000**

**richard
james**



freehold energy
efficiency rating

C

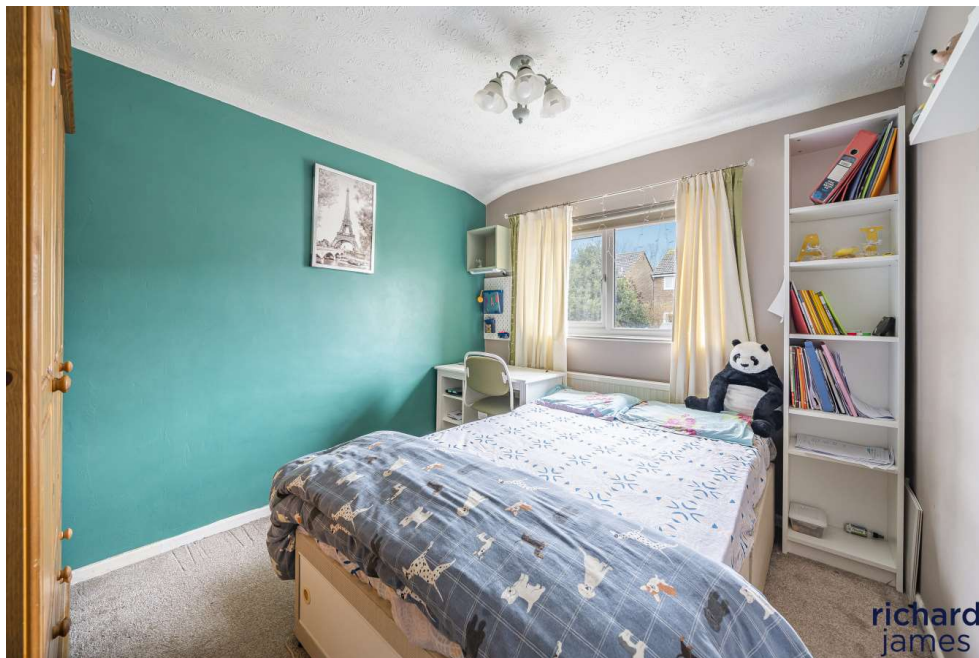
This four bedroom detached property is well located in Toothill, West Swindon and would be perfect for a family due to its good living space, its four generous bedrooms plus its good location close to local schools.

The ground floor living accommodation comprises; entrance porch, entrance hall, a spacious living room, the dining room, a modern kitchen, W.C and garden room.

The first floor offers; first floor landing, a large bay fronted main bedroom with en-suite shower room, the second bedroom, bedroom three plus bedroom four and a modern family bathroom.

To the rear is an enclosed rear garden with a patio leading to raised decked areas with artificial turf plus a generous summer house and a further decked seating area.

The garden provides access to the garage which is a single garage with up and over door power and lighting - half of the garage has been converted to a utility room.



exceptional service

Our team will guide you through the process of buying or selling your home.

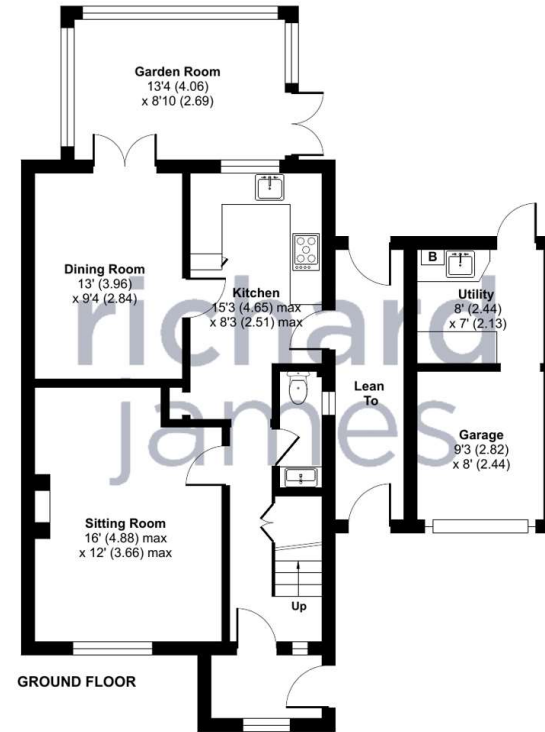
We have a team of dedicated sales progressors in place to ensure your purchase or sale runs smoothly through to completion, keeping you in the loop and a close eye on your chain while moving you in as swiftly and smoothly as possible.

- Honest valuations in current market conditions
- Dedicated sales progression team
- Recommended financial advisors
- 5* service from valuation to completion
- Award winning lettings service
- Ahead of the game marketing strategies
- Professional photography
- Social media marketing
- Top listings on Rightmove and Zoopla

call us for a free
valuation on your
property

westswindon@richardjames.uk

Lucena House | Shaw Village Centre | SN5 5PY



Approximate Area = 1248 sq ft / 116 sq m (excludes lean to)
Garage = 136 sq ft / 12.6 sq m
Total = 1384 sq ft / 128.5 sq m
For identification only - Not to scale



Floor plan produced in accordance with RICS Property Measurement Standards incorporating International Property Measurement Standards (IPMS2 Residential). © richcom 2024. Produced for Richard James. REF: 1088762

Richard James & their clients give notice that:

1. These sales and particulars do not constitute any part of an offer of contract, and are for the guidance of prospective purchasers only and should not be relied on as statements of fact.
2. No representations are made in these particulars as to the condition of the property or as to whether any service or facilities are in good working order.
3. All Measurements are approximate.

rightmove