



Eastlake, Tadpole Garden Village, SN25 2RY

Offers Over £360,000

richard james



Eastlake

Tadpole Garden Village

Freehold | EPC Rating - B



Tucked away in the heart of Tadpole Garden Village, North Swindon sits this well presented 3 bed semi-detached home. The home has been excellently looked after by the current owners and offers spacious living.

On entering the home, you are greeted by a front hall leading to the cloakroom, spacious living room and large kitchen diner. The kitchen is the heart of this home.

With a modern finish, a range of integrated appliances and plenty of space for a good size dining table it's great for entertaining.

Upstairs, you'll find three bedrooms and the family bathroom with the master boasting the luxury of an en-suite shower room.



Externally, there is a generous rear garden that has been laid to lawn along with a single garage and parking for multiple vehicles to the side.

Call now to arrange your viewing!

EPC: B
COUNCIL TAX: D

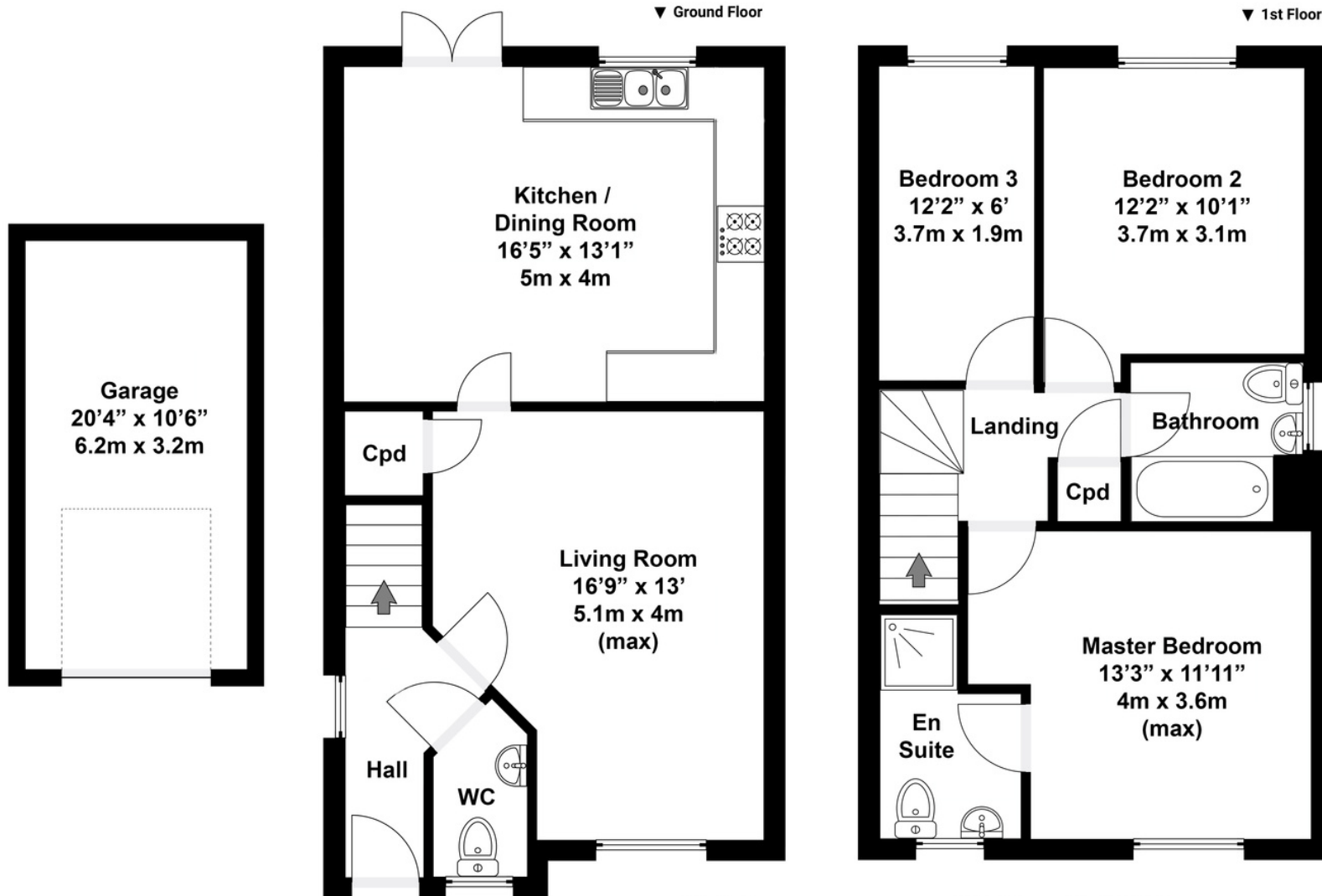








Floorplan



Total area approx: 1167 sq ft / 108 sq m
(Includes garage)

N.B. Whilst care has been taken with this floor plan to reflect an accurate likeness of the property it should only be used as an approximation for illustrative purposes only, specifically no guarantee is given and all should not be relied on solely as a basis of valuation. Plan not to scale.

01793 261 262

northswindon@richardjames.uk

Gemini House | Hargreaves Road | Swindon | SN25 5AZ

richard james

richardjames.uk