



Highdown Way, St Andrews Ridge, SN25 4YD

Asking Price £450,000

richard james



Highdown Way

St Andrews Ridge

Freehold | EPC Rating - D



Introducing a stunning four-bedroom detached home situated in the highly sought-after location of St Andrews Ridge in North Swindon. This impressive property boasts a modern and stylish kitchen diner complete with a utility area and has been extended to offer even more space for the growing family.

As you step through the door, you are greeted by a light and airy hallway leading you to a spacious lounge, perfect for unwinding after a long day. The separate study provides the perfect space for those working from home or a playroom for the kids.

Upstairs, you will find four good size bedrooms with the master bedroom boasting a modern en-suite bathroom. The remaining bedrooms share a family bathroom. Externally, the home also has plenty of driveway parking and a sunny rear garden.





St Andrews Ridge is a highly sought-after location, with excellent local amenities, including shops, schools, and parks, all within easy reach. This property is a must-see for those seeking a modern and stylish family home in a desirable location.

EPC - D
COUNCIL TAX BAND - E





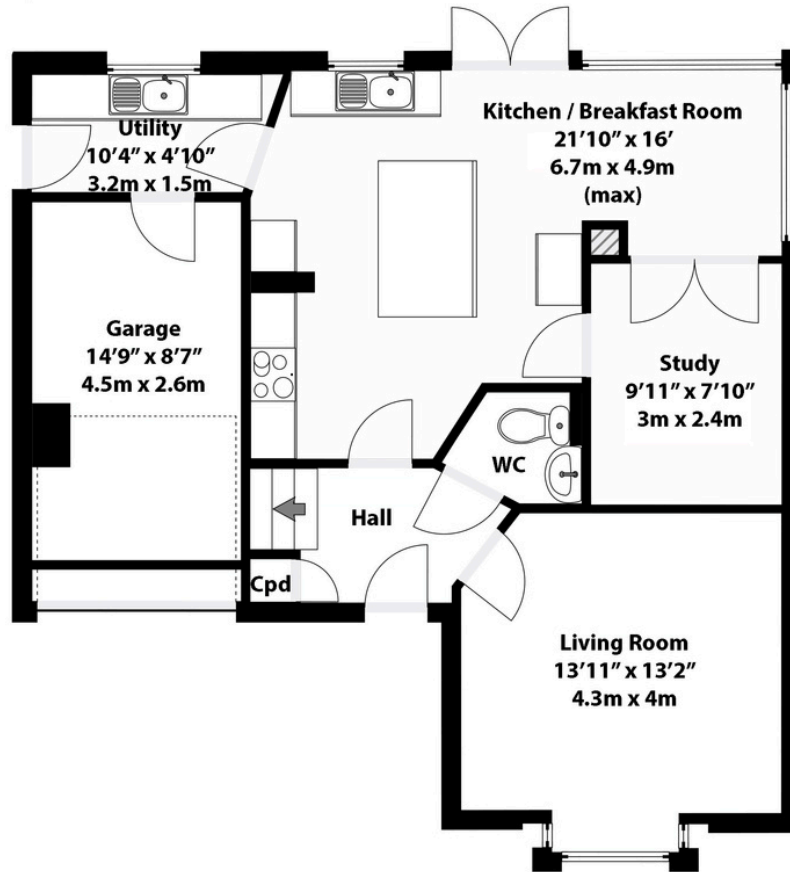




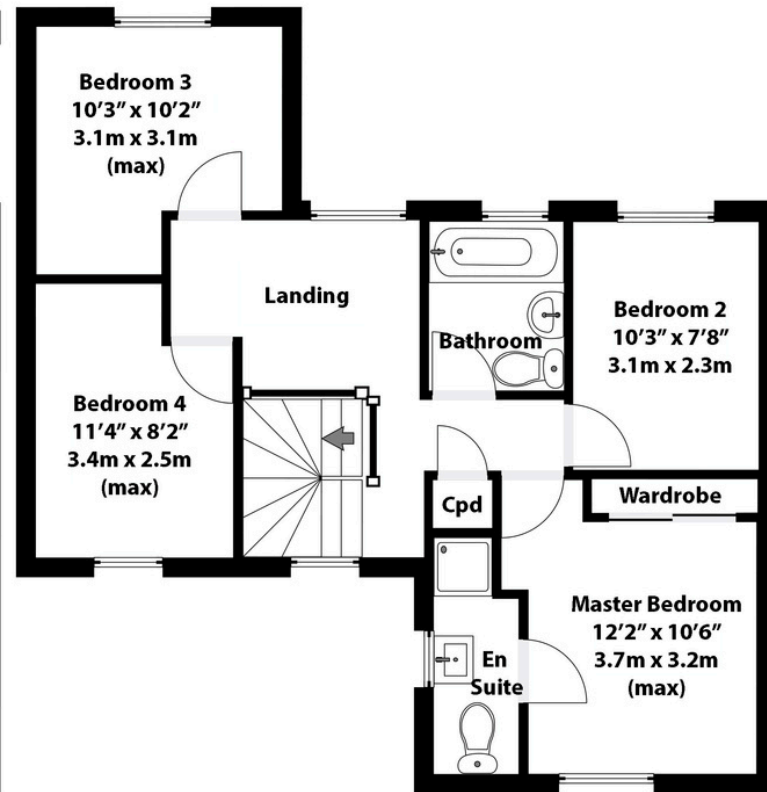
Floorplan

Total area approx: 1335 sq ft / 124 sq m

▼ Ground Floor



▼ 1st Floor



N.B. Whilst care has been taken with this floor plan to reflect an accurate likeness of the property it should only be used as an approximation for illustrative purposes only, specifically no guarantee is given and all should not be relied on solely as a basis of valuation. Plan not to scale.

01793 261 262

northswindon@richardjames.uk

Gemini House | Hargreaves Road | Swindon | SN25 5AZ

richard james

richardjames.uk