



Chamberlain Close

£365,000

richard james



Chamberlain Close

Carterton

Freehold



We are pleased to bring to market a brand new development of four, three bedroom semi-detached homes featuring a single car port and driveway.

The property boasts a spacious kitchen/dining room with integrated appliances and a large living room with double doors leading onto the turfed rear garden.

Upstairs, there are two double bedroom, a single room which would also make ample space for a study and family bathroom. The master bedroom offers a generously sized private en-suite.

Externally this property features an EV point, Air-source heat pump, together with an external light fitted to the front and rear access to the non-over-looked garden.

Whether you're a first time buyer or you're looking for the ideal home to downsize too, these properties will fit all your needs.

Carterton is the second largest town based in West Oxfordshire and is located very close to it's neighbouring town of Witney. The town lies on the edge of the Thames Valley and is close to the Cotswold area of outstanding natural beauty.

The town centre now offers a number of large supermarkets, independent retailers, eateries, a modern leisure centre with swimming pool along with a number of primary schools and secondary schools.

For any enquiries, Please contact Richard James Land and New Homes office.

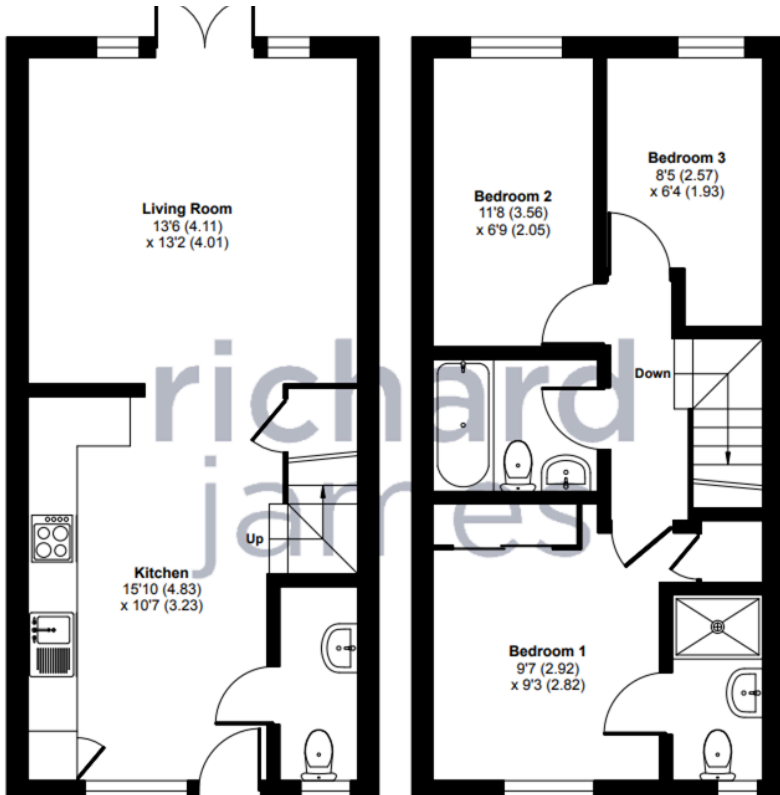






Floorplan

For identification only - Not to scale



Richard James & their clients give notice that:

1. These sales and particulars do not constitute any part of an offer of contract, and are for the guidance of prospective purchasers only and should not be relied on as statements of fact.
2. No representations are made in these particulars as to the condition of the property or as to whether any service or facilities are in good working order.
3. All Measurements are approximate.

Exceptional Service

Our team will guide you through the process of buying or selling your home.

We have a team of dedicated sales progressors in place to ensure your purchase or sale runs smoothly through to completion, keeping you in the loop and a close eye on your chain, while moving you in as swiftly and smoothly as possible.

- Honest valuations in current marketing conditions
- Dedicated sales progression team
- Recommended financial advisors
- 5* service from valuation to completion
- Award winning lettings service
- Ahead of the game marketing strategies
- Professional photography
- Social Media marketing
- Top listings on Rightmove, Zoopla and Boomin

Richard James Land and New Homes

01793 688 705

Newhomes@richardjames.uk

Gemini House | Hargreaves Road | Swindon | SN25 5AZ

richard james

richardjames.uk