



Hatherall Close, Stratton, SN3 4LQ

guide price **£465,000**

**richard
james**



 4  2  2

* energy efficiency
rating

4 BEDROOMS - DETACHED - DRIVEWAY PARKING - STRATTON - LANDSCAPED GARDEN - INTEGRAL GARAGE

This is a beautiful four bedroom detached home in Stratton which is the perfect family home!

Downstairs boasts a large living room, dining room, downstairs cloakroom, kitchen with ample space for dining, welcoming entrance hall and the integral garage.

The first floor is home to all four bedrooms with the master benefiting from the en-suite. The main family bathroom is also on this floor. Three of the four bedrooms also provide built in storage.

Externally the property has a beautifully landscaped rear garden along with driveway parking to the front.

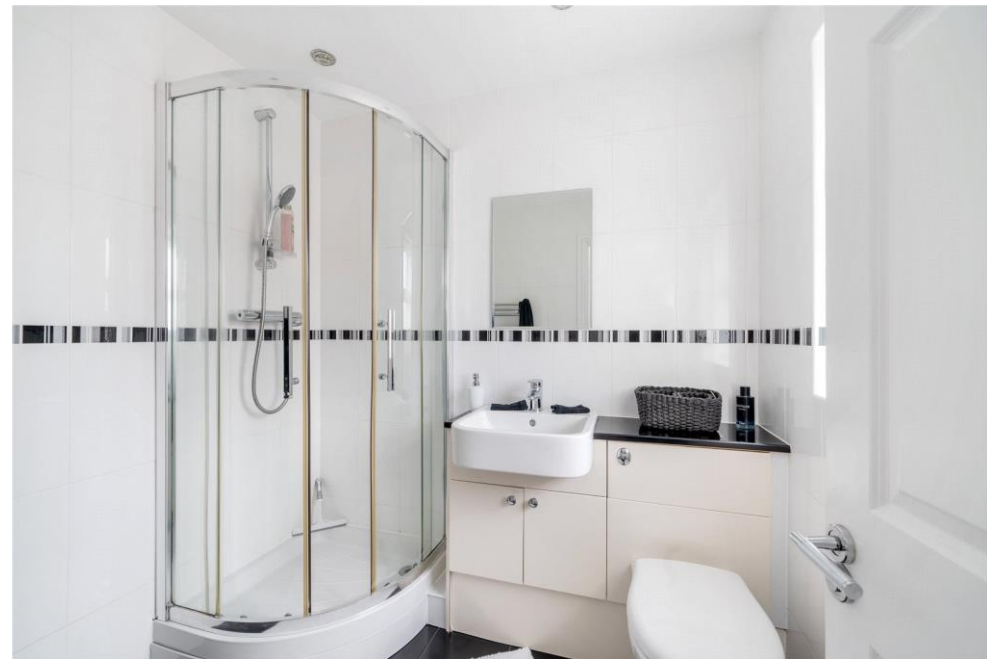
Please do call us to arrange your viewings.











call us for a free
valuation on your property

eastswindon@richardjames.uk

Grange Drive | Stratton | SN3 4LA

exceptional service

Our team will guide you through the process of buying or selling your home.

We have a team of dedicated sales progressors in place to ensure your purchase or sale runs smoothly through to completion, keeping you in the loop and a close eye on your chain while moving you in as swiftly and smoothly as possible.

- Honest valuations in current market conditions
- Dedicated sales progression team
- Recommended financial advisors
- 5* service from valuation to completion
- Award winning lettings service
- Ahead of the game marketing strategies
- Professional photography
- Social media marketing
- Top listings on Rightmove and Zoopla

call us for a free
valuation on your property

eastswindon@richardjames.uk

Grange Drive | Stratton | SN3 4LA

Richard James & their clients give notice that:

1. These sales and particulars do not constitute any part of an offer of contract, and are for the guidance of prospective purchasers only and should not be relied on as statements of fact.
2. No representations are made in these particulars as to the condition of the property or as to whether any service or facilities are in good working order.
3. All Measurements are approximate.

rightmove 