



John Ruskin Road, Tadpole Garden Village, SN25 2PS

Offers Over £350,000

richard james



John Ruskin Road

Tadpole Garden Village

Freehold | EPC Rating - B



*** INVESTORS ONLY ***

A beautifully presented THREE bedroom semi-detached home situated in the highly desirable Tadpole Garden Village, North Swindon.

This spacious, light and airy property has been finished to a high standard throughout and offers modern living accommodation, comprising of; Entrance hall, downstairs WC, kitchen with full goods, open plan lounge/diner with bi-folding doors leading out to a well maintained, fully enclosed rear garden.

To the first floor there is a master double bedroom with en-suite shower room and fitted wardrobes, second smaller double bedroom with floor to ceiling window, further single bedroom and family bathroom with shower over bath.

To the rear is a great sized garden, laid mostly to lawn with ample patio space. You'll find ample driveway parking to side in front of the garage. Call us today to book your viewing.

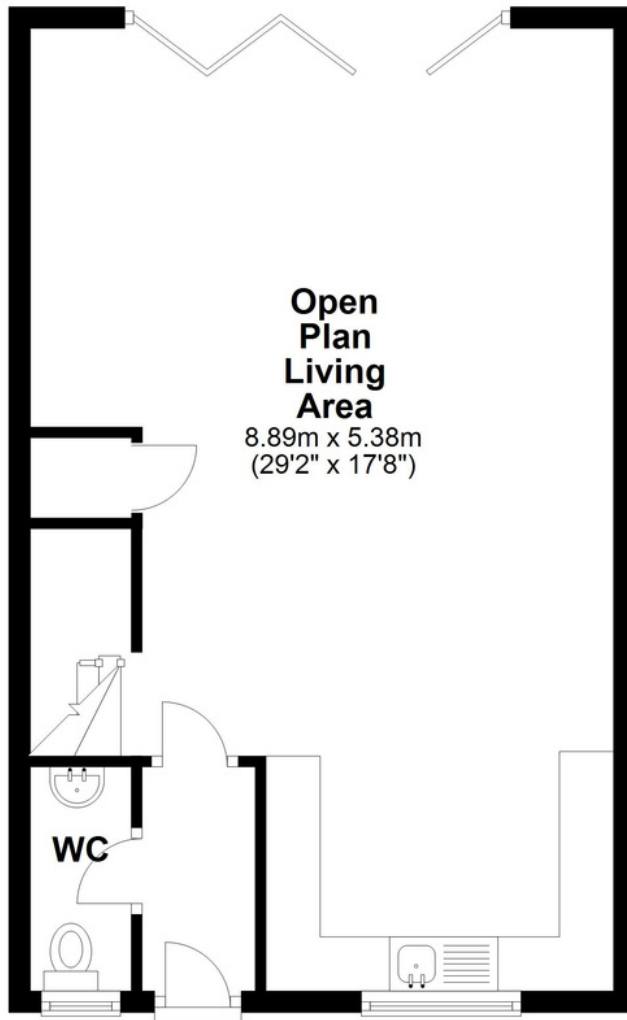
EPC - B
COUNCIL TAX BAND - D





Ground Floor

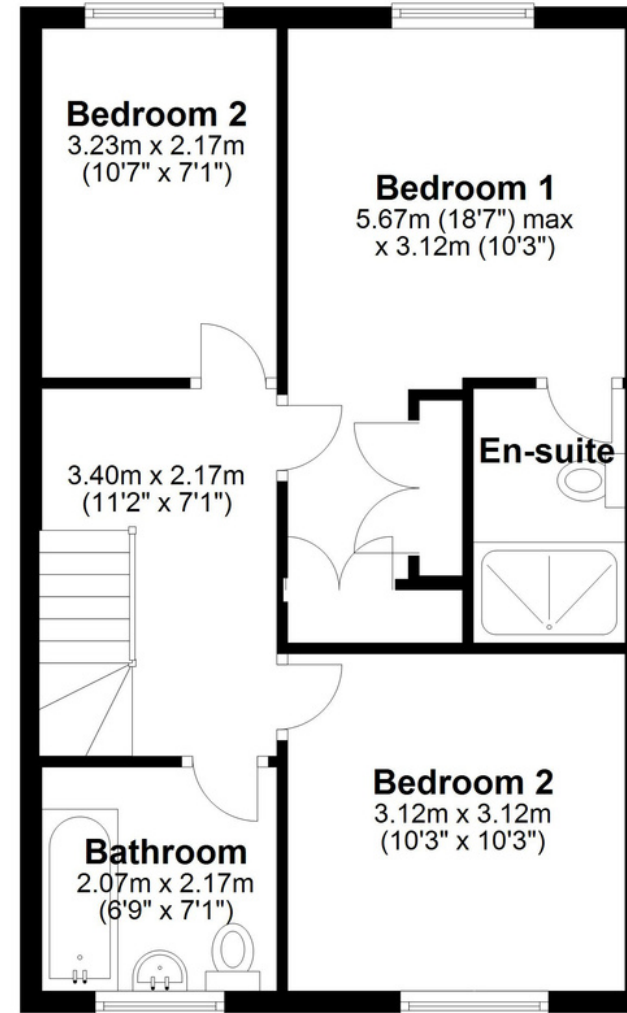
Approx. 47.9 sq. metres (515.2 sq. feet)



Floorplan

First Floor

Approx. 47.9 sq. metres (515.2 sq. feet)



Total area: approx. 95.7 sq. metres (1030.4 sq. feet)

01793 261 262

northswindon@richardjames.uk

Gemini House | Hargreaves Road | Swindon | SN25 5AZ

richard james

richardjames.uk